

TEXT URE & MATE RIAL

XSELECT
PREMIUM COLLECTION

sangetsu

for EXPORT

TEXTURE & MATERIAL

XSELECT PREMIUM COLLECTION

2025-2029

TEXTURE & MATERIAL

XSELECT PREMIUM COLLECTION
2025-2029

We blend tradition with innovation by incorporating a diverse range of materials from Japan and beyond, including time-honored and environmentally conscious options. This catalog presents a curated selection of meticulously crafted items, featuring rich textures that enhance interior spaces.

ELEMENTUM 3

FABRIC I 7

FABRIC II 15

PAPER WEAVE 23

SHELLY SOIL 31

CLAY PAPER 39

COLOR SELECTION 49

ECO-FRIENDLY PRODUCTS 59

WASHI / TRADITIONAL
JAPANESE PAPER 61

HAKU / FOIL 83

CORK 93

SHIFU / PAPER WEAVE 97

ORI / TEXTILE WALLPAPER 103

- Recycled
- Natural Materials
- Fur

ORI / TEXTILE WALLPAPER 127

- For Art Galleries and Museums

TSUCHI / DIATOMACEOUS EARTH,
SCATTER COATING 131

STONE, SUEDE 139

- miraslate™
- Ultrasuede®

ACCENT PANEL 145

PANEL ART 145

MOLD 146

SMART JOINER 147

COLORLED SEALANT, ADHESIVE 149

Important Guidelines on
Selection and Installation 150

ELEMENTUM



ELEMENTUM

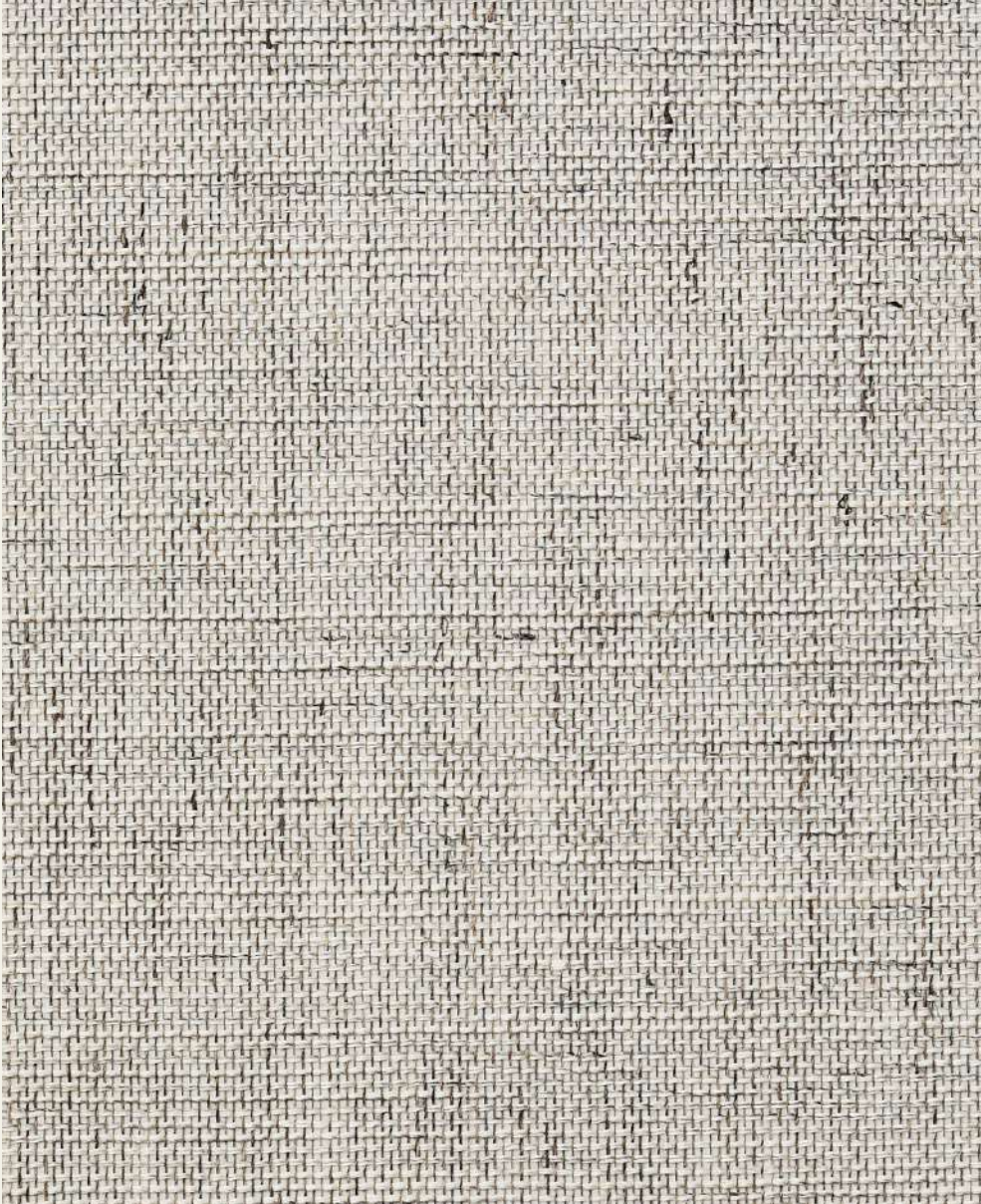
This wallpaper collection focuses on the texture of high-quality “real” natural materials and the colors that are essential elements to create a space. Feel the tranquil time flowing in a space made of materials with universal beauty.





SGM1004

SGM1001







SGM1002

SGM1001



SGM1002



SGM1003



SGM1004



SGM1005



SGM1006



SGM1007



SGM1008



SGM1009



SGM1010



SGM1001-SGM1010

NEW

Width 92cm

*For important guidelines on selection and installation, please refer to the pp.150-159.







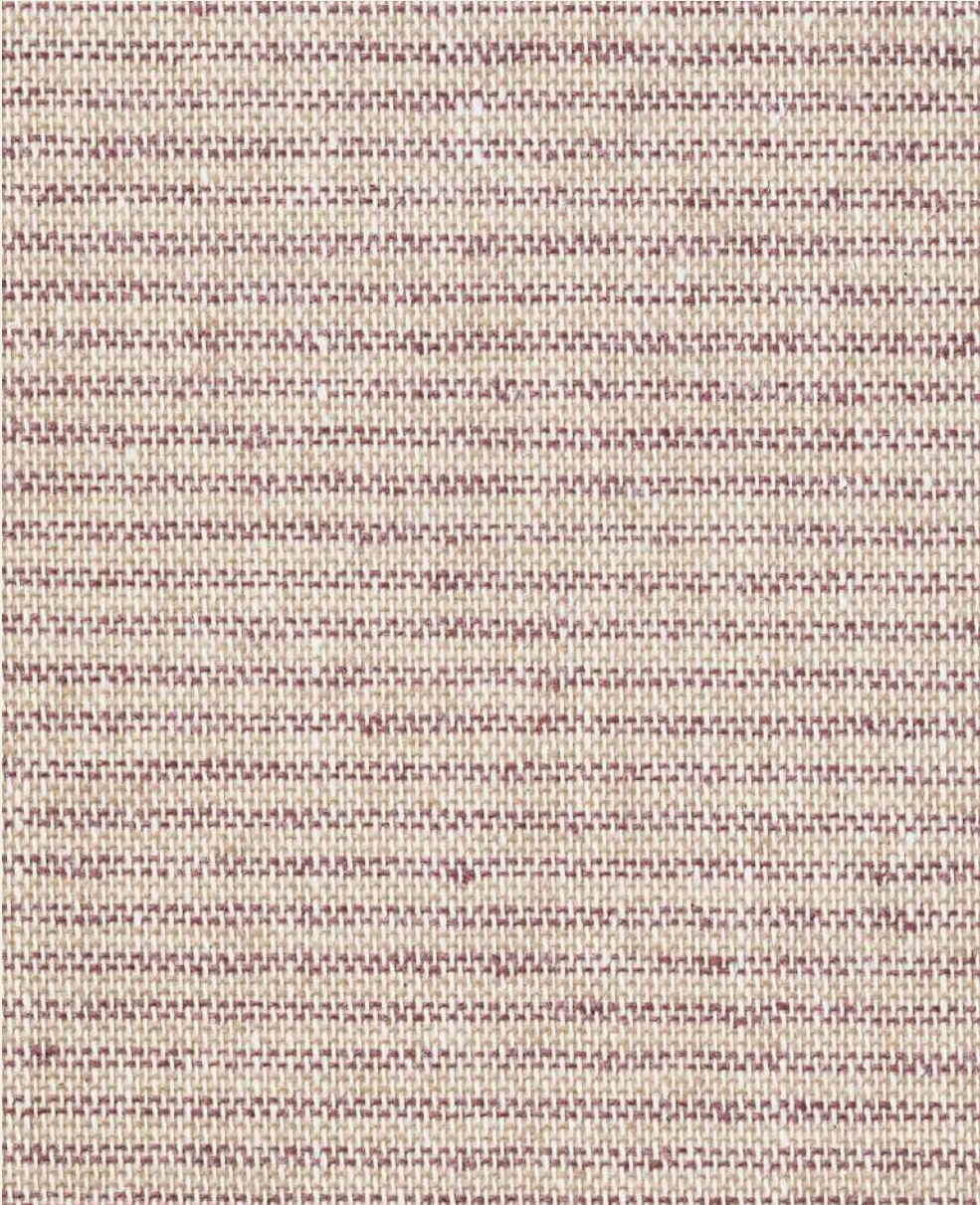


SGM1003



SGM1015

SGM1014







SGM1012

SGM1011



SGM1012



SGM1013



SGM1014



SGM1015



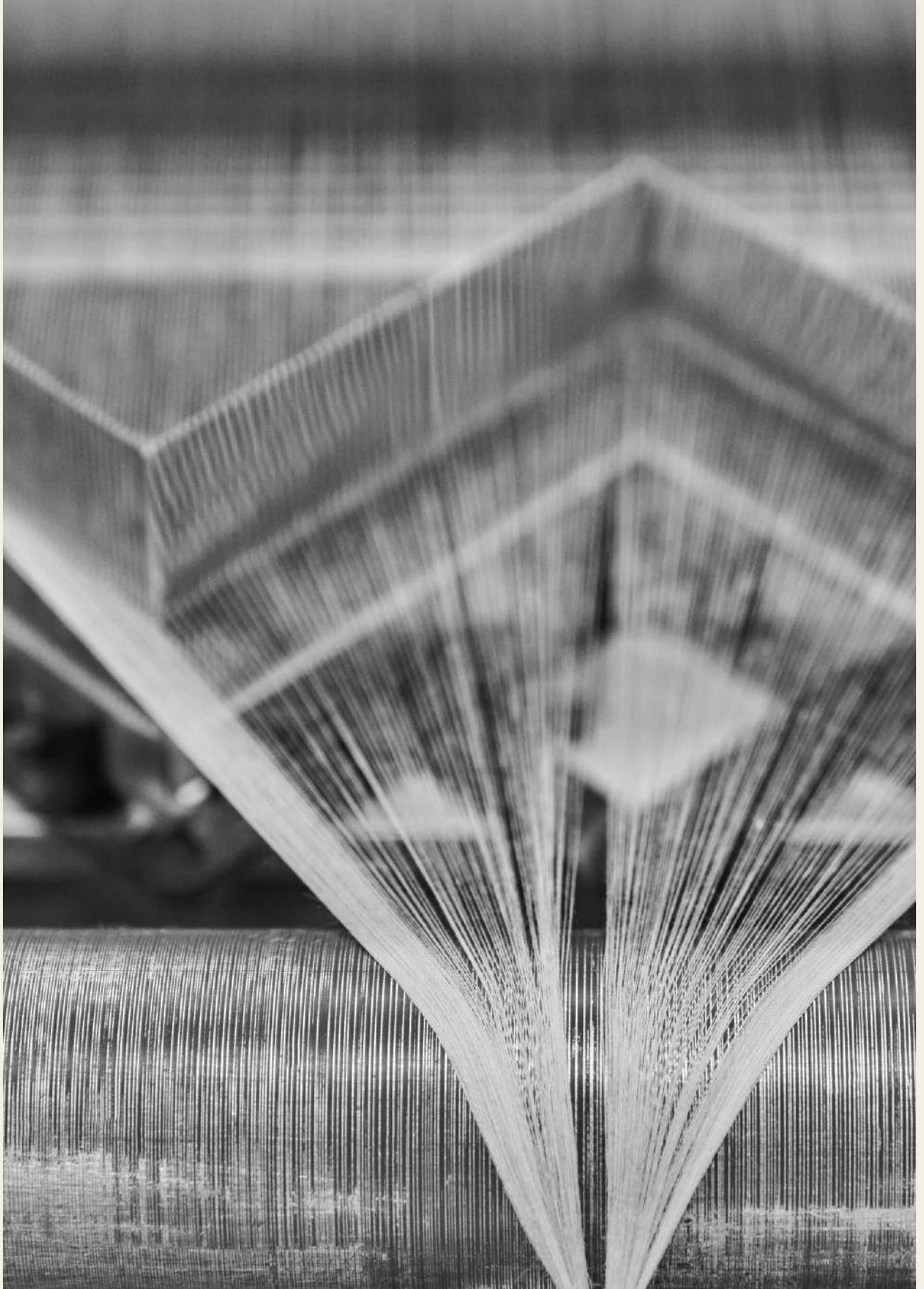
SGM1011-SGM1015

NEW

Width 92cm

*For important guidelines on selection and installation, please refer to the pp.150-159.





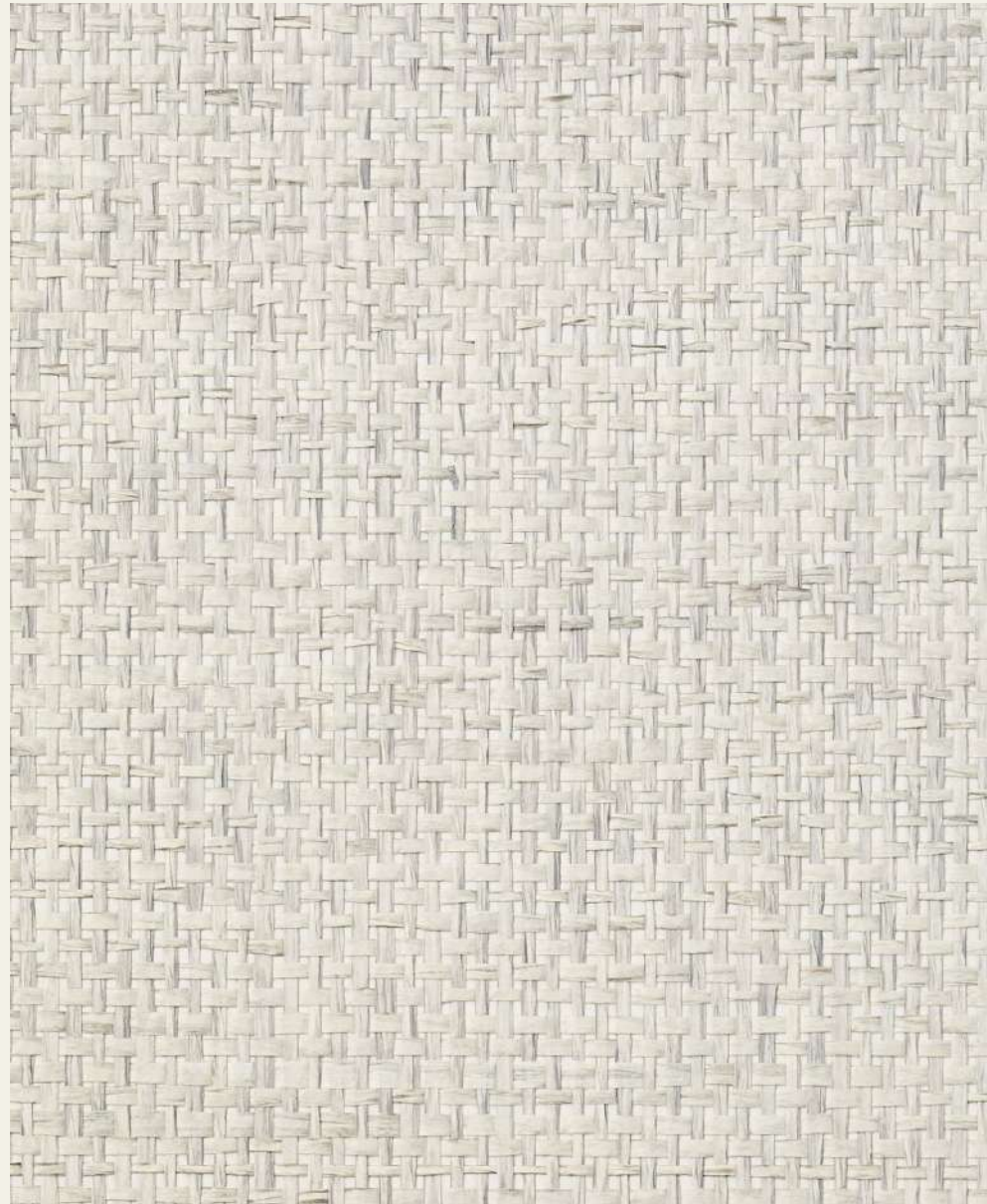




SGM1013



SGM1017







SGM1022

SGM1016



SGM1017



SGM1018



SGM1019



SGM1020



SGM1021



SGM1022



SGM1023



SGM1016-SGM1023

NEW

Width 92cm

*For important guidelines on selection and installation, please refer to the pp.150-159.









SGM1023



SGM1025

SGM1031







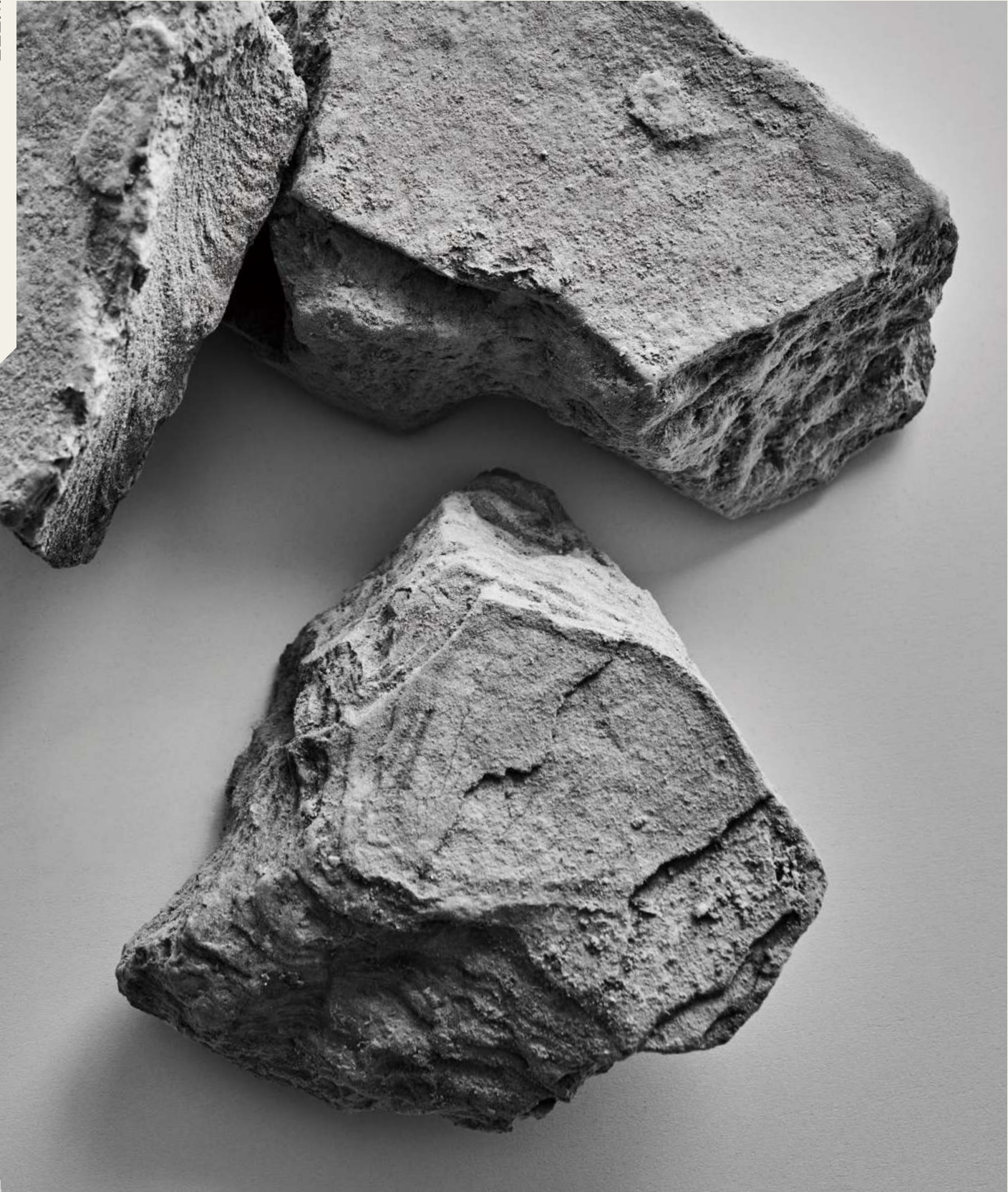
SGM1030

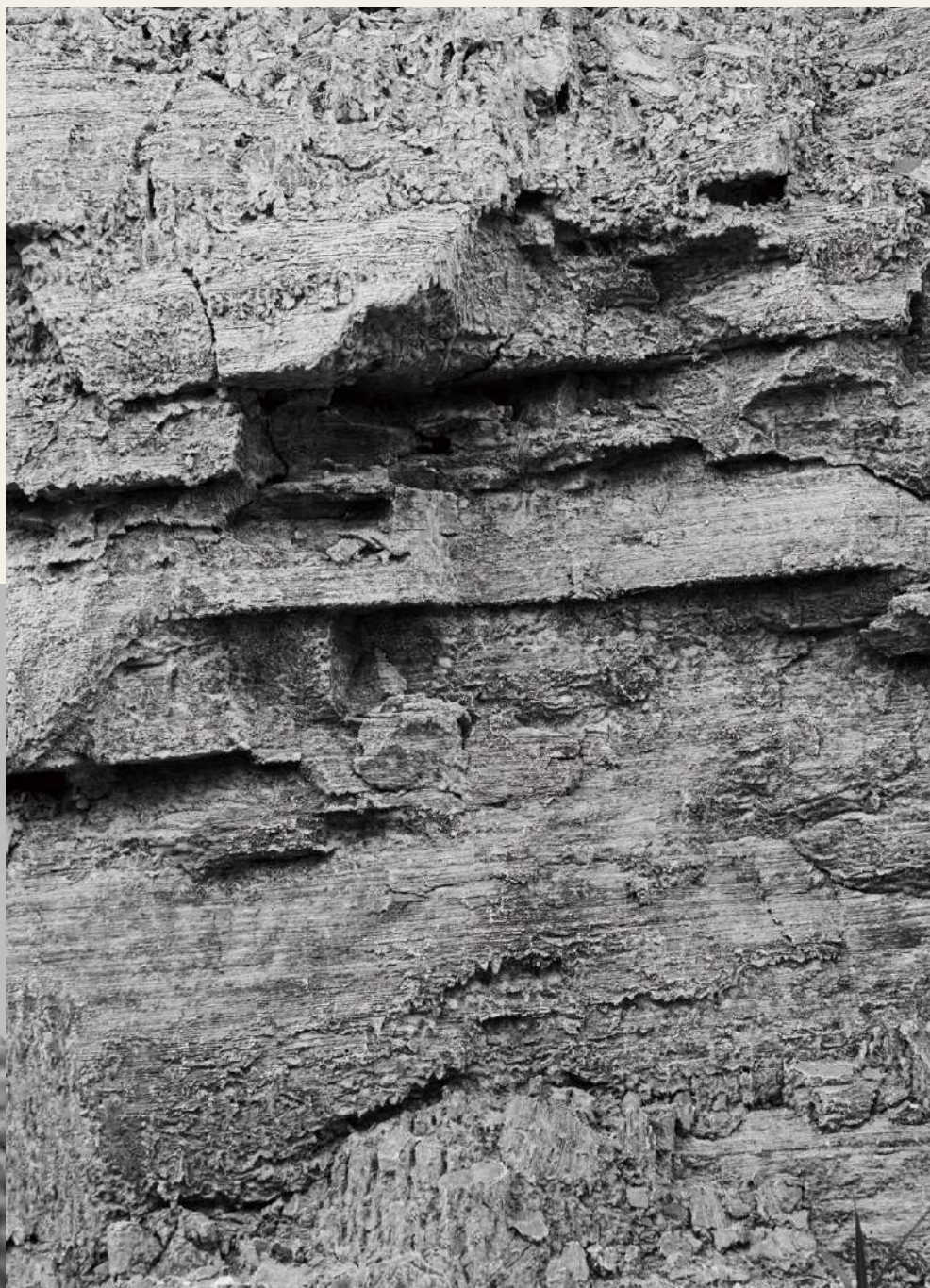


SGM1024-SGM1031 NEW

Width 92cm Antifungal, Humidity Control

*For important guidelines on selection and installation, please refer to the pp.150-159.







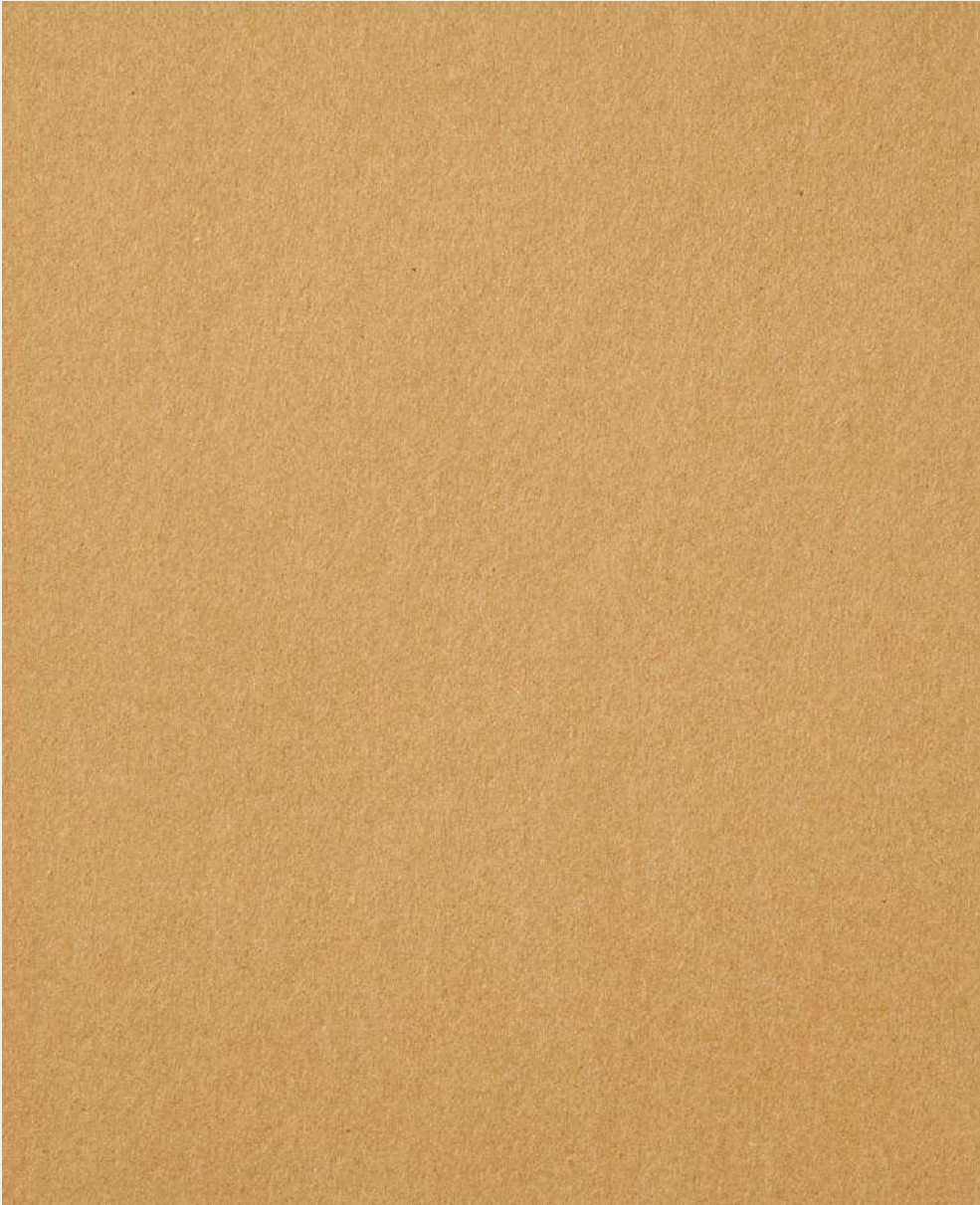


SGM1027



SGM1040

SGM1040







SGM1034

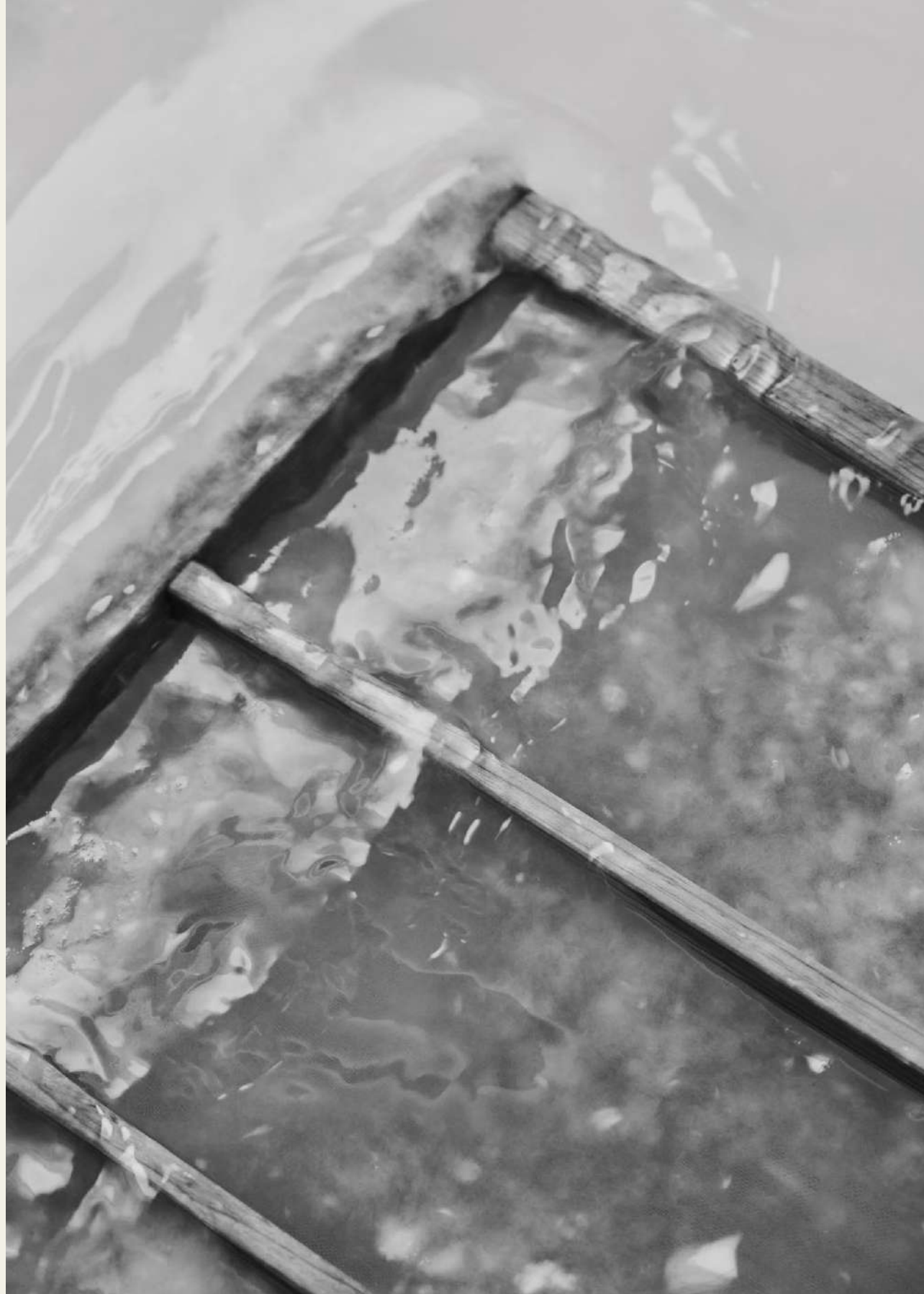


SGM1032-SGM1041

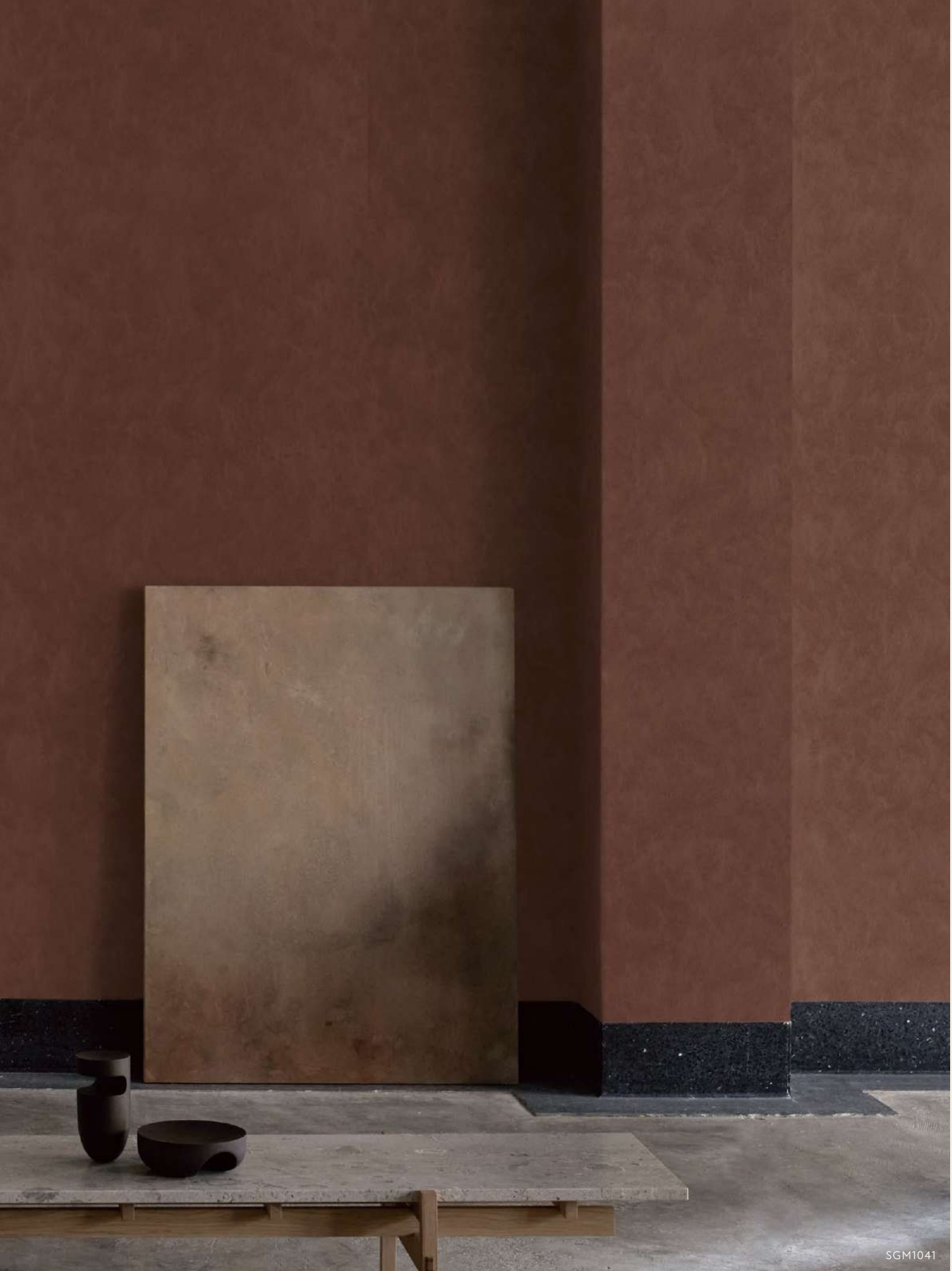
Width 92cm

*Grains on the surface may naturally come off over time. Seams may be more noticeable due to the textured finish.
*For important guidelines on selection and installation, please refer to the pp.150-159.









SGM1041



ELEMENTUM

COLOR SELECTION

**We have developed a color series that showcases the unique
characteristics of various materials.**

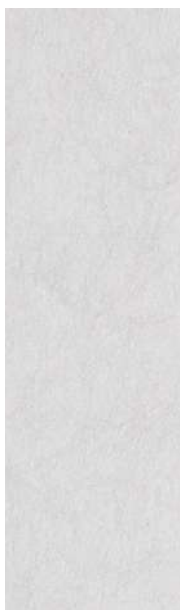
**Subtle variations from uneven density, understated tones
absorbed into the material, and delicate details
all come together to create a perfectly balanced range.**







SGM1051 NEW



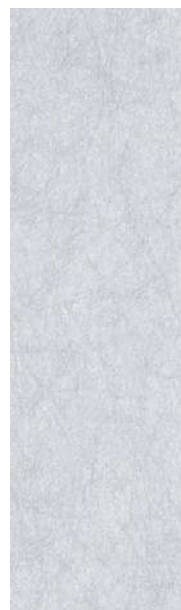
SGM1052 NEW



SGM1053 NEW



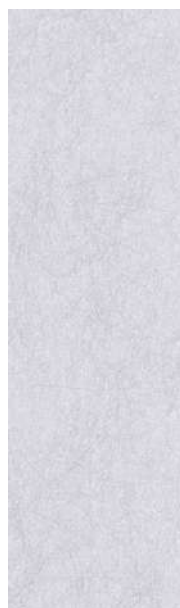
SGM1054 NEW



SGM1055 NEW



SGM1056 NEW



SGM1057 NEW



SGM1058 NEW



SGM1059 NEW



SGM1060 NEW



SGM1061 NEW



SGM1062 NEW

SGM1051 - SGM1062

Width 92cm Antifungal

*For important guidelines on selection and installation, please refer to the pp.150-159.



SGM1063



SGM1073

Floor Tile: WD-2025 Curtain: SC7208



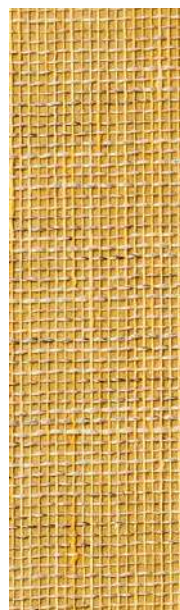
SGM1063



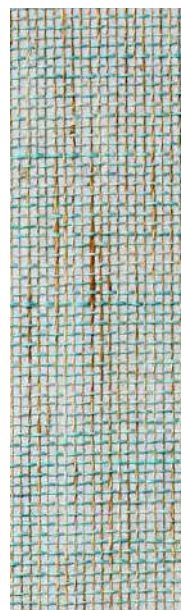
SGM1064 NEW



SGM1065



SGM1066



SGM1067 NEW



SGM1068



SGM1069 NEW



SGM1070 NEW



SGM1071 NEW



SGM1072 NEW



SGM1073 NEW



SGM1074 NEW

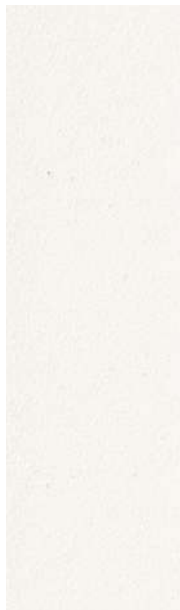
SGM1063 - SGM1068

Width 92cm

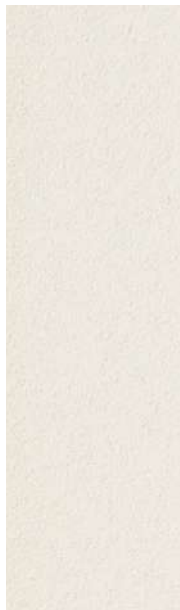
SGM1069 - SGM1074

Width 92cm

*For important guidelines on selection and installation, please refer to the pp.150-159.



SGM1075



SGM1076



SGM1077



SGM1078 NEW



SGM1079 NEW



SGM1080 NEW



SGM1081 NEW



SGM1082 NEW



SGM1083 NEW



SGM1084 NEW



SGM1085 NEW



SGM1086 NEW

SGM1075 - SGM1080

Width 92cm Antifungal, Humidity Control

SGM1081 - SGM1086

Width 92cm Antifungal
Shell Powder Wallpaper

*For important guidelines on selection and installation, please refer to the pp.150-159.







SGM1087 NEW



SGM1088



SGM1089



SGM1090



SGM1091 NEW



SGM1092 NEW



SGM1093



SGM1094



SGM1095



SGM1096



SGM1097

SGM1087 - SGM1092

Width 92cm Antifungal

SGM1093 - SGM1097

Width 92cm Water-repellent for textile

*SGM1087-1092 : Please be careful not to scratch or leave glue on dark color products.

*SGM1093-1097 : Color difference is likely to appear at the joints, we recommend installation with inset seams.

*For important guidelines on selection and installation, please refer to the pp.150-159.





SGM1098



SGM1099



SGM1100 NEW



SGM1101



SGM1102



SGM1103 NEW



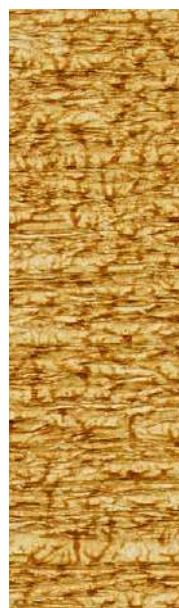
SGM1104 NEW



SGM1105



SGM1106



SGM1107



SGM1108 NEW



SGM1109

SGM1098 - SGM1103

Width 92cm

SGM1104 - SGM1109

Width 97cm

*SGM1104-1109 : Avoid pressing too hard with the roller or rubbing the surface.

*For important guidelines on selection and installation, please refer to the pp.150-159.

ECO-FRIENDLY PRODUCTS

This catalog features products created with a strong commitment to environmental sustainability from multiple perspectives. It highlights innovative approaches such as reducing energy and resource waste, utilizing recycled materials, and creatively repurposing discarded resources into design elements.

Recycled Yarn Woven Wallpaper

At Sangetsu, we're progressively transitioning our long-standing popular products to recycled yarns. In this catalog, you'll find items made with recycled polyester yarn derived from sources like plastic bottles, as well as wallpapers crafted from paper yarn created from waste materials generated during coffee filter production.

Note: There will be a period when the new and old specifications of the product will be mixed in our inventory.

P.104	SGM1271-1274	P.124	SGM1344-1347
P.106	SGM1275-1280	P.127	SGM1361-1368
P.121	SGM1326-1327		
	SGM1330-1331		



Reclaimed Fiber Woven Wallpaper

Reclaimed fiber processing is the method of breaking down fabric into a fibrous state and re-spinning it into yarn. At Sangetsu, we are repurposing unused inventory of our curtain fabrics as raw material for this process. Some of the woven wallpapers featured here are made using yarn produced from reclaimed fibers.

Note: The raw materials used and their proportions may vary depending on the production batch.

P.18	SGM1011-1015
P.108	SGM1281-1284

Organic Cotton Wallpaper

Organic cotton is grown according to strict standards set by certified organizations. Since no pesticides or chemical fertilizers are used in its cultivation, it is considered an environmentally friendly material.



P.110	SGM1285-1286
-------	--------------

Denim Washi Wallpaper

The trimmed edges of denim fabric—typically discarded during manufacturing—are pulverized and blended into traditional Japanese washi paper. This process repurposes what was once waste material, combining it with other elements to create a distinctive and visually engaging design.

P.64 SGM1119-1121



Shell Powder Wallpaper

A large volume of scallop shells is discarded during food processing. Typically treated as industrial waste, the shells are incinerated and ground into a fine powder, which is then used as aggregate in this wallpaper.

Note: Utility model registration is pending.

P.34 SGM1024-1031
P.53 SGM1081-1086
P.134 SGM1399-1402

Collage Washi Wallpaper

During the process of shaping washi into various forms, leftover scraps are inevitably created. These small pieces are then collaged together to form a new sheet of washi. By incorporating even the tiniest fragments into the design, this product embraces the spirit of upcycling, ensuring that no material goes to waste.

P.82 SGM1165



WASHI

TRADITIONAL JAPANESE PAPER

**Washi was introduced to Japan over 1,400 years ago and
has been an integral part of our history ever since.
The wisdom and craftsmanship of our ancestors,
combined with the purity of natural water,
are woven into each delicate sheet,
embodying the essence of Japanese tradition.**

Machine-Made Washi Paper pp.61-68
Handcrafted Washi Paper pp.69-82





Audo Copenhagen ▶ Audoc Copenhagen / The Seal Lounge Chair, Low Back / <https://audocph.jp>

Audo Copenhagen ▶ Audoc Copenhagen / The Seal Ottoman / <https://audocph.jp>

Audo Copenhagen ▶ Audoc Copenhagen / Hashira Floor Lamp / <https://audocph.jp>

SGM1115



SGM1113

WASHI | Machine-made Japanese Paper



SGM1111
Width 92cm



SGM1112
Width 92cm



SGM1113
Width 92cm



SGM1114
Width 92cm



SGM1115
Width 92cm



SGM1116
Width 92cm
Water Repellent



SGM1117
Width 92cm
Water Repellent



SGM1118
Width 92cm

*SGM1111, 1116, 1117 : Due to the characteristics of the product, the woven kôzo fiber and skin may stand out.
*For important guidelines on selection and installation, please refer to the pp.150-159.



This wallpaper is made by grinding the ends of denim fabric and putting them into Japanese paper.



SGM1119 NEW

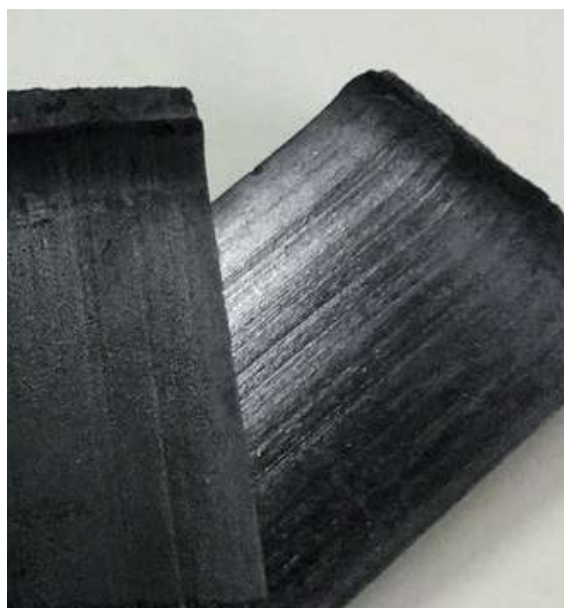


SGM1120 NEW



SGM1121 NEW

This wallpaper is created by crushing bamboo charcoal and blending it with ganpi fibers, which are known for their fine texture.



SGM1122



SGM1123



SGM1124 NEW

SGM1119 - SGM1121

Width 92cm

Denim Washi Wallpaper

SGM1122 - SGM1124

Width 92cm

*For important guidelines on selection and installation, please refer to the pp.150-159.





SGM1125



SGM1126

NEW



SGM1127



SGM1128



SGM1130



SGM1129



SGM1130

SGM1125 - SGM1128

Width 92cm

SGM1129 - SGM1130

Width 92cm

*SGM1129, 1130 : Due to the characteristics of the product, the joint is easy to stand out, so we recommend that you install with a joint trim.

*For important guidelines on selection and installation, please refer to the pp.150-159.





SGM1131



SGM1132



SGM1133



SGM1134

NEW



SGM1131 - SGM1134

Width 92cm Water Repellent

*For important guidelines on selection and installation, please refer to the pp.150-159.



WASHI | Hand Crafted Japanese Paper



SGM1135

NEW

SGM1135

Sold by sheet

Size :60cm ↔60cm

Edge : Untrimmed feathery edge



SGM1136

SGM1136 - SGM1137



SGM1137

Sold by sheet

Size :60cm ↔90cm

Edge : Untrimmed feathery edge

*The color and texture of each hand-processed handcraft washi paper are different. For important guidelines on selection and installation, please refer to the pp.150-159.



SGM1138 (Seam Treatment)

Floor Tile : WD-2050 Rug : STR-1361



SGM1139 (Edge trimming / Overlap joint)
Floor Tile: WD-2050



SGM1138

NEW



SGM1139

NEW

About SGM1138 and SGM1139

This design features strips of washi paper layered over a base. To prevent lifting, the wallpaper is fully glued approximately 3cm from both edges—please use these sections for joining. In the installation example for SGM1139, both edges are trimmed by about 2cm before overlapping for application.



SGM1138 - SGM1139

Sold by roll

Width 94cm × 3m roll
Edge: Trimming

*The color and texture of each hand-processed handcraft washi paper are different. For important guidelines on selection and installation, please refer to the pp.150-159.





SGM1140

NEW



SGM1141

NEW

SGM1140 - SGM1141

Sold by roll

Width 95cm × 3m roll

Edge : Untrimmed feathery edge for both side of edges

Water Repellent



SGM1142



SGM1143

SGM1142 - SGM1143

Sold by roll

Width 92cm × 3m roll

Edge : Trimming

Water Repellent



SGM1144

NEW

Sold by roll

Width 95cm × 3m roll

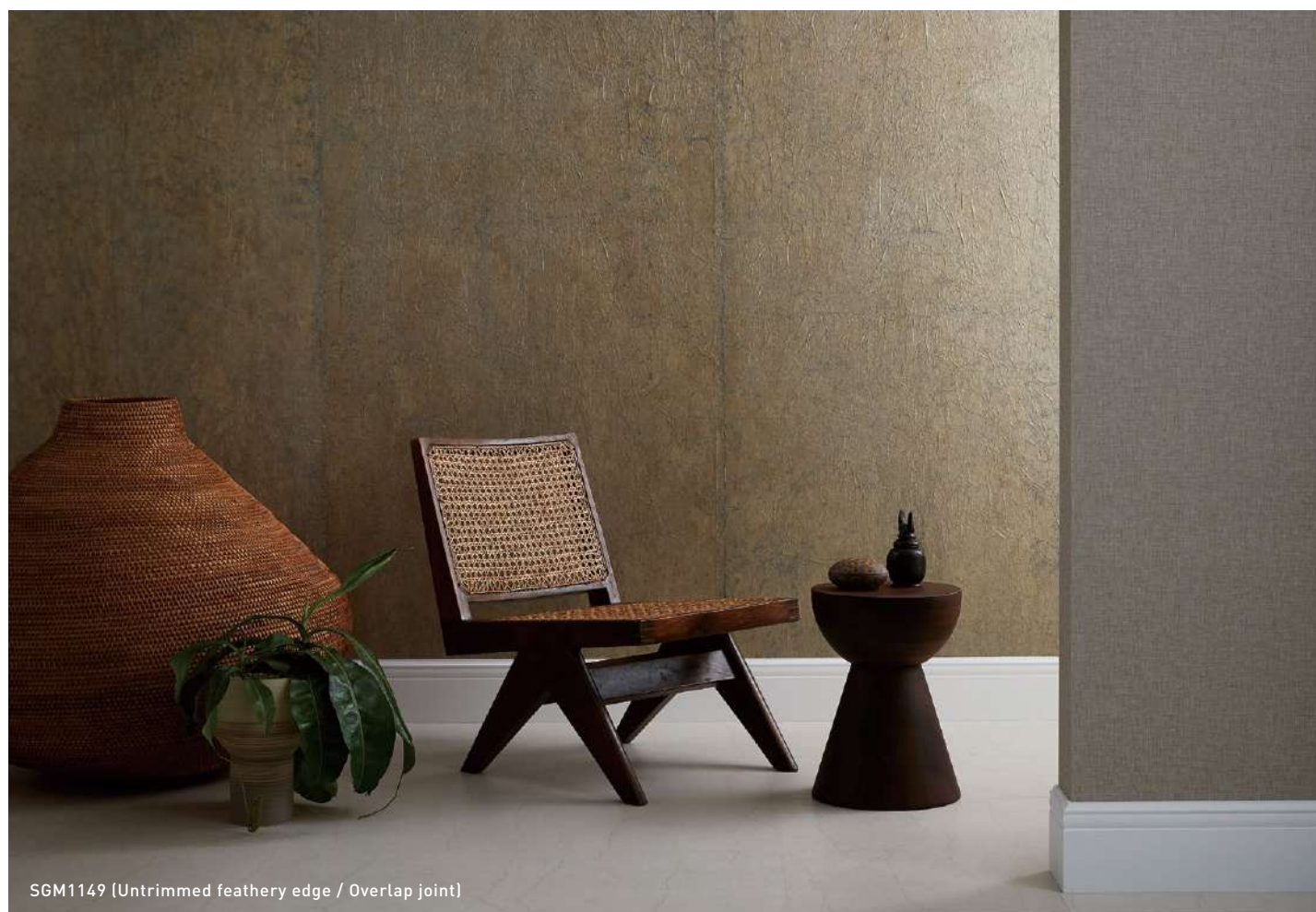
Edge : Untrimmed feathery
edge for both side of
edges

Water Repellent



SGM1143

*The color and texture of each hand-processed handcraft washi paper are different. For important guidelines on selection and installation, please refer to the pp.150-159.





SGM1145

NEW



SGM1146

NEW



SGM1147

NEW

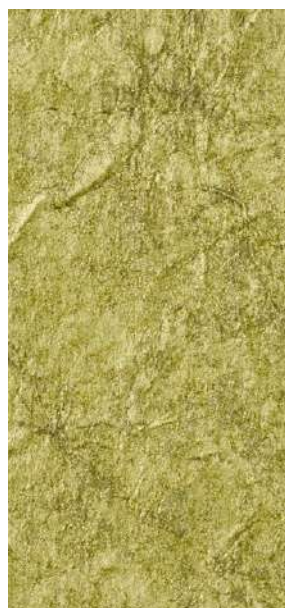


SGM1148

NEW



SGM1149



SGM1150

NEW



SGM1151



SGM1152

SGM1145 - SGM1148

Sold by roll

Width 95cm×3m roll

Edge : Untrimmed feathery edge for both
side of edges

Water Repellent

SGM1149 - SGM1152

Sold by roll

Width 95cm×3m roll

Edge : Untrimmed feathery edge for both
side of edges

Water Repellent

*The color and texture of each hand-processed handcraft washi paper are different. For important guidelines on selection and installation, please refer to the pp.150-159.





SGM1153

Sold by sheet

Size : 63cm ↔ 93cm

Edge : Untrimmed feathery edge

※ 木管アルテック社



SGM1154

NEW

Sold by sheet

Size : 63cm ↔ 93cm

Edge : Untrimmed feathery edge

※ 木管アルテック社



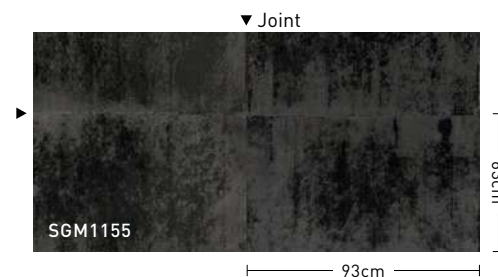
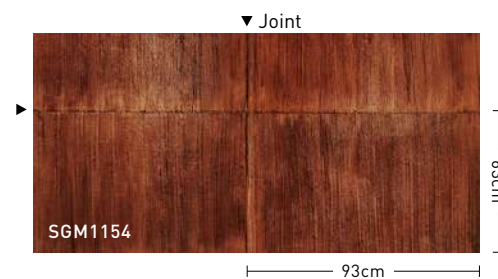
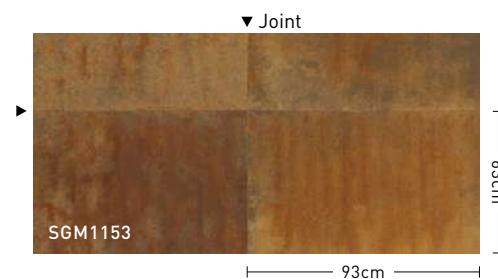
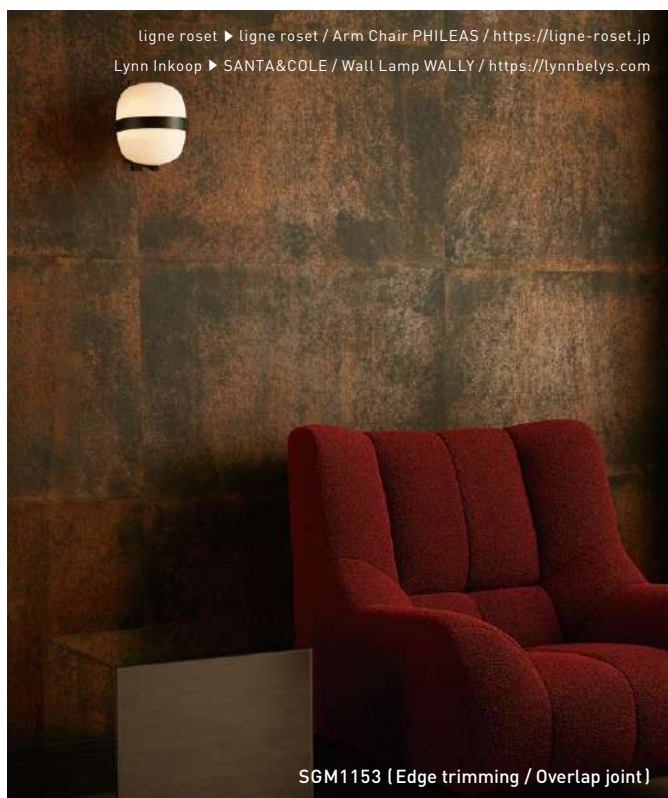
SGM1155

Sold by sheet

Size : 63cm ↔ 93cm

Edge : Untrimmed feathery edge

※ 木管アルテック社



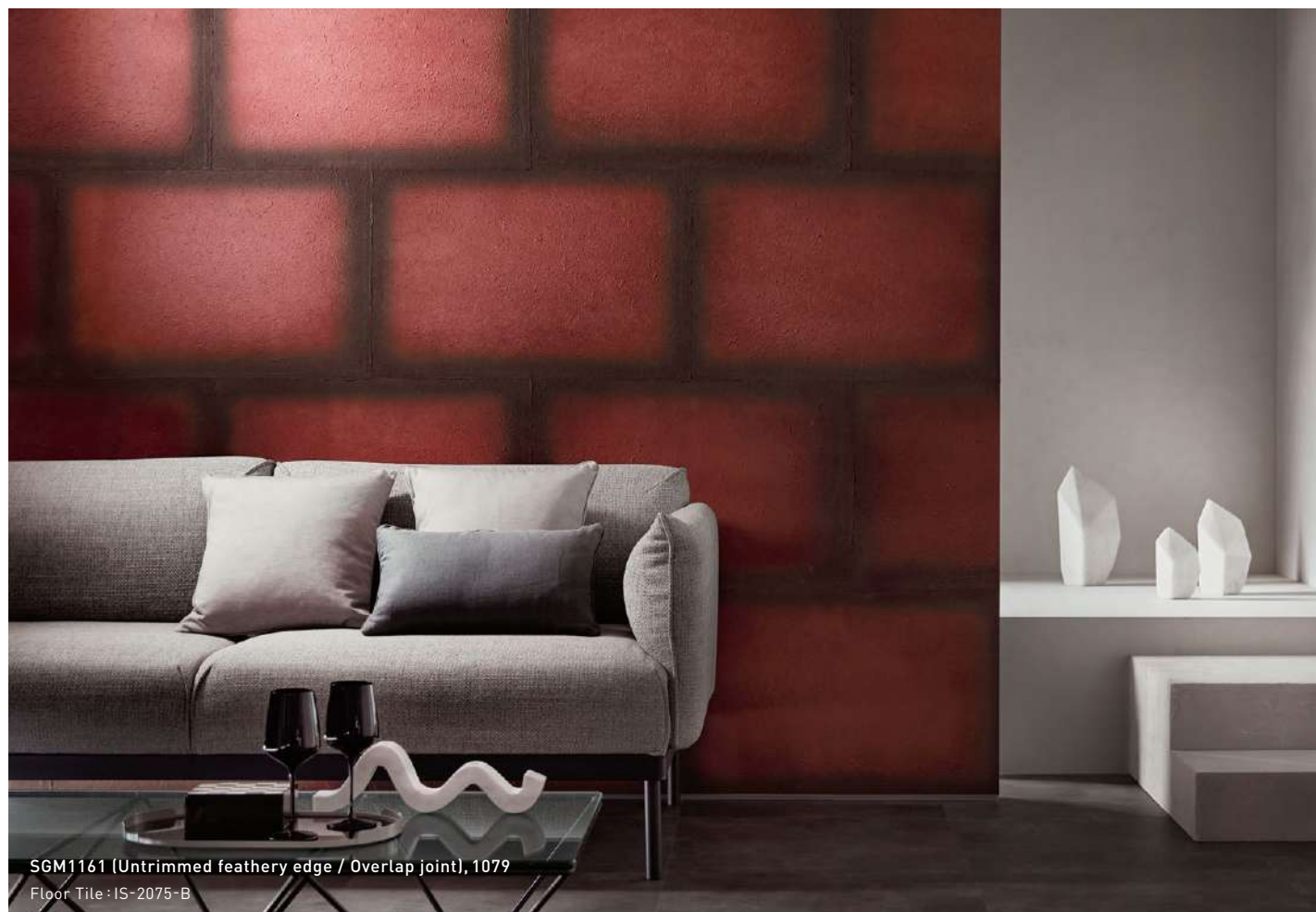
*Due to the use of lacquer, color changes may occur over time.

*The color and texture of each hand-processed handcraft washi paper are different. For important guidelines on selection and installation, please refer to the pp.150-159.

Louis Poulsen Japan ▶ Louis Poulsen / VL38 Watt / www.louispoulsen.com



SGM1159 (Untrimmed feathery edge / Overlap joint)



SGM1161 (Untrimmed feathery edge / Overlap joint), 1079
Floor Tile: IS-2075-B



SGM1156



SGM1157



SGM1158



SGM1159



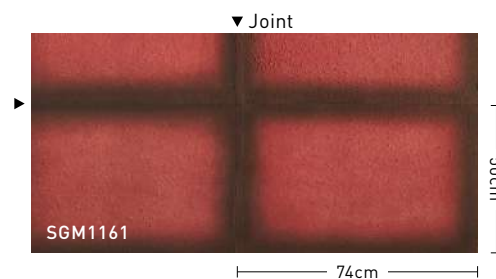
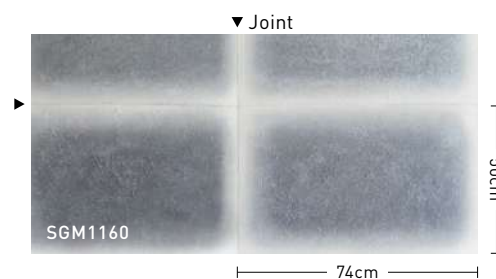
SGM1160

NEW



SGM1161

NEW



SGM1156 - SGM1159

Sold by sheet

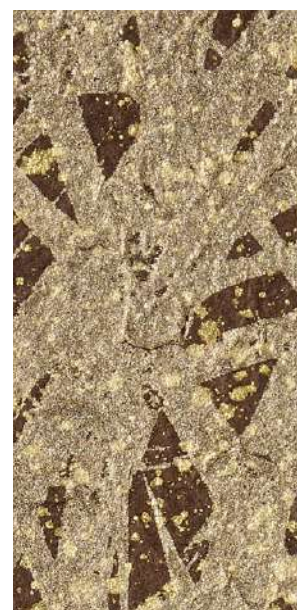
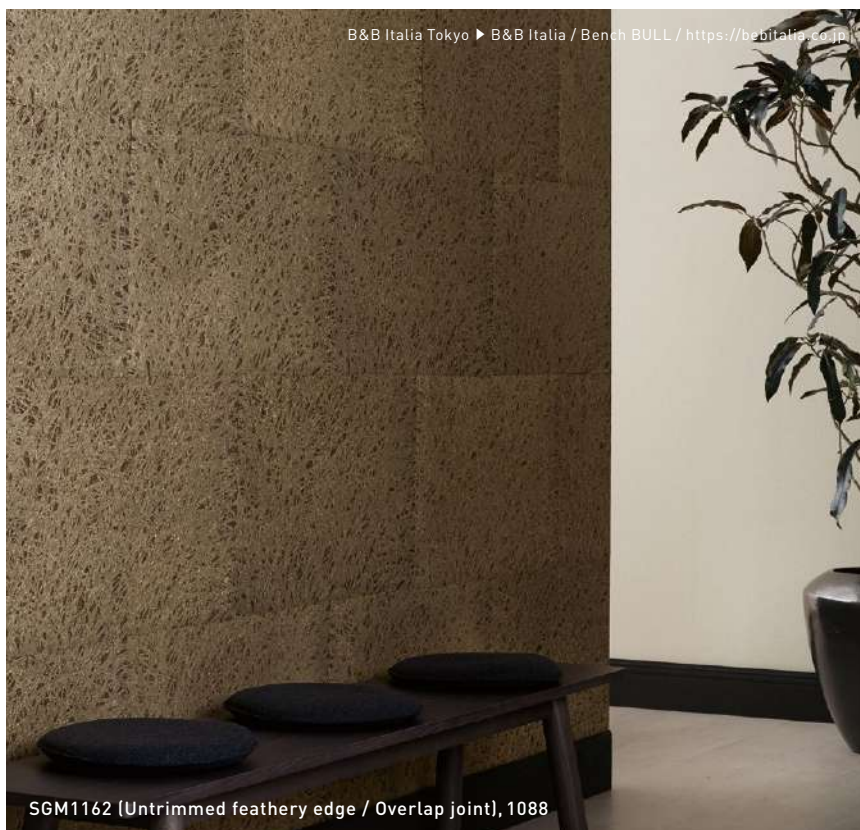
Size : 64cm ↔ 94cm
Edge : Untrimmed feathery edge

SGM1160 - SGM1161

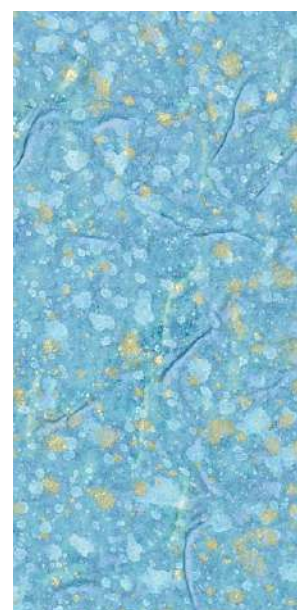
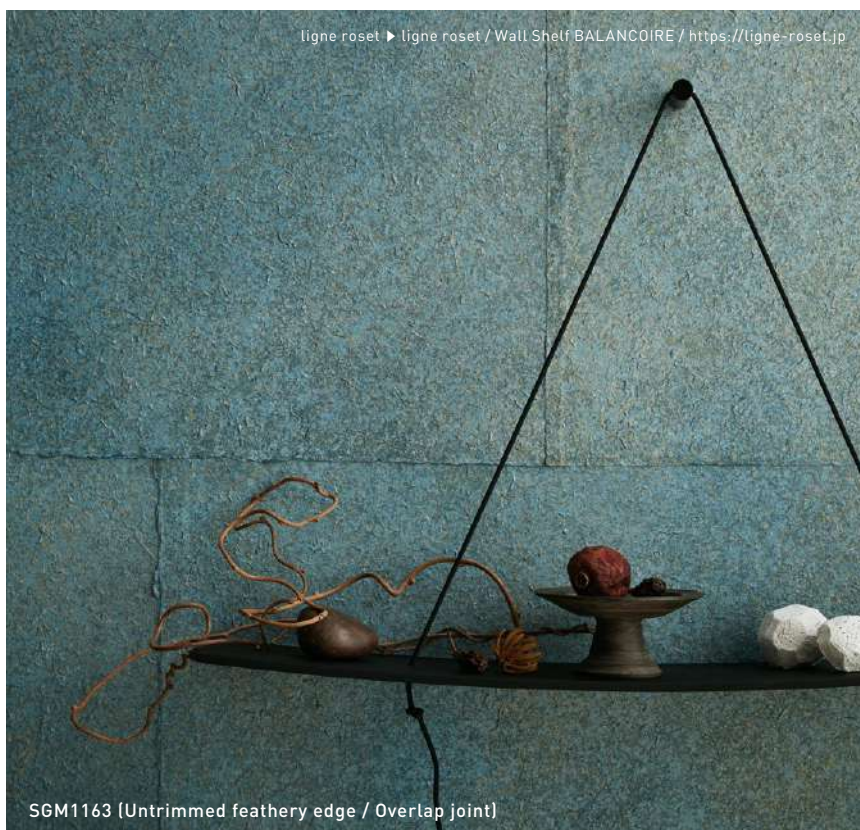
Sold by sheet

Size : 50cm ↔ 74cm
Edge : Untrimmed feathery edge

*The color and texture of each hand-processed handcraft washi paper are different. For important guidelines on selection and installation, please refer to the pp.150-159.



SGM1162



SGM1163

SGM1162

Sold by sheet

Size :50cm ↔74cm

Edge : Untrimmed feathery edge

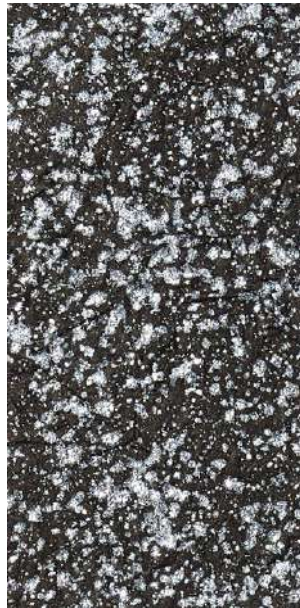
SGM1163

Sold by sheet

Size :64cm ↔94cm

Edge : Untrimmed feathery edge

*The color and texture of each hand-processed handcraft washi paper are different. For important guidelines on selection and installation, please refer to the pp.150-159.



SGM1164

NEW

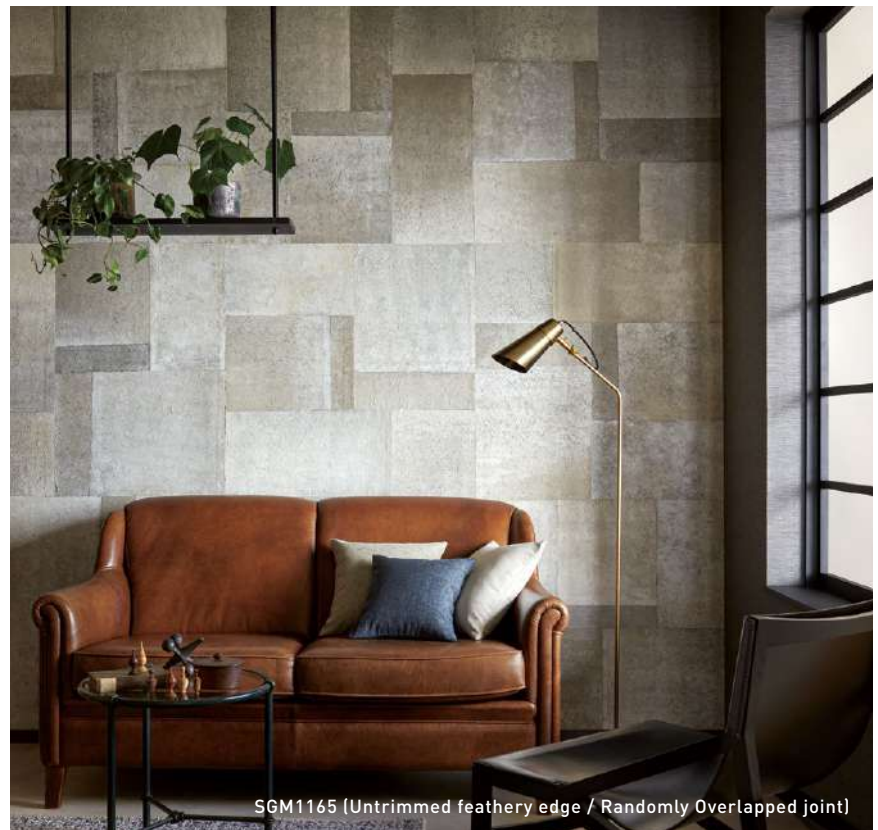


SGM1164 (Untrimmed feathery edge / Randomly Overlapped joint)



SGM1165

NEW



SGM1165 (Untrimmed feathery edge / Randomly Overlapped joint)

SGM1164

Sold by sheet

Size : 62cm ↔ 62cm

Edge : Untrimmed feathery edge

SGM1165

Sold by sheet

Size : 89cm ↔ 89cm

Edge : Untrimmed feathery edge

About SGM1165

SGM1165 is a product made by pasting several types of Japanese paper together. The texture varies, but the collage pattern is the same.

Please refer to p.60 for more details.



89cm

*The color and texture of each hand-processed handcraft washi paper are different.
For important guidelines on selection and installation, please refer to the pp.150-159.

HAKU

FOIL

**The foil is so thin and delicate that it almost rides on the wind,
and the craftsman's technique makes it shine even more.**

**Like a soft sparkling water surface,
the wallpaper carefully accepts even the slightest light,
and fills the interior with natural beauty.**





HAKU | Hand Crafted Product



SGM1181



SGM1182



SGM1183



SGM1184



SGM1185

FOIL



SGM1183

SGM1181 - SGM1182

Sold by roll

Width 92cm × 7.4m roll
Foil size Approx. 15.7cm
SGM1181 : Tin Foil Flat Pressed
SGM1182 : Dutch Metal Foil Flat Pressed

SGM1183 - SGM1185

Sold by roll

Width 93cm × 7.4m roll
SGM1183, 1184 : Aluminum Foil Small Flake Pattern
SGM1185 : Dutch Metal Foil Small Flake Pattern

*Each piece has a different appearance since it is hand crafted paper. For important guidelines on selection and installation, please refer to the pp.150-159.



SGM1189

TC-5673 Ceiling: SGM1075 Floorcovering: SUR-1331



SGM1186



SGM1187



SGM1188

NEW



SGM1189

NEW

SGM1186 - SGM1187

Sold by roll

Width 92cm × 7.4m roll

SGM1186 : Aluminum Foil Decorative Foil Scatter

SGM1187 : Dutch Metal Foil Decorative Foil Scatter

SGM1188 - SGM1189

Sold by roll

Width 92cm × 7.4m roll

*Each piece has a different appearance since it is hand crafted paper. For important guidelines on selection and installation, please refer to the pp.150-159.



SGM1190 NEW



SGM1191 NEW



SGM1190



SGM1192 NEW



SGM1192

SGM1190 - SGM1191

Sold by roll

Width 92cm x 7.4m roll

SGM1192

Sold by roll

Width 92cm x 7.4m roll
Foil size Approx. 9.2cm

*Each piece has a different appearance since it is hand crafted paper. For important guidelines on selection and installation, please refer to the pp.150-159.

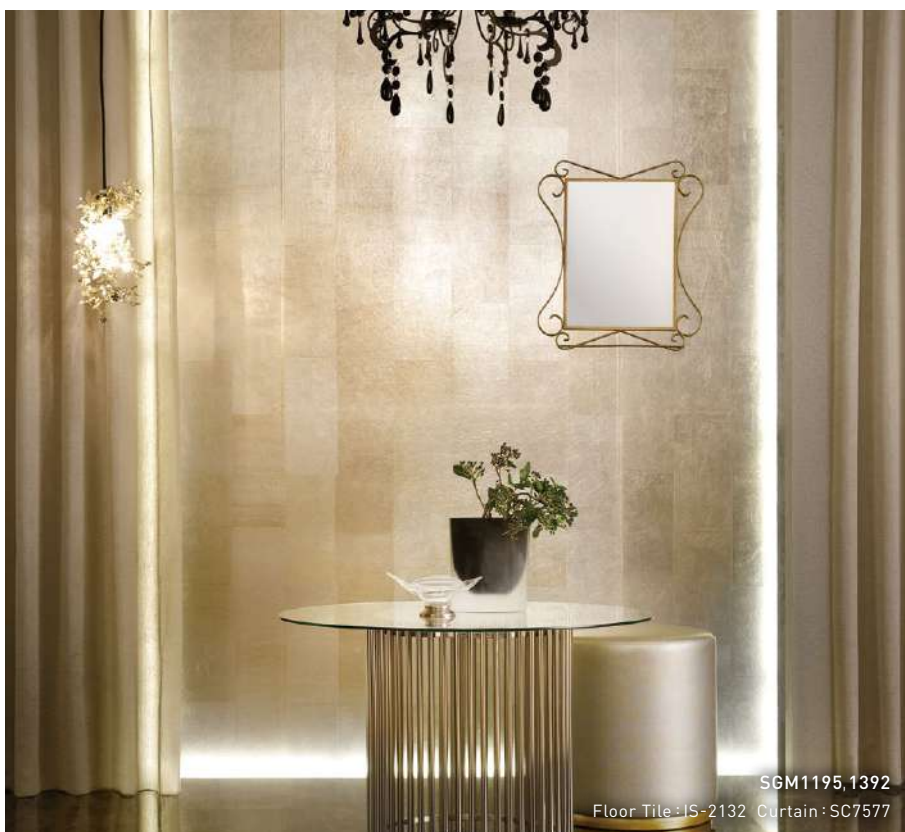


SGM1193 NEW



SGM1194 NEW

FOIL



SGM1195 NEW

SGM1193 - SGM1194

Sold by roll

Width 92cm × 7.4m roll

SGM1193 : Silver Crumpled Paper

SGM1194 : Gold Crumpled Paper

SGM1195

Sold by roll

Width 92cm × 7.5m roll

Foil size †Approx. 31.5cm ↔ Approx. 15.3cm

*SGM1195 : Wallcovering using PVC as a base material.

*Each piece has a different appearance since it is hand crafted paper. For important guidelines on selection and installation, please refer to the pp.150-159.



HAKU | Machine Printed Product



SGM1196 - SGM1200

Width 92cm ±64.1cm ↔92cm
Foil Size Approx. 16cm

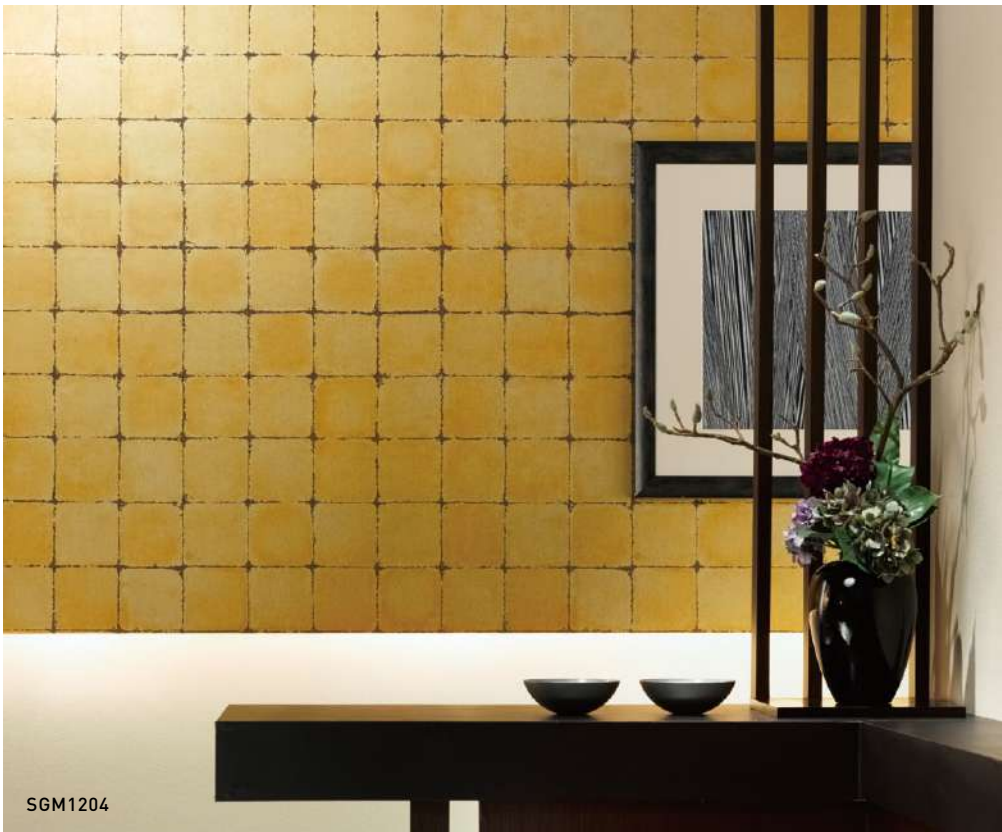
SGM1201 - SGM1203

Width 91cm ±64cm ↔91cm
Random Match

*For important guidelines on selection and installation, please refer to the pp.150-159.



SGM1204



SGM1204



SGM1205



SGM1205

SGM1204

Width 91cm ‡91cm ↔91cm
Foil Size Approx. 13cm

SGM1205

Width 91cm ‡91cm ↔91cm
Foil Size Approx. 13cm

*For important guidelines on selection and installation, please refer to the pp.150-159.



SGM1206 NEW



SGM1207 NEW



SGM1208

SGM1206 - SGM1207

Width 92cm ±64.1cm ↔92cm

SGM1208

Width 91.5cm ±62.5cm ↔91.5cm
Water Repellent

*For important guidelines on selection and installation, please refer to the pp.150-159.

CORK

**Cork, harvested by carefully peeling the bark of the cork oak tree,
is an eco-friendly material that naturally regenerates
every nine years without the need for tree felling.
Its rich texture enhances natural aesthetics, creating a striking
accent that adds depth and visual appeal to any space.**





SGM1222

93



SGM1221



SGM1221 NEW



SGM1222 NEW



SGM1223 NEW



SGM1224 NEW



SGM1225 NEW



SGM1226 NEW

SGM1221 - SGM1226

Width 90cm

*For important guidelines on selection and installation, please refer to the pp.150-159.



CORK



SGM1228



SGM1227



SGM1228



SGM1229



SGM1230

SGM1227 - SGM1230

Width 90cm

*For important guidelines on selection and installation, please refer to the pp.150-159.

SHIFU

PAPER WEAVE

Threads made from paper offer a uniquely soft texture.

**By weaving delicate paper yarns together,
we have created a rich, expressive surface.**

**Over time, this wallpaper gains depth and character,
adding warmth and charm to any space.**





SGM1243



97

SGM1246



SGM1241 NEW



SGM1242 NEW



SGM1243 NEW



SGM1244 NEW



SGM1245 NEW



SGM1246 NEW



SGM1247



SGM1248



SGM1249



SGM1250 NEW



SGM1251

SGM1241

Width 92cm

SGM1242 - SGM1246

Width 92cm

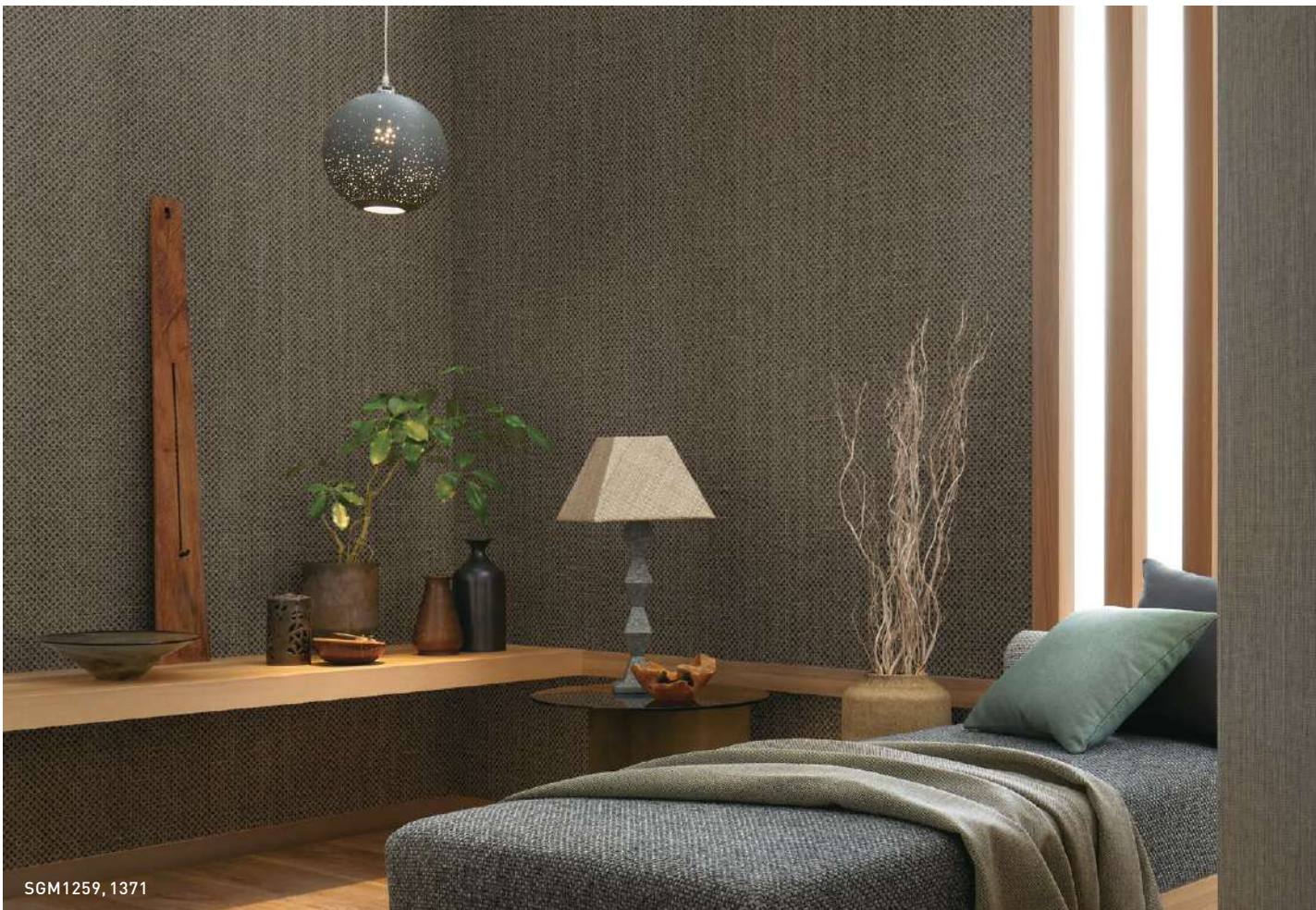
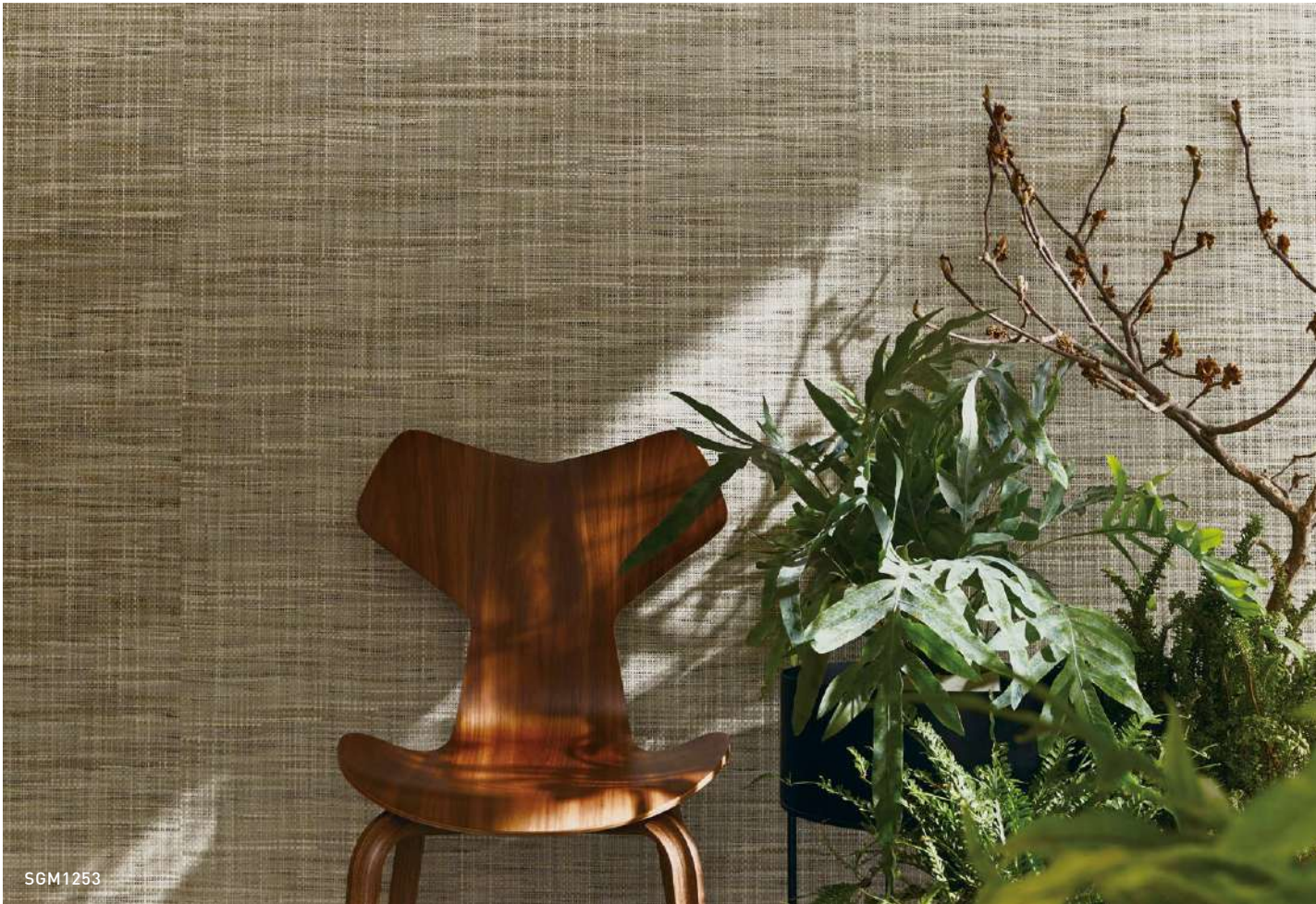
SGM1247 - SGM1249

Width 92cm

SGM1250 - SGM1251

Width 92cm

*For important guidelines on selection and installation, please refer to the pp.150-159.





SGM1252



SGM1253

NEW



SGM1254

NEW



SGM1255

NEW



SGM1256

NEW



SGM1257

NEW



SGM1258

NEW



SGM1259

NEW

SGM1252

Width 92cm

SGM1253 - SGM1255

Width 91cm

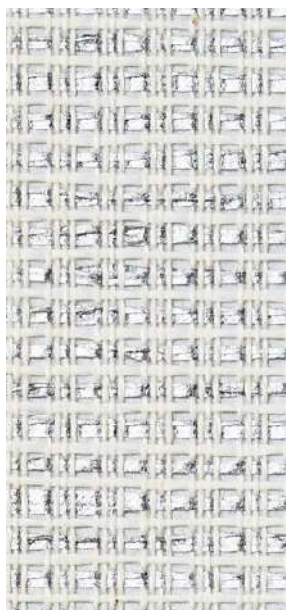
SGM1256 - SGM1258

Width 92cm

SGM1259

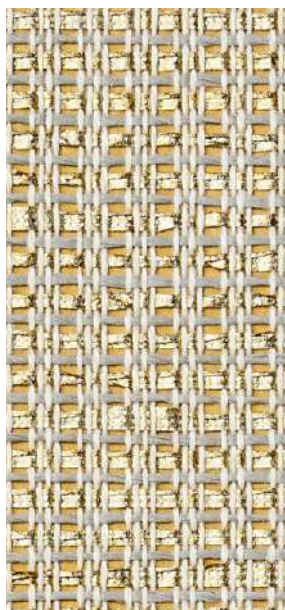
Width 92.5cm
±1.7cm ↔ 1.6cm

*For important guidelines on selection and installation, please refer to the pp.150-159.



SGM1260

NEW



SGM1261

NEW



SGM1260



SGM1262

NEW



SGM1263

NEW



SGM1263
RW-5364

SGM1260 - SGM1261

Width 92cm

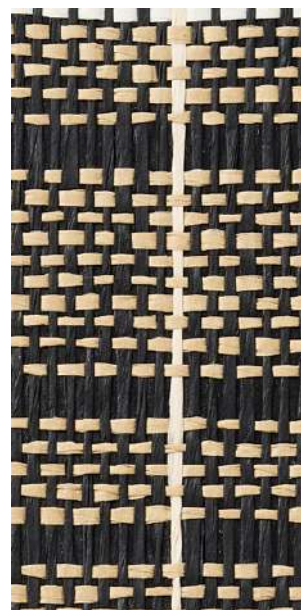
SGM1262 - SGM1263

Width 92.5cm ↔ 2.9cm

*For important guidelines on selection and installation, please refer to the pp.150-159.



SGM1264



SGM1265

NEW



SGM1266

SGM1264 - SGM1266

Width 91cm ±14.6cm ↔ 13cm

*SGM1264 and SGM1266 feature metallic thread as an accent, whereas SGM1265 does not.
*For important guidelines on selection and installation, please refer to the pp.150-159.

ORI

TEXTILE WALLPAPER

**These delicate, supple twisted threads are a masterpiece,
shaped by Japan's unique climate and meticulous craftsmanship.
Accompanied by the rhythmic hum of the machines,
each warp and weft thread is woven with
the dedication and passion of skilled artisans.**

Recycled pp.103-108
Natural Materials pp.109-110
Fur pp.115-118





This woven wallpaper is made with CAFETEX®,
a yarn crafted entirely from recycled paper, making it an eco-friendly choice.



SGM1271 **NEW**
Width 92cm



SGM1272 **NEW**
Width 92cm



SGM1273 **NEW**
Width 92cm



SGM1274 **NEW**
Width 92cm



CAFETEX® is a paper yarn created by repurposing offcuts from coffee filter production. These coffee filters are made from high-quality, dye-free, and unprinted pure pulp. Using a specialized technique, the pulp is regenerated into 100% recycled paper yarn. With its unique texture, woven depth, and interplay of different threads, CAFETEX® adds natural beauty and warmth when used as wallpaper.



*For important guidelines on selection and installation, please refer to the pp.150-159.



A textile wallpaper with a soft texture made from recycled yarn, which uses materials like post-production cotton waste as its raw material.



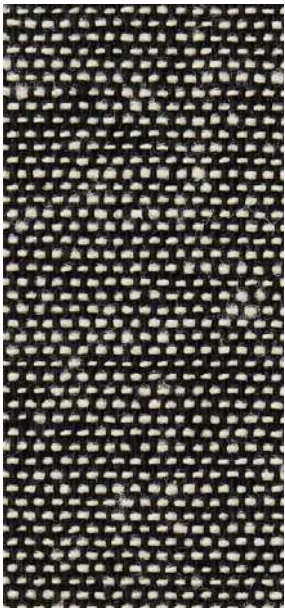
SGM1275 NEW



SGM1276 NEW



SGM1280 (Seam Treatment)
Floor Tile : WD-2071



SGM1277 NEW



SGM1278 NEW



SGM1279 NEW



SGM1280 NEW

SGM1275 - SGM1280

Width 92cm
Water-repellent for textile

*For important guidelines on selection and installation, please refer to the pp.150-159.

What is Water-repellent for textile?

■ Water repellent finish that prevents from dirt and stains

A fluorine-based water-repellent coating creates a protective resin layer on the surface. This reduces fuzziness while maintaining the natural texture of the woven wallpaper, enhancing its resistance to stains.

■ Easy to Handle During Installation

The water-repellent coating reduces moisture absorption, minimizing curling and shrinkage during installation. Additionally, the edges resist fraying, making this wallpaper easier to work with than conventional woven wallpapers.



Leftover in-house curtain fabric is recycled into new yarn using fiber recycling technology. The recycled yarn is then woven into a textile, which is used as wallpaper.

What is Reclaimed Fiber?

Reclaimed fiber is produced by collecting unused fabric, discarded textiles, and fabric scraps, then breaking them down into a fibrous state to create raw material for new yarn. The technique of reclaiming fiber has long been used as a method of recycling. By reusing existing materials, it requires less energy and has a lower environmental impact.



SGM1284
Curtain : SC7106 Shade : AC2590



SGM1281 NEW
Width 92cm



SGM1282 NEW
Width 92cm



SGM1283 NEW
Width 92cm



SGM1284 NEW
Width 92.5cm ↔ 2.5cm

*The raw materials and their proportions may vary depending on production timing.
*For important guidelines on selection and installation, please refer to the pp.150-159.





SGM1288

SGM1285

Width 92cm

organic cotton

SGM1286

Width 92cm

organic cotton



SGM1285



SGM1286



SGM1287



SGM1288

SGM1287 - SGM1288

Width 92cm

Water-repellent for textile

Jute

*SGM1285, SGM1286 : Due to using the natural material cottonseed hull may attached.

*For important guidelines on selection and installation, please refer to the pp.150-159.



BISHU

The textiles of "BISHU," produced in Bishu — one of the world's three major wool-producing regions — are highly regarded for their superior quality and advanced craftsmanship. This textile brand is trusted not only in Japan but also by top international luxury brands.



SGM1289

NEW



SGM1290

NEW



SGM1291

NEW



SGM1291

Curtain : AC2271

SGM1289 - SGM1291

Width 65cm

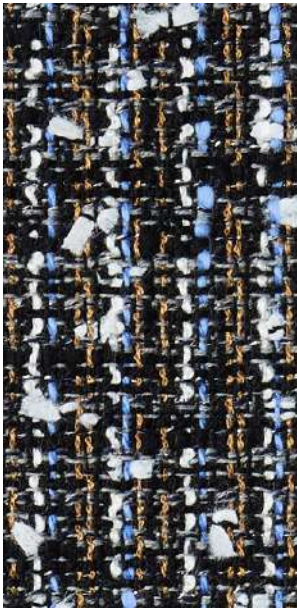
BISHU

*For important guidelines on selection and installation, please refer to the pp.150-159.





SGM1292 NEW



SGM1293 NEW



SGM1294 NEW



SGM1295 NEW

TEXTILE WALLPAPER

SGM1292 - SGM1293

Width 65cm

BISHU

SGM1294 - SGM1295

Width 92cm

*SGM1294 and SGM1295 are not BISHU textiles.
 *For important guidelines on selection and installation, please refer to the pp.150-159.



SGM1296, 1310

Floor Tile: IS-2070-B Rug: HLR-1291 Curtain: SC7016 Shade: SC7623



SGM1296

NEW



SGM1297

NEW



SGM1298

NEW



SGM1299

NEW

SGM1296 - SGM1299

Width 92cm

*The impression of shading will vary depending on the fiber direction.

*For important guidelines on selection and installation, please refer to the pp.150-159.





SGM1300



SGM1301



SGM1302 NEW



SGM1303



SGM1304



SGM1305

SGM1300 - SGM1303

Width 92cm ↔ 92cm

SGM1304 - SGM1305

Width 92cm

*The impression of shading will vary depending on the fiber direction.

*For important guidelines on selection and installation, please refer to the pp.150-159.



SGM1310 NEW



SGM1311



SGM1312

SGM1310 - SGM1312

Width 92cm Water-repellent for textile



TEXTILE WALLPAPER



SGM1313



SGM1314



SGM1315

SGM1313 - SGM1315

Width 92cm Water-repellent for textile

*Products with vertical warping are particularly prone to creases, so please handle with care during installation.
 *For important guidelines on selection and installation, please refer to the pp.150-159.



SGM1316
Width 92cm
Water-repellent for textile



SGM1317
Width 92cm
Water-repellent for textile



SGM1318
Width 92cm
Water-repellent for textile



SGM1319
Width 92cm
Water-repellent for textile



SGM1320
Width 92cm
Water-repellent for textile



SGM1321 **NEW**
Width 92cm
Water-repellent for textile



SGM1322
Width 96cm ±22cm ↔24cm
Water-repellent for textile



SGM1323
Width 95cm
±61.9cm ↔23.8cm
Water-repellent for textile

*SGM1316-1319 : Due to the use of natural materials, cottonseed hulls may be attached.
*For important guidelines on selection and installation, please refer to the pp.150-159.



SGM1324



SGM1325

SGM1324 - SGM1325

Width 92cm Water-repellent for textile



SGM1326

NEW



SGM1327

SGM1326 - SGM1327

Width 95cm ±11.2cm ↔ 11.9cm Water-repellent for textile



SGM1328



SGM1329

SGM1328 - SGM1329

Width 92cm Water-repellent for textile



SGM1330

NEW



SGM1331

NEW

SGM1330 - SGM1331

Width 94.5cm ±30.9cm ↔ 23.7cm Water-repellent for textile

*For important guidelines on selection and installation, please refer to the pp.150-159.



SGM1332



SGM1333

SGM1332 - SGM1333

Width 92cm Water-repellent for textile



SGM1334

NEW



SGM1335

NEW

SGM1334 - SGM1335

Width 92cm Water-repellent for textile



SGM1336

NEW



SGM1337

NEW

SGM1336 - SGM1337

Width 92cm Water-repellent for textile



SGM1338

NEW



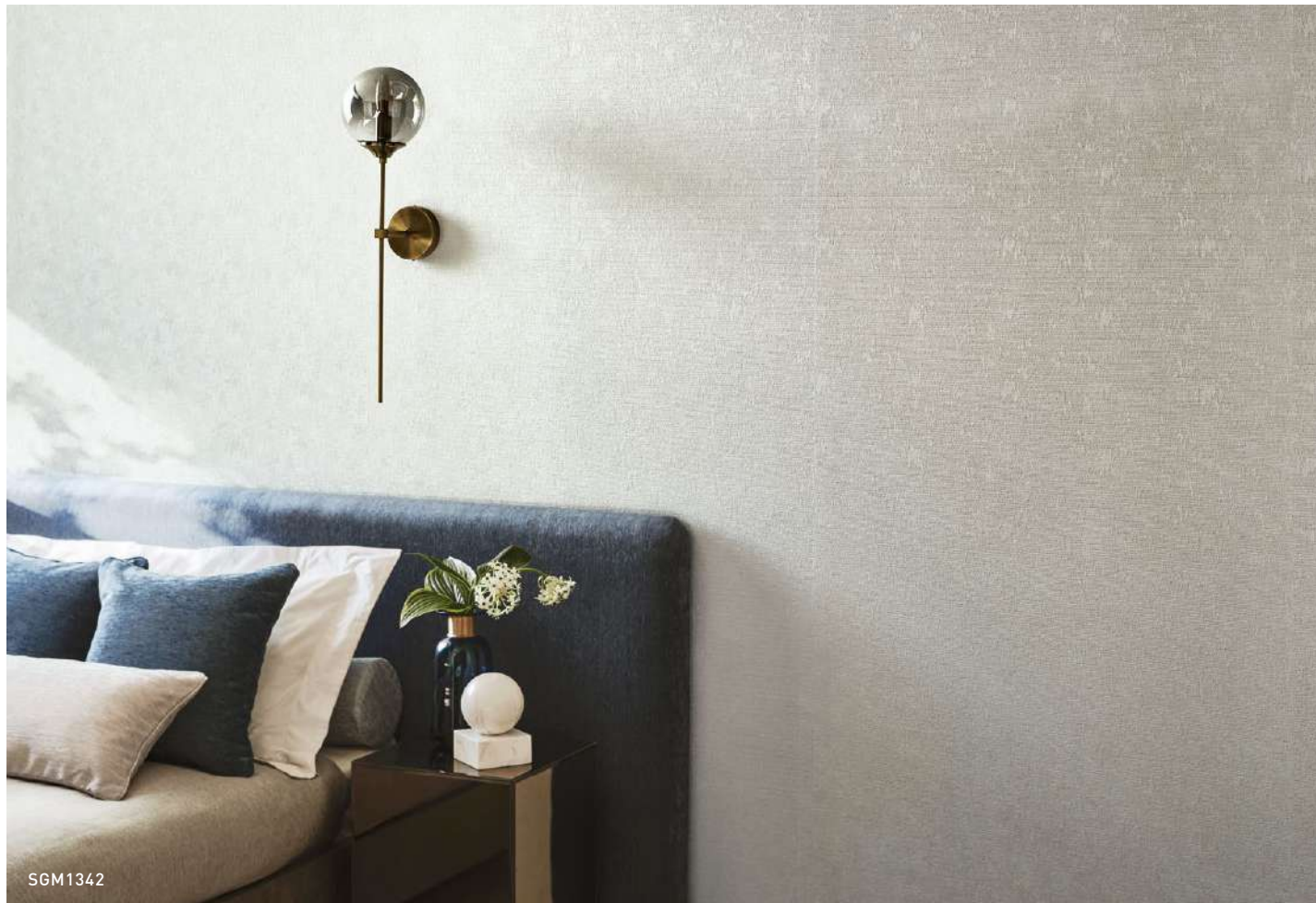
SGM1339

NEW

SGM1338 - SGM1339

Width 92cm Water-repellent for textile

*SGM1338, SGM1339 : Color difference is likely to appear at the joints, we recommend installation with inset seams.
*For important guidelines on selection and installation, please refer to the pp.150-159.





SGM1340



SGM1341

NEW

SGM1340 - SGM1341

Width 96cm ±20.7cm ↔16cm

Water-repellent for textile



SGM1342

NEW



SGM1343

NEW

SGM1342 - SGM1343

Width 93.5cm ±23cm ↔31.2cm

Water-repellent for textile



SGM1344

NEW



SGM1345

NEW



SGM1346

NEW



SGM1347

NEW

SGM1344 - SGM1347

Width 92cm

Water-repellent for textile

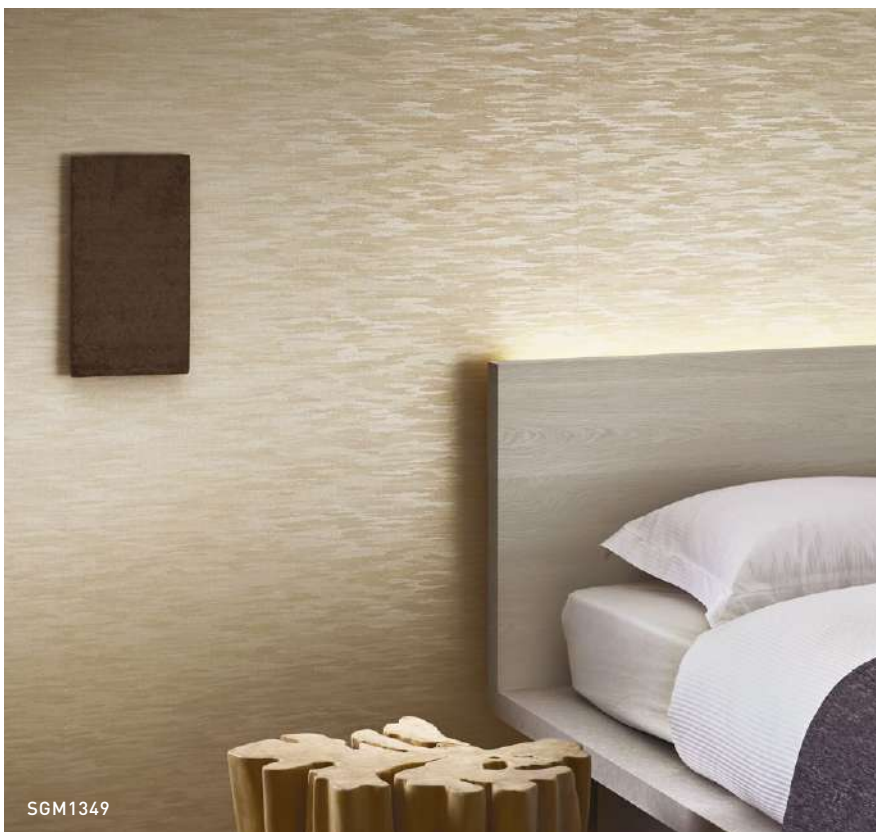


SGM1348



SGM1348

NEW



SGM1349



SGM1349

SGM1348

Width 95.5cm ±16.3cm ↔31.9cm
Water-repellent for textile

SGM1349

Width 96cm ±40.5cm ↔48cm
Water-repellent for textile

*For important guidelines on selection and installation, please refer to the pp.150-159.



SGM1350



SGM1351



SGM1350

Width 92cm ±28.7cm ↔30.8cm
Water-repellent for textile

SGM1351

Width 95.5cm ±56.5cm ↔95.5cm
Water-repellent for textile

*For important guidelines on selection and installation, please refer to the pp.150-159.

ORI

TEXTILE WALLPAPER





SGM1361



SGM1362 NEW



SGM1363



SGM1364 NEW

SGM1361 - SGM1362

Width 92.5cm
Water-repellent for textile

SGM1363 - SGM1364

Width 92.5cm ±5.8cm ↔ 11.6cm
Water-repellent for textile



SGM1365



SGM1366 NEW



SGM1367 NEW



SGM1368 NEW

SGM1365 - SGM1366

Width 92cm
Water-repellent for textile

SGM1367 - SGM1368

Width 92cm ±46.4cm
Water-repellent for textile

*For important guidelines on selection and installation, please refer to the pp.150-159.



SGM1369



SGM1370



SGM1371

SGM1369 - SGM1371

Width 92cm



SGM1369

Carpet Tile : NTH- 71701, 71702, 71703, 71704, 71705



SGM1372



SGM1373



SGM1374

SGM1372 - SGM1374

Width 92cm



SGM1372

*SGM1369-1371 : Due to the nature of these products, creasing may occur.
Please handle with care during installation.

*For important guidelines on selection and installation, please refer to the pp.150-159.



SGM1380



SGM1375



SGM1376 NEW

SGM1375 - SGM1376

Width 92cm



SGM1377



SGM1378

SGM1377 - SGM1378

Width 92cm



SGM1379



SGM1380

SGM1379 - SGM1380

Width 92cm

*For important guidelines on selection and installation, please refer to the pp.150-159.

Textile Wallpaper for Art Galleries and Museums

Maintain the proper exhibition environment in art galleries and museums

Characteristics of the product

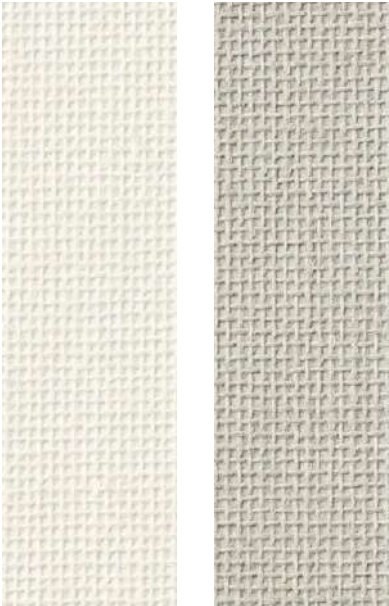
■ **Suppresses the release of ammonia and acetic acid**

If ammonia or acetic acid is present in the indoor environment where cultural assets and artworks are displayed, it may cause deterioration, fading, or discoloration of the exhibits. Museum-grade woven wallpaper minimizes the release of these substances, helping to maintain an optimal display environment.

Release concentration test results of each substance

Measured Substances	Standard concentration	For Art Galleries and Museums Textile Wallpaper
Ammonia	30ppb or lower	30ppb or lower
Acetic acid (as an organic acid)	170ppb or lower	80ppb or lower
Formaldehyde	80ppb or lower	1.46ppb
Acetaldehyde	30ppb or lower	N.D. (indicating below the quantification limit)

*The reference density is a guideline value that is desirable for the display environment.
*Ammonia and acetic acid are measured using passive indicators.
*Formaldehyde and acetaldehyde levels are measured in accordance with JIS A 1901 using the Small Chamber Method.
*Test results are measured values and are not guaranteed.



SGM1381SGM1382

SGM1381 - SGM1382

Sold by roll

Width 92cm × 30m rollFor Museums

*SGM1381 and 1382 are sold by roll unit (30m/roll). They cannot be sold by meters.
*For important guidelines on selection and installation, please refer to the pp.150-159.

TSUCHI

DIATOMACEOUS EARTH / SCATTER COATING

Soil—the foundation that has sustained life
for countless generations.

For centuries, it has formed the walls of homes,
silently witnessing the daily lives of the Japanese people.
Reinterpreting traditional earthen walls in a modern style,
this wallpaper creates a space that feels
both nostalgic and new.







SGM1391



SGM1392



SGM1393



SGM1394



SGM1395

NEW



SGM1396



SGM1393

SGM1391 - SGM1394

Width 92cm Antifungal

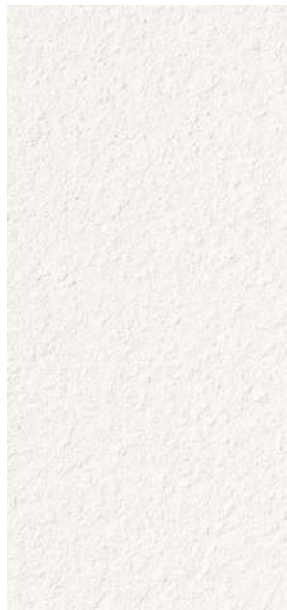
SGM1395 - SGM1396

Width 92cm ±69.8cm ↔ 92cm Antifungal

*SGM1395, SGM1396 : Use vermiculite and do not contain diatomaceous earth.

*For important guidelines on selection and installation, please refer to the pp.150-159.





SGM1397



SGM1398



SGM1399

NEW



SGM1400

NEW



SGM1401

NEW



SGM1402

NEW

SGM1397 - SGM1398

Width 92cm
Antifungal / Deodorant / Humidity Control

SGM1399 - SGM1402

Width 92cm ±73.8cm ↔ 92cm Antifungal
Shell Powder Wallpaper

*For important guidelines on selection and installation, please refer to the pp.150-159.





SGM1403



SGM1404



SGM1405



SGM1406



SGM1407



SGM1408



SGM1409

SGM1403 - SGM1405

Width 92cm ±73.7cm ↔92cm

Random Match

Antifungal / Humidity Control

SGM1406 - SGM1409

Width 92cm

Antifungal / Humidity Control

*For important guidelines on selection and installation, please refer to the pp.150-159.





SGM1410



SGM1411

NEW



SGM1412



SGM1413

SGM1410 - SGM1411

Width 91cm ±40cm ↔45.7cm Antifungal

SGM1412 - SGM1413

Width 92.5cm ±64cm ↔92.5cm Antifungal

*For important guidelines on selection and installation, please refer to the pp.150-159.

STONE·SUEDE

miraslate™ / Ultrasuede®

A wall sheet that faithfully reproduces the texture of natural stone through precision printing technology. Ultrasuede®, a high-quality suede-like artificial leather with a smooth and refined texture that appeals to the senses.

**These meticulously crafted materials,
born from advanced technology and artistry,
captivate discerning designers.**

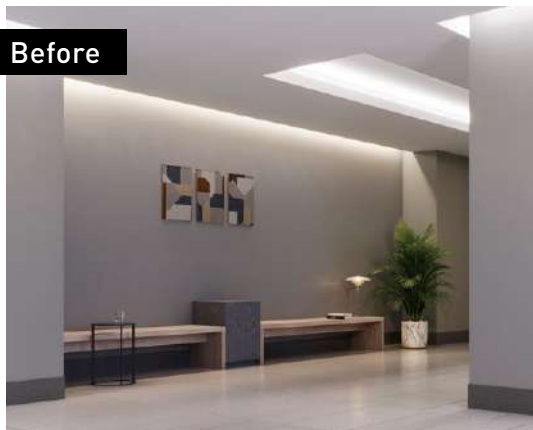
miraslate™

Order-Made Products

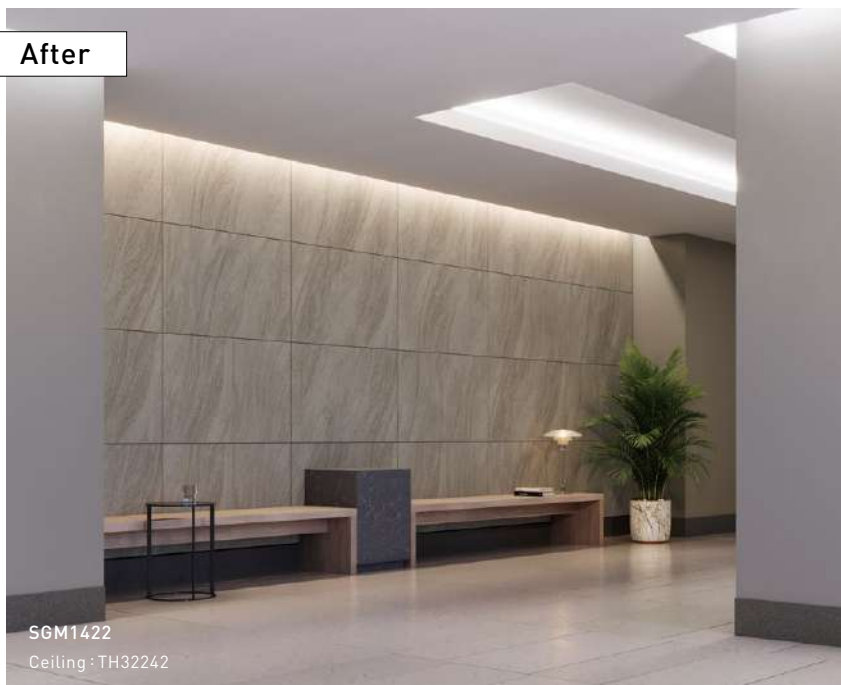
A wallcovering that faithfully reproduces the texture of natural stone through sophisticated printing technology.

Easily elevate your space by using miraslate™ as a wall accent.
We offer 8 designs,
including the beautifully textured "Oya Stone,"
rare natural stone patterns,
and the distinctive wood grain of "Mango Wood."

Before



After



SGM1422
Ceiling : TH32242



1. Lightweight with excellent workability.

Installation on various substrates

miraslate™ is light weight and easy to adhere, allowing for simple installation on various substrates. Its sheet form also makes it easy to cut and suitable for curved surfaces.

Shorter construction period

Because of its lightweight and thin base material, this product can be easily processed and cut on-site, offering excellent workability. It's also suitable for curved (R-shaped) applications.



Each tile features natural color variations and subtle shade differences, ensuring a seamless and natural finish even on large wall surfaces.

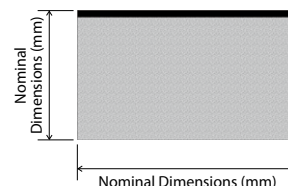
2. Expanded applications with a wide range of designs.

We've lined up a total of 8 designs featuring a rich array of colors and textures.

Product Size

Nominal Dimensions (mm)	Thickness (mm)	Number of sheets (in sqm)
600 × 900 (Product Size : 597 × 897)	1~3	1.9 sheets

Note : Due to the sheet's textured surface, the thickness will vary in different areas.



Installation Procedure

- Before installation, always ensure the surface is cleaned, dried, and free of dirt.
 - When applying to existing substrates, please conduct a thorough inspection for any lifting, cracks, or spalling beforehand and perform appropriate repairs.
 - For installation on existing tiles, stone, or other surfaces not listed below, please contact your sales representative separately.
- Please note that severe unevenness in the substrate may affect the levelness of the finished installation.

■ Gypsum Board

Before cleaning, please treat nail heads and grind the surface, then apply adhesive.

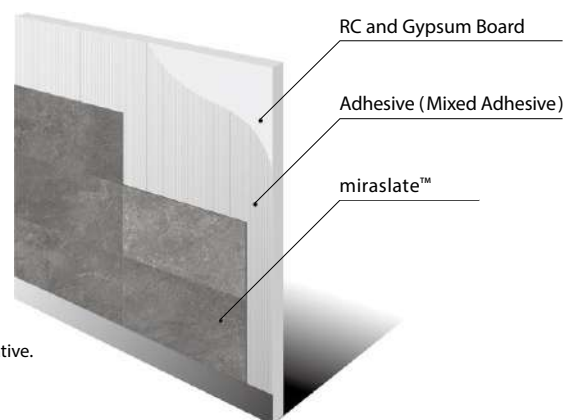
■ RC Surface

After cleaning, apply the adhesive directly and then attach the sheets.

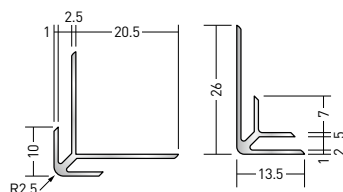
■ Adhesive

Recommended : Mixed Adhesive

*For more details, please contact your sales representative.



We recommend the following products for internal and external corners.

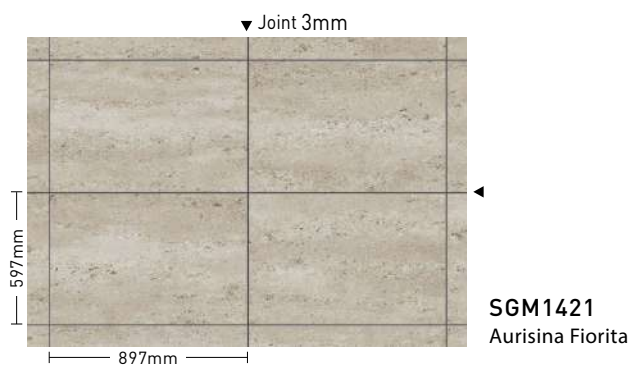


■ External corner trim and Internal corner trim

External Corner Trim : code:55012 aluminum joiner DA-2.5 L=2730/ Soken Co., Ltd.
https://www.soken-sss.co.jp/product/alumi_joiner_n/de_joiner/de_joiner17.html

Internal Corner Trim : code:55032 aluminum joiner BF-2.5 L=2730/ Soken Co., Ltd.
https://www.soken-sss.co.jp/product/alumi_joiner_n/iri_joiner/iri_joiner04.html

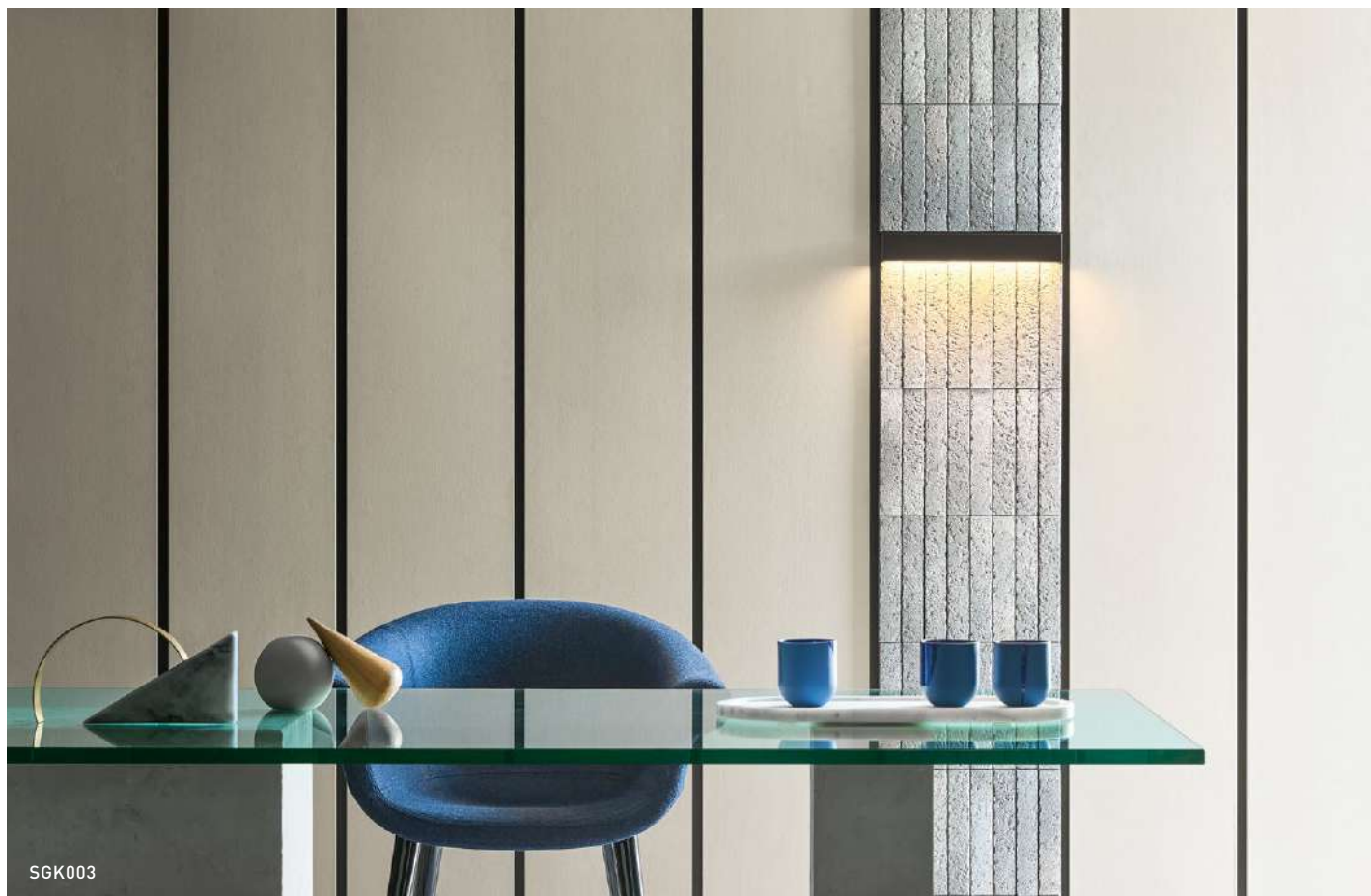




SGM1421 - SGM1428 **NEW** Sold by sheet

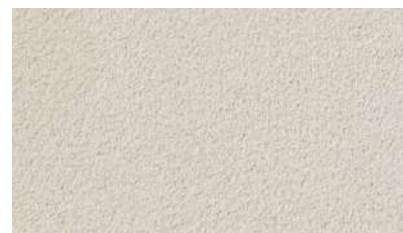
Nominal sheet size 160cm ↔ 90cm

*For important guidelines on selection and installation, please refer to the pp.150-159.



A luxurious suede-like material with advanced quality and functionality. Ultrasuede® is a high-quality, smooth-textured material that appeals to the senses. Its beauty conceals advanced quality and functionality, making it a leading-edge, Japan-quality material globally developed by Toray.

Ultrasuede® is a material that continuously evolves towards a future of "beautiful possibilities."



SGK003

Connecting architectural and interior design to create a calm, sophisticated space.

- Soft touch, luxurious feel.
- Beautiful colors and a wide range of variations.
- Resistant to fading.
- Easy to clean and highly maintainable.
- Lightweight, uniform, and easy to work with.
- Design flexibility with clean-cut edges and versatile post-processing.

SGK001 - SGK020

NEW Sold by roll

Width 92cm × 15m roll
Paper-based Wallpaper

Specification

Fabric weight	170g/sqm
Thickness	0.5mm
Fiber diameter	0.15dtex
Material Composition	Surface : 65% Polyester, 35% Polyurethane Backing : Backing Paper

Material Care Instructions

- The color of this material may appear to vary depending on the viewing direction and angle. This is due to the directional nap of the material's fibers, not a difference in color.
- When combining Ultrasuede® or other light-colored materials with medium to dark shades of Ultrasuede®, please be aware that color transfer may occur. We strongly recommend taking this into consideration beforehand.
- Ultrasuede® is made of very fine fibers, giving it a soft texture. Repeated rubbing can cause fuzz to transfer to other materials, or lead to pilling and tearing.
- We use very fine fibers to create Ultrasuede's unique touch. Because of this, high heat can damage its delicate feel or leave burn marks. Please be especially careful around cigarette embers, stoves, and other heat sources.

Sick Building Syndrome Countermeasures

JIS or Minister's Certification Classification	JIS or Minister's Certification Number	Formaldehyde Emission Class
JIS Certification	GB0508022	F☆☆☆☆

Care Instructions

- For light scuffs or dust, gently brush the surface with a lint roller or wipe it with a damp cloth.
- For heavier stains, dilute a neutral detergent to about 10 times its volume with water. Dampen a soft cloth or sponge with this solution and wipe the stained area, then wipe thoroughly with a damp cloth to ensure no detergent residue remains.
- To avoid water rings, gradually blend the cleaned area outwards from the center. After drying, brush the material to restore its nap.

Installation Precautions

- Basically, you can install it using the same methods as regular wallpaper.
- When performing the overlapped cutting method for installation, gently brush the seams with a lint roller or similar tool as a final finish to make the seams less noticeable.
- Ensure the substrate is smooth, and be careful not to get adhesive on the surface nap.

Accent Panels (Cushion Type)

Order-Made Products

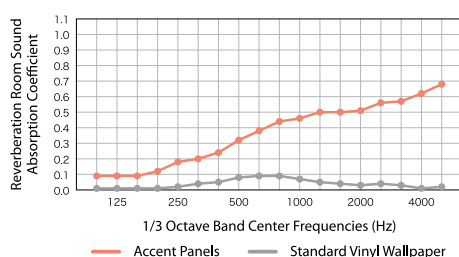
Accent Panels are made of a polyurethane core covered with fabric. The three-dimensional nature of these panels will further enhance your interior design.



Product Features

- You can create panels that perfectly match your vision by freely choosing the fabric and size.
- Installation is easy since no adhesive is used. This is a hook-and-loop fastener (Velcro) installation method.
- Since the panels are lightweight, they are easy to remove during renovations.
- Because they have sound-absorbing properties, these panels are recommended for spaces like bedrooms and home theater rooms.

Acoustic Absorption Performance of Installed Accent Panels



The testing method adheres to JIS A 1409.
*Please note that the test results in the left figure are measured values and not guaranteed values.

How to Order

- ① Please choose your fabric from our curtain and upholstery fabric selection.
- ② Please Specify the Size.
* You can specify the size in 1 cm increments.

Production size range

Min. size : 30cm × 30cm
Max. size : 90cm × 180cm
Thickness : approx. 2.6cm

*For more details, please contact your sales representative.



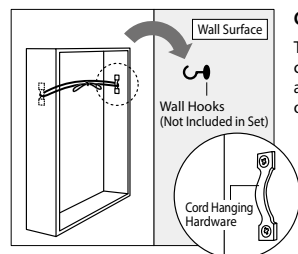
Panel Art (Wall-Mounted)

Order-Made Products

Panel Art lets you decorate your space with an artistic flair, using wallpaper or curtain fabrics. You can enjoy it as a room accent, much like displaying a piece of art.

Product Features

- You can freely choose the fabric and size from our selection of wallpaper, curtain, and upholstery materials.
- Installation is easy because specialized components are included in the set. We offer two types: cord hung type and cleat-hung type.



Cord-Hung Type

The panel comes with cord hanging hardware and a white hanging cord on the inside.

How to Order

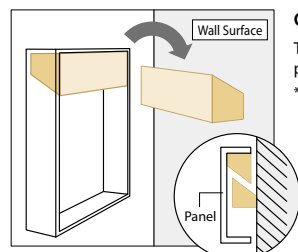
- ① Please choose your fabric from our curtain and upholstery fabric selection.
- ② Please Specify the Size.
* You can specify the size in 1 cm increments.
- ③ Please select the installation type.

Production size range

Min. size : 30cm × 30cm
Max. size : 90cm × 180cm
Thickness : approx. 2.5cm

*Please note that if one side of the panel exceeds 90 cm in length, the panel thickness will be approximately 3 cm.

*The base material is lauan plywood.



Cleat-Hung Type

The set includes wood pieces for wall mounting.
*Please note that mounting screws are not included.



Panel Art : SGM1189

*For more details, please contact your sales representative.

Molding (Decorative Trim)

These moldings can be used for ceiling cornices, wainscoting caps, or picture frames to add an elegant touch to your interior.

Product Features

■ Enhanced Grade

With its sophisticated design, it creates a luxurious space that is a cut above the rest. It can be used broadly, from traditional European interiors to modern styles.

■ Quick Installation

It offers excellent dimensional stability and good workability, which helps to improve work efficiency.

Frame



This trim can be widely used as a divider for separating wall finishes on upper and lower wall sections, and also as framing or accent decoration for wall-mounted items like artwork.

◀ MM90 (Frame)

Ceiling Trim



Used at the junction between the ceiling and wall, this molding elevates the overall look of the interior.

◀ MM72 (Ceiling Trim)
MM84 (Frame)

Please check our website for our product lineup. ▶



*Thickness, size, and color may vary slightly.
Please make any necessary adjustments on-site during installation.
*The validity period of mold samples may differ from that of the catalog.
Specifications and prices are subject to change during the catalog's validity period.



Molding : MM81, 84

Smart Joiner (Trim)

Smart Joiner SLIM

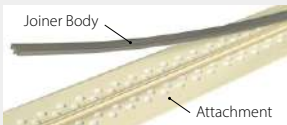
Flat trim for beautifully finishing wallpaper joints.

This is a slim and stylish 7mm wide trim. It's a pre-installation type of flat trim, designed to have its attachment piece installed on the substrate beforehand.



POINT 1

Install the main joiner body by snapping it into the attachment that's already been installed on the substrate.



POINT 2

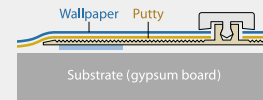
A simple shape that blends well with various interior spaces.



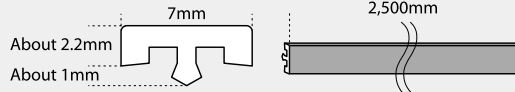
For Flat Surfaces

Installation Image

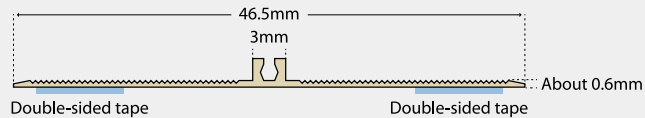
- ① Attach the attachment to the substrate using both the included double-sided tape and adhesive.
- ② Smooth out the step between the substrate and the attachment by applying putty.
- ③ Apply wallpaper on the wall.
- ④ Attach the joiner body.



Joiner Body (H2,500mm x W7mm)



Attachment (H2,500mm x W46.5mm)



The joiner body and attachments are sold separately. Please order two types of parts: the joiner body (SRJ-211 to SRJ-253) and the attachment (SRJ-AT1) for installation.

Smart Joiner EASY

For Flat Surfaces

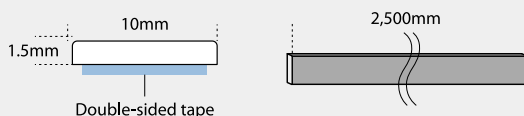
A retrofit trim for flat surfaces, featuring a simple design and easy installation.

This is a 10mm wide trim for flat surfaces that can be easily installed over existing wallpaper.



POINT

You can easily install it over existing wallpaper using the included double-sided tape in combination with instant adhesive (BB-546).



Smart Joiner CORNER

For Corner

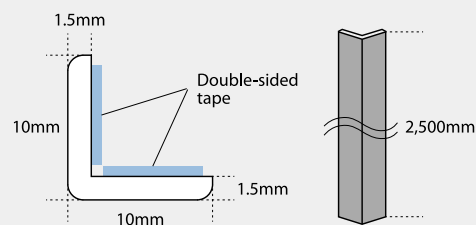
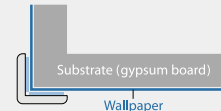
Perfect for reinforcing corners and pattern separation.

This is a retrofit corner trim designed to reinforce corners and allow for distinct wallpaper separation at external corners.



POINT

You can easily install it over existing wallpaper using the included double-sided tape in combination with instant adhesive (BB-546).



Size : H2,500mm x W10mm (90°)



■ Smart Joiner Product List

Color and Material	Solid Color Material : ABS resin laminated with olefin sheet						Metallic Material : ABS resin laminated with PVC sheet		
	White	Off White	Ivory	Light Greige	Warm Grey	Black	Silver	Champagne Gold	Gold
Smart Joiner SLIM (Attachments are sold separately.)	SRJ-211	SRJ-212	SRJ-213	SRJ-214	SRJ-215	SRJ-216	SRJ-251	SRJ-252	SRJ-253
Smart Joiner EASY	EGJ-411	EGJ-412	EGJ-413	EGJ-414	EGJ-415	EGJ-416	EGJ-451	EGJ-452	EGJ-453
Smart Joiner CORNER	SCN-11	SCN-12	SCN-13	SCN-14	SCN-15	SCN-16	SCN-51	SCN-52	SCN-53

■ Smart Joiner SLIM Attachment

Item no. : SRJ-AT1

COLORED SEALANT

- 40 delicate colors to meet your needs
- Convenient one-touch caulking agent for interior
- New glossy type^{*2} and clear color

Available in
35 colors **Small type**

BB-100 ~ BB-135
10 Pieces/Case, 5 Cases/Box

Content : 200g/Piece
Main component : Acrylic copolymer resin
Usage capacity : 40m/200g
Suitable substrate : Gypsum Board



Application One-touch caulking agent for interior

How to use Please use protective tape to protect surrounding areas from adhesion. Before filling, clean the surface and cut the nozzle tip appropriately. Please flatten with a wet finger after filling. Please protect the tip of the nozzle with tape after use.

Note Do not use if there is a wide gap against the nozzle. Please note that the appearance of the actual product differs from the color shown in the sample book. The color before curing may differ from the target color. Prices, specifications and lineup are subject to change without notice.

Available in
5 colors **Large type**

BB-467 ~ BB-475
6 Pieces/Case, 4 Cases/Box

Content : 500g/Piece (340g for Clear color only)
Main component : Acrylic emulsion resin
Usage capacity : 100m/500g
Suitable substrate : Gypsum Board



BB-467 *1 *2 White	BB-469 *1 *2 Light Ivory	BB-125 Sunny Brown	BB-111 Light Blue
BB-129 Blue White	BB-468 *1 Ivory	BB-130 Light Brown	BB-128 Blue Green
BB-118 Sky Gray	BB-112 Light Natural	BB-108 Caramel	BB-127 Blue
BB-122 Shadow White	BB-113 Natural	BB-115 Brown	BB-105 Dark Blue
BB-109 Light Gray	BB-120 Light Beige	BB-114 Dark Brown	BB-104 Light Purple
BB-126 *2 Dark White	BB-470 *1 New Beige	BB-100 *2 Black	BB-103 Light Pink
BB-119 Gray	BB-106 Beige	BB-135 *3 Real Black	BB-134 Red
BB-107 Ash Gray	BB-124 Ecru Beige	BB-475 *1 Clear	BB-133 Terracotta
BB-116 Moss Gray	BB-123 Sand Beige		BB-102 Yellow
BB-117 Dark Gray	BB-132 Rose Beige		BB-101 Light Green
BB-121 Rose Gray			BB-131 Olive Green

*1 : Large type (all other items are in small type)

*2 : Matte type is also available.

*3 : Matte type only

When ordering matte type, please add M to the end of the part number.

ADHESIVE



Water-based

Dilution Type

NEW Sangetsu Adhesive

BB-378 18kg

Main component : Starch
Color : White
Suitable substrate : Gypsum Board
JIS classification : Type2, No.1
Usage capacity : 180sqm/18kg

Application Adhesive for various wallpapers

How to use The mixing ratio of glue and water is basically 10:7 and mix it evenly.

Standard Starch Paste Type

- An indoor-environmentally friendly adhesive, free of formaldehyde.

JIS/F☆☆☆☆



Water-based

Individually packaged
in small packs

Undiluted Type

MIXED Adhesive 100

BB-304 18kg (6kg × 3packs)

Main component : Starch and Vinyl acetate
Color : White
Suitable substrate : Gypsum Board
JIS classification : Type2, No.2
Usage capacity : 100-120sqm/18kg

Application Adhesive for various wallpapers

How to use Please use undiluted solution.

JIS/F☆☆☆☆

Compatible with Vinyl Wallpaper to Eco-Friendly Wallpaper

- The combination of vinyl acetate provides high adhesion.
- An indoor-environmentally friendly adhesive, free of formaldehyde.
- Offers a long open time, allowing for stress-free and efficient application.

Important guidelines on selection

Important guidelines on selection (General Information)

1. Antifungal Function

Based on the performance regulations for antifungal wallpaper established by the Wallcoverings Association, products with 0 test results are marked with "Antifungal".

Mycelial Growth	Results
No mold growth is visible to the naked eye or under the microscope.	0
Mold growth is not visible to the naked eye, but visible clearly under a microscope.	1
Mold growth is visible to the naked eye and the area of growth is less than 25% of the total sample area.	2
Mold growth is visible to the naked eye, and the area of growth is 25% or more and less than 50% of the total area of the sample.	3
The mycelium spreads actively, covering more than 50% of the total sample surface.	4
The mycelium grows vigorously, covering the entire surface of the sample.	5

*The display calculates the average of 5 points of test pieces, rounded off to the first decimal place.

Although Antifungal products are treated with Antifungal finish, wallpaper alone cannot prevent mold growth. The growth of mold is greatly affected by the structure of the building and the indoor environment. Always maintain good ventilation to reduce humidity. Adding Antifungal agent to the glue at the time of installation is more effective.

2. Surface Strengthen Function

Based on the performance regulations for surface strengthen wallpaper established by the Wallcoverings Association, products with test results of grade 4 or above are marked as "surface strengthen".

Grade	Criteria
Grade 5	No visible change at first glance.
Grade 4	Some surface scratches are seen, but no comparatively large surface layer breakage, etc.
Grade 3	The tear of the surface layer is clearly visible.
Grade 2	The surface is torn and the backing paper is clearly visible (length less than 1 cm).
Grade 1	The surface is torn and the backing paper is clearly visible (1 cm or more in length).

3. Functional Wallpaper

As for functional wallpapers, please understand the characteristics and cautions of each before selecting.

4. Environments

Please avoid using the product in high temperature, high humidity, wet environment or outdoors. Should the product be applied to surfaces with significant gaps, such as near the ceiling or indirect lighting, it is recommended to choose a thicker product.

5. Pattern Match

Please note that products that require pattern matching will require more length than solid color products. When installing the product, please refer to the "repeat" indication on the catalog to match the pattern.

6. Product using Pearl Ink and Glitter

Please note that the products with pearl ink or glitter, particles on the wallcovering surface may adhere if it is rubbed with clothing.

7. Installation Cost

Compared to standard PVC wallpaper, materials such as washi paper, foil wallpaper, and textile wallpaper require a more complex installation process, which may lead to higher installation costs. To ensure the best choice, please review the product characteristics and site conditions in advance.

Important guidelines on selection and installation

For important guidelines on selection and installation of each product, please refer to the contents of each category on pp.151-156.

Product	[Classification] Important guidelines on selection and installation
ELEMENTUM	
SGM1001 - SGM1015	G
SGM1016 - SGM1023	J
SGM1024 - SGM1031	M
SGM1032 - SGM1041	D
COLOR SELECTION	
SGM1051 - SGM1062	F
SGM1063 - SGM1068	G
SGM1069 - SGM1074	J
SGM1075 - SGM1092	M
SGM1093 - SGM1097	G
SGM1098 - SGM1109	D
WASHI / TRADITIONAL JAPANESE PAPER	
SGM1111 - SGM1134	D
SGM1135	A
SGM1136	C
SGM1137 - SGM1152	A
SGM1153 - SGM1155	B
SGM1156 - SGM1165	A
FOIL	
SGM1181 - SGM1195	E
SGM1196 - SGM1208	L
CORK	
SGM1221 - SGM1230	N
PAPER WEAVE	
SGM1241 - SGM1266	J
TEXTILE WALLPAPER	
SGM1271 - SGM1295	G
SGM1296 - SGM1305	H
SGM1310 - SGM1351	G
TEXTILE WALLPAPER	
SGM1361 - SGM1380	G
SGM1381 - SGM1382	I
DIATOMACEOUS EARTH, SCATTER COATING	
SGM1391 - SGM1413	M
miraslate™	
SGM1421 - SGM1428	O
Ultrasuede®	
SGK001 - SGK020	K

Important guidelines on selection and installation by classification (General Information)

Important guidelines on installation

- Carefully prepare the substrate and smooth the installation surface.
- When installing on a mortar or plywood base, apply a sealer treatment to prevent blisters and marks. SA Sealer (BB-318) is recommended to use. The sealer treatment stabilizes the breathability of the substrate and reduces the aging of the wallpaper surface.
- Avoid sudden temperature changes due to direct sunlight or air conditioning, and environmental changes such as dryness. It may cause gaps between the joints.

A. Paper-based Wallpaper : Hand-Crafted Japanese Paper

Feature : Handcrafted wallpaper made from traditional Japanese washi paper, with unique techniques applied to each sheet.

Important guidelines on selection

- As each product is handcrafted, colors and textures may vary. Please note that seams may not align perfectly.
- Please note that lumps of kozo fiber, which is the raw material, may be mixed in. This is a characteristic texture of natural materials.
- Since whitewash is applied on top of bleached kozo fiber, brown kozo fiber or skin may appear. Please note that this product has a unique texture of natural materials.
- Due to the use of natural materials, color variations may occur at the seams.
- Please handle with extra care, as it is made from natural materials.
- Installation may be more expensive due to the higher level of skill required.

Important guidelines on installation

- We recommend to layout the pieces and check the overall balances of colors and patterns before the installation.
- The recommended adhesive for Japanese Paper Wallpaper varies from product to product.
- After gluing, please fold it loosely to avoid creases and avoid stacking.
- The recommended open time is at least 15 minutes, but it varies with temperature and humidity. Adjust accordingly to site conditions. Excessive open time may cause drying, leading to joint gaps, misalignment, or difficulty in adjustment, which can affect installation quality.
- Apply the adhesive evenly. Do not use gluing machine for this products.
- Overlapping joint is recommended.
- *We recommend Overlap cutting for SGM1142 and 1143 due to its characteristics.
- Use a soft brush and avoid hard tools like metal spatulas.
- Remove any glues on surface immediately with squeezed sponge or cloth.

B. Paper-based Wallpaper : Hand-Crafted Japanese Paper (Lacquer)

Feature : Hand-crafted Japanese Paper Wallpaper which is using lacquer.

Important guidelines on selection

- As each product is handcrafted, colors and textures may vary. Please note that seams may not align perfectly.
- Please note that lumps of kozo fiber, which is the raw material, may be mixed in. This is a characteristic texture of natural materials.
- Due to the use of natural materials, color variations may occur at the seams.
- Please handle with extra care, as it is made from natural materials.
- Installation may be more expensive due to the higher level of skill required.

Important guidelines on installation

- We recommend to layout the pieces and check the overall balances of colors and patterns before the installation.
- The recommended adhesive is BB-307.
- After gluing, fold it loosely to avoid creases and please avoid stacking.

- The recommended open time is at least 30 minutes, but it varies with temperature and humidity. Adjust accordingly to site conditions. Excessive open time may cause drying, leading to joint gaps, misalignment, or difficulty in adjustment, which can affect installation quality.
- Apply the adhesive evenly. Do not use gluing machine for this products.
- Overlapping joint is recommended. To enhance adhesion, please sand the surface of overlapping areas.
- Use a soft brush and avoid hard tools like metal spatulas.
- Due to the characteristics of the product, there is a risk of the surface.
- Remove any glues on surface immediately with squeezed sponge or cloth.

C. Paper-based Wallpaper : Hand-Crafted Japanese Paper (Transparent)

Feature : Translucent Hand-crafted Japanese Washi Wallpaper.

Important guidelines on selection

- As each product is handcrafted, colors and textures may vary. Please note that seams may not align perfectly.
- Since whitewash is applied on top of bleached kozo fiber, brown kozo fiber or skin may appear. Please note that this product has a unique texture of natural materials.
- Due to the use of natural materials, color variations may occur at the seams.
- Please handle with extra care, as it is made from natural materials.
- Installation may be more expensive due to the higher level of skill required.

Important guidelines on installation

- We recommend to layout the pieces and check the overall balances of colors and patterns before the installation.
- Since this product tends to allow the substrate to show through, apply Color Sealer Muhen (white) (manufactured by Yayoi Chemical Industry Co., Ltd.) to the entire surface before installation.
- The recommended adhesives are BB-378 and Wall Bond 105 (Manufactured by Wall bond Industries Co., Ltd.).
- After applying the adhesive, fold the material loosely to avoid creases and avoid stacking.
- The recommended open time is at least 10 minutes, but it varies with temperature and humidity. Adjust accordingly to site conditions. Excessive open time may cause drying, leading to joint gaps, misalignment, or difficulty in adjustment, which can affect installation quality.
- Apply the adhesive evenly. Do not use gluing machine for this products.
- Overlapping joint is recommended.
- When applying the rollers, use a cloth or paper to apply the rollers, and be careful not to damage the texture.
- Use a soft brush and do not use hard tools such as metal spatulas.
- Remove any glues on surface immediately with squeezed sponge or cloth.

D. Paper-based Wallpaper : Machine-Made Japanese Paper

Feature : Transparent Hand-crafted Japanese paper Wallpaper.

Important guidelines on selection

- Please note that due to the use of natural materials seams may not align perfectly.

- Please note that lumps of kozo fiber, which is the raw material, may be mixed in. This is a characteristic texture of natural materials.
- Since whitewash is applied on top of bleached kozo fiber, brown kozo fiber or skin may appear. Please note that this product has a unique texture of natural materials.
- Long pieces of straw or hemp may come off.

Important guidelines on installation

- Use putty of the same color as the substrate. Special care should be taken with products that are thin in thickness or white in color.
- The recommended adhesives are BB-378 and BB-304.
- After gluing, fold it loosely to avoid creases and please avoid stacking.
- The recommended open time is at least 10 minutes, but it varies with temperature and humidity. Adjust accordingly to site conditions. Excessive open time may cause drying, leading to joint gaps, misalignment, or difficulty in adjustment, which can affect installation quality.
- Apply the adhesive evenly, and be careful not to create any puddles.
- Overlapping joint is recommended.
- Do not use a roller or similar tool to apply strong pressure to the overlapping area. Instead, use a brush or another tool to press it down.
- Use a soft brush and avoid hard tools like metal spatulas.
- Remove any glues on surface immediately with squeezed sponge or cloth.

E. Paper-based Wallpaper : Foil Wallpaper

Feature : Wallcovering which is using foils.

Important guidelines on selection

- As each product is handcrafted, colors and textures may vary. Please note that seams may not align perfectly.
- Please handle with extra care, as it is made from natural materials.
- Do not install on non-water-absorbent substrates such as metal plates.
- Do not install the product around water, such as kitchen and bathrooms, or other places where water may splash.
- Installation may be more expensive due to the higher level of skill required.

Important guidelines on installation

- To fix the curl, unpack and rewind (Reverse) the roll a day before installation.
- In the case of indirect lighting, the substrate may stand out.
- The recommended adhesives are BB-378 and Wall Bond 105 (Manufactured by Wall bond Industries Co., Ltd.).
- After gluing, fold it loosely to avoid creases and please avoid stacking.
- The recommended open time is at least 15 minutes, but it varies with temperature and humidity. Adjust accordingly to site conditions. Excessive open time may cause drying, leading to joint gaps, misalignment, or difficulty in adjustment, which can affect installation quality.
- Apply the adhesive evenly, and be careful not to create any puddles. We recommend applying the adhesive by hand.
- Attaching outlet covers or similar items before the adhesive dries can cause discoloration, so please ensure they are installed only after the adhesive is completely dry.
- Overlapping joint is recommended. To enhance adhesion, please sand the surface of overlapping areas. Use a protective cloth or paper over the overlap and press down firmly with a roller.
- Use a soft brush and do not use hard tools such as metal spatulas.
- If sweat or glue adhere on the surface of the wallpaper, wipe it off with a damp microfiber cloth, and then thoroughly wipe away any moisture with a dry microfiber cloth. Please take extra care during installation in the summer, as sweat can easily adhere to the surface.

Important guidelines on selection and installation

F. Paper-based Wallpaper : Direct Fleece Wallcovering (Made in Japan)

Feature : Wallpaper which directly prints on fleece paper.

Important guidelines on selection

- Please note that the solid area of the wallpaper is easily scratched.
- Due to the characteristics of the material, partial discoloration may occur due to aging.

Important guidelines on installation

- The recommended adhesives are BB-378 and BB-304.
- After gluing, fold it loosely to avoid creases and please avoid stacking.
- The recommended open time is at least 15 minutes, but it varies with temperature and humidity. Adjust accordingly to site conditions. Excessive open time may cause drying, leading to joint gaps, misalignment, or difficulty in adjustment, which can affect installation quality.
- Use a soft brush and avoid hard tools like metal spatulas.
- If glue adheres to the surface of the wallpaper, wipe it off quickly by dabbing with a clean, dry cloth.

G. Textile Wallpaper

Feature : Woven wallpaper produced through diverse weaving techniques.

Important guidelines on selection

- Due to the characteristics of the product, color differences or misalignment may occur at the joints.
- Please note that fiber knots may be visible on the wallpaper surface due to the manufacturing process.
- The pattern does not match exactly. Please note that the joint part may be noticeable.
- Although we apply anti-fray treatment to textile wallpaper, it is not possible to completely prevent fraying.

Important guidelines on installation

- Use putty of the same color as the substrate. Special care should be taken with products that are thin in thickness or white in color.
- The recommended adhesives is BB-378. Due to the difference in the expansion and contraction rate between the surface textile and the backing paper, the backing paper may wrinkle, which may affect the surface textile, so please pay attention to the selection of the adhesive and amount applied.
- After gluing, fold it loosely to avoid creases and please avoid stacking. Especially for the vertical warping products it easily get wrinkled so please handle with extra care.
- The recommended open time is at least 20 minutes, but it varies with temperature and humidity. Adjust accordingly to site conditions. Excessive open time may cause drying, leading to joint gaps, misalignment, or difficulty in adjustment, which can affect installation quality.
- Install with attention to the top and bottom directions so that the selvage threads are on the right side.
- Use a soft brush or urethane roller to crimp. Stroke in a constant direction and be careful not to fray the edges.
- Always use a cutter with a sharp edge, and install with underlayment tape (BB-471) to avoid cutting into the surface of the substrate board.
- Please join the edges with the effective widths.
- Do not use a damp cloth nor detergents as it may become a stain.
- Keep away from water droplets as it may leave a mark as a ring stain.
- If glue adheres to the surface of the wallcovering, wipe it off quickly by dabbing with a clean, dry cloth.

H. Textile Wallpaper (Fur)

Feature : Wallpaper made with raised pile fabric.

Important guidelines on selection

- Due to the characteristics of the product, there may be color differences at the joints.
- The pattern does not match exactly. Please note that the joint part may be noticeable.

Important guidelines on installation

- Use putty of the same color as the substrate. Special care should be taken with products that are thin in thickness or white in color.
- The recommended adhesives is BB-378.
- After gluing, fold it loosely to avoid creases and please avoid stacking.
- The recommended open time is at least 10 minutes, but it varies with temperature and humidity. Adjust accordingly to site conditions. Excessive open time may cause drying, leading to joint gaps, misalignment, or difficulty in adjustment, which can affect installation quality.
- Apply the adhesive evenly. Do not use gluing machine for this products.
- Install with attention to the top and bottom directions so that the selvage threads are on the right side.
- Use a soft brush or urethane roller to crimp. Stroke in a constant direction and be careful not to fray the edges. Be sure not to cut the fur.
- Always use a cutter with a sharp edge, and install with underlayment tape (BB-471) to avoid cutting into the surface of the substrate board.
- Please join the edges with the effective widths.
- Do not use a damp cloth nor detergents as it may become a stain.
- If glue adheres to the surface of the wallcovering, wipe it off quickly by dabbing with a clean, dry cloth.

I. Textile Wallpaper (For Art Galleries and Museums)

Feature : Textile wallcovering that suppresses the release of ammonia and acetic acid to maintain a comfortable exhibition space.

Important guidelines on selection

- Due to the nature of the product, color variations or misalignment may occur at the joints.
- Please note that fiber knots may be visible on the wallpaper surface due to the manufacturing process.
- The pattern does not completely match. Please note that the joint part may be noticeable.
- Although we apply anti-fray treatment to textile wallpaper, it is not possible to completely prevent fraying.

Important guidelines on installation

- Use putty of the same color as the substrate. Special care should be taken with products that are thin in thickness or white in color.
- The recommended adhesives is BB-378. Due to the difference in the expansion and contraction rate between the surface textile and the backing paper, the backing paper may wrinkle, which may affect the surface textile, so please pay attention to the selection of the adhesive and amount applied.
- After gluing, fold it loosely to avoid creases and please avoid stacking.
- The recommended open time is at least 10 minutes, but it varies with temperature and humidity. Adjust accordingly to site conditions. Excessive open time may cause drying, leading to joint gaps, misalignment, or difficulty in adjustment, which can affect installation quality.
- Install with attention to the top and bottom directions so that the selvage threads are on the right side.

- Use a soft brush or urethane roller to crimp. Stroke in a constant direction and be careful not to fray the edges.
- Always use a cutter with a sharp edge, and install with underlayment tape (BB-471) to avoid cutting into the surface of the substrate board.
- Please join the edges with the effective widths.
- Do not use a damp cloth nor detergents as it may become a stain.
- Keep away from water droplets as it may leave a mark as a ring stain.
- If glue adheres to the surface of the wallcovering, wipe it off quickly by dabbing with a clean, dry cloth.

J. Textile Wallpaper Paper Textile / Sisal / Manila hemp

Feature : Wallpaper woven with natural fibers (paper and linen).

Important guidelines on selection

- Due to the natural material, the joints will not match. Also, please note that the color of the product is not even.
- Please note that fiber knots may be visible on the wallpaper surface due to the manufacturing process.

Important guidelines on installation

- The recommended adhesives are BB-378 and BB-304.
- After gluing, fold it loosely to avoid creases and please avoid stacking.
- The recommended open time is at least 10 minutes, but it varies with temperature and humidity. Adjust accordingly to site conditions. Excessive open time may cause drying, leading to joint gaps, misalignment, or difficulty in adjustment, which can affect installation quality.
- Always use a cutter with a sharp edge, and install with underlayment tape (BB-471) to avoid cutting into the surface of the substrate board.
- Please join the edges with the effective widths.
- If glue adheres to the surface of the wallcovering, wipe it off lightly with a hard sponge or cloth.
- If you are concerned about the fluffiness of the sisal, cut it with scissors.

K. Textile Wallpaper Ultrasuede

Feature : Wallpaper made of ultrafine fiber.

Important guidelines on selection

- Due to the characteristics of the product, there may be color differences at the joints.

Important guidelines on installation

- Use putty of the same color as the substrate. Special care should be taken with products that are thin in thickness or white in color.
- The recommended adhesives are BB-378.
- After gluing, fold it loosely to avoid creases and please avoid stacking.
- The recommended open time is at least 10 minutes, but it varies with temperature and humidity. Adjust accordingly to site conditions. Excessive open time may cause drying, leading to joint gaps, misalignment, or difficulty in adjustment, which can affect installation quality.
- Apply the adhesive evenly, and be careful not to create any puddles.
- Install with attention to the top and bottom directions so that the selvage threads are on the right side.
- Use a soft brush or urethane roller to crimp. Stroke in a constant direction and be careful not to fray the edges. Be sure not to cut the fur.
- Always use a cutter with a sharp edge, and install with underlayment tape (BB-471) to avoid cutting into the surface of the substrate board.
- Please join the edges with the effective widths.
- Do not allow the glue to adhere to the surface of the wallpaper.

L. PVC Wallpaper, Paper-based Wallpaper Aluminum Foils, Aluminum-Metallized Wallpaper

Feature : Aluminum foils and aluminum-metallized wallpaper with printing designs.

Important guidelines on installation

- When the room temperature is low, warm the site and material before the installing. Blister likely to occur at low temperature.
- The recommended adhesives are BB-378 and BB-304. For diluted glues, use reinforcing glue 300 BB-451 if necessary.
- After gluing, fold it loosely to avoid creases and please avoid stacking.
- The recommended open time is at least 30 minutes, but it varies with temperature and humidity. Adjust accordingly to site conditions. Excessive open time may cause drying, leading to joint gaps, misalignment, or difficulty in adjustment, which can affect installation quality.
- When installing external corners, firmly press down the folded wallpaper surface with a clean cloth. Please note that this product is laminated with metal and is therefore stiffer compared to regular PVC wallpaper.
- Please use a cloth or paper between the roller and the wallpaper when rolling.
- Use a soft brush and avoid hard tools like metal spatulas.
- If glue or dirt adheres to the surface of the wallcovering, wipe it off with a clean damp cloth, and then wipe it clean with a dry cloth. If any residue is left, it may cause discoloration.

M. Diatomaceous Earth, Juraku, Shell Powder Wallpaper

Feature : Wallpaper which is using natural diatomaceous earth and ore.

Important guidelines on selection

- Due to the use of natural materials, color differences may occur at the joints.
- Due to the manufacturing process, particles may fall off.

Important guidelines on installation

- The recommended adhesives are BB-378 and BB-304.
- After gluing, fold it loosely to avoid creases and please avoid stacking.
- The recommended open time is at least 15 minutes, but it varies with temperature and humidity. Adjust accordingly to site conditions. Excessive open time may cause drying, leading to joint gaps, misalignment, or difficulty in adjustment, which can affect installation quality.
- When allowing open time, avoid storing wallpaper in protective bags as this can create a high-temperature and high-humidity environment, potentially causing the surface material of the wallpaper to detach.
- Always use a cutter with a sharp edge, and install with underlayment tape (BB-471) to avoid cutting into the surface of the substrate board.
- Do not allow the glue to adhere to the surface of the wallpaper, as this may cause discoloration and missing particles on the surface.
- Please handle with care after gluing, as the material on the surface of the wallpaper may come off.
- Use a soft brush and avoid hard tools like metal spatulas.
- Do not wipe with damp cloth nor detergent as it may cause stains.
- If glue adheres to the surface of the wallpaper, wipe it off quickly by dabbing with a clean, dry cloth.

Important guidelines on selection and installation

N. Cork Wallpaper

Feature : Imported wallpaper made with natural cork.

Important guidelines on selection

- Due to the natural material, the colors and textures of the product may vary. Please also note that the joints may not align perfectly.

Important guidelines on installation

- The recommended adhesives are BB-378 and BB-304.
- After gluing, Do not fold it; instead, roll it up for storage. Please note that the cork may crack if it is piled up and a strong load is applied.
- The recommended open time is at least 10 minutes, but it varies with temperature and humidity. Adjust accordingly to site conditions. Excessive open time may cause drying, leading to joint gaps, misalignment, or difficulty in adjustment, which can affect installation quality.
- When allowing open time, avoid storing wallpaper in protective bags as this can create a high-temperature and high-humidity environment, potentially causing the surface material of the wallpaper to detach.
- Always use a cutter with a sharp edge, and install with underlayment tape (BB-471) to avoid cutting into the surface of the substrate board.
- Use the reinforcing adhesive 300 Clean (BB-451) and carefully crimp the corners.
- If sweat or glue adhere on the surface of the wallpaper, wipe it off with a damp cloth.

O. Wallpaper Other miraslate™

Feature : Wall sheet that faithfully reproduces the texture of natural stone.

Important guidelines on selection

- This product is for vertical wall use only. It cannot be applied to ceiling.
- Each tile has a different color and texture. Kindly understand that joints will not match.
- Physical impact may cause damage. The four corners are particularly prone to chipping, so handle with care.

Important guidelines on installation

- We recommend laying out the pieces and checking the overall balance of colors and patterns before installation.
- The recommended adhesive is BB-304.
- Apply the adhesive evenly, and be careful not to create any puddles. We recommend applying the adhesive by hand.
- Tiles can be cut with a cutter. In principle, when cutting, insert the blade from the tile surface side. After cutting to about 2/3 of the depth, you can break the tile by bending along the cut line.
- Use a urethane roller to firmly crimp the tile. Do not straddle the joint. Do not use metal rollers as they may damage the tile surface.
- If adhesive adheres to the tile surface, wipe it off with a damp microfiber cloth, and then thoroughly wipe away any moisture with a dry microfiber cloth.

Important Notes on Wallpaper Material Characteristics

1. Regarding Seams and Potential Peeling Issues

Since wallpaper is applied by joining sheets with an effective width on base materials such as gypsum board, seams are inevitable. Please note that depending on the wallpaper's specifications, design, and usage conditions, these seams may be visible. Additionally, over time, gaps may form due to the wallpaper expanding and contracting or beginning to peel.

2. Notes on Possible Discoloration

The wallpaper itself does not discolor on its own due to external factors. However, depending on the installation and usage environment, fading from ultraviolet rays or changes such as discoloration and staining may occur.

3. Notes on Surface Durability

Please note that scratches or tears may result from impact, abrasion, or friction.

4. Notes on Potential Cracks

Cracks may appear on the surface of the wallpaper due to vibrations from the building or its underlying structure. This is especially common at joints between different base materials or at seams in the substrate where there is no structural support, as these areas are more susceptible to movement. Please note that wallpaper alone cannot prevent cracking caused by such vibrations.

5. Color Appearance Notice

Please note that slight color differences may exist between the actual product and the samples or photographs shown in the sample book. Colors may also appear differently depending on the light source and usage environment (a phenomenon known as metamerism). Additionally, minor color variations may occur between different production lots.

Notes on Installation (General Information)

1. Substrate Preparation

[Smooth finishing of the substrate]

In order to prevent unevenness after installation, please finish the substrate smoothly. To avoid discoloration of screws and nails after installation, hammer in the protrusions completely and prevent rusting.

[Sealer application tailored to the substrate and conditions]

Direct application of wallpaper to wood-based, plywood, concrete, or mortar substrates may cause stains or discoloration on the wallpaper. Be sure to prepare the substrate with a dedicated sealer for each type. Applying a sealer prevents adhesion failures and discoloration, and also makes it easier to remove during renovations.

[Using putty of the same color as the substrate]

Use putty of the same color as the substrate. If you use putty of a different color from the substrate, the color of the putty may be visible after installation.

[Dry Substrate]

Wet substrates such as concrete or mortar, and areas where sealer or putty has been applied, should be sufficiently dry (moisture content of 11% or less) before starting installation. Insufficient drying may result in discoloration, peeling, or mildew on the wallcovering.

[Remove the backing paper remaining on the substrate surface]

When replacing wallcovering, if the backing paper of the previously applied wallcovering remains, remove the remaining backing paper completely before installation. If it is left in place, it may cause gaps and lifting.

2. Adhesive

[Preparation for installation site environment]

Please consider adjusting the adhesive mixture and open time according to the environment and temperature, or taking measures such as warming the room. Be sure to follow the precautions for the adhesive, especially in environments below 5°C, as this will result in weak adhesion and installation failure.

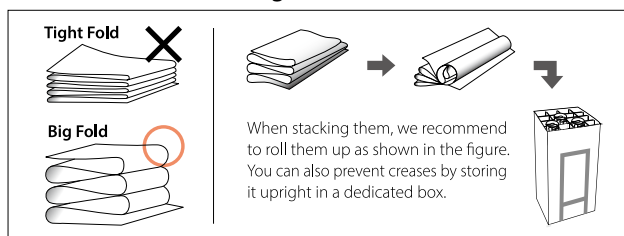
[Amount of Dilution/ Application]

Please adhere to the dilution ratio specified by the adhesive manufacturer. Apply the adhesive evenly, with a target application rate of 140-160g/sqm.

[Notes after gluing]

Please allow an appropriate open time after applying adhesive to the wallpaper. This will make installation easier and prevent blisters and gaps. Also, avoid folding the wallpaper tightly and make sure that no load is applied to the curved parts. Folding creases may occur and may not return to their original state.

[How to Fold after Gluing]



3. Installation

[Check batch No. and Installation notes]

Please use products from the same batch when installing in the same space. If products from different lots are used, problems such as color differences may occur. Also, please be sure to check the installation precautions thoroughly before proceeding with the installation.

[Effective Width]

Be sure to use wallcovering with an effective width. The overlapping selvage is not included in the effective width. Using beyond the effective width may cause color differences between the joints.

[Precautions for Gypsum Board Substrate]

If you cut into the base paper of gypsum board with a cutter, it may cause gaps in the seams. Please use the underlay tape when cutting. Also, avoid jointing wallpapers near the board seams as it can affect the finish.

[Precautions for Veneer Substrate]

When installing by overlap-cutting on a wood substrate such as veneer, scratching the sealer-applied surface with a cutter may cause discoloration due to exudation of scum. When cutting, we recommend using underlay tape or butt joint installation.

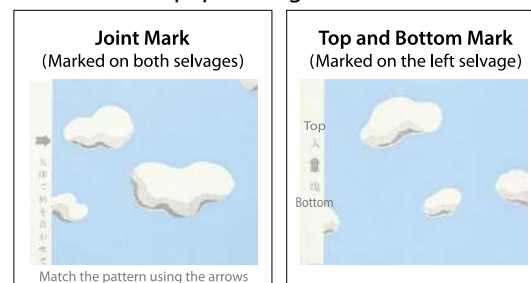
[Pattern Matching]

For products that require pattern matching, "Repeat" is noted in the catalog. The repeat value is a theoretical value and may lead to slight mismatches. At the time of installation, please refer to the joint mark and visually align the patterns to cut by overlapping.

[Joint Position]

Please join the wallpaper at the edges. Joining the edge to the center can result in color differences. Also, ensure the top and bottom, as well as the left and right sides, are aligned and installed in the same direction. Pay particular attention when installing around openings or when using leftover material for patching or repairs; installing only a section horizontally can easily cause color variations.

[Marks on Wallpaper's Edge]



[Adhesive and Stain Removal]

Please take extra care to prevent adhesive or dirt from adhering to the wallpaper surface or moldings. If any adheres, immediately wipe it off with a cloth moistened with clean water, and then wipe it dry. Leaving adhesive or dirt on the surface can cause mold or discoloration.

[Initial Installation Check]

While we maintain the highest standards of quality, we ask that you inspect the wallpaper for any issues after installing the first three strips of wallpaper. Should you identify any clear defects, please stop installation immediately and contact your distributor or sales representative. Please note that we cannot compensate for installation costs incurred after the first three strips.

4. Protection Measures

[Air Drying After Installation]

After installation, allow the adhesive to air dry until it sets. Rapid drying can cause peeling or curling.

[Protective Tape]

Please be aware that using strong adhesive tape can cause tearing, stains, and discoloration.

Maintenance for Wallpaper

1. General Notes

[Ventilation]

There may be residual odors from the installation, so please ventilate thoroughly for about a week after moving in.

[Protection from Direct Sunlight]

Discoloration may occur in places exposed to direct sunlight or hot air for extended periods. We recommend blocking the sunlight with a curtain or glass film. Also, be careful not to let the hot air from heaters, such as stoves, come into contact with the wallpaper directly.

[Cigarette Smoke and Kitchen Oil Smoke]

Cigarette smoke and kitchen oil smoke will turn the wallpaper yellow in a short period of time, resulting in stubborn stains. Please keep the room ventilated.

[Chemicals and Cosmetics]

Keep away spray chemicals (insecticides, paints, cosmetics, etc.) from the wallpaper. Also, do not apply medicines such as topical medications or lipstick. Depending on the type of chemicals, the adhered color may not come off or the wallcovering may discolor.

[Maintain a Gap Between Furniture and the Wall]

Wallpapers may be discolored by pigments in furniture paints and veneers. Allow some space between the furniture and the wallpaper. This not only prevents discoloration but also helps avoid condensation and mold growth.

[Avoid direct contact between rubber products and the wall]

Do not attach rubber products directly to wall surfaces or use tapes containing rubber-based adhesives. A chemical reaction may occur between the plasticizers in vinyl chloride wallcoverings and the antioxidants in rubber products, potentially resulting in discoloration or staining—commonly referred to as rubber migration.

[Do Not Stick Adhesive Tape]

Do not apply adhesive tape (such as cellophane tape or duct tape) to the wallpaper. The adhesive can transfer to the wallpaper, causing discoloration and stains. Rubber-based adhesives, in particular, are prone to causing discoloration, so please be cautious. Additionally, there is a risk of damaging the wallpaper when removing the adhesive tape.

2. Cleaning and Maintenance Guide

[Ordinary PVC Wallpaper]

Wipe off stains such as food, drink, or seasoning immediately with a firmly squeezed sponge or cloth. Use a mild detergent for difficult stains. Rinse any remaining detergent from the wallpaper with clean or lukewarm water.

*Avoid strong detergents or solvents like thinner, which can discolor or damage the surface.

[Washi/Japanese Wallpaper]

Do not wipe with water as it may cause stains. If dust adheres to the surface, use a brush to remove it.

[Diatomaceous Earth Wallpaper]

Do not wipe with water as it may cause stains. If dust adheres to the surface, use a brush to remove it. If the stain is noticeable, remove it by dabbing the stain with a tightly wrung cloth.

[Textile Wallpaper and Paper Weave Wallcovering]

Do not wipe with water as it may cause stains. If dust adheres to the surface, use a brush to remove it. If the stain is noticeable, remove it by dabbing the stain with a tightly wrung cloth.

3. Maintenance for Peeled-Off Wallpaper

If there is partial peeling, remove dust and dirt before the peeling spreads, and then carefully apply glue to the back of the wallcovering and press it down. It is difficult to repair items that have been peeled for a long time or that have deteriorated and become hard, so we recommend replacing them with new wallcovering.

4. Molds

Mold is not only an aesthetic issue but can also pose health risks, such as allergies and asthma, so caution is necessary. While some wallpapers have anti-mold properties, wallpaper alone cannot prevent mold growth.

[Prevent Mold]

Molds are greatly affected by the structure of the building and the living environment. Always ensure good ventilation and low humidity.

[If Mold Occurs]

If mold appears only on the surface of the wallpaper, it is effective to wipe it off with rubbing alcohol as soon as possible (the surface may get damaged depending on the type of wallpaper, so test before using it in an inconspicuous area). If you have a large amount of mold, we recommend that you consult a professional.

5. Dew Condensation

To prevent stains, peeling, and mold caused by condensation and high humidity, please maintain good indoor ventilation and humidity levels.

[Ventilation/Dehumidification]

Maintain consistent ventilation to expel water vapor from heating devices and other sources. Take extra care with steam produced in bathrooms and while cooking. Utilizing dehumidifiers and moisture absorbers is also effective.

[Improve Ventilation]

Please keep a space at the back of furniture to improve the air flow throughout the building.

[Dew Condensation in Winter]

Winter is a time when condensation easily occurs due to the large temperature difference between indoor and outdoor air. It tends to occur especially after using a humidifier. Please try to ventilate and dehumidify frequently.

6. Others

We recommend to replace the wallpaper for 5-10 years depending on the usage, while performing some maintenance on a daily basis.

Handling and Delivery Cautions

1. Receipt of Goods

When you receive the product, please check the item number, lot, and quantity on the delivery note. If you receive a product with a different item number or quantity than you ordered, please contact your distributor or our sales representative.

2. Checking Installation Guidelines

Please ensure that you understand the product characteristics and installation precautions before proceeding with the installation. Installation precautions are indicated on the shipping label of the product. (Japanese Only)

3. Handling and Storage

[At Delivery]

Since the product is a heavy item, ensure sufficient safety when handling and avoid unreasonable transportation. Improper handling may cause an accident or injury.

[Stored Upright]

Products must be stored upright. Avoid horizontal stacking or cross-stacking, as these can easily cause marks, gloss differences, and emboss crushing.

[Do Not Drop From Height]

Do not toss or drop the product from any height or angle, as you could damage the material, cause an accident or potentially injure yourself.

[Precautions for Storage]

Avoid storing the product in a place exposed to fire, water, humidity, or direct sunlight. Also, please do not store the product directly on the ground.

Precautions for Wallpaper Waste Disposal

1. Do not incinerate wallpaper waste

Do not incinerate wallpaper waste or a catalog.
Hazardous substances harmful to the human body may be released.

2. Industrial waste disposal

When disposing the waste of wallpaper as industrial waste, entrust it to an appropriately qualified industrial waste disposal operator.

3. General waste disposal

When treating a small amount of wallpaper as general waste (household waste), dispose of it in accordance with the municipal regulations.

sangetsu

SUSTAINABLE DEVELOPMENT GOALS

Sangetsu supports the Sustainable Development Goals (SDGs).



The Sustainable Development Goals (SDGs) are a set of international objectives established by the United Nations to achieve a sustainable world by 2030.

■ Our Specific Initiatives



Decent Work and Economic Growth

By planning and selling products that incorporate traditional Japanese materials such as washi paper, foil, and textiles, we help promote local goods and revitalize industries by preserving traditional craftsmanship.



Responsible Consumption and Production

We incorporate recycled materials into our manufacturing processes to help prevent and reduce waste generation. Examples include washi paper created from joined offcuts, textile wallcoverings made with recycled yarn, and wallpapers that utilize scallop shells. In addition, we promote waste reduction by offering recyclable products and sample books.



Sustainable Cities and Communities


We offer a wide range of products with diverse options in price, design, and functionality, contributing to community development through interior design. Additionally, we support sustainable urban development by designing sample book layouts that facilitate waste separation and by establishing dedicated recycling centers for sample books.



Life on Land

We offer sustainable, eco-friendly products like woven wallpaper made from recycled yarn.

Indication Symbols



Actual Product Sample

SGM0000 Sold by roll (3)

(4) Width 91.5cm ±62.5cm ↔ 91.5cm

(5) Antifungal / Deodorant / Humidity Control

(6) *The color and texture of each hand-processed handcraft washi paper are different.
For important guidelines on selection and installation, please refer to the pp.150-159.

SGM0000
(1)

NEW
(2)

(1) Display Symbol	Products are categorized with alphabetical notations on the product number. SGM0000 → TEXTURE & MATERIAL SGK000 → Ultrasuede®
(2) NEW	Depicts newly introduced products.
(3) Sales Unit	<div>Sold by roll</div> <div>Sold by sheet</div> <div>Depicts products are sold in roll sizes.</div> <div>Depicts products are sold in piece or sheet.</div>
(4) Width & Pattern Repeat	Displays the product width and pattern repeat.
(5) Functional Indicators	Displays the functionalities of the product. Water Repellent / Antifungal / Humidity Control / Water-repellent for textile / Deodorant / Surface Reinforcement
(6) Precautions	Precautions for product selection and installation.
(7) Others	<div>Order-Made Products</div> These products are produced after an order is received.

Regarding Disposal of Sample Books

We kindly request that any unused sample books be disposed of through a licensed industrial waste disposal contractor.



About the Sample Book

- The specifications of the products listed in this catalog are current as of its publication date (August 2025). Please note that they are subject to change without notice due to economic conditions or product improvements. Additionally, some products may be discontinued during the catalog's validity period due to unforeseen circumstances. We recommend confirming the latest information with your distributor or our sales office at the time of ordering.
- Please note that the actual product may differ slightly from the physical samples or the photos in the sample book. This TEXTURE & MATERIAL -XSELECT premium collection- sample book also includes items from the following collections:
 - 2023-2026 FLOOR TILE
 - 2023-2026 ROLL CARPET
 - 2023-2026 NT700
 - 2024-2028 STRINGS
 - 2023-2026 DT

Please note that each sample book has a different validity period, and the listed products are subject to change or discontinuation without prior notice. For up-to-date pricing and product details, please contact our sales office.

- Please note that the test data in the sample book are based on measurements and are not guaranteed.
- Reproducing or reprinting the products or photographs in this sample book without permission is strictly prohibited.

Release Date : August 2025
Issued by : Sangetsu Corporation

Valid Until : August 2029

*Please note that the validity period of this sample book is subject to change without prior notice due to unforeseen circumstances.

