

Texture & Color





Pure Black

A matte black finish achieved through a special manufacturing process that suppresses light reflection. This wallpaper absorbs reflected light from walls and ceilings, creating an enveloping sense of stillness and tranquility.



TH 34251 NEW



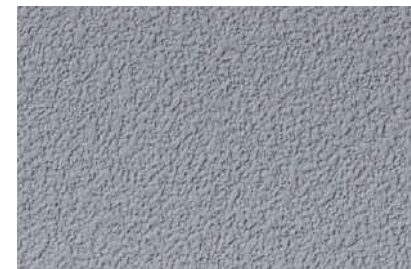
TH 34252 NEW



TH 34254 NEW



TH 34253 NEW



TH 34255 NEW

Width 92 cm

Anti-Mold

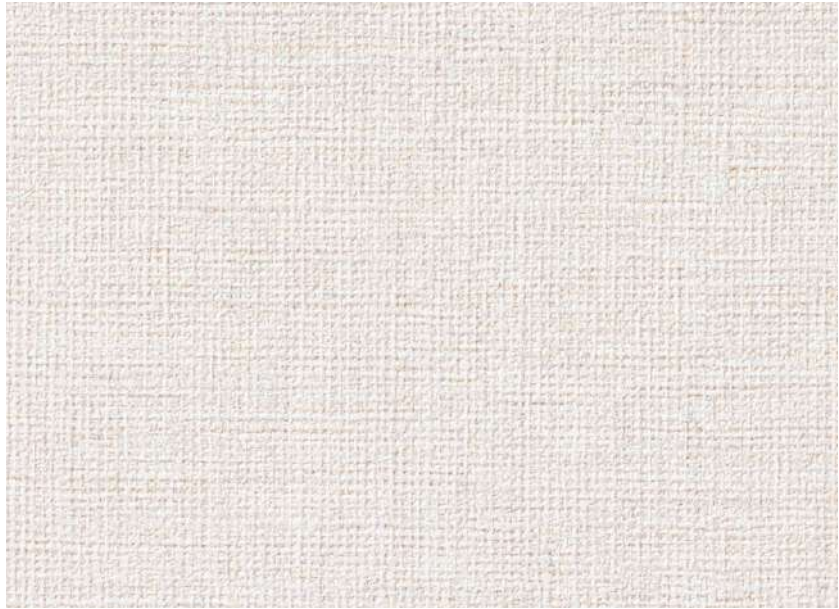
Notes: 02, 04, 05 Please be sure to check p. 272.

If adhesive adheres to the surface of the wallpaper, gently wipe it off with a tightly wrung sponge or cloth. For other notes, please refer to Notes 02, 04, and 05 on p. 272.

Designer

Izumi Okayasu

President of Izumi Okayasu Lighting Design Office. Izumi Okayasu provides comprehensive lighting design services, including lighting plans for architectural and commercial spaces, lighting fixture designs, and installations, both in Japan and overseas.



TH 34256 NEW



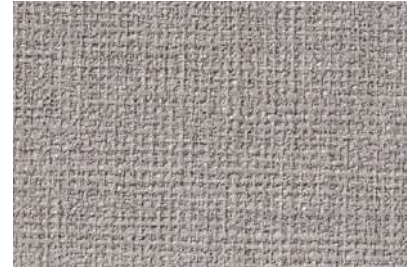
TH 34257 NEW



TH 34259 NEW

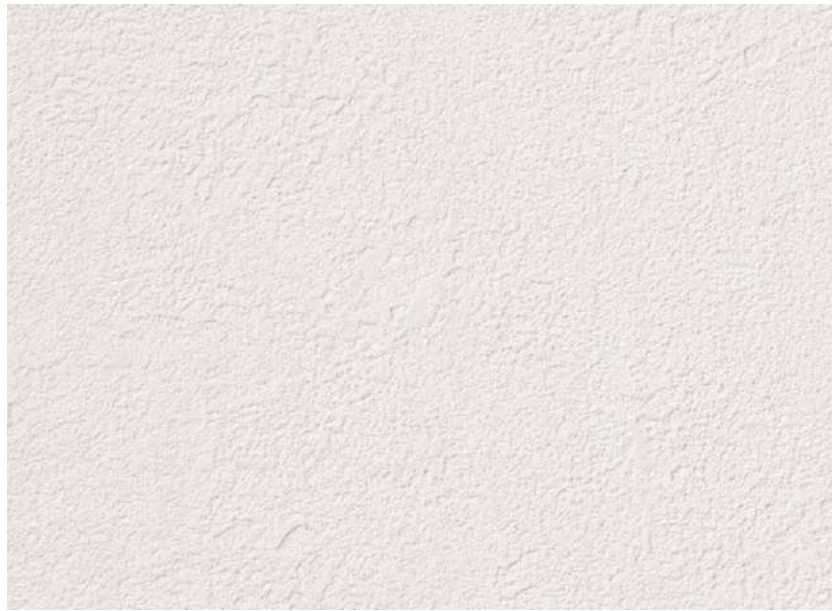


TH 34258 NEW



TH 34260 NEW

Width 92 cm
Anti-Mold | Anti-Bacterial | Water Repellent
Notes: 04, 05 Please be sure to check p. 272.



TH 34037(P.8)

Approximate JPMA color (code) 22-85B

[Easy Installation](#)



TH 34038(P.8)

Approximate JPMA color (code) 22-75B

[Easy Installation](#)



TH 34029(P.8) NEW

Approximate JPMA color (code) 25-60D

[Easy Installation](#)



TH 34039(P.8)

Approximate JPMA color (code) 19-65A

[Easy Installation](#)



TH 34028(P.8) NEW

Approximate JPMA color (code) 15-60D

[Easy Installation](#)

Width 92.5 cm ↓ 64 cm ↔ 46.3 cm (Emboss Repeat)

[Tough Stretch](#)

Anti-Mold | Anti-Bacterial | Anti-Scratch | Deodorant | Water Repellent | Stretch

Note: 04 Please be sure to check p. 272.

Note about Approximate JPMA color (code)

The Approximate JPMA color (code) is shown; however, this is only an approximate match and is not an identical color. The appearance of the color tone may vary depending on the texture of the wallpaper, such as its print, embossing, sheen, and so on.

Please check the actual color tone using the samples in the sample book or other physical samples before use. In addition, the color tone may appear different depending on the usage environment such as lighting conditions and viewing angles, or variations between manufacturing batches.

Products with item numbers shown in blue are also listed on other pages.



TH 34028

Texture & Color



TH 34261 NEW

[Easy Installation](#)



TH 34262 NEW



TH 34264 NEW

[Easy Installation](#)



TH 34263 NEW



TH 34265 NEW

[Easy Installation](#)

Width 92 cm

[Tough Stretch](#)

Anti-Mold | Anti-Bacterial | Anti-Scratch | Water Repellent | Stretch

Note: 05 Please be sure to check p. 272.



TH 34261 Flooring : IS-2101 (2023-2026 FLOOR TILE)



TH 34266 NEW



TH 34267 NEW



TH 34269 NEW

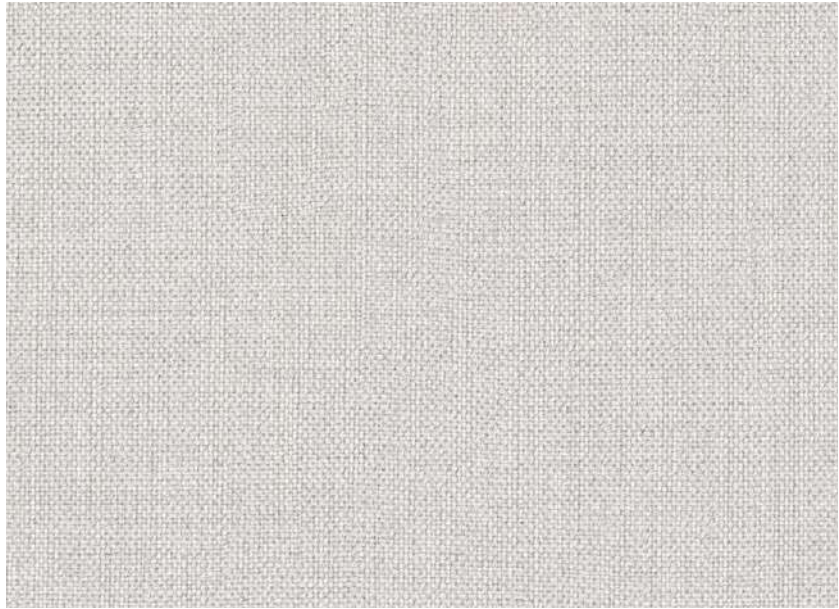


TH 34268 NEW

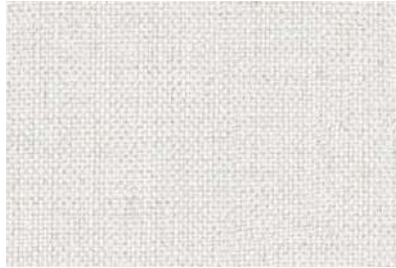


TH 34270 NEW

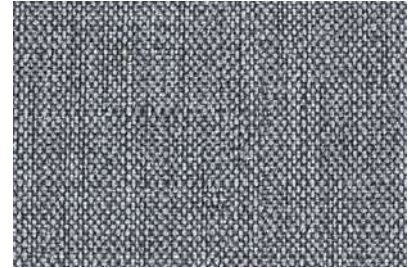
Width 92 cm ↓ 32 cm ↔ 46 cm
Anti-Mold



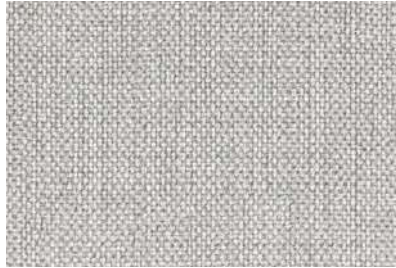
TH 34271



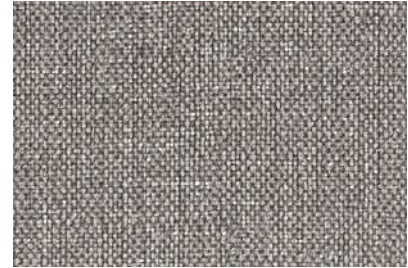
TH 34272



TH 34274



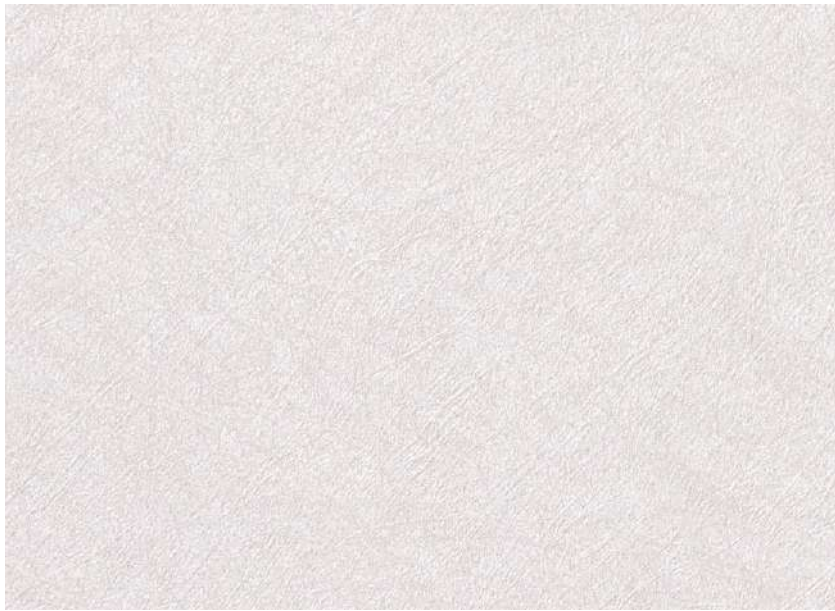
TH 34273



TH 34275

Width 92 cm
Anti-Mold | Anti-Bacterial | Anti-Scratch | Water Repellent

TH 34273



TH 34276 NEW



TH 34277 NEW



TH 34279 NEW



TH 34278 NEW



TH 34280 NEW

Width 92 cm

[Anti-Virus](#)

Anti-Mold | Anti-Bacterial | Anti-Virus

Notes: 04, 05 Please be sure to check p. 272.



Texture & Color



TH 34281



TH 34282



TH 34283

Width 92.5 cm ↓ 64.1 cm ↔ 92.5 cm

[Deodorant](#)

Anti-Mold | Anti-Bacterial | Anti-Scratch | Deodorant | Water Repellent

Notes: 04, 05 Please be sure to check p. 272.



TH 34284

[Easy Installation](#)



TH 34285

[Easy Installation](#)



TH 34286 NEW

[Easy Installation](#)

Width 92 cm

[Tough Stretch](#)

Anti-Mold | Anti-Bacterial | Anti-Scratch | Water Repellent | Stretch



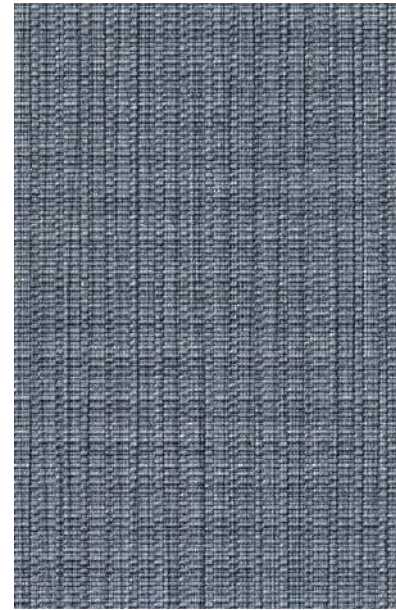
TH 34282



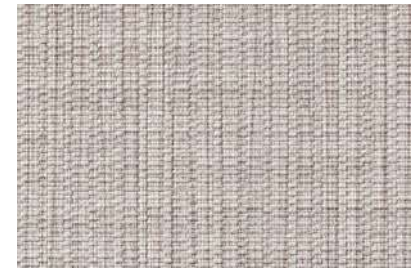
TH 34285



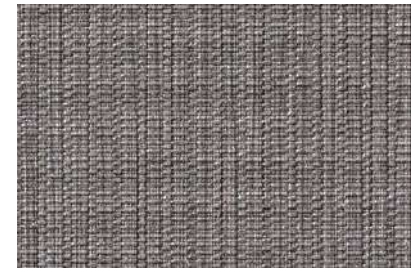
TH 34289



TH 34287 NEW



TH 34288 NEW

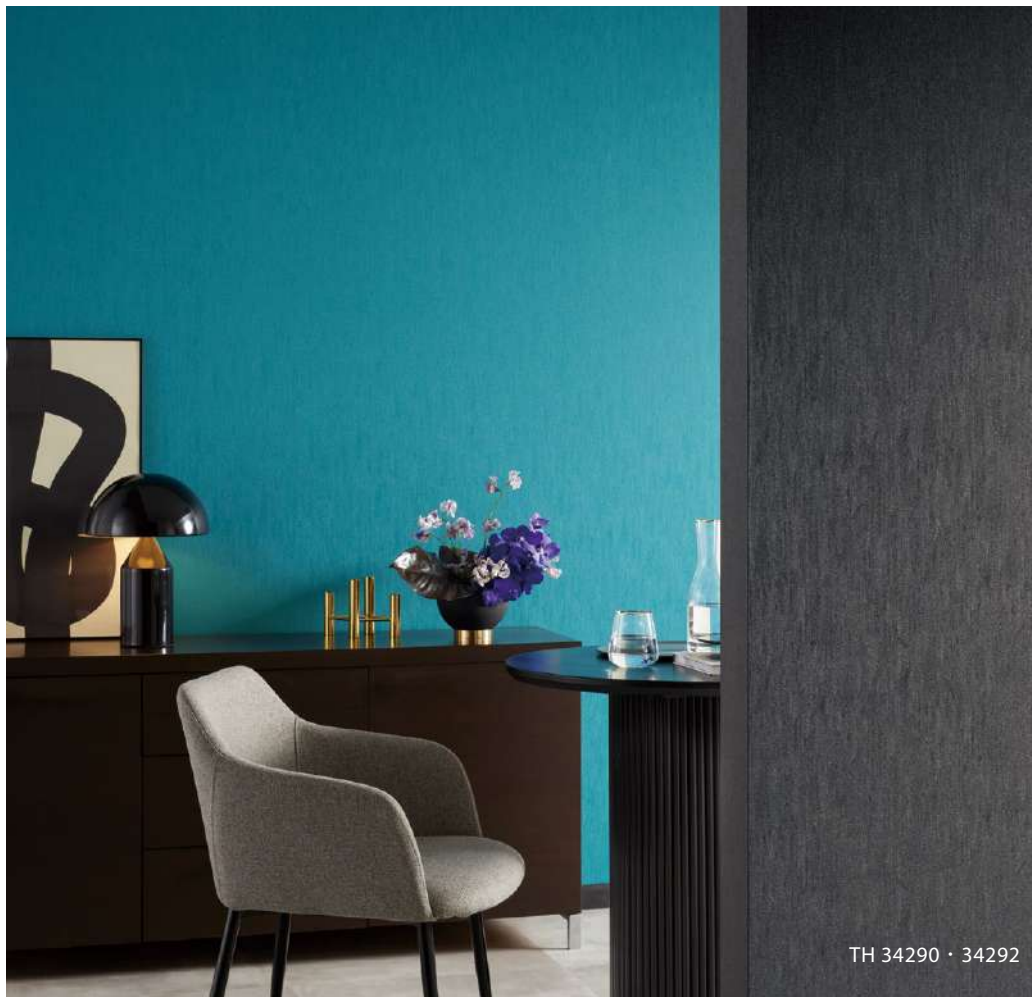


TH 34289 NEW

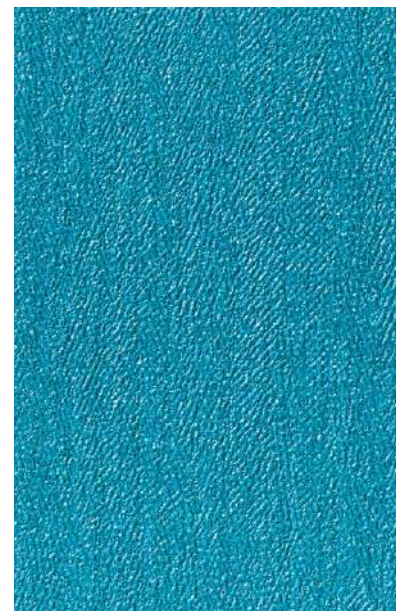
Width 92 cm

Anti-Mold

Notes: 02, 04 Please be sure to check p. 272.



TH 34290 · 34292



TH 34290 NEW



TH 34291 NEW



TH 34292 NEW

Width 92 cm

Anti-Mold

Note: 04 Please be sure to check p. 272.



EDA STRATFORD



TH 34293 NEW



TH 34294 NEW



TH 34296 NEW



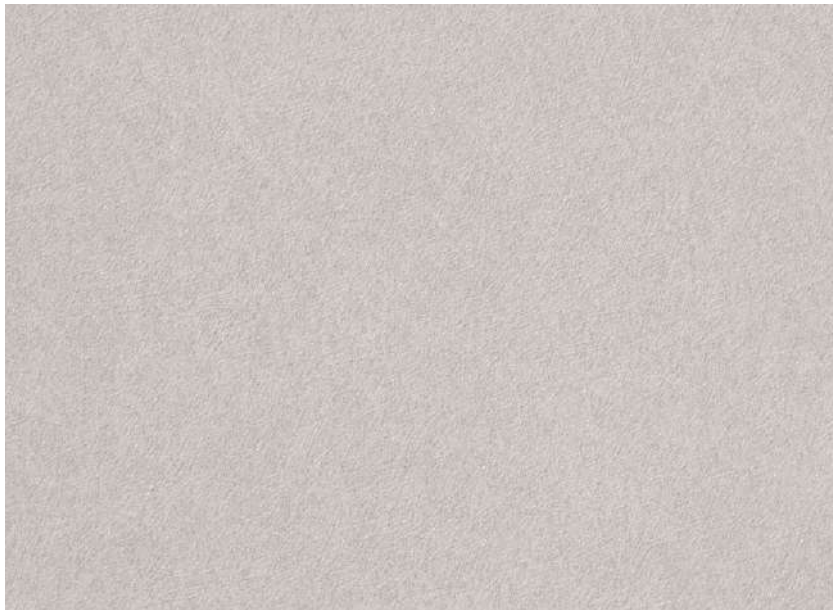
TH 34295 NEW



TH 34297 NEW

Width 92.5 cm ↓ 64.1 cm ↔ 92.5 cm
Anti-Mold

Notes: 04, 05 Please be sure to check p. 272.



TH 34298



TH 34299



TH 34301



TH 34300



TH 34302

Width 92 cm

Anti-Mold | Anti-Bacterial

Notes: 02, 05 Please be sure to check p. 272.

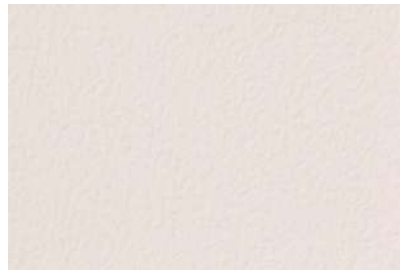


TH 34299

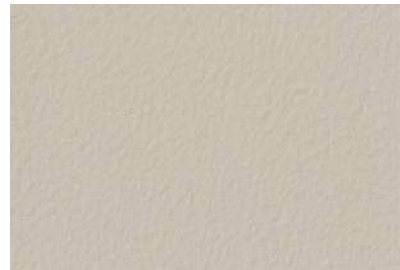
EDA STOUR



TH 34303



TH 34307



TH 34311



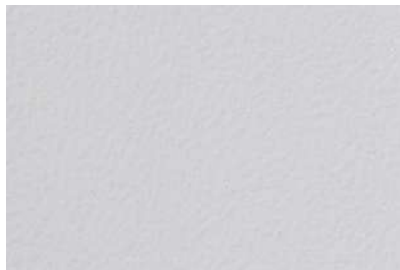
TH 34304



TH 34308



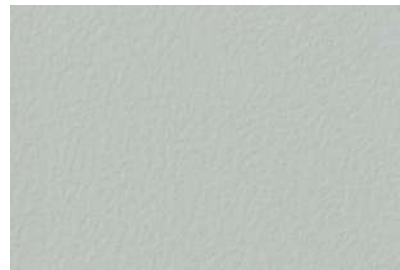
TH 34312



TH 34305



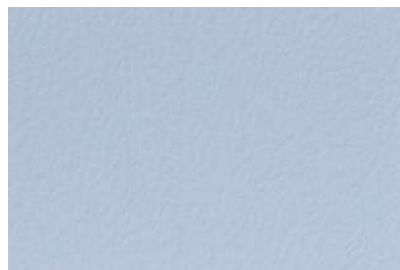
TH 34309



TH 34313



TH 34306



TH 34310



TH 34314

Width 92 cm

Anti-Mold | Anti-Bacterial | Anti-Scratch

Notes: 05, 06 Please be sure to check p. 272.



TH 34312







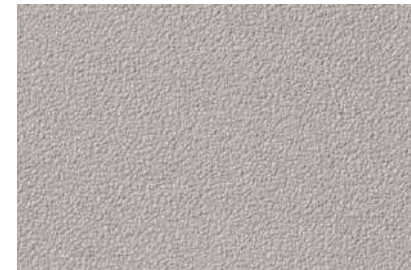
Blackboard Designed by SUPPOSE DESIGN OFFICE Co., Ltd.



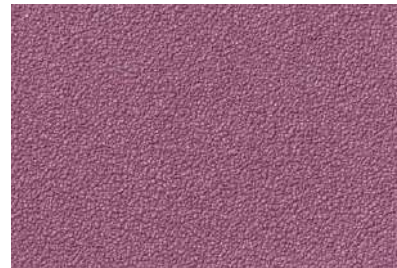
TH 34315 spring blossom



TH 34319 sea glass



TH 34323 clay



TH 34316 cactus flower



TH 34320 deep aqua



TH 34324 charcoal



TH 34317 brick red



TH 34321 study green



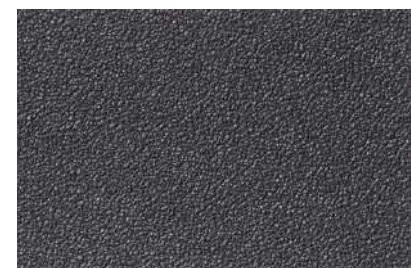
TH 34325 graphite



TH 34318 grasshopper



TH 34322 midnight



TH 34326 black

Width 92 cm

Super Durable

Anti-Mold | Anti-Bacterial | Anti-Scratch | Super Durable | Stain Prevention

Note: 07 Please be sure to check p. 272.

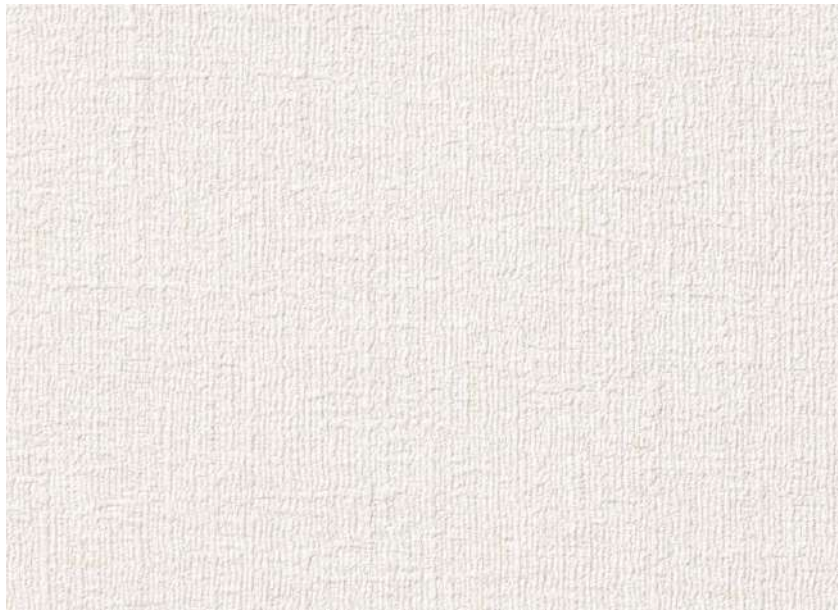
*Patented in Japan (Patent No. 6827705)



<Precautions for Installation and Handling>

- *Do not use anything other than chalk, as other materials may cause stains or scratches.
- *Do not apply excessive force when using chalk, as this may cause scratches or indentations.
- *Chalk dust may accumulate in the joints or in the recessed parts of the wallpaper surface.
- *To erase writing, first remove loose chalk dust with a dry brush or similar tool, then wipe the surface carefully with a damp microfiber cloth.
- *When wet-wiping, rinse the cloth frequently to keep it clean, and repeat the wiping several times.
- *For other notes, please refer to Note: 07 on p.272.

- *When wet-wiping joint areas, take care not to loosen or peel the wallpaper.
- *Please do not write on the wallpaper surface while moisture remains, as chalk dust may solidify and become impossible to remove.
- *Please note in advance that repeated writing and erasing may gradually leave residual marks, and the surface cannot be restored to its completely clean original condition.
- *Compared to general vinyl wallpaper, a more complex installation process will be required, which may result in increased installation costs.



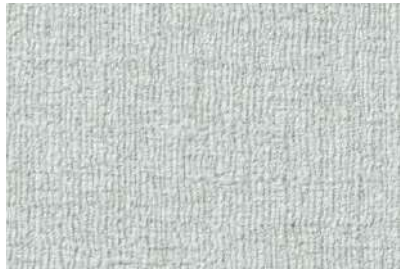
TH 34327

[Long-Term](#) [Easy Installation](#)



TH 34328

[Easy Installation](#)



TH 34330 NEW

[Easy Installation](#)



TH 34329

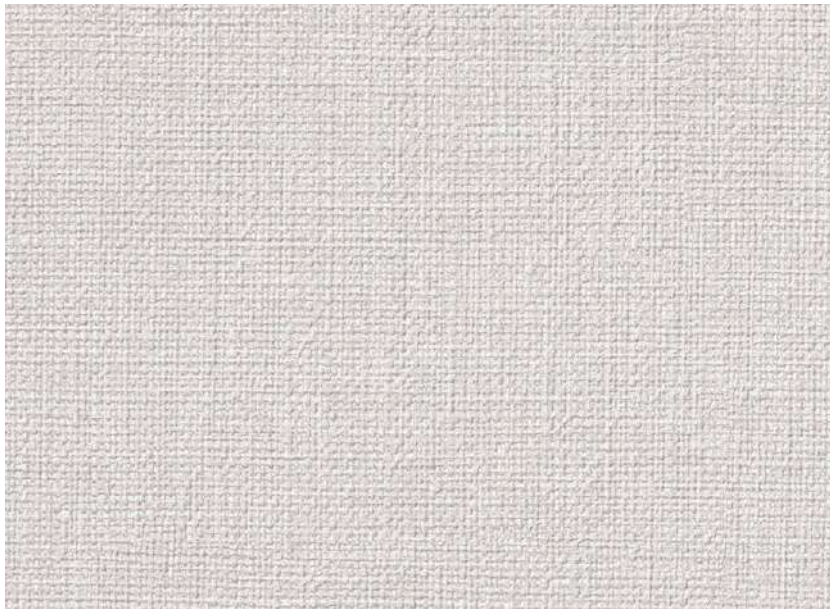
[Easy Installation](#)



TH 34331

[Easy Installation](#)

Width 92 cm
Anti-Mold | Anti-Scratch | Water Repellent



TH 34332

[Easy Installation](#)



TH 34333



TH 34336

[Easy Installation](#)



TH 34334

[Easy Installation](#)



TH 34337

[Easy Installation](#)



TH 34335

[Easy Installation](#)



TH 34338

[Easy Installation](#)

Width 92 cm
Anti-Mold | Anti-Scratch | Water Repellent





TH 34339



TH 34344



TH 34347



TH 34340

Same-Pattern REATEC TC-5181

Long-Term



TH 34342

Same-Pattern REATEC TC-4474



TH 34345



TH 34348 NEW



TH 34341

Same-Pattern REATEC TC-4473

Long-Term



TH 34343



TH 34346



TH 34349 NEW

Width 93 cm ⚡ 29.4 cm ↔ 46.5 cm (Emboss Repeat)

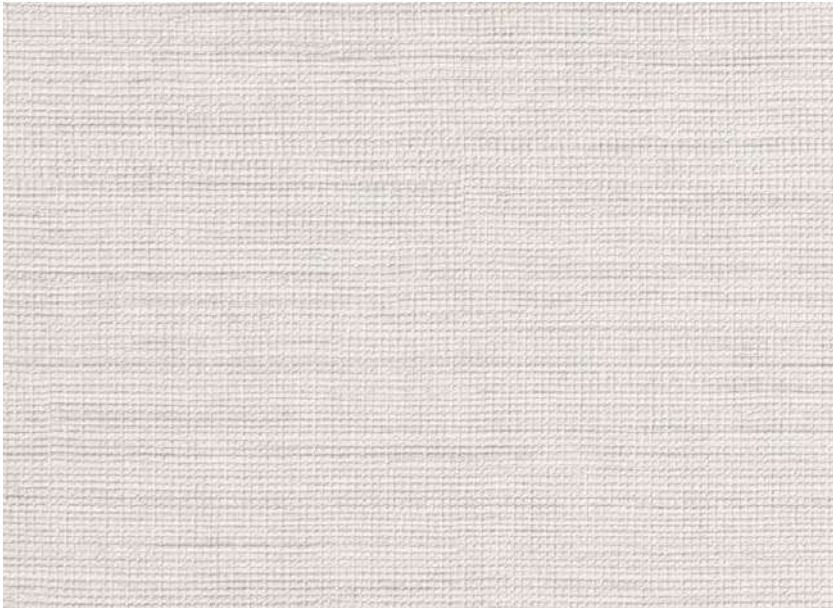
Deodorant

Anti-Mold | Anti-Bacterial | Deodorant

Notes: 02, 04, 11 Please be sure to check p. 272.



Texture & Color



TH 34350

Same-Pattern REATEC TN-5173



TH 34351

Same-Pattern REATEC TN-5172



TH 34354



TH 34352

Same-Pattern REATEC TN-5175



TH 34355



TH 34353



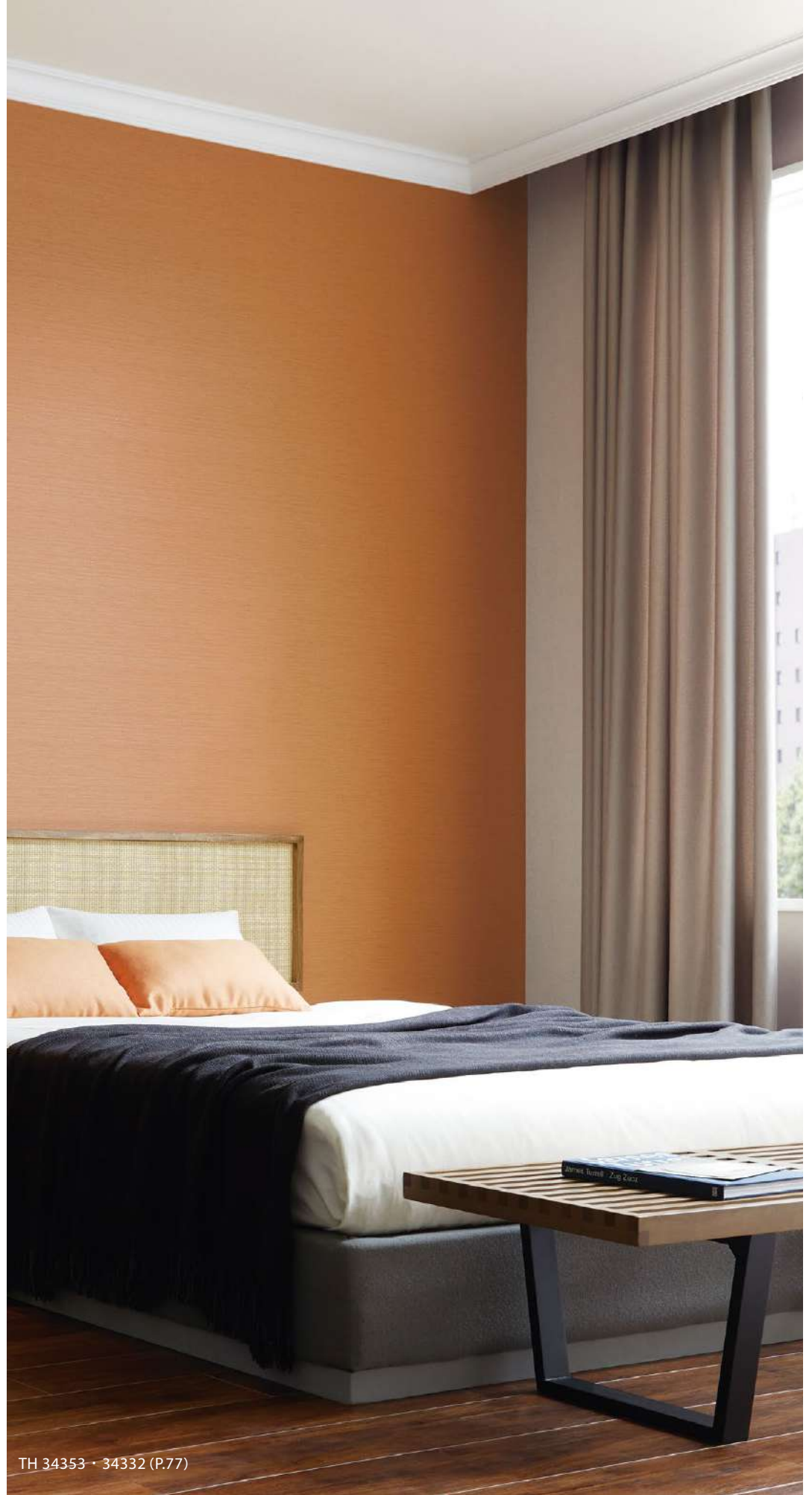
TH 34356

Same-Pattern REATEC TN-5177

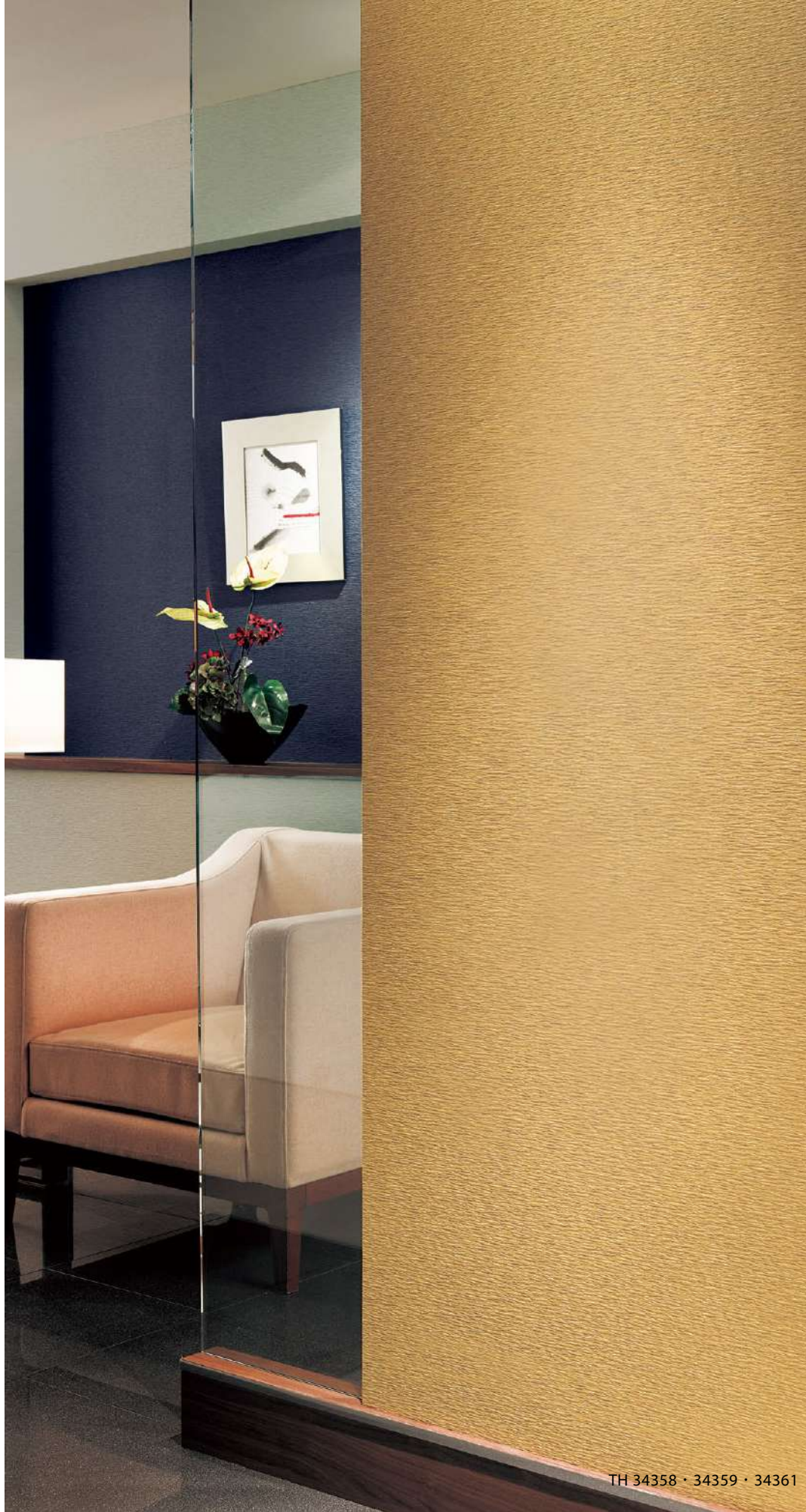
Width 92 cm ↓ 56.5 cm ↔ 92 cm

Anti-Mold | Anti-Bacterial

Notes: 04, 11 Please be sure to check p. 272.



TH 34353 • 34332 (P.77)



TH 34357



TH 34358



TH 34360



TH 34359



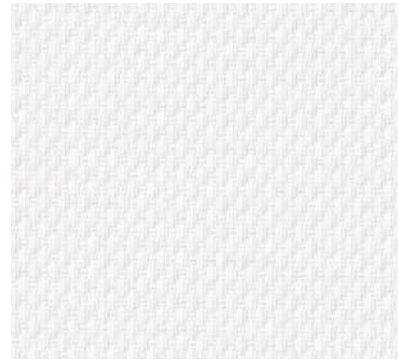
TH 34361

Width 92 cm ↓ 23.5 cm ↔ 46.2 cm (Emboss Repeat)

[Deodorant](#)

Anti-Mold | Anti-Bacterial | Deodorant

Note: 02 Please be sure to check p. 272.



TH 34362

Long-Term

TH 34363

Width 92 cm

Deodorant

Anti-Mold | Anti-Bacterial | Deodorant

Notes: 05, 06 Please be sure to check p. 272.



TH 34364

TH 34365

Width 92 cm

Anti-Mold | Anti-Bacterial



TH 34366

Long-Term

TH 34367

Long-Term

Width 92 cm

Anti-Mold



TH 34368

Long-Term



TH 34369

Width 92 cm

Deodorant

Anti-Mold | Anti-Bacterial | Deodorant



TH 34370



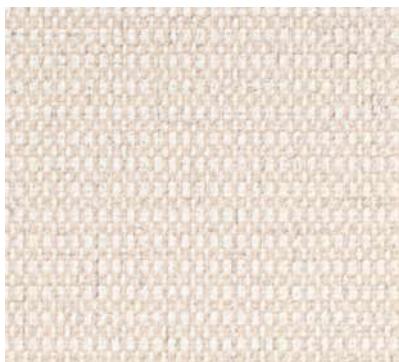
TH 34371

Width 92 cm

Deodorant

Anti-Mold | Anti-Bacterial | Deodorant

Note: 05 Please be sure to check p. 272.



TH 34372



TH 34373

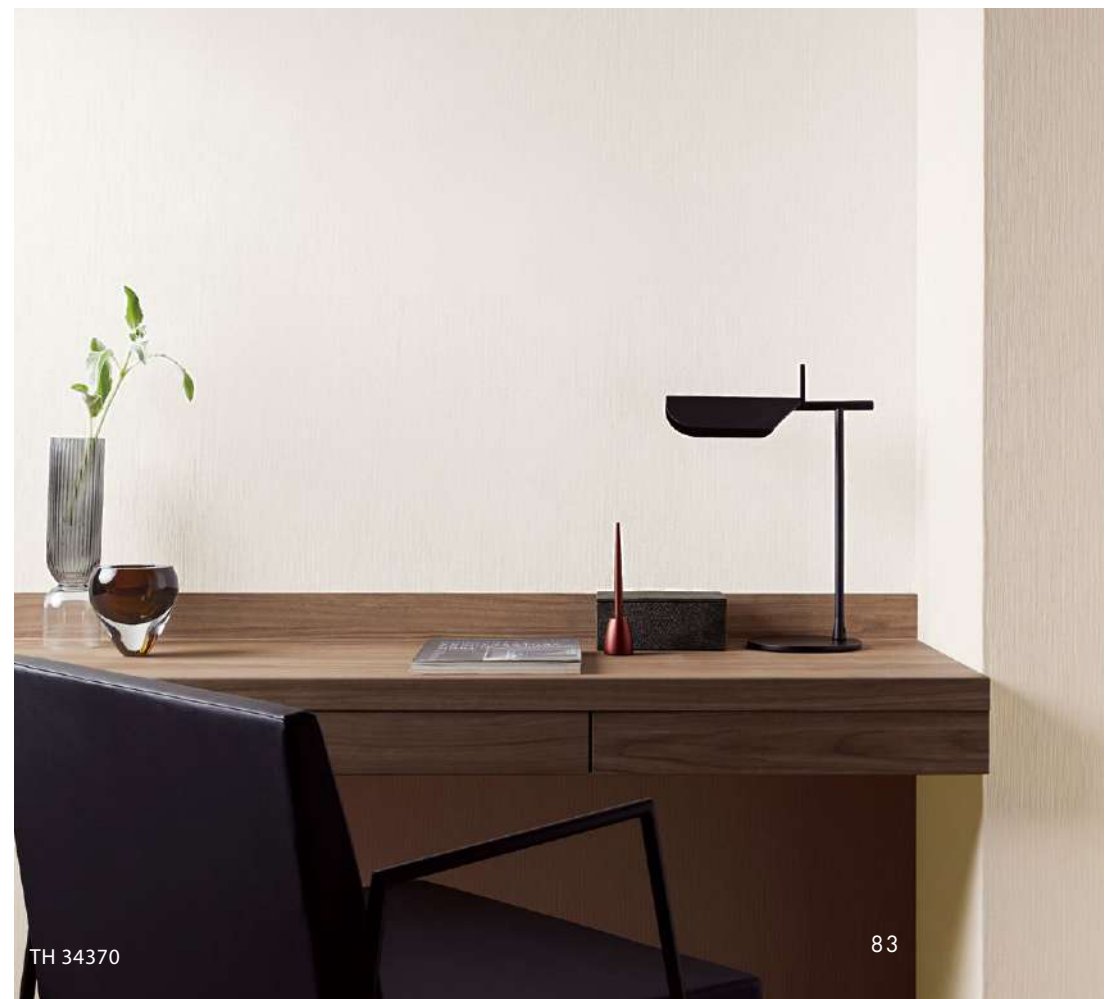
Width 92 cm ↓23 cm ↔46.2 cm

Deodorant

Anti-Mold | Anti-Bacterial | Anti-Scratch | Deodorant



TH 34368



TH 34370

Texture & Color



TH 34374



TH 34375

[Easy Installation](#)



TH 34376

[Easy Installation](#)

Width 92.5 cm ↑ 64 cm ↔ 92.5 cm (Emboss Repeat)

Anti-Mold | Anti-Bacterial | Water Repellent

Note: 05 Please be sure to check p. 272.



TH 34377



TH 34378



TH 34379

Width 92 cm

[Anti-Allergic](#)

Anti-Mold | Anti-Allergic

Note: 05 Please be sure to check p. 272.



TH 34376

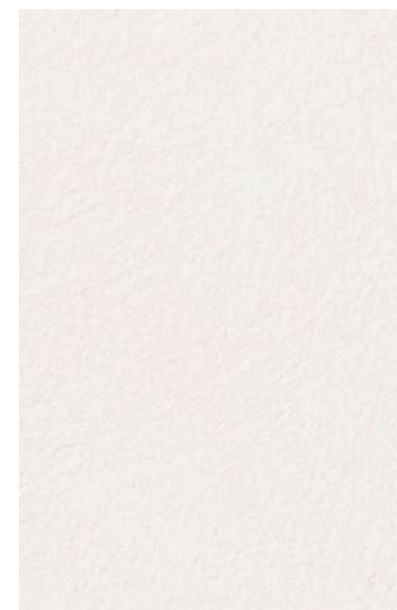


TH 34379

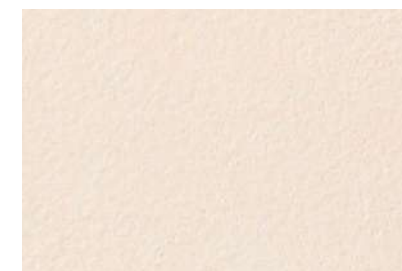


TH 34382

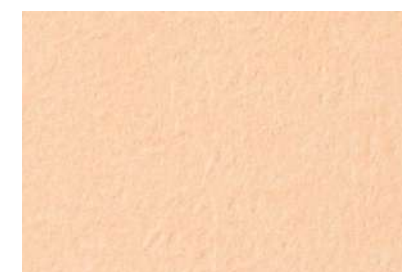
Texture & Color



TH 34380



TH 34381

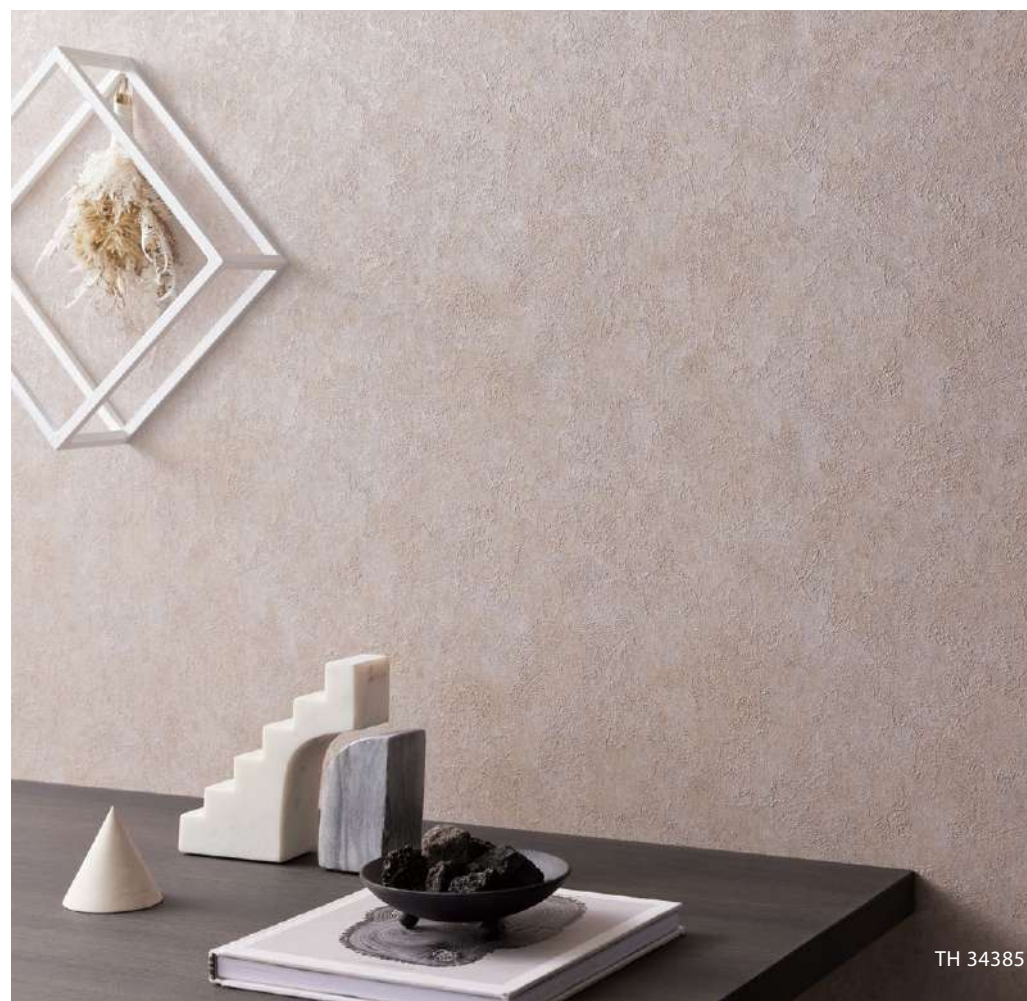


TH 34382

Width 92 cm ↑ 29.7 cm ↔ 46.2 cm (Emboss Repeat)

[Deodorant](#)

Anti-Mold | Anti-Bacterial | Anti-Scratch | Deodorant



TH 34385



TH 34383 NEW



TH 34384 NEW

[Easy Installation](#)



TH 34385 NEW

[Easy Installation](#)

Width 92 cm ↓ 32 cm ↔ 92 cm (Emboss Repeat)

[Urethane Coating](#)

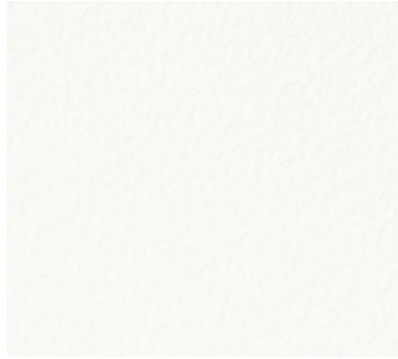
Anti-Mold | Anti-Bacterial | Anti-Scratch | Urethane Coating | Water Repellent

Notes: 01, 05 Please be sure to check p. 272.

Texture & Color



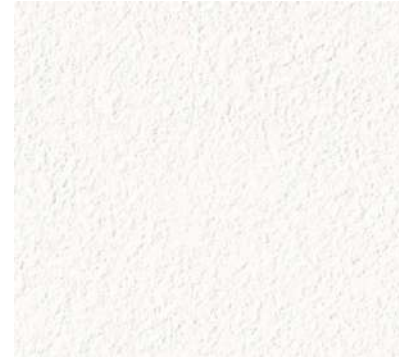
TH 34386



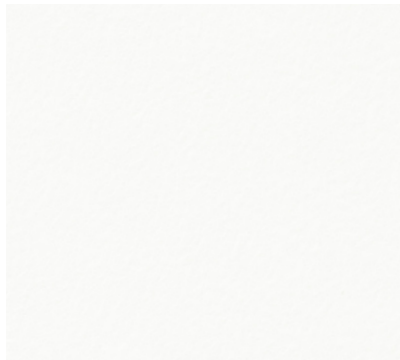
TH 34389 Approximate JPMA color (code) N-95



TH 34392 Approximate JPMA color (code) 25-90A



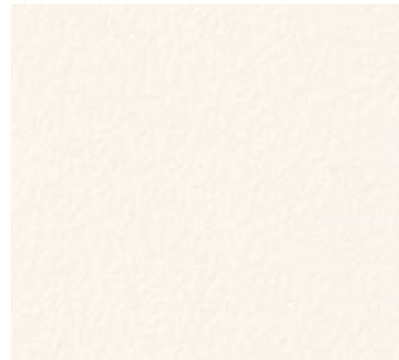
TH 34395 Long-Term



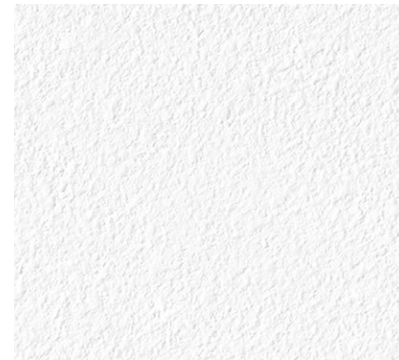
TH 34387



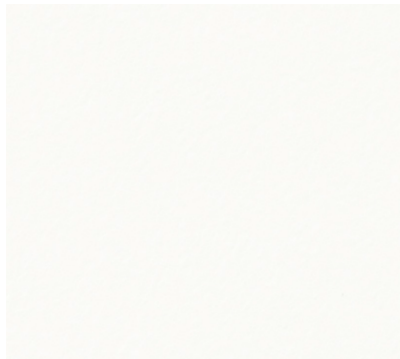
TH 34390 Approximate JPMA color (code) N-93



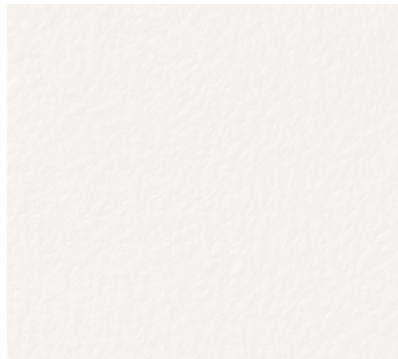
TH 34393 Approximate JPMA color (code) 25-92B



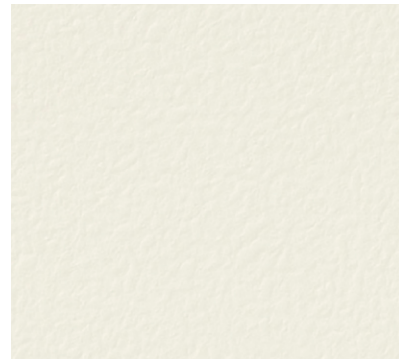
TH 34396



TH 34388



TH 34391 Approximate JPMA color (code) 19-90A



TH 34394 Approximate JPMA color (code) 25-90B

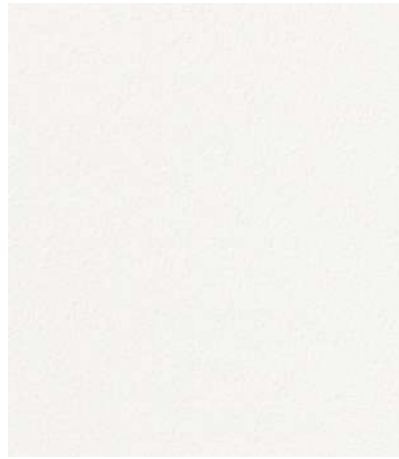
Width 92 cm
Deodorant
 Anti-Mold | Anti-Bacterial | Deodorant

Width 92 cm
 Anti-Mold | Anti-Bacterial | Anti-Scratch
 Notes: 05, 06 Please be sure to check p. 272.

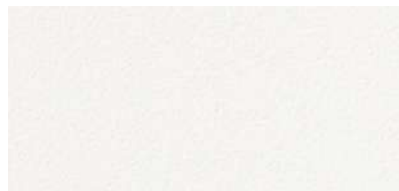
Width 92 cm
 Anti-Mold | Anti-Bacterial | Anti-Scratch | Water Repellent
 Note: 05 Please be sure to check p. 272.

Note about Approximate JPMA color (code)

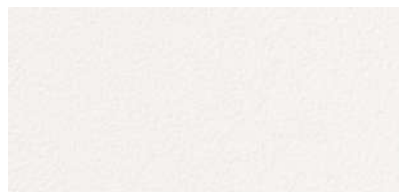
The Approximate JPMA color (code) is shown; however, this is only an approximate match and is not an identical color. The appearance of the color tone may vary depending on the texture of the wallpaper, such as its print, embossing, sheen, and so on. Please check the actual color tone using the samples in the sample book or other physical samples before use. In addition, the color tone may appear different depending on the usage environment such as lighting conditions and viewing angles, or variations between manufacturing batches.



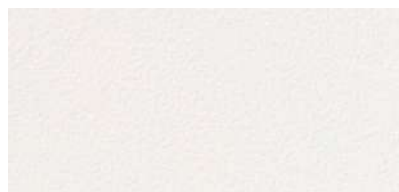
TH 34397 Long-Term For Projectors



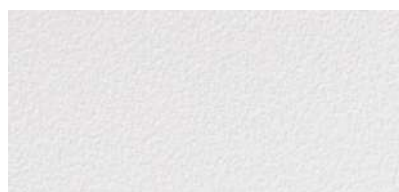
TH 34398 For Projectors



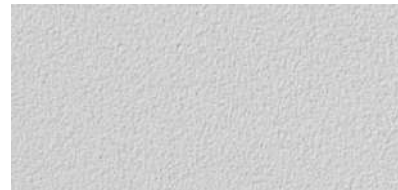
TH 34399 For Projectors



TH 34400



TH 34401



TH 34402



TH 34403



TH 34404



TH 34405



TH 34406



TH 34407



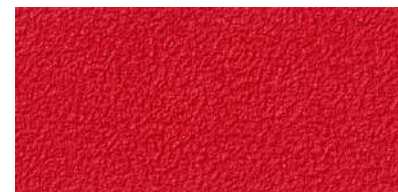
TH 34408
Same-Pattern REATEC TA-4757



TH 34409
Same-Pattern REATEC TA-4758



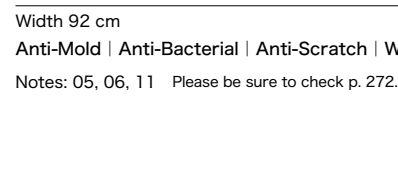
TH 34410



TH 34411
Same-Pattern REATEC TA-4791



TH 34412
Same-Pattern REATEC TA-4737



TH 34413
Same-Pattern REATEC TA-4765



TH 34414



TH 34415



TH 34416
Same-Pattern REATEC TA-4776



TH 34417
Same-Pattern REATEC TA-4752

Width 92 cm
Anti-Mold | Anti-Bacterial | Anti-Scratch | Water Repellent
Notes: 05, 06, 11 Please be sure to check p. 272.

Width 92 cm
Anti-Mold | Anti-Bacterial | Anti-Scratch
Notes: 04, 05, 06 Please be sure to check p. 272.

For Projectors Please refer to "Wallpaper for Projectors" on p. 262.

Easy Installation Wallpaper

1. Substantial and thick wallpaper

2. Texture that helps minimize the visibility of substrate unevenness

This product meets our in-house standards for thickness and concealment of substrate unevenness.

It can be used with confidence for projects and renovations where a high-quality finish is essential.



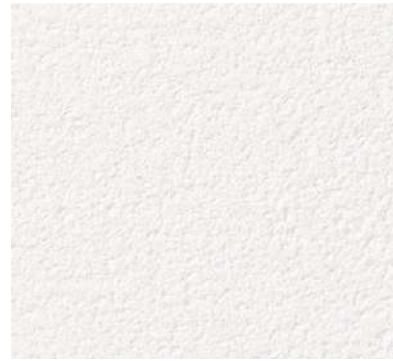
The wallpaper is installed over a substrate with tape applied to simulate unevenness

Easy installation wallpaper provides excellent concealment of substrate unevenness, minimizing its visibility.

*The appearance may vary depending on the viewing angle and environmental factors such as the lighting source and how the light hits the surface.

*The level of concealment of substrate unevenness differs depending on the product.

*The functional properties and test results described on this page are based solely on Japanese national standards or our own internal specifications, testing methods, and criteria.



TH 34024 (P.6) NEW
Approximate JPMA color (code) N-93

[Easy Installation](#)



TH 34037 (P.8)
Approximate JPMA color (code) 22-85B

[Easy Installation](#)



TH 34025 (P.6) NEW
Approximate JPMA color (code) N-90

[Easy Installation](#)



TH 34038 (P.8)
Approximate JPMA color (code) 22-75B

[Easy Installation](#)



TH 34026 (P.6) NEW
Approximate JPMA color (code) N-80

[Easy Installation](#)

Width 92 cm

[Anti-Virus](#)

Anti-Mold | Anti-Bacterial | Anti-Virus



TH 34039 (P.8)
Approximate JPMA color (code) 19-65A

[Easy Installation](#)

Width 92.5 cm ↓ 64 cm ↔ 46.3 cm

(Emboss Repeat)

[Tough Stretch](#)

Anti-Mold | Anti-Bacterial | Anti-Scratch
Deodorant | Water Repellent | Stretch

Note: 04 Please be sure to check p. 272.

Note about Approximate JPMA color (code)

The Approximate JPMA color (code) is shown; however, this is only an approximate match and is not an identical color. The appearance of the color tone may vary depending on the texture of the wallpaper, such as its print, embossing, sheen, and so on. Please check the actual color tone using the samples in the sample book or other physical samples before use. In addition, the color tone may appear different depending on the usage environment such as lighting conditions and viewing angles, or variations between manufacturing batches.

Products with item numbers shown in blue are also listed on other pages.



TH 34421

[Long-Term](#) [Easy Installation](#)



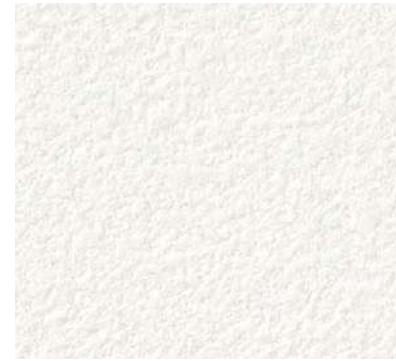
TH 34422

[Easy Installation](#)

Width 92 cm

[Deodorant](#)

Anti-Mold | Anti-Bacterial | Deodorant



TH 34423

[Easy Installation](#)



TH 34424

[Easy Installation](#)

Width 92 cm

[Tough Stretch](#)

Anti-Mold | Anti-Bacterial | Anti-Scratch | Water Repellent | Stretch



TH 34425

[Long-Term](#) [Easy Installation](#)



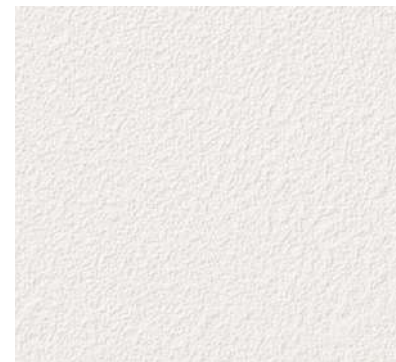
TH 34426

[Easy Installation](#)

Width 92.5 cm ↓30.7 cm ↔46.4 cm (Emboss Repeat)

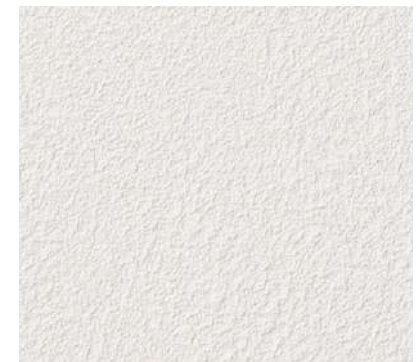
[Deodorant](#)

Anti-Mold | Anti-Bacterial | Anti-Scratch | Deodorant



TH 34375 (P.84)

[Easy Installation](#)



TH 34376 (P.84)

[Easy Installation](#)

Width 92.5 cm ↓64 cm ↔92.5 cm (Emboss Repeat)

Anti-Mold | Anti-Bacterial | Water Repellent



TH 34427

[Long-Term](#) [Easy Installation](#)



TH 34428

[Easy Installation](#)

Width 92 cm

Anti-Mold | Stretch



TH 34429

[Long-Term](#) [Easy Installation](#)

Width 92 cm

Anti-Mold | Anti-Scratch



TH 34430

[Long-Term](#) [Easy Installation](#)

Width 92 cm

[Deodorant](#)

Anti-Mold | Anti-Bacterial | Deodorant

Easy Installation Wallpaper



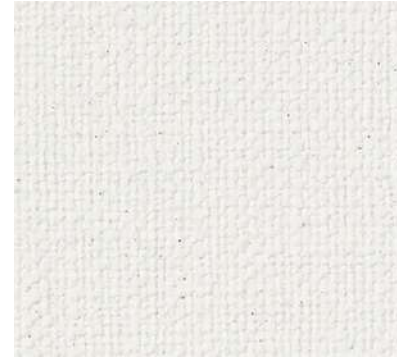
TH 34431

[Easy Installation](#)



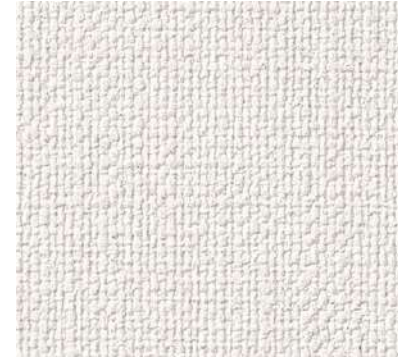
TH 34432 NEW

[Easy Installation](#)



TH 34433 NEW

[Easy Installation](#)



TH 34434

[Easy Installation](#)

Width 92 cm

[Tough Stretch](#)

Anti-Mold | Anti-Bacterial | Anti-Scratch | Water Repellent | Stretch

Width 92 cm

Anti-Mold | Anti-Bacterial



TH 34327 (P.76)

[Long-Term](#) [Easy Installation](#)



TH 34328 (P.76)

[Easy Installation](#)



TH 34435 NEW

[Easy Installation](#)



TH 34436 NEW

[Easy Installation](#)

Width 92 cm

Anti-Mold | Anti-Scratch | Water Repellent

Width 92 cm

Anti-Mold | Anti-Bacterial | Water Repellent



TH 34437 NEW

[Easy Installation](#)



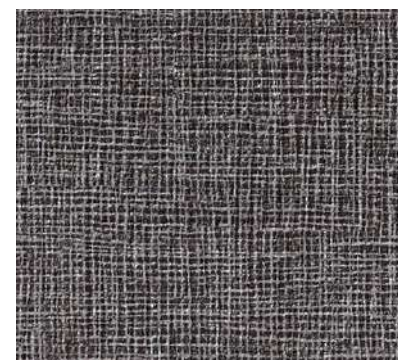
TH 34438 NEW

[Easy Installation](#)



TH 34439 NEW

[Easy Installation](#)



TH 34440 NEW

[Easy Installation](#)

Width 92 cm

[Tough Stretch](#)

Anti-Mold | Anti-Bacterial | Anti-Scratch | Water Repellent | Stretch

Note: 04 Please be sure to check p. 272.



TH 34441 [Easy Installation](#)

Width 92 cm
Anti-Mold | Anti-Bacterial | Water Repellent



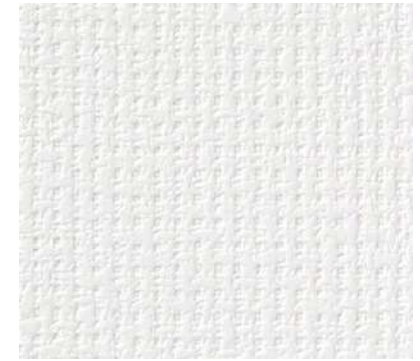
TH 34442 [Long-Term](#) [Easy Installation](#)

Width 92 cm
Anti-Mold | Stretch



TH 34443 [Long-Term](#) [Easy Installation](#)

Width 92 cm
[Urethane Coating](#)
Anti-Mold | Anti-Scratch | Urethane Coating



TH 34444 [Long-Term](#) [Easy Installation](#)

Width 92 cm
[Deodorant](#)
Anti-Mold | Anti-Bacterial | Deodorant



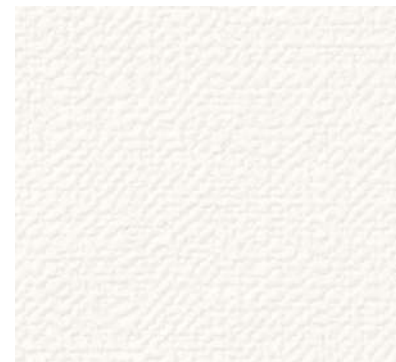
TH 34445 [Easy Installation](#)

Width 92 cm
[Deodorant](#)
Anti-Mold | Anti-Bacterial | Deodorant



TH 34446 [Long-Term](#) [Easy Installation](#)

Width 92 cm
Anti-Mold | Anti-Bacterial



TH 34447 [Long-Term](#) [Easy Installation](#)

Width 92 cm
Anti-Mold | Anti-Bacterial



TH 34448 [Easy Installation](#)

Width 92 cm ↑32.1 cm ↔46.2 cm
●Random Match
Anti-Mold | Anti-Bacterial



TH 34449 [Long-Term](#) [Easy Installation](#)

Width 92 cm
Anti-Mold



TH 34450 [Long-Term](#) [Easy Installation](#)

Width 92 cm
[Urethane Coating](#)
Anti-Mold | Anti-Scratch | Urethane Coating



TH 34451 [Long-Term](#) [Easy Installation](#)

Width 92 cm
[Deodorant](#)
Anti-Mold | Anti-Bacterial | Deodorant



TH 34452 [Long-Term](#) [Easy Installation](#)

Width 92 cm
Anti-Mold | Anti-Bacterial

Film Stain Prevention - Barrier Type

EVAL BARRIER CLOTH

1. Excellent Stain Resistance, Chemical Resistance, and Antibacterial Performance

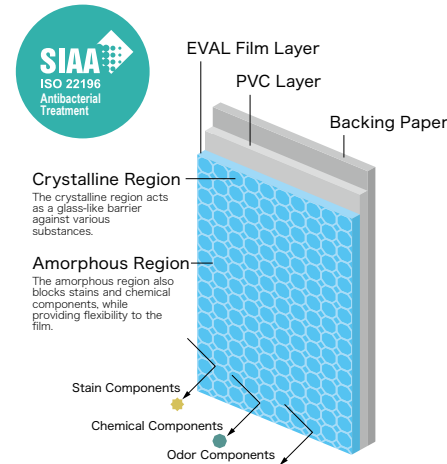
Stains can be easily wiped off with water or a neutral detergent. Its excellent chemical resistance and antibacterial properties make maintenance effortless and help keep the space hygienic.

2. Odor-Blocking Deodorizing Effect

The EVAL film on the surface acts as a barrier against odor components, helping to prevent odors from permeating the wallpaper and suppress their emission of smells.

3. Excellent Surface Strength and Scratch Resistance

The high-strength EVAL film effectively helps prevent surface scratches and peeling that can occur when objects bump against the wallpaper.



■ Stain Resistance Test Results

This test evaluates stain prevention performance 24 hours after exposure to various contaminants.

Contaminants	Film Stain Prevention - Barrier Type			General Vinyl Wallpaper		
	Water	Neutral Detergent	Alcohol	Water	Neutral Detergent	Alcohol
Coffee	◎	◎	◎	△	△	△
Soy Sauce	◎	◎	◎	×	△	△
Sauce	◎	◎	◎	××	×	×
Orange Juice	◎	◎	◎	○	◎	◎
Water-based Marker	○	◎	◎	×	×	×
Crayon	△	◎	◎	××	××	××
Oil-based Marker	××	×	◎	××	××	××
Lipstick	△	◎	◎	××	×	××

[Test Method]

Based on the Wallcoverings Association's "Stain Prevention Wallpaper Performance Test," and the contaminants determined according to our in-house standards.

[Evaluation Criteria]

The degree of staining is evaluated using the gray scale for assessing staining specified in JIS L 0805.

◎: Grade 5 — No residual stain ○: Grade 4 — Virtually no residual stain
 △: Grade 3 — Slight residual stain ×: Grade 2 — Significant residual stain
 ××: Grade 1 — Heavy residual stain

■ Antibacterial Performance Comparison Table

The product meets the specified performance requirement of [< 0.63].

	Bacterium A		Bacterium B		Bacterium C	
	Immediately after inoculation	After 24 hours	Immediately after inoculation	After 24 hours	Immediately after inoculation	After 24 hours
Film Stain Prevention - Barrier Type	1.2×10^4	< 0.63	1.1×10^4	< 0.63	1.2×10^4	< 0.63
Polyethylene Film	1.2×10^4	1.5×10^6	1.1×10^4	3.6×10^4	1.2×10^4	7.6×10^4

[Test Method]

Based on the Wallcoverings Association's "Anti-Bacterial Performance Test."

*The above test results are measured values and are not guaranteed values.

*Test results may vary depending on the color and pattern.

*The functional properties and test results described on this page are based solely on Japanese national standards or our own internal specifications, testing methods, and criteria.

We have not conducted any testing based on the standards, testing methods, or criteria of other countries or regions where the product may be sold or used.

■ Chemical Resistance Test Results

This test evaluates the chemical resistance performance 24 hours after exposure to various chemicals.

Chemical Names	Film Stain Prevention - Barrier Type	General Vinyl Wallpaper
Sodium Hypochlorite (6%)	◎	○
Anhydrous Ethanol (99.5 vol%)	◎	◎
Aqueous Ammonia (25%)	◎	◎
Hydrogen Peroxide Solution (3.5 w/v%)	◎	◎
Povidone-Iodine (7%)	△	×
Hydrochloric Acid (9.5%)	○	△
Benzalkonium Chloride Solution (10%)	○	△
Formalin Solution (37%)	◎	◎
Cresol Soap Solution (3%)	◎	◎
Thinner (Undiluted)	◎	○
Lugol's Solution (Undiluted)	○	×
Acrinol (Undiluted)	○	×
MEK (Undiluted)	◎	△

[Test Method]

Based on JIS K 6902B, and the contaminants determined according to our in-house standards.

[Evaluation Criteria]

Comprehensive evaluation based on change in color and physical conditions. Color Change: The degree of staining is evaluated using the gray scale for assessing staining specified in JIS L 0805.

Physical Change: Appearance changes are evaluated by visual inspection.

◎ ... No change ○ ... Slight change
 △ ... Change observed × ... Obvious change

■ Stain Removal Performance Comparison



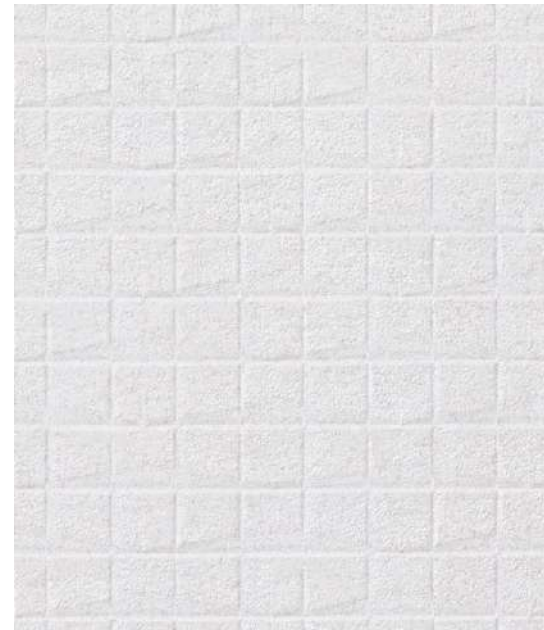
Film Stain Prevention - Barrier Type

General Vinyl Wallpaper

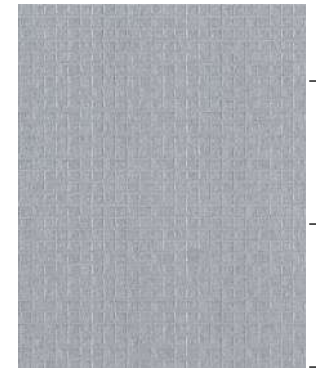
[Test Method]

Crayon marks applied to the wallpaper surface and then wiped off using ethanol.





TH 34461 NEW



TH 34462 (1 scale: 10 cm)



TH 34462 NEW



TH 34463 NEW

Width 92 cm ↓ 6.6 cm ↔ 6.6 cm (Emboss Repeat)

[Film Stain Prevention - Barrier Type](#)

Anti-Mold | Anti-Bacterial | Stain Prevention

Notes: 04,07 Please be sure to check p. 272.

Film Stain Prevention - Barrier Type



TH 34464 NEW



TH 34465 NEW



TH 34466 NEW

Width 92.5 cm ↓ 32.1 cm ↔ 92.5 cm (Emboss Repeat)

[Film Stain Prevention - Barrier Type](#)

Anti-Mold | Anti-Bacterial | Anti-Scratch | Stain Prevention

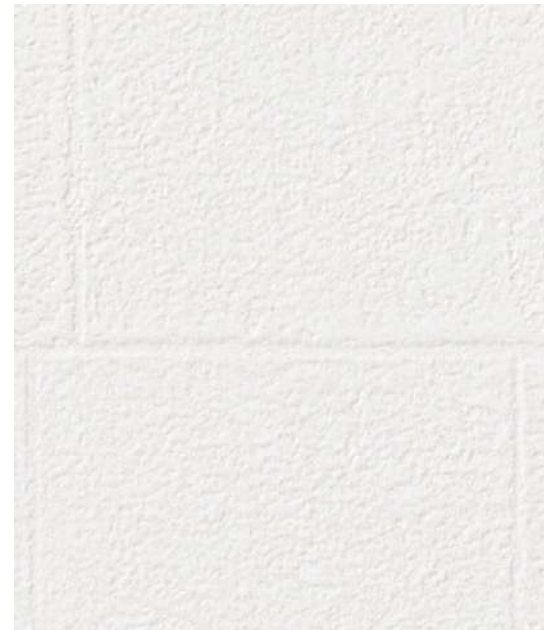
Notes : 05, 07 Please be sure to check p. 272.



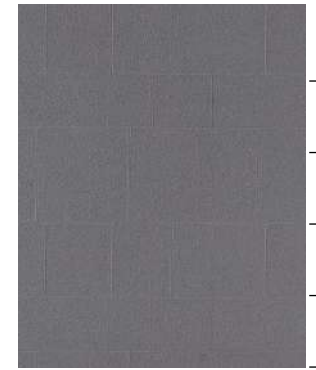
TH 34466(1 scale: 10 cm)



TH 34465 • 34193 (P.43)



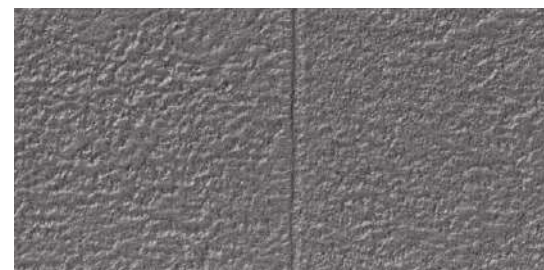
TH 34467 NEW



TH 34469 (1 scale: 10 cm)



TH 34468 NEW



TH 34469 NEW

Width 92 cm \updownarrow 31.4 cm \leftrightarrow 30.8 cm (Emboss Repeat)

[Film Stain Prevention - Barrier Type](#)

Anti-Mold | Anti-Bacterial | Stain Prevention

Notes: 02, 04, 05, 07 Please be sure to check p. 272.



TH 34472



TH 34470



TH 34471



TH 34472

Width 92.5 cm ↑ 32 cm ↔ 46.4 cm ● Random Match

[Film Stain Prevention - Barrier Type](#)

Anti-Mold | Anti-Bacterial | Anti-Scratch | Stain Prevention

Notes : 05, 07 Please be sure to check p. 272.



TH 34475



TH 34473



TH 34474



TH 34475

Width 92 cm ↓ 48.1 cm ↔ 92 cm

[Film Stain Prevention - Barrier Type](#)

Anti-Mold | Anti-Bacterial | Anti-Scratch | Stain Prevention

Note: 07 Please be sure to check p. 272.



TH 34476

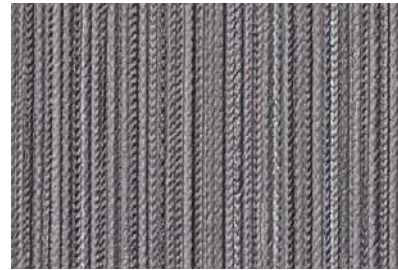
Same-Pattern REATEC TC-5179

Long-Term



TH 34477

Same-Pattern REATEC TC-5180



TH 34478

Width 92 cm ↔ 11.5 cm

Film Stain Prevention - Barrier Type

Anti-Mold | Anti-Bacterial | Anti-Scratch | Stain Prevention

Notes: 05, 07, 11 Please be sure to check p. 272.



TH 34479 NEW



TH 34480 NEW



TH 34481 NEW

Width 92 cm ↔ 92 cm

Film Stain Prevention - Barrier Type

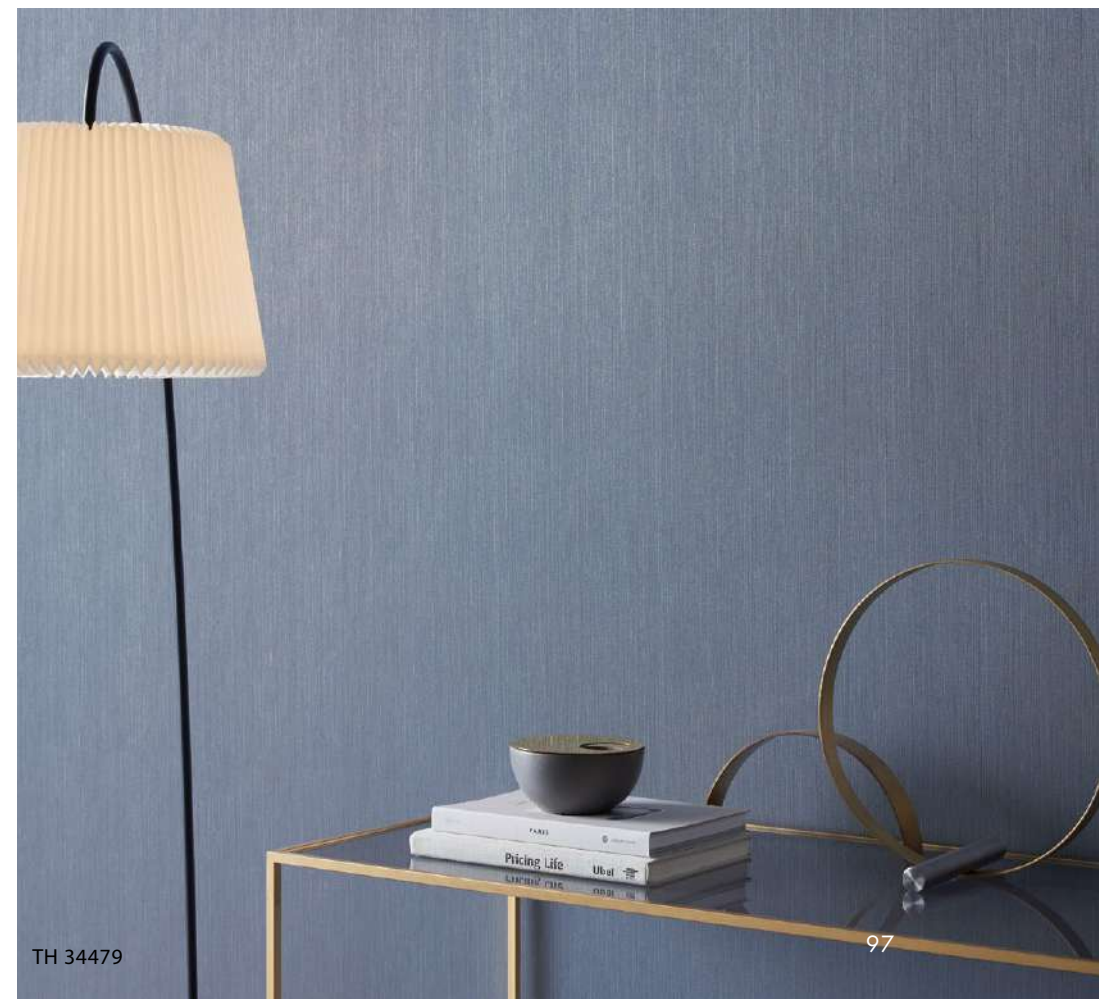
Anti-Mold | Anti-Bacterial | Stain Prevention

Notes: 04, 05, 07 Please be sure to check p. 272.



TH 34477

Film Stain Prevention - Barrier Type



TH 34479

3



4

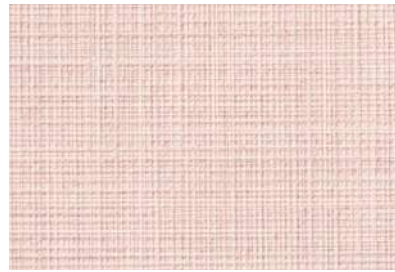


1

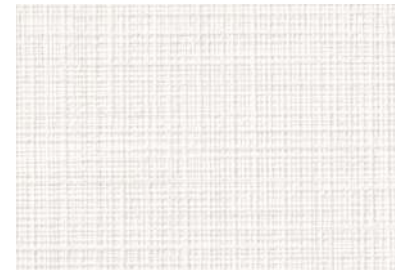


2



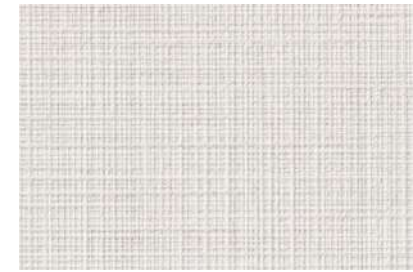


TH 34482

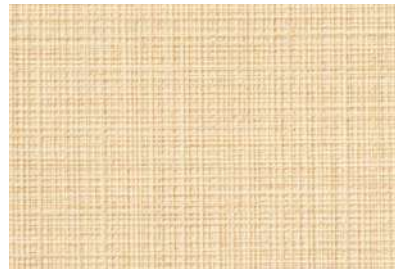


TH 34486

Long-Term



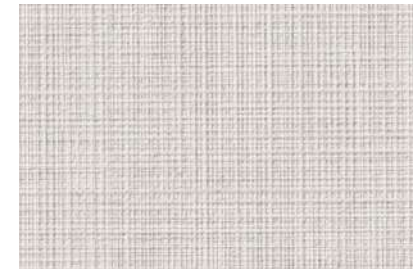
TH 34490



TH 34483



TH 34487



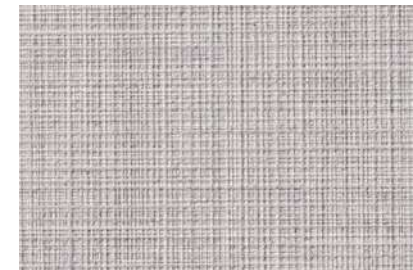
TH 34491



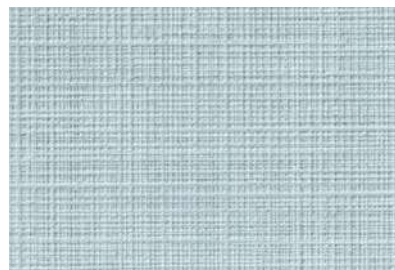
TH 34484



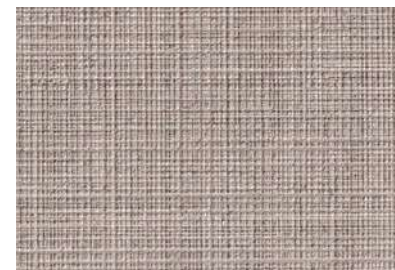
TH 34488



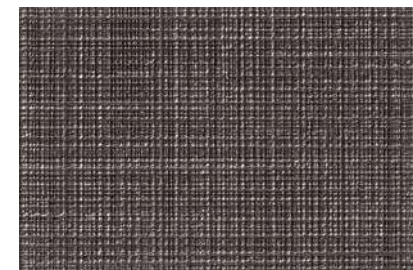
TH 34492



TH 34485



TH 34489



TH 34493

Width 92 cm

Film Stain Prevention - Barrier Type

Anti-Mold | Anti-Bacterial | Anti-Scratch | Stain Prevention

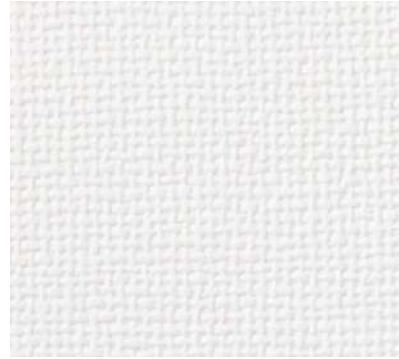
Notes : 05, 07 Please be sure to check p. 272.

Film Stain Prevention - Barrier Type



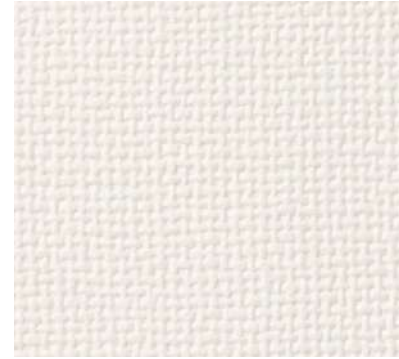
TH 34494

Long-Term



TH 34495

Long-Term



TH 34496

Long-Term



TH 34497

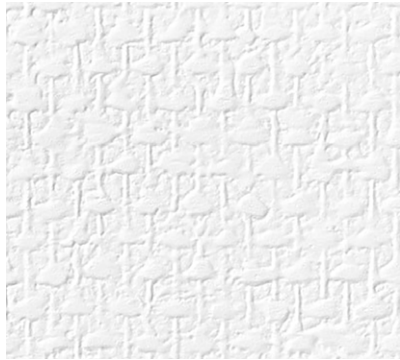
Long-Term

Width 92 cm

[Film Stain Prevention - Barrier Type](#)

Anti-Mold | Anti-Bacterial | Anti-Scratch | Stain Prevention

Note: 07 Please be sure to check p. 272.

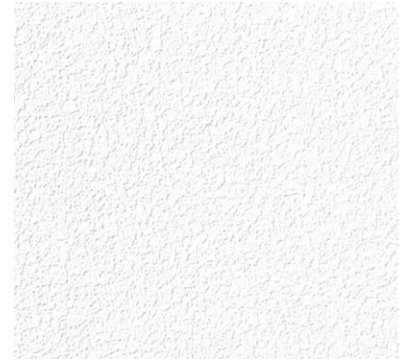


TH 34498

Long-Term

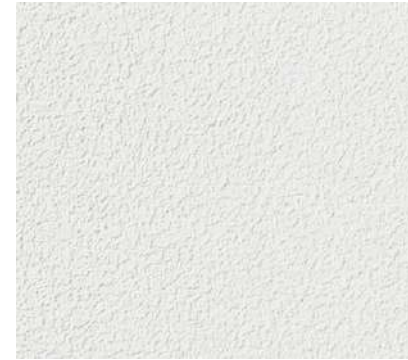


TH 34499



TH 34500

Long-Term



TH 34501

Width 92 cm

[Film Stain Prevention - Barrier Type](#)

Anti-Mold | Anti-Bacterial | Anti-Scratch | Stain Prevention

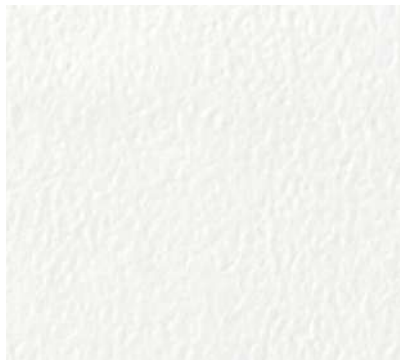
Note: 07 Please be sure to check p. 272.

Width 92 cm

[Film Stain Prevention - Barrier Type](#)

Anti-Mold | Anti-Bacterial | Anti-Scratch | Stain Prevention

Note: 07 Please be sure to check p. 272.



TH 34502



TH 34503



TH 34504 NEW



TH 34505 NEW

Width 92 cm

[Film Stain Prevention - Barrier Type](#)

Anti-Mold | Anti-Bacterial | Anti-Scratch | Stain Prevention

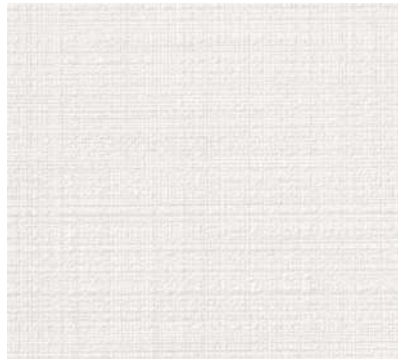
Notes : 05, 07 Please be sure to check p. 272.

Width 92 cm \updownarrow 64 cm \leftrightarrow 92 cm \bullet Random Match

[Film Stain Prevention - Barrier Type](#)

Anti-Mold | Anti-Bacterial | Stain Prevention

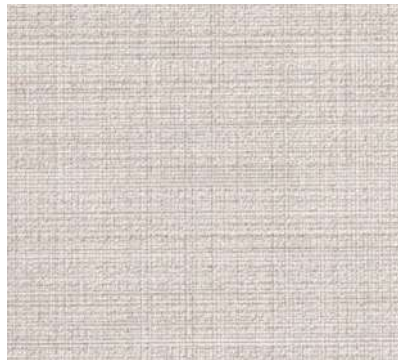
Notes : 05, 07 Please be sure to check p. 272.



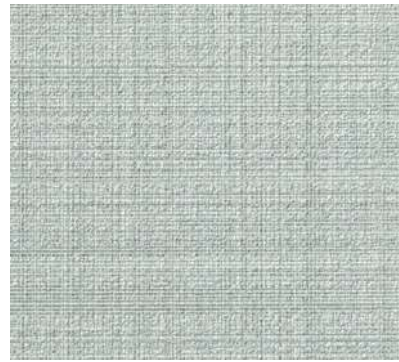
TH 34506



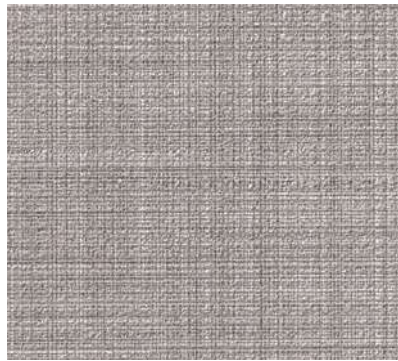
TH 34509



TH 34507



TH 34510



TH 34508



TH 34511

Width 92.5 cm ↓64.1 cm ↔92.5 cm

Film Stain Prevention - Barrier Type

Anti-Mold | Anti-Bacterial | Anti-Scratch | Stain Prevention

Notes: 01, 02, 07 Please be sure to check p. 272.



TH 34510

ACTUS - Poliform / VENTURA CHAIR / <https://www.actus-interior.com>

Louis Poulsen Japan • Louis Poulsen / NJP Table Lamp / <https://www.louispoulsen.com>



TH 34513



TH 34512



TH 34513

Width 92.5 cm ↓ 33.4 cm ↔ 46.4 cm (Emboss Repeat)

[Film Stain Prevention - Barrier Type](#)

Anti-Mold | Anti-Bacterial | Stain Prevention

Note: 07 Please be sure to check p. 272.



TH 34514



TH 34515

Width 92 cm ↓ 25 cm ↔ 46.2 cm

[Film Stain Prevention - Barrier Type](#)

Anti-Mold | Anti-Bacterial | Anti-Scratch | Stain Prevention

Note: 07 Please be sure to check p. 272.



TH 34516



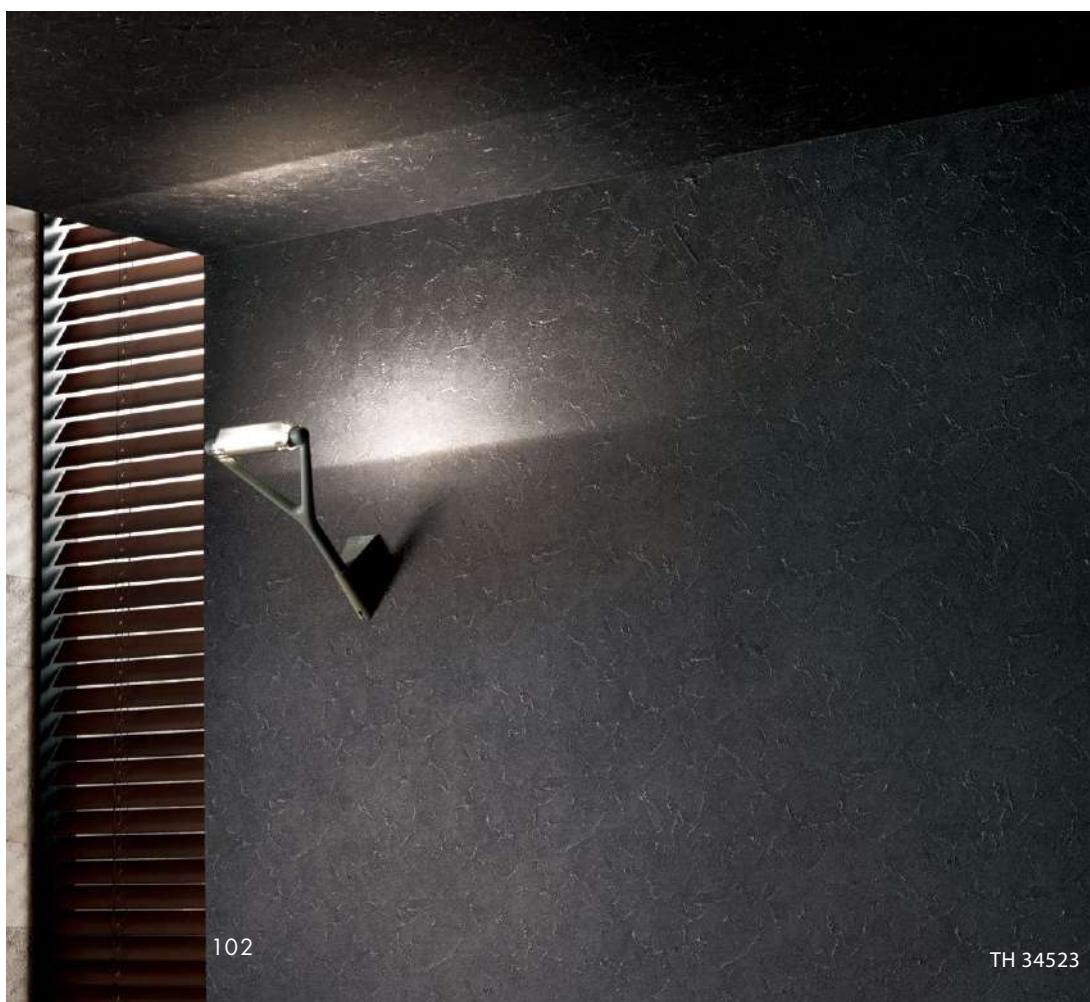
TH 34517

Width 92 cm ↓ 32.1 cm ↔ 30.7 cm (Emboss Repeat)

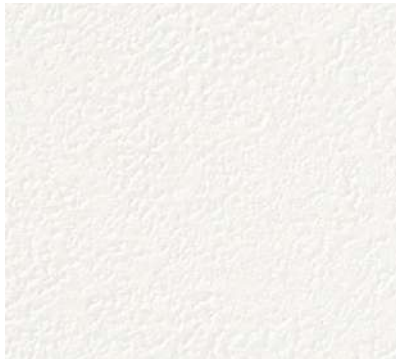
[Film Stain Prevention - Barrier Type](#)

Anti-Mold | Anti-Bacterial | Anti-Scratch | Stain Prevention

Notes: 01, 02, 07 Please be sure to check p. 272.



TH 34523



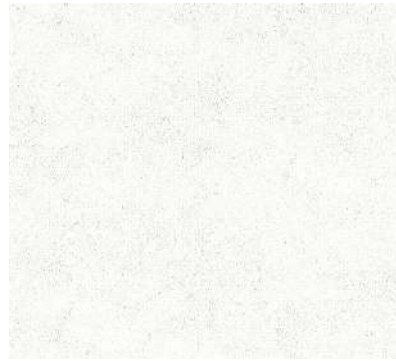
TH 34518

Width 92 cm

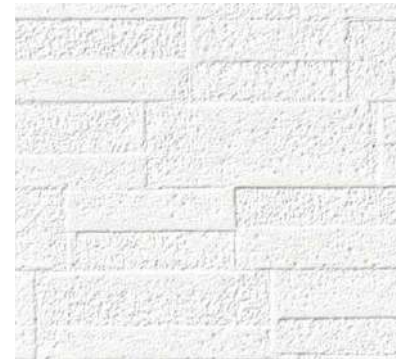
[Film Stain Prevention - Barrier Type](#)

Anti-Mold | Anti-Bacterial | Anti-Scratch
Stain Prevention

Notes : 05, 07 Please be sure to check p. 272.



TH 34518(1 scale: 10 cm)



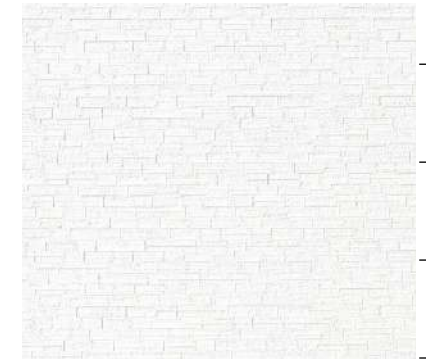
TH 34521

Width 92.5 cm ↓21.4 cm ↔30.9 cm
(Emboss Repeat)

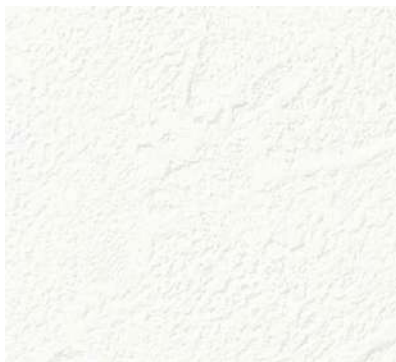
[Film Stain Prevention - Barrier Type](#)

Anti-Mold | Anti-Bacterial | Stain Prevention

Note: 07 Please be sure to check p. 272.



TH 34521(1 scale: 10 cm)



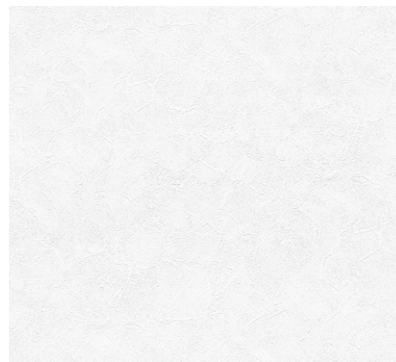
TH 34519

Width 92 cm ↓30.7 cm ↔46.2 cm
(Emboss Repeat)

[Film Stain Prevention - Barrier Type](#)

Anti-Mold | Anti-Bacterial | Anti-Scratch
Stain Prevention

Note: 07 Please be sure to check p. 272.



TH 34519(1 scale: 10 cm)



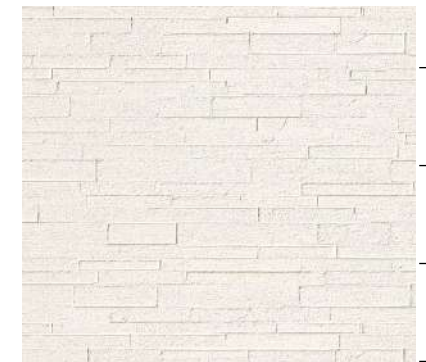
TH 34522

Width 92.5 cm ↓32 cm ↔46.3 cm
(Emboss Repeat)

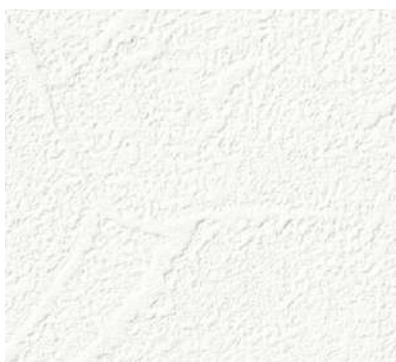
[Film Stain Prevention - Barrier Type](#)

Anti-Mold | Anti-Bacterial | Stain Prevention

Note: 07 Please be sure to check p. 272.



TH 34522(1 scale: 10 cm)



TH 34520

Long-Term

Width 92 cm ↓30.7 cm ↔46.2 cm
(Emboss Repeat)

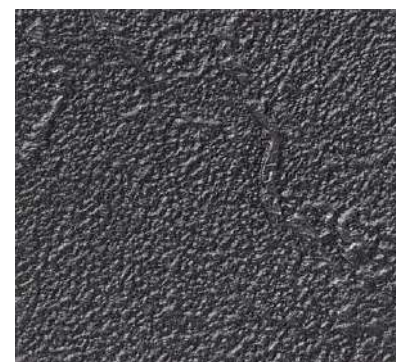
[Film Stain Prevention - Barrier Type](#)

Anti-Mold | Anti-Bacterial | Anti-Scratch
Stain Prevention

Note: 07 Please be sure to check p. 272.



TH 34520(1 scale: 10 cm)



TH 34523

Width 92 cm ↓31 cm ↔46.2 cm
(Emboss Repeat)

[Film Stain Prevention - Barrier Type](#)

Anti-Mold | Anti-Bacterial | Anti-Scratch
Stain Prevention

Note: 07 Please be sure to check p. 272.



TH 34523(1 scale: 10 cm)

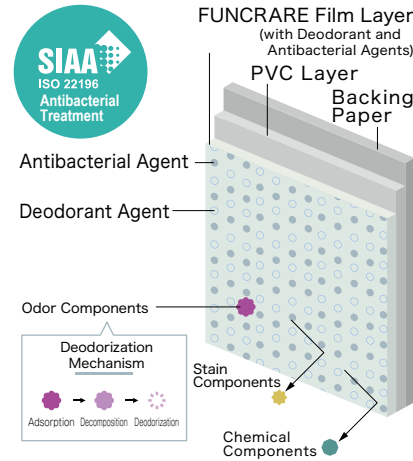
Film Stain Prevention - Deodorant Type

1. Deodorization of Unpleasant Odors

The deodorant agent blended into the surface film chemically reacts with, adsorbs, and decomposes odor-causing substances. This provides a deodorizing effect against common household odors, cigarette smoke, and formaldehyde.

2. Excellent Stain Resistance and Chemical Resistance

The film facilitates the removal of stains with water or a neutral detergent and offers particularly high stain-resistant performance against water-based stains. It also offers excellent chemical resistance and antibacterial properties, helping to maintain a clean environment.



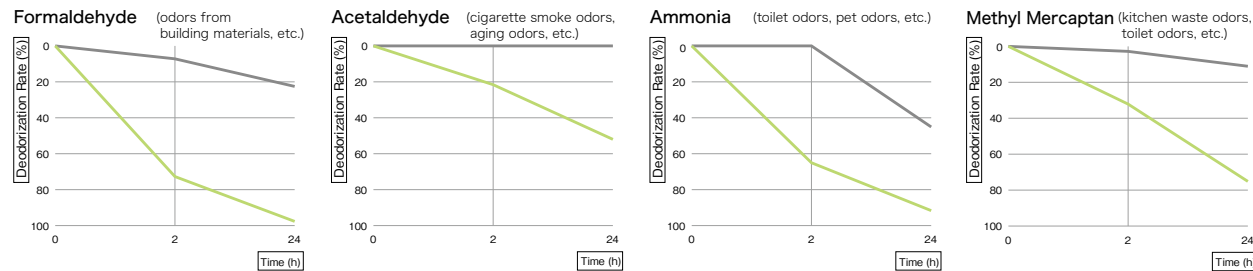
Deodorization Mechanism

The deodorant and antibacterial agents blended into the film chemically react with, adsorb, and decompose odor-causing substances, achieving a deodorizing effect.

The effect lasts for approximately 5 to 10 years, although this varies depending on the environment.

Deodorization Performance Test

[Test Results]



[Test Methods]

1. A 12 cm × 12 cm sample is prepared, and its edges and back surface are sealed with aluminum tape to create a test specimen with an effective area of 100 cm² (10 cm × 10 cm). 2. The test specimen is placed in a 5 L Tedlar bag. 3. Each test gas is adjusted to the predetermined concentration and injected at a specified volume (2 L). 4. Residual gas concentrations after 2 hours and 24 hours are measured using a detector tube. 5. A blank test is defined as the same evaluation performed simultaneously without a sample. 6. The reduction rate is calculated based on the residual amount relative to the initial concentration.

Stain Resistance Test Results

This test evaluates stain prevention performance 24 hours after exposure to various contaminants.

Contaminants	Film Stain Prevention - Deodorant Type			General Vinyl Wallpaper		
	Water	Neutral Detergent	Alcohol	Water	Neutral Detergent	Alcohol
Coffee	○	○	○	△	△	△
Soy Sauce	○	○	○	×	△	△
Sauce	○	○	○	×	×	×
Orange Juice	○	○	○	○	○	○
Water-based Marker	—	○	○	×	×	×
Crayon	—	○	○	×	×	×
Oil-based Marker	—	△	○	×	×	×
Lipstick	—	△	×	×	×	×

[Test Method]

Based on the Wallcoverings Association's "Stain Prevention Wallpaper Performance Test."

[Evaluation Criteria]

The degree of staining is evaluated using the gray scale for assessing staining specified in JIS L 0805.

○: Grade 5 — No residual stain ○: Grade 4 — Virtually no residual stain
 △: Grade 3 — Slight residual stain ×: Grade 2 — Significant residual stain
 ××: Grade 1 — Heavy residual stain

*The above test results are measured values and are not guaranteed values.

*Test results may vary depending on the color and pattern.

*The functional properties and test results described on this page are based solely on Japanese national standards or our own internal specifications, testing methods, and criteria. We have not conducted any testing based on the standards, testing methods, or criteria of other countries or regions where the product may be sold or used.

Chemical Resistance Test Results

This test evaluates the chemical resistance performance 24 hours after exposure to various chemicals.

Chemical Names	Film Stain Prevention - Deodorant Type	General Vinyl Wallpaper
Sodium Hypochlorite (6%)	○	○
Anhydrous Ethanol (99.5 vol%)	○	○
Aqueous Ammonia (25%)	○	○
Hydrogen Peroxide Solution (3.5 w/v%)	○	○
Povidone-Iodine (7%)	○	×
Hydrochloric Acid (9.5%)	○	△
Benzalkonium Chloride Solution (10%)	○	△
Formalin Solution (37%)	○	○
Cresol Soap Solution (3%)	○	○
Thinner (Undiluted)	○	○
Lugol's Solution (Undiluted)	△	×
Acridol (Undiluted)	○	×
MEK (Undiluted)	○	△

[Test Method]

Based on JIS K 6902B, and the contaminants determined according to our in-house standards.

[Evaluation Criteria]

Comprehensive evaluation based on change in color and physical conditions.

Color Change: The degree of staining is evaluated using the gray scale for assessing staining specified in JIS L 0805.

Physical Change: Appearance changes are evaluated by visual inspection.

○ ... No change ○ ... Slight change
 △ ... Change observed × ... Obvious change

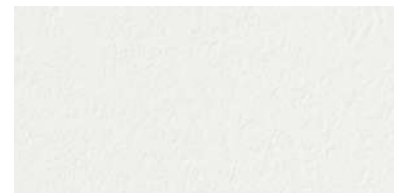




Film Stain Prevention - Deodorant Type



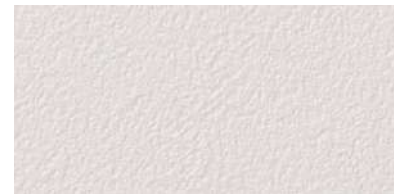
TH 34007 (P.4) NEW
Approximate JPMA color (code) 65-80D



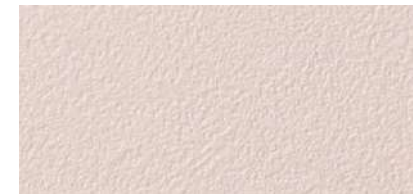
TH 34011 (P.4) NEW
Approximate JPMA color (code) N-93



TH 34003 (P.4) NEW
Approximate JPMA color (code) 25-80D



TH 34013 (P.4) NEW
Approximate JPMA color (code) 15-85A



TH 34002 (P.4) NEW
Approximate JPMA color (code) 15-80D



TH 34001 (P.4) NEW
Approximate JPMA color (code) 05-80B



TH 34010 (P.4) NEW
Approximate JPMA color (code) 95-70D

Width 92 cm

Film Stain Prevention - Deodorant Type

Anti-Mold | Anti-Bacterial | Anti-Scratch | Stain Prevention | Deodorant

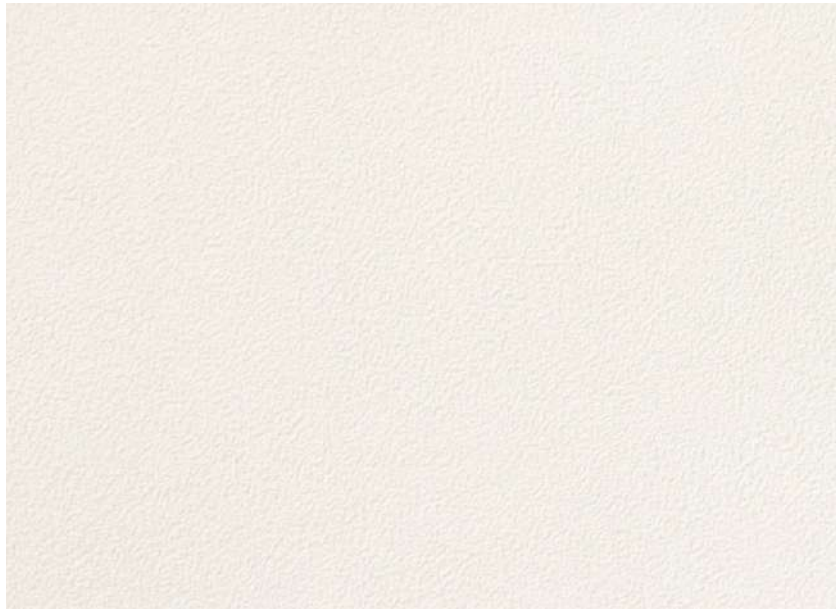
Notes: 02, 05, 07 Please be sure to check p. 272.

Note about Approximate JPMA color (code)

The Approximate JPMA color (code) is shown; however, this is only an approximate match and is not an identical color. The appearance of the color tone may vary depending on the texture of the wallpaper, such as its print, embossing, sheen, and so on. Please check the actual color tone using the samples in the sample book or other physical samples before use. In addition, the color tone may appear different depending on the usage environment such as lighting conditions and viewing angles, or variations between manufacturing batches.

Products with item numbers shown in blue are also listed on other pages.

Film Stain Prevention - Deodorant Type



TH 34531

Long-Term



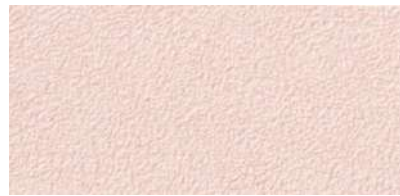
TH 34532



TH 34535



TH 34533



TH 34536



TH 34534



TH 34537

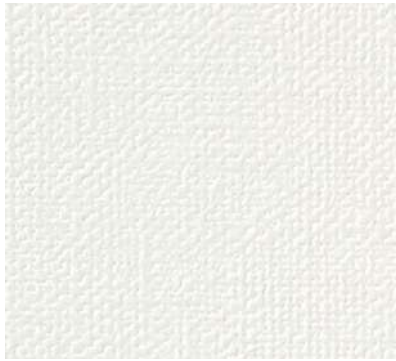
Width 92 cm

Film Stain Prevention - Deodorant Type

Anti-Mold | Anti-Bacterial | Anti-Scratch | Stain Prevention | Deodorant

Note: 07 Please be sure to check p. 272.





TH 34538



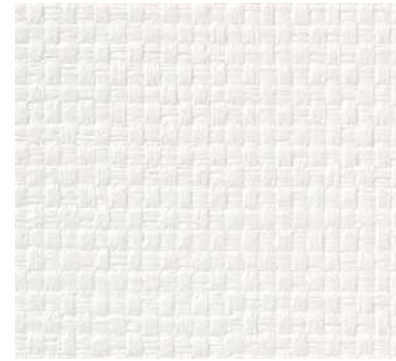
TH 34539

Width 92 cm

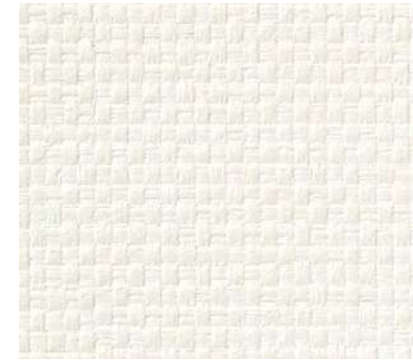
[Film Stain Prevention - Deodorant Type](#)

Anti-Mold | Anti-Bacterial | Stain Prevention | Deodorant

Note: 07 Please be sure to check p. 272.



TH 34540



TH 34541

Width 92 cm

[Film Stain Prevention - Deodorant Type](#)

Anti-Mold | Anti-Bacterial | Stain Prevention | Deodorant

Notes: 02, 07 Please be sure to check p. 272.



TH 34542



TH 34543

Width 92 cm

[Film Stain Prevention - Deodorant Type](#)

Anti-Mold | Anti-Bacterial | Stain Prevention | Deodorant

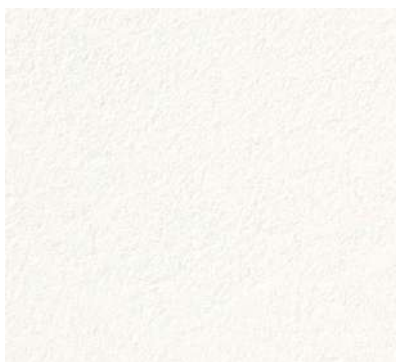
Note: 07 Please be sure to check p. 272.



TH 34544



TH 34545



TH 34546



TH 34546(1 scale: 10 cm)

Width 92.5 cm ↓32 cm ↔92.5 cm (Emboss Repeat)

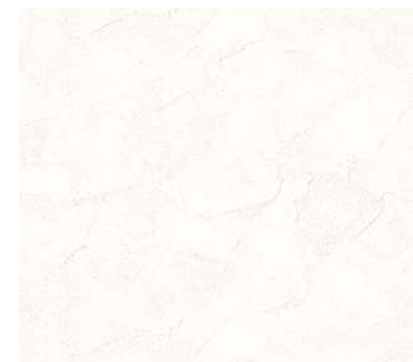
[Film Stain Prevention - Deodorant Type](#)

Anti-Mold | Anti-Bacterial | Stain Prevention | Deodorant

Note: 07 Please be sure to check p. 272.



TH 34547



TH 34547(1 scale: 10 cm)

Width 92.5 cm ↓32 cm ↔92.5 cm (Emboss Repeat)

[Film Stain Prevention - Deodorant Type](#)

Anti-Mold | Anti-Bacterial | Stain Prevention | Deodorant

Notes : 05, 07 Please be sure to check p. 272.