

# Super Durable

## JK EVAL BARRIER CLOTH

### 1. Highly Scratch Resistant

This wallpaper further enhances the durability of the "Film Stain Prevention - Barrier Type" through the strength of the EVAL film and its scratch-resistant surface structure.

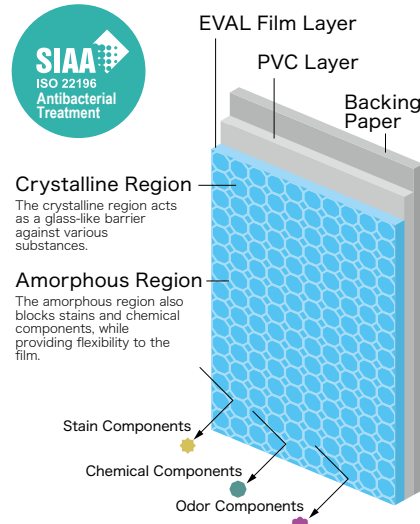
### 2. Highly Impact Resistant

It demonstrates superior impact resistance compared to general vinyl wallpaper.

### 3. EVAL Film Barrier Function

The EVAL film offers strong resistance to stains and provides an expected deodorization effect. Its excellent chemical resistance and antibacterial properties also make maintenance effortless, helping to maintain a clean and hygienic environment.

\*For details on the functions of the EVAL film, please refer to the function description for the Film Stain Prevention - Barrier Type on p. 92.



#### ■ Surface Strength Test Results for Super Durable

Super Durable meets stricter surface strength criteria.

Test Materials	5 Reciprocating Cycles	15 Reciprocating Cycles	30 Reciprocating Cycles
Super Durable Performance Criteria (*In-house criteria)	Grade 5	Grade 5	Grade 4 or higher
Anti-Scratch Wallpaper Performance Criteria (*Specified by the Wallcoverings Association)	Grade 4 or higher	—	—

#### [Test Method]

Based on the Wallcoverings Association's "Anti-Scratch Wallpaper Performance Test."

#### [Evaluation Criteria]

A specified rubbing element (200 g load) is attached and the surface is rubbed 5, 15, and 30 reciprocating cycles, and the degree of surface scratching is visually evaluated.

Grade 5: No visible change upon visual inspection

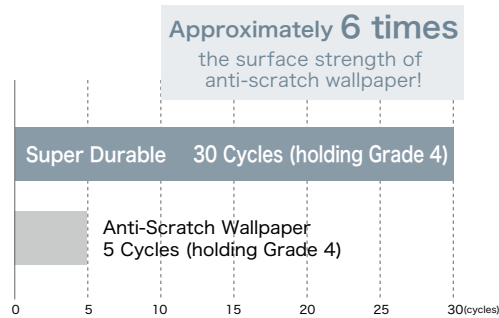
Grade 4: Minor surface scratches are observed, but no large tears to the surface layer are observed

Grade 3: Tears to the surface layer are clearly observed

Grade 2: The surface layer is torn, and the backing material (such as paper) is clearly observed (tear length less than 1 cm)

Grade 1: The surface layer is torn, and the backing material (such as paper) is clearly observed (tear length 1 cm or more)

#### ■ Surface Strength Performance Comparison



\*The above test results are measured values and are not guaranteed values.  
\*The functional properties and test results described on this page are based solely on Japanese national standards or our own internal specifications, testing methods, and criteria.  
We have not conducted any testing based on the standards, testing methods, or criteria of other countries or regions where the product may be sold or used.

#### ■ Surface Strength Performance Comparison



Super Durable

General Vinyl Wallpaper

#### ■ Stain Removal Performance Comparison



Super Durable

General Vinyl Wallpaper

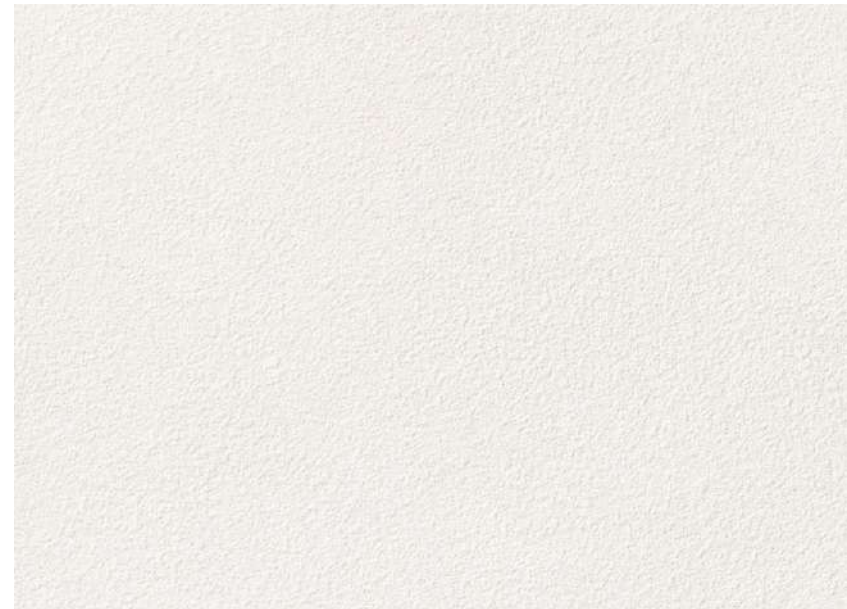
#### [Test Method]

Crayon marks applied to the wallpaper surface and then wiped off using ethanol.





Super Durable



TH 34551 NEW



TH 34552 NEW



TH 34555



TH 34553 NEW



TH 34556



TH 34554 NEW



TH 34557 NEW

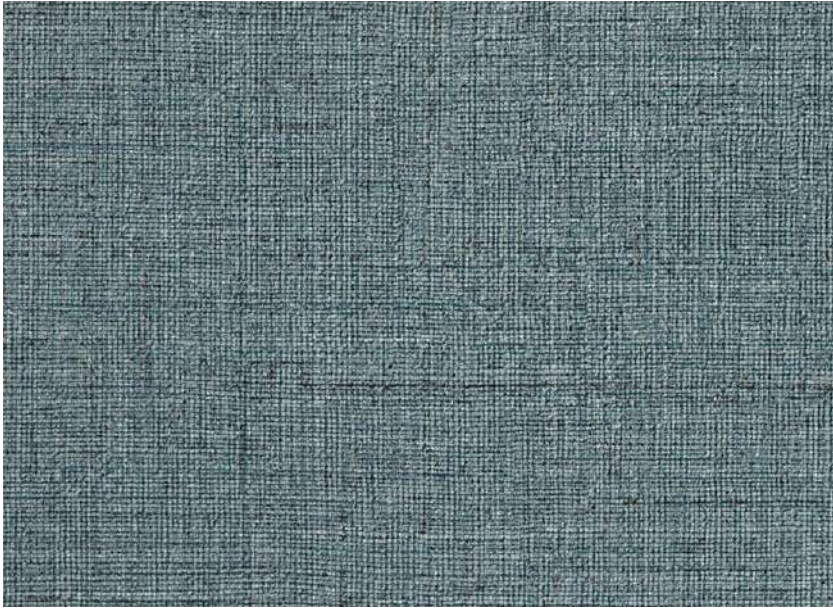
Width 92.5 cm    ↓ 64.1 cm    ↔ 92.5 cm

[Super Durable](#)

Anti-Mold | Anti-Bacterial | Anti-Scratch | Super Durable | Stain Prevention

Notes : 05, 07    Please be sure to check p. 272.

Super Durable



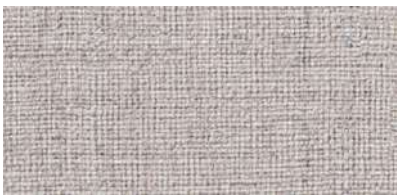
TH 34558 NEW



TH 34559 NEW



TH 34562 NEW



TH 34560 NEW



TH 34563 NEW



TH 34561 NEW



TH 34564 NEW

Width 92 cm    ↓ 32.1 cm    ↔ 92 cm    ● Random Match

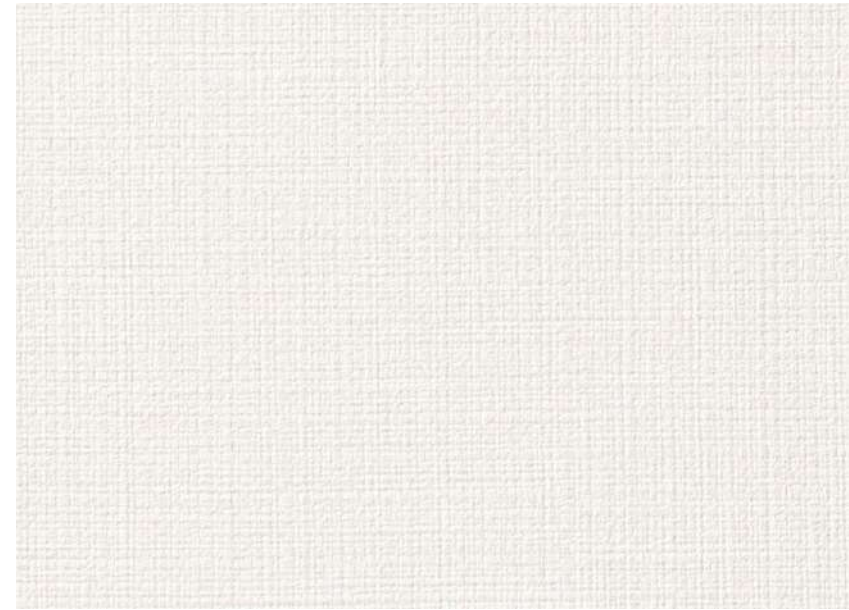
[Super Durable](#)

Anti-Mold | Anti-Bacterial | Anti-Scratch | Super Durable | Stain Prevention

Notes : 05, 07 Please be sure to check p. 272.



TH 34558 Flooring : IS-2153 (2023-2026 FLOOR TILE)



TH 34565



TH 34566



TH 34054 (P.12) NEW  
Approximate JPMA color (code) 17-70P



TH 34567



TH 34056 (P.12) NEW  
Approximate JPMA color (code) 35-50H



TH 34059 (P.12) NEW  
Approximate JPMA color (code) 65-40H



TH 34057 (P.12) NEW  
Approximate JPMA color (code) 45-50H

Width 92 cm

**Super Durable**

Anti-Mold | Anti-Bacterial | Anti-Scratch | Super Durable | Stain Prevention

Notes : 05, 07 Please be sure to check p. 272.

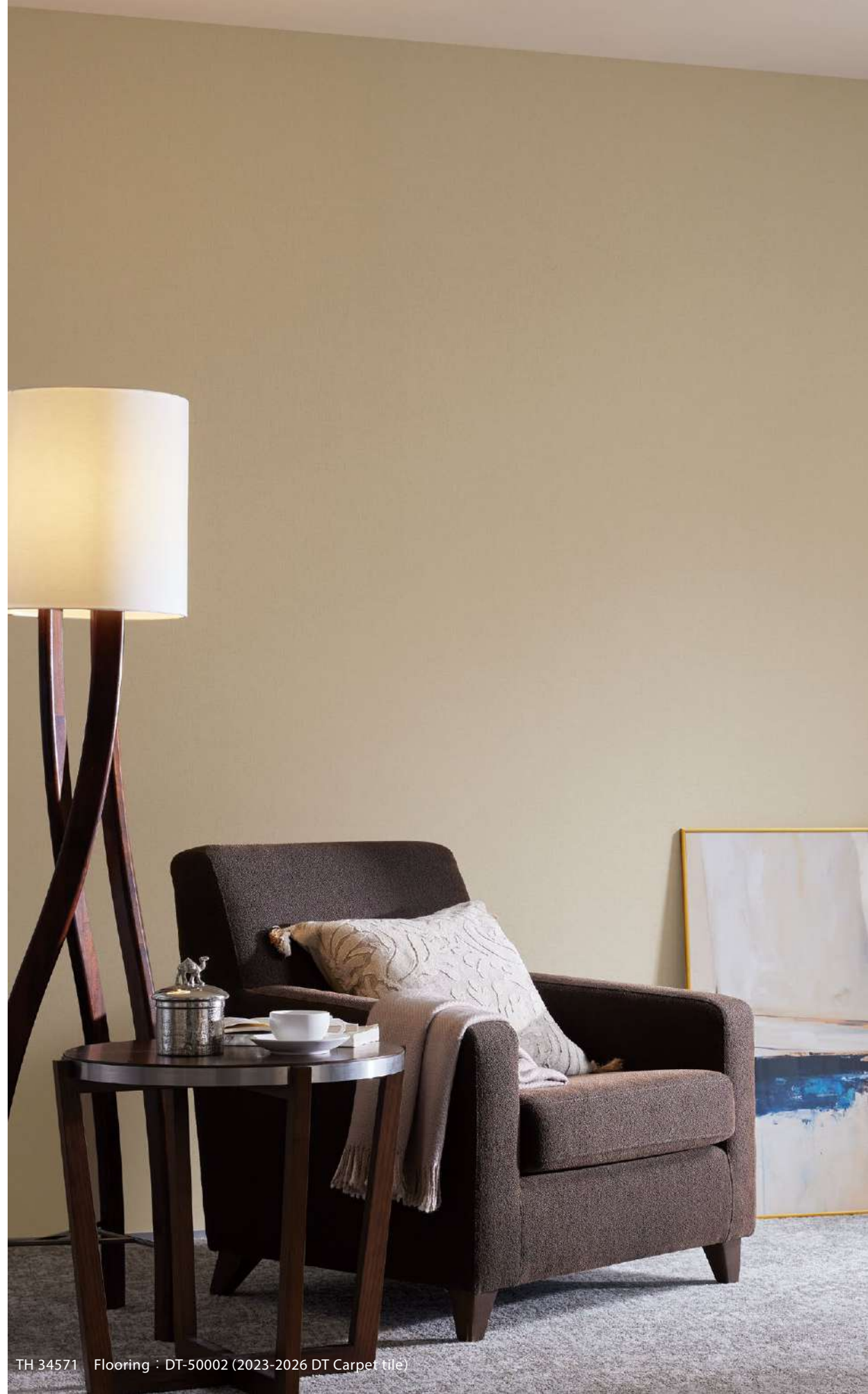
**Note about Approximate JPMA color (code)**

The Approximate JPMA color (code) is shown; however, this is only an approximate match and is not an identical color. The appearance of the color tone may vary depending on the texture of the wallpaper, such as its print, embossing, sheen, and so on.

Please check the actual color tone using the samples in the sample book or other physical samples before use.

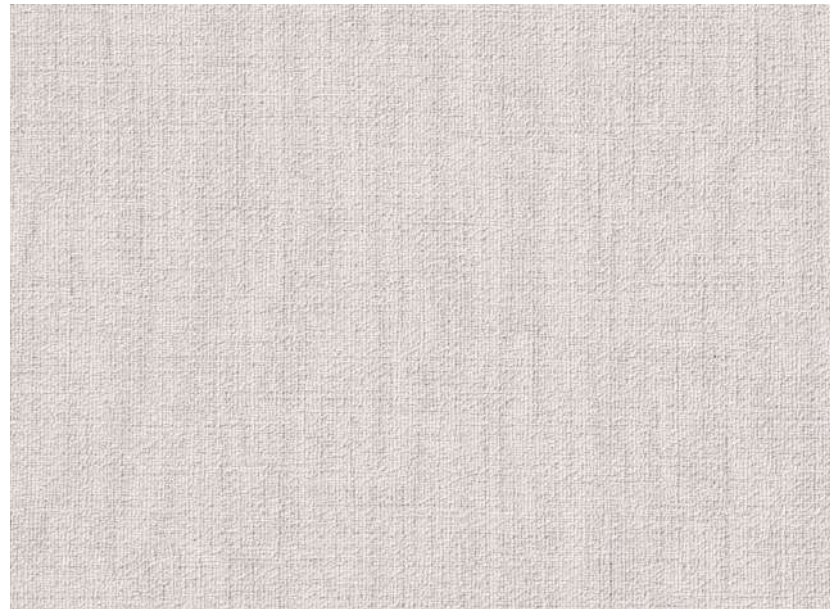
In addition, the color tone may appear different depending on the usage environment such as lighting conditions and viewing angles, or variations between manufacturing batches.

Products with item numbers shown in blue are also listed on other pages.





Super Durable



TH 34568



TH 34573  
Same-Pattern REATEC TC-5185



TH 34574  
Same-Pattern REATEC TC-5186



TH 34569  
Same-Pattern REATEC TC-5189



TH 34571  
Same-Pattern REATEC TC-5191



TH 34575  
Same-Pattern REATEC TC-5187



TH 34570  
Same-Pattern REATEC TC-5190



TH 34572  
Same-Pattern REATEC TC-5192



TH 34576  
Same-Pattern REATEC TC-5188

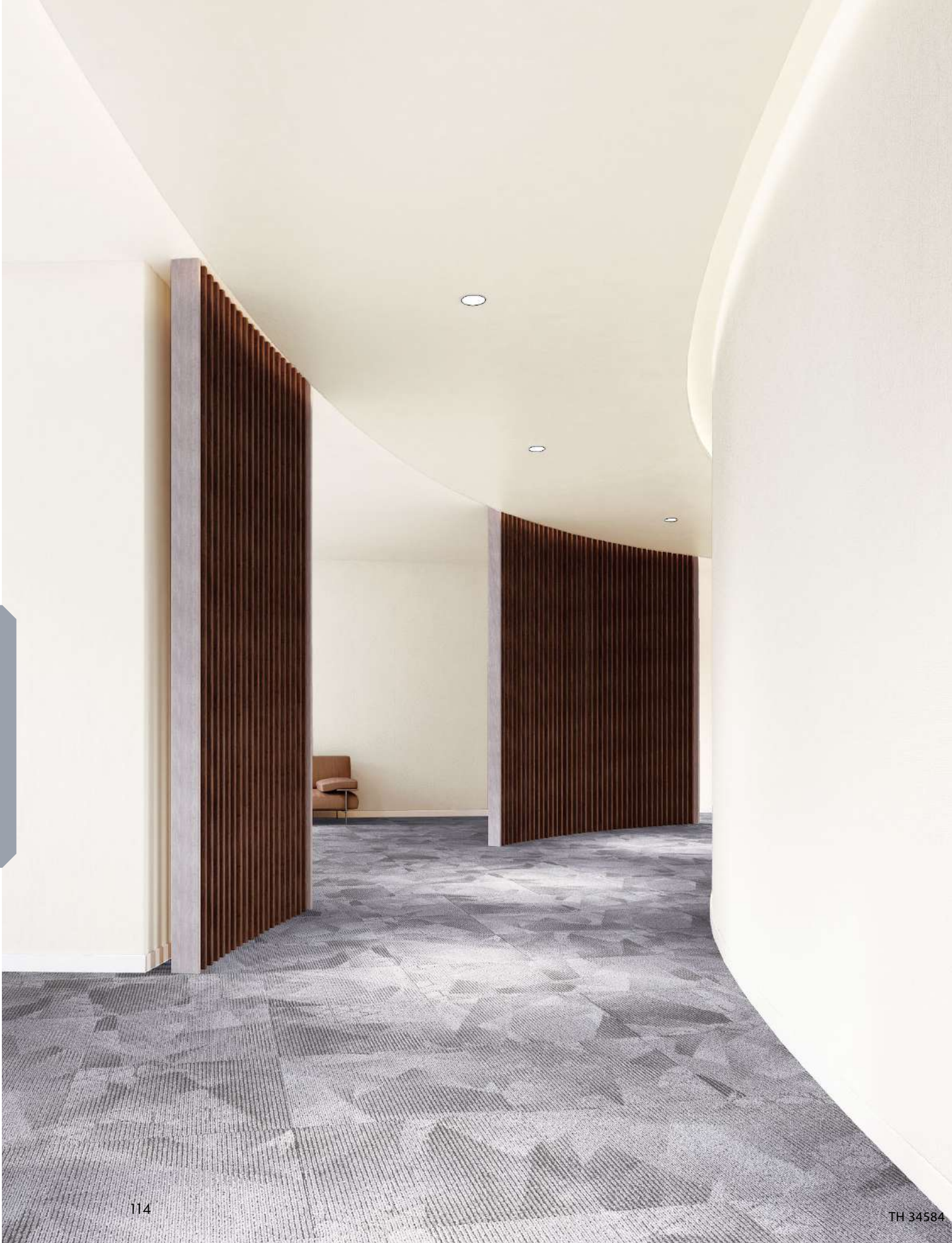
Width 92 cm

**Super Durable**

Anti-Mold | Anti-Bacterial | Anti-Scratch | Super Durable | Stain Prevention

Notes: 07, 11 Please be sure to check p. 272.

Super Durable



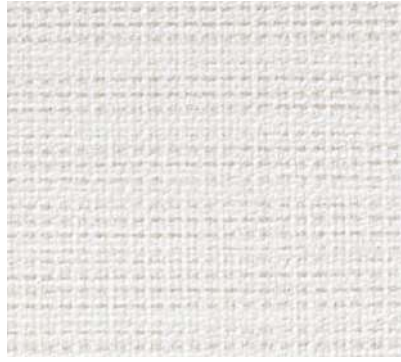
TH 34577 For Projectors

Width 92 cm  
**Super Durable**  
Anti-Mold | Anti-Bacterial | Anti-Scratch  
Super Durable | Stain Prevention  
Notes : 05, 07 Please be sure to check p. 272.



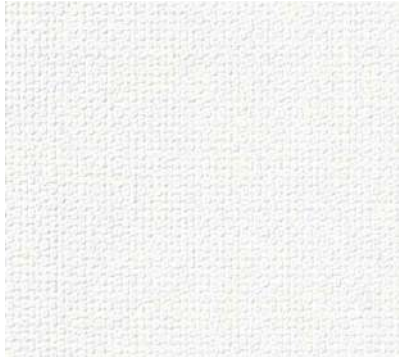
TH 34578 Long-Term

Width 92 cm ↓ 32 cm ↔ 46.2 cm  
● Random Match  
**Super Durable**  
Anti-Mold | Anti-Bacterial | Anti-Scratch  
Super Durable | Stain Prevention  
Note: 07 Please be sure to check p. 272.



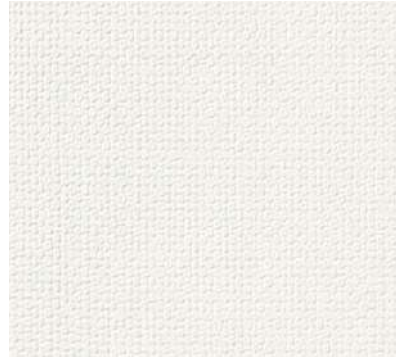
TH 34579

Width 92 cm ↓ 32 cm ↔ 46 cm  
**Super Durable**  
Anti-Mold | Anti-Bacterial | Anti-Scratch  
Super Durable | Stain Prevention  
Notes: 02, 07 Please be sure to check p. 272.



TH 34580

Long-Term



TH 34581

Long-Term



TH 34582



TH 34583

Width 92 cm

Super Durable

Anti-Mold | Anti-Bacterial | Anti-Scratch | Super Durable | Stain Prevention

Note: 07 Please be sure to check p. 272.

Width 92 cm

Super Durable

Anti-Mold | Anti-Bacterial | Anti-Scratch | Super Durable | Stain Prevention

Note: 07 Please be sure to check p. 272.



TH 34584

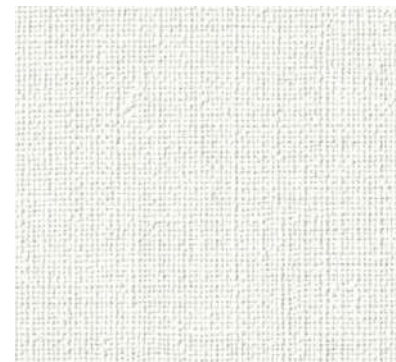
Same-Pattern REATEC TN-5168

Long-Term



TH 34585

Same-Pattern REATEC TN-5169



TH 34586

Long-Term



TH 34587

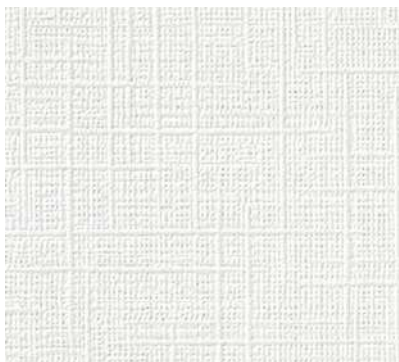
Same-Pattern REATEC TN-5170

Width 92 cm

Super Durable

Anti-Mold | Anti-Bacterial | Anti-Scratch | Super Durable | Stain Prevention

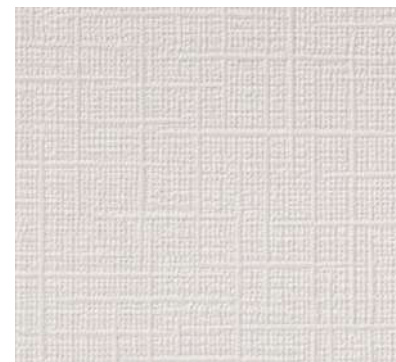
Notes: 07, 11 Please be sure to check p. 272.



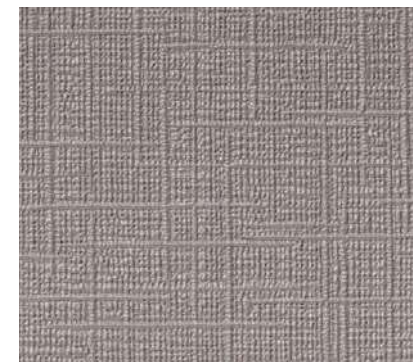
TH 34588



TH 34589



TH 34590



TH 34591

Width 92 cm

Super Durable

Anti-Mold | Anti-Bacterial | Anti-Scratch | Super Durable | Stain Prevention

Note: 07 Please be sure to check p. 272.

For Projectors Please refer to "Wallpaper for Projectors" on p. 262.

# MATERIA

Modern craftsmanship for Wallcoverings

# SINTILA



TH 34601 NEW



TH 34602 NEW



Full-Width 92 cm

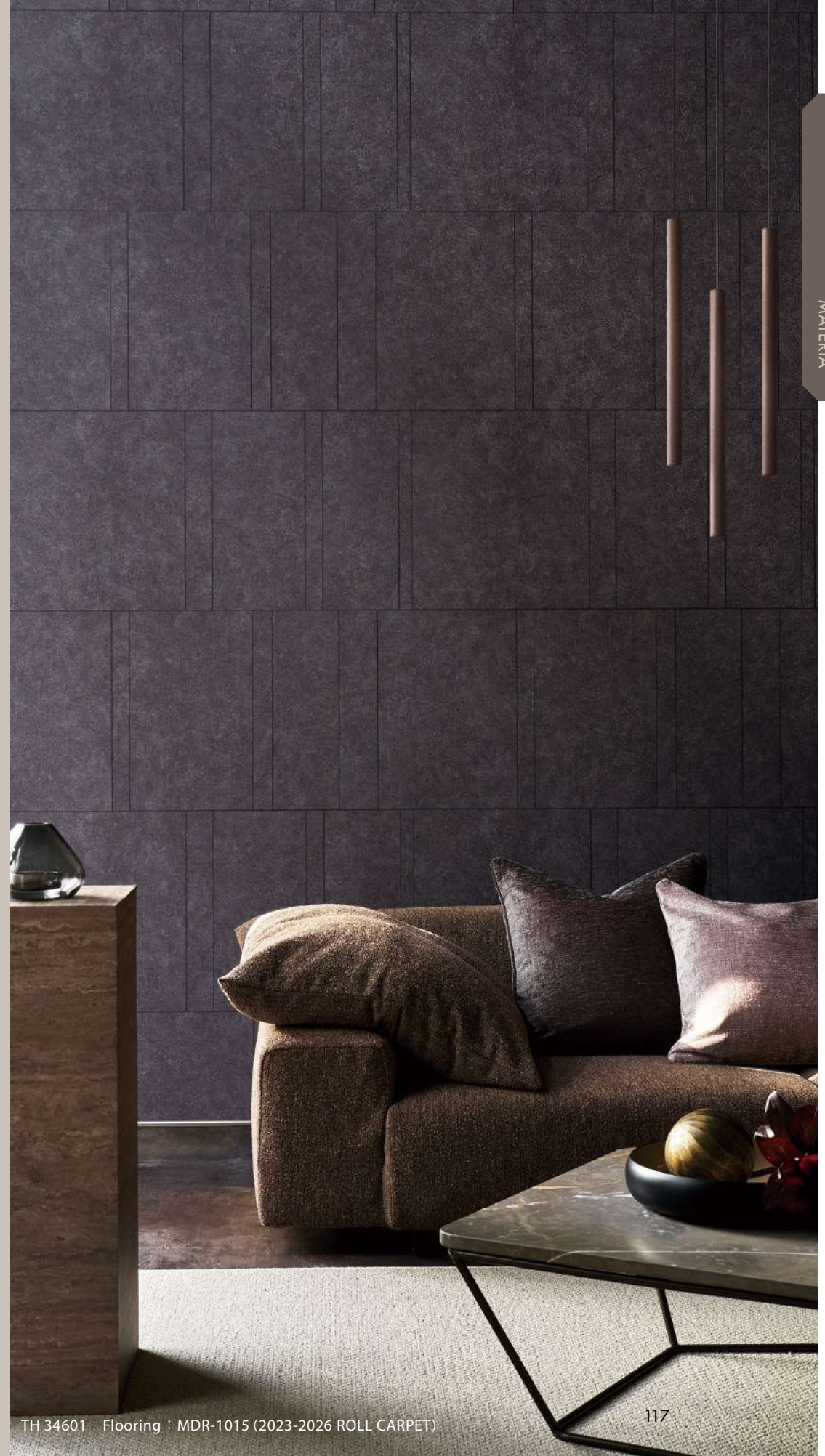
TH 34602

Width 92 cm    ↓ 91.6 cm    ↔ 92 cm

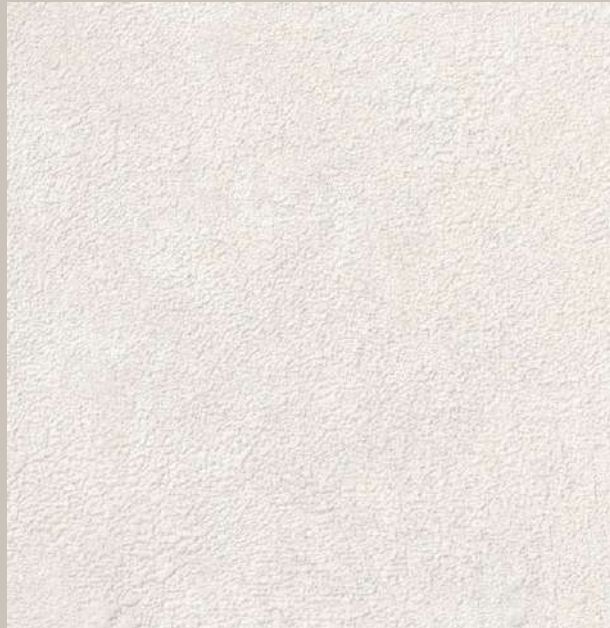
Anti-Mold

Note: 04

Please be sure to check p. 272.



# FODINA



TH 34603 NEW



TH 34605 NEW

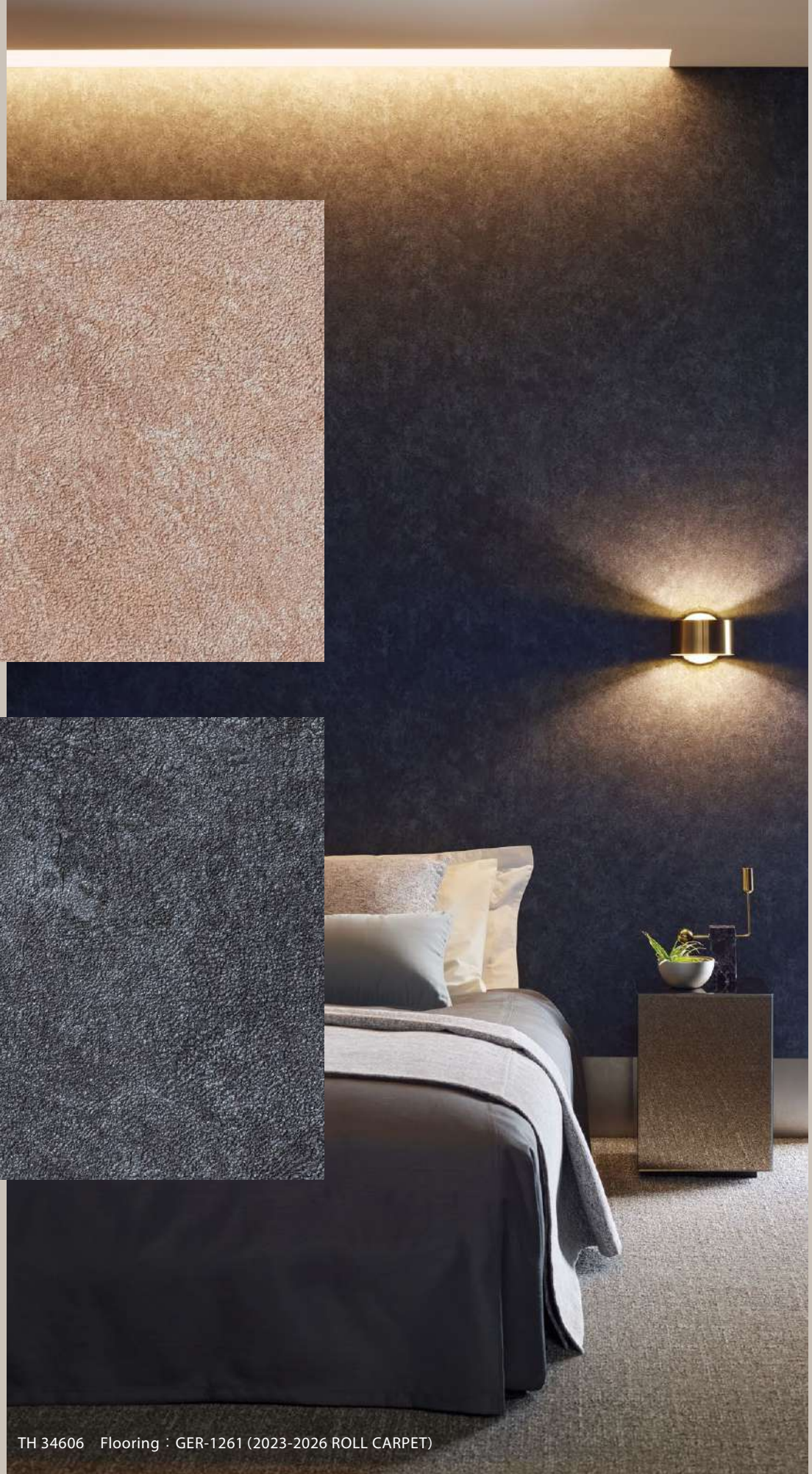


TH 34604 NEW



TH 34606 NEW

Width 92 cm    ↕ 64.1 cm    ↔ 92 cm  
Anti-Mold | Anti-Bacterial | Water Repellent  
Note: 04 Please be sure to check p. 272.



TH 34606 Flooring : GER-1261 (2023-2026 ROLL CARPET)

# RANIA



TH 34607 NEW



TH 34608 NEW



Full-Width 92 cm  
TH 34607

Width 92 cm    ↓ 64 cm    ↔ 92 cm  
● 1/2 Drop  
Anti-Mold



# PELGERE



TH 34609 NEW

[Easy Installation](#)



TH 34611 NEW

[Easy Installation](#)



TH 34610 NEW

[Easy Installation](#)



TH 34612 NEW

[Easy Installation](#)

Width 92 cm    ⚓ 64.2 cm    ↔ 92 cm

Anti-Mold | Anti-Bacterial

Note: 04 Please be sure to check p. 272.

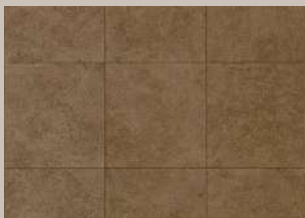
# CODILS



TH 34613 NEW



TH 34614 NEW



Full-Width 92 cm  
TH 34614

Width 92 cm    ↓ 64.1 cm    ↔ 92 cm  
Anti-Mold



MATERIA

TH 34613

# MINETE



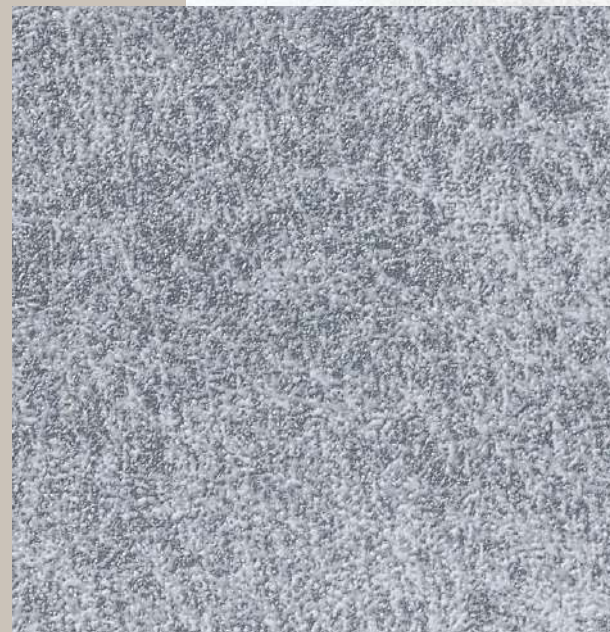
TH 34615 NEW



TH 34617 NEW



TH 34616 NEW



TH 34618 NEW

Width 92.5 cm    † 64 cm    ‹ 92.5 cm

Anti-Mold



# LINERE



TH 34619 NEW



TH 34620 NEW



Full-Width 92 cm  
TH 34620

Width 92 cm    ↓ 64.1 cm    ↔ 92 cm  
**Anti-Mold**

Note: 04  
Please be sure to check p. 272.



TH 34619

# BERFA



TH 34621 NEW

Easy Installation



TH 34623 NEW

Easy Installation



TH 34622 NEW

Easy Installation



TH 34624 NEW

Easy Installation

Width 92 cm    ⌀ 39.6 cm    ↔ 46 cm

Anti-Mold

Note: 04 Please be sure to check p. 272.

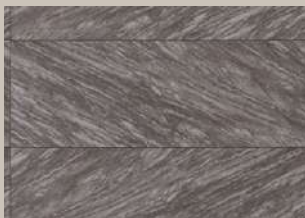
# LIBETRA



TH 34625 NEW



TH 34626 NEW



Full-Width 92 cm

TH 34626

Width 92 cm    ⚓ 64.2 cm    ↔ 92 cm  
**Anti-Mold**

\*The installation example photo shows TH34625 installed horizontally. Please note that the tile design is elongated horizontally with respect to the roll direction.



MATERIA

# Material

Material



TH 34631 NEW



TH 34632 NEW

Width 92.5 cm    ↓ 61.3 cm    ↔ 92.5 cm  
 Anti-Mold | Anti-Bacterial | Anti-Scratch | Water Repellent



Full-Width 92.5 cm  
 TH 34631



**TH 34633** NEW  
Same-Pattern REATEC TN-5322



**TH 34634** NEW  
Same-Pattern REATEC TN-5325

Width 92 cm    ↓ 94 cm    ↔ 92 cm

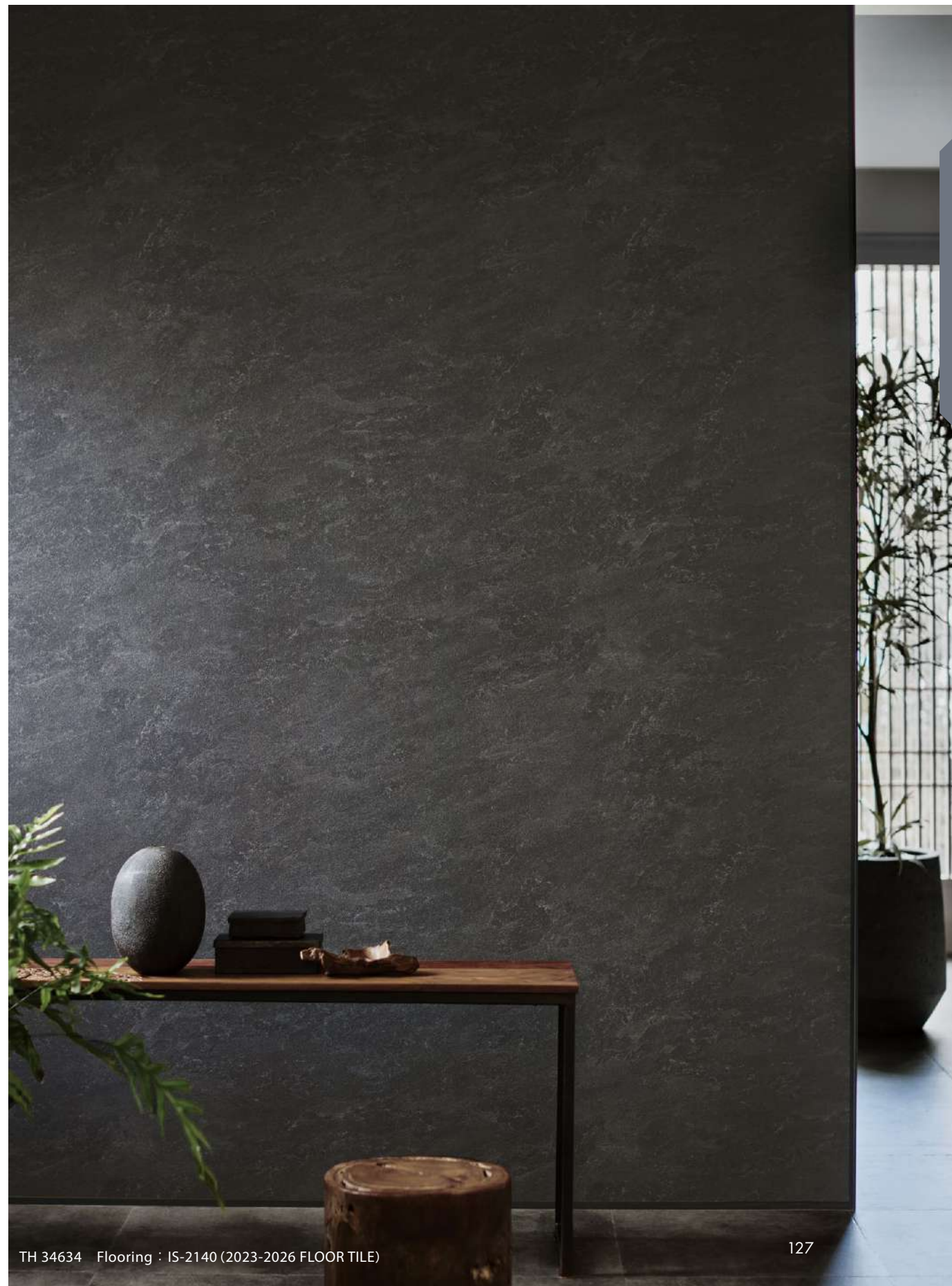
Anti-Mold

Notes: 03, 04, 11    Please be sure to check p. 272.



Full-Width 92 cm

TH 34633



Material



TH 34635 NEW



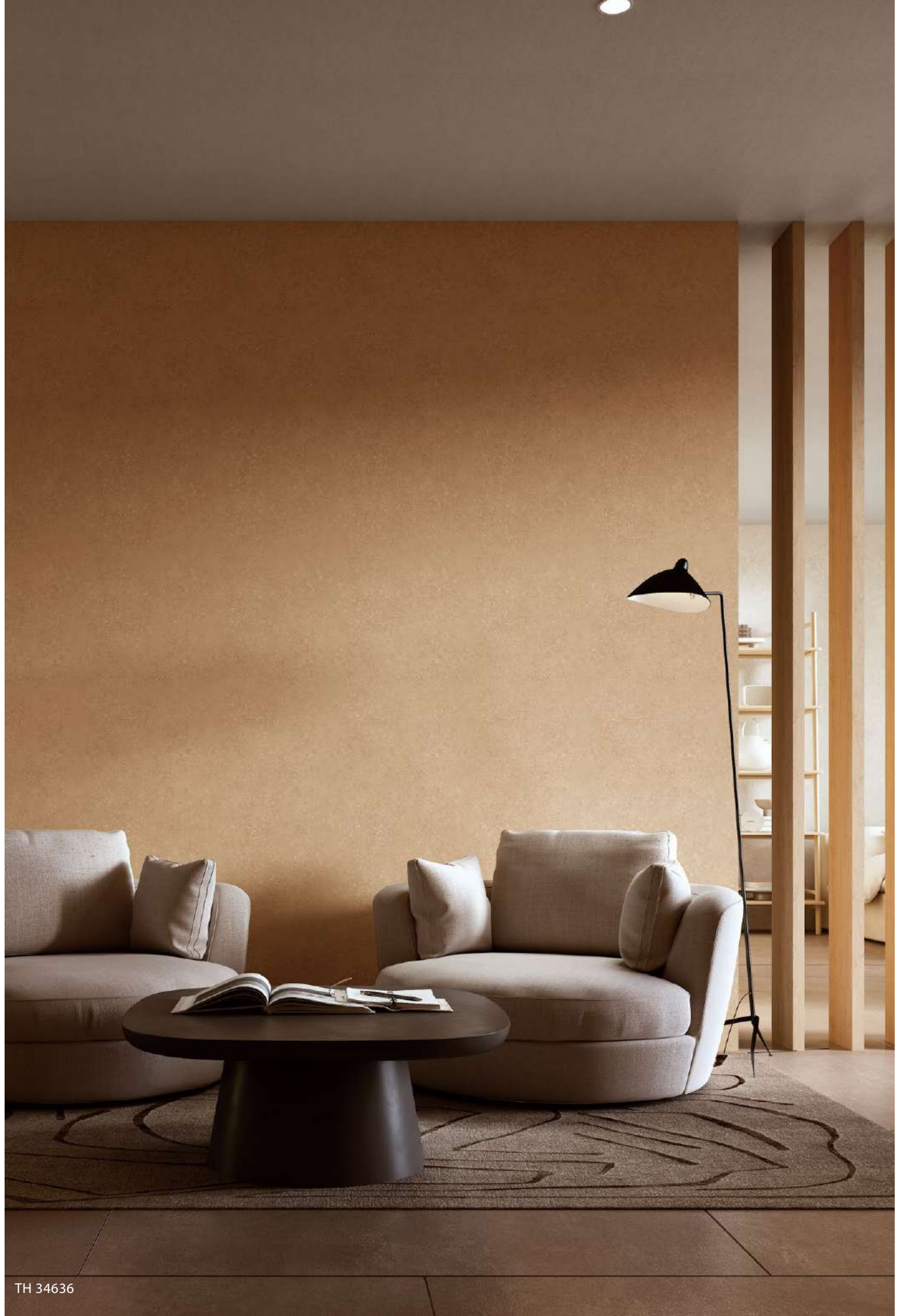
TH 34636 NEW

Width 92 cm    ↓ 64.1 cm    ↔ 92 cm  
Anti-Mold



Full-Width 92 cm

TH 34635



TH 34636



TH 34637 · 34502 (P.100)



TH 34640



TH 34637



TH 34638(1 scale: 10 cm)



TH 34639



TH 34639(1 scale: 10 cm)



TH 34638

Width 92.5 cm    ↓ 64.1 cm    ↔ 92.5 cm  
 Anti-Mold | Anti-Bacterial



TH 34640

Width 92 cm    ↓ 64.1 cm    ↔ 92 cm  
 Anti-Mold

Material



Full-Width 92 cm  
TH 34641

TH 34641 NEW

Width 92 cm    ↓ 92.8 cm    ↔ 92 cm

Anti-Mold

Notes: 04, 05    Please be sure to check p. 272.



TH 34641    Flooring : IS-2076 (2023-2026 FLOOR TILE)



Full-Width 92 cm  
TH 34642

TH 34642 NEW

Width 92 cm    ↓ 125 cm    ↔ 92 cm

Anti-Mold

Notes: 03, 05    Please be sure to check p. 272.



TH 34642



TH 34643 NEW

Width 92 cm ↓ 125 cm ↔ 92 cm

Anti-Mold

Note: 05 Please be sure to check p. 272.



Full-Width 92 cm

TH 34643



TH 34644



TH 34645



TH 34644



TH 34645 NEW



TH 34646 NEW



Full-Width 92 cm

TH 34644

Width 92 cm    ↕ 92.9 cm    ↔ 92 cm  
Anti-Mold

Note: 05 Please be sure to check p. 272.



Full-Width 92 cm

TH 34645

Width 92 cm    ↕ 90 cm    ↔ 92 cm    ● 1/2 Drop  
Anti-Mold | Anti-Bacterial | Water Repellent



Full-Width 92 cm

TH 34646



TH 34647



TH 34648



TH 34649 Flooring : IS-2070-B (2023-2026 FLOOR TILE)

Material



TH 34647 NEW



TH 34648



TH 34649 NEW

[Easy Installation](#)



Full-Width 92 cm

TH 34647

Width 92 cm ↑ 125 cm ↔ 92 cm

Anti-Mold

Note: 02 Please be sure to check p. 272.



Full-Width 92 cm

TH 34648

Width 92 cm ↑ 92.9 cm ↔ 92 cm

Anti-Mold



Full-Width 92.5 cm

TH 34649

Width 92.5 cm ↑ 80 cm ↔ 92.5 cm

Anti-Mold | Anti-Bacterial | Water Repellent

Note: 04 Please be sure to check p. 272.



TH 34651



TH 34652



TH 34650



TH 34650(1 scale: 10 cm)



TH 34652



TH 34652(1 scale: 10 cm)



TH 34651

Width 92 cm    ↓ 64.2 cm    ↔ 92 cm

Anti-Mold



TH 34653

Width 92 cm    ↓ 64.2 cm    ↔ 92 cm

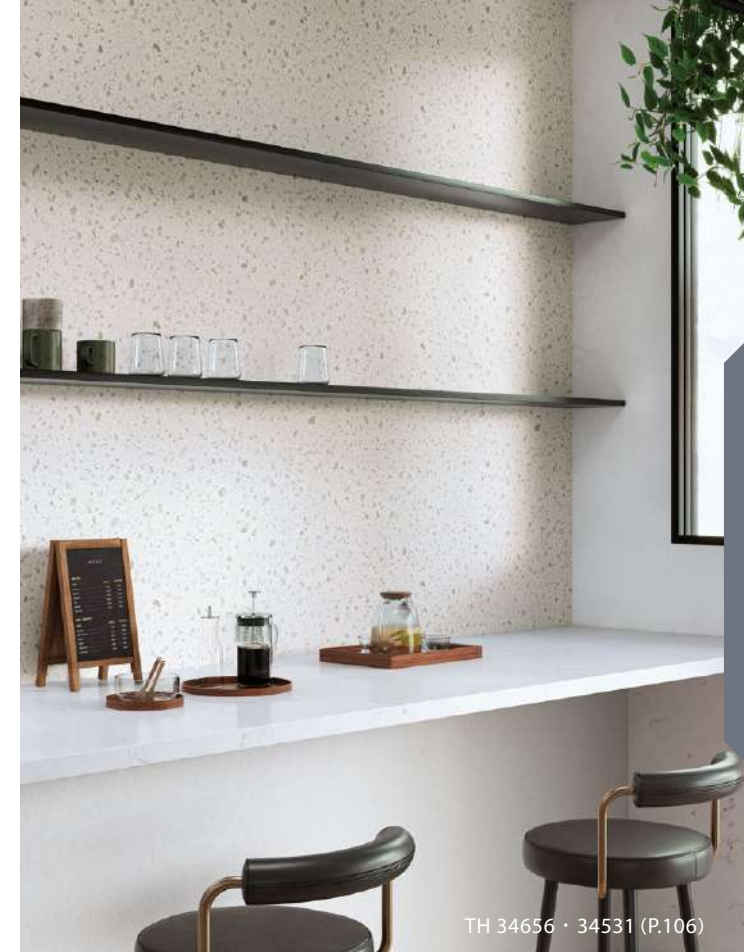
Anti-Mold | Anti-Bacterial



TH 34654

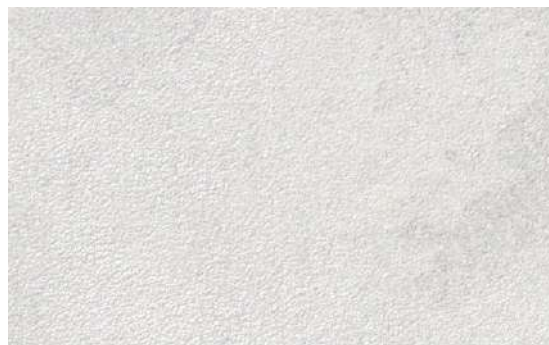


TH 34655 Flooring : IS-2082 (2023-2026 FLOOR TILE)



TH 34656 · 34531 (P.106)

Material



TH 34654 NEW



TH 34655 NEW



TH 34656



TH 34654(1 scale: 10 cm)



TH 34655(1 scale: 10 cm)



TH 34656(1 scale: 10 cm)

Width 92 cm ↑ 124 cm ↔ 92 cm

Anti-Mold

Notes: 04, 05 Please be sure to check p. 272.

Width 92 cm ↑ 64.1 cm ↔ 92 cm

Anti-Mold

Note: 05 Please be sure to check p. 272.

Width 92 cm ↑ 64.2 cm ↔ 92 cm

Anti-Mold



TH 34657



TH 34658



TH 34659

Width 92.5 cm ↑ 64.1 cm ↔ 92.5 cm

[Deodorant](#)

Anti-Mold | Anti-Bacterial | Deodorant

Notes: 02, 03 Please be sure to check p. 272.



TH 34660



TH 34661



TH 34662

Width 92.5 cm ↑61.3 cm ↔92.5 cm

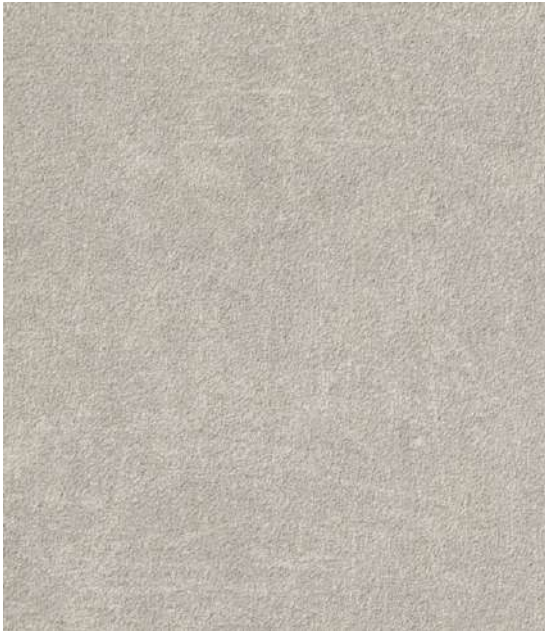
[Deodorant](#)

Anti-Mold | Anti-Bacterial | Deodorant



TH 34661

Material



TH 34663

Same-Pattern REATEC TC-5205



TH 34664

Same-Pattern REATEC TC-5204



TH 34665

Same-Pattern REATEC TC-5206

Width 93 cm ↓ 94 cm ↔ 93 cm ● 1/2 Drop

Anti-Mold

Notes: 04, 11 Please be sure to check p. 272.





TH 34666



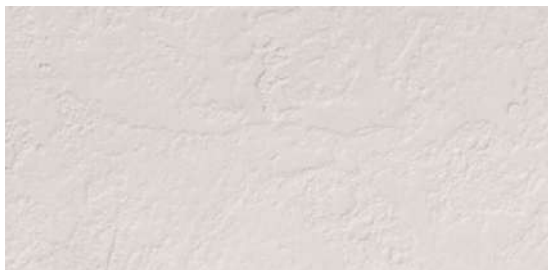
TH 34555 · 34313 (P.70)



TH 34666



Full-Width 92 cm  
TH 34667



TH 34667

Width 92 cm ↓ 64 cm ↔ 92 cm (Emboss Repeat)  
Anti-Mold



TH 34555 (P.109)



Full-Width 92.5 cm  
TH 34556



TH 34556 (P.109)

Width 92.5 cm ↓ 64.1 cm ↔ 92.5 cm  
**Super Durable**  
Anti-Mold | Anti-Bacterial | Anti-Scratch | Super Durable | Stain Prevention

Note: 07 Please be sure to check p. 272.



TH 34668



TH 34669



TH 34668 NEW



TH 34669

[Easy Installation](#)



TH 34670 NEW

[Easy Installation](#)



Full-Width 93 cm

TH 34668

Width 93 cm    ⇅ 125 cm    ⇅ 93 cm

Anti-Mold

Note: 05 Please be sure to check p. 272.



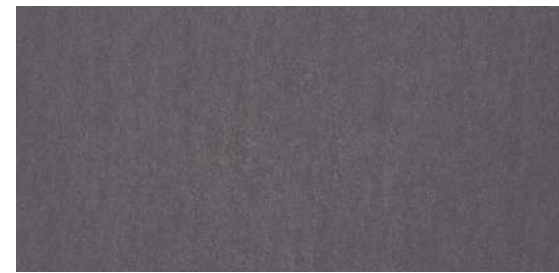
Full-Width 92 cm

TH 34669

Width 92 cm

Anti-Mold | Anti-Bacterial

Note: 04 Please be sure to check p. 272.

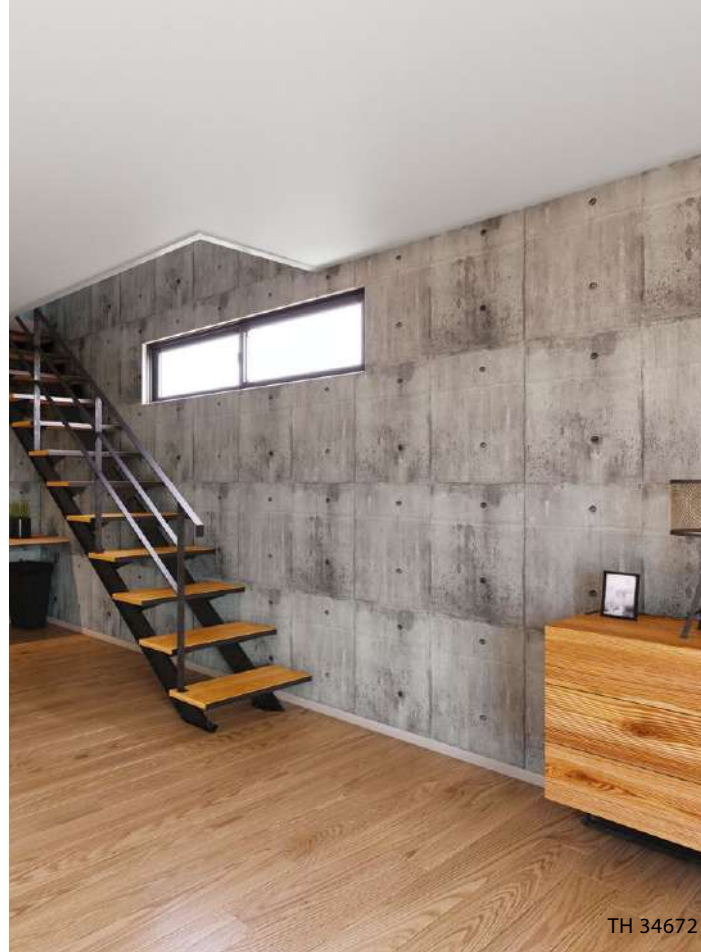


Full-Width 92 cm

TH 34670



TH 34671



TH 34672



TH 34673

Material



TH 34671



TH 34672



TH 34673



Full-Width 92 cm

TH 34671

Width 92 cm ↑93 cm ↔92 cm  
Anti-Mold



Full-Width 93 cm

TH 34672

Width 93 cm ↑125 cm ↔93 cm  
Anti-Mold

\*The positions and sizes of the tie-rod holes may vary within the repeat, as the design realistically reproduces the appearance of real concrete.



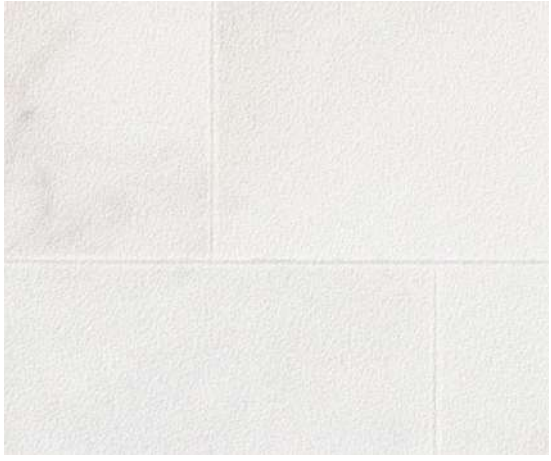
Full-Width 92 cm

TH 34673

Width 92 cm ↑93 cm ↔92 cm  
Anti-Mold



TH 34674



Full-Width 93 cm  
TH 34674

TH 34674

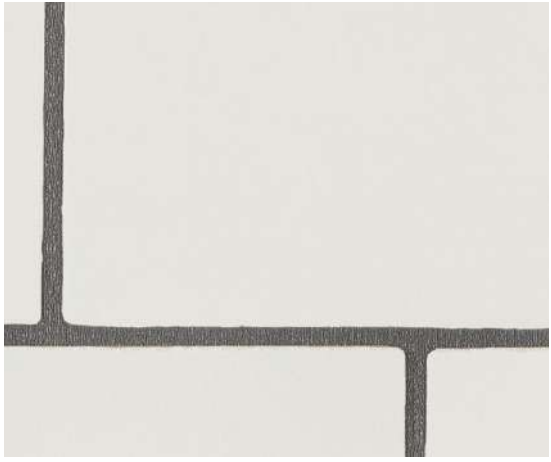
Width 93 cm ↓ 94 cm ↔ 93 cm

Anti-Mold

Notes: 03, 05 Please be sure to check p. 272.

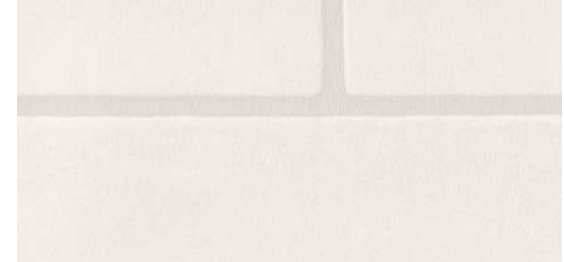


TH 34676



TH 34676(1 scale: 10 cm)

TH 34675



Width 92.5 cm ↓ 46.1 cm ↔ 92.5 cm  
Anti-Mold | Anti-Scratch  
Water Repellent

TH 34676



TH 34677

Width 92 cm ↓ 93 cm ↔ 92 cm

Anti-Mold | Anti-Scratch

Note: 05 Please be sure to check p. 272.



Full-Width 92 cm  
TH 34677



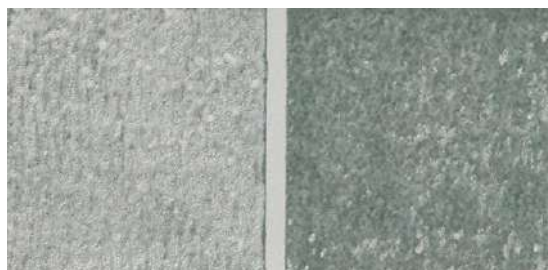
TH 34677



TH 34678 NEW



Full-Width 92 cm  
TH 34678



TH 34679 NEW

Width 92 cm ↓ 64.1 cm ↔ 92 cm

Anti-Mold

Notes: 02, 05

Please be sure to check p. 272.



TH 34679 · 34038 (P.8)



TH 34680



TH 34682



TH 34680



Full-Width 93 cm  
TH 34681



TH 34681

Width 93 cm    ↓ 94 cm    ↔ 93 cm

Anti-Mold

Notes: 02, 04    Please be sure to check p. 272.



TH 34682

Same-Pattern REATEC TD-4548



Full-Width 92.5 cm  
TH 34683



TH 34683

Same-Pattern REATEC TD-4549

Width 92.5 cm    ↓ 32 cm    ↔ 92.5 cm

Anti-Mold

Notes: 04, 11    Please be sure to check p. 272.



TH 34684



TH 34687



TH 34684 NEW



Full-Width 92.5 cm  
TH 34685



TH 34686



20 cm  
TH 34686



TH 34685 NEW



TH 34687

Width 92.5 cm    ↓55.5 cm    ↔46.4 cm  
Anti-Mold | Anti-Bacterial | Water Repellent  
Notes: 04, 05    Please be sure to check p. 272.

Width 92 cm  
Anti-Mold  
Notes: 03, 04    Please be sure to check p. 272.



TH 34688



TH 34689



TH 34690



TH 34688



TH 34689



TH 34690



Full-Width 92 cm

TH 34688

Width 92 cm ↓ 62 cm ↔ 92 cm  
Anti-Mold

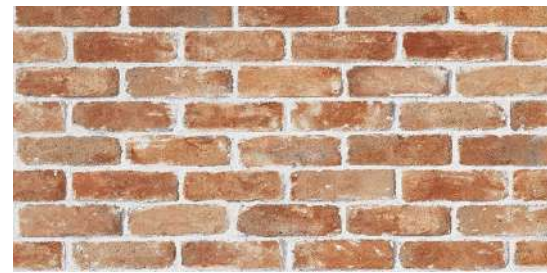


Full-Width 93 cm

TH 34689

Width 93 cm ↓ 47 cm ↔ 93 cm  
Anti-Mold

Note: 03 Please be sure to check p. 272.



Full-Width 93 cm

TH 34690

Width 93 cm ↓ 47 cm ↔ 93 cm  
Anti-Mold



TH 34691



TH 34692



TH 34693

Material



TH 34691



TH 34692



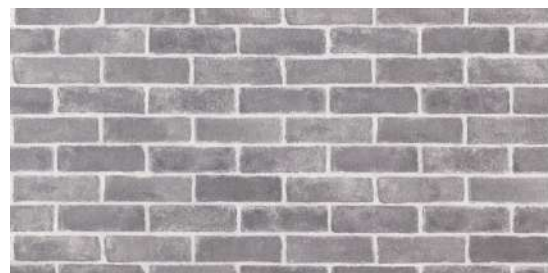
TH 34693



Full-Width 92 cm

TH 34691

Width 92 cm    ↑ 62 cm    ↔ 92 cm  
Anti-Mold | Anti-Scratch



Full-Width 93 cm

TH 34692

Width 93 cm    ↑ 60.5 cm    ↔ 93 cm  
Anti-Mold



Full-Width 93 cm

TH 34693

Width 93 cm    ↑ 60.6 cm    ↔ 93 cm  
Anti-Mold

Notes: 02, 04 Please be sure to check p. 272.

# Wood | PROGRESS WOOD

This wood grain wallpaper achieves an exceptional texture through a specialized printing process.

- Beautifully detailed, delicate wood grain pores
- A special vinyl wallpaper produced using the "Gloss & Matte Printing Process"
- A realistic wood grain texture created by interwoven glossy and matte prints
- All items in this series are available in the same designs as REATEC



PROGRESS WOOD



Conventional Wood Grain Wallpaper



TH 34705



TH 34705



**TH 34701** Oak Straight/Flat Grain  
Same-Pattern REATEC RW-4035

Width 92.5 cm ↓ 124 cm ↔ 92.5 cm

Anti-Mold

Notes: 02, 05, 11  
Please be sure to check p. 272.



**TH 34704** Ash Straight/Flat Grain  
Same-Pattern REATEC RW-4036

Width 92.5 cm ↓ 124 cm ↔ 92.5 cm

Anti-Mold

Notes: 02, 05, 11  
Please be sure to check p. 272.



**TH 34707** Maple Straight/Flat Grain  
Same-Pattern REATEC RW-5378

Width 92 cm ↓ 124 cm ↔ 92 cm

Anti-Mold

Notes: 02, 05, 11  
Please be sure to check p. 272.



**TH 34710** Walnut Straight/Flat Grain  
Same-Pattern REATEC RW-4052

Width 92 cm ↓ 124 cm ↔ 92 cm

Anti-Mold

Notes: 02, 05, 11  
Please be sure to check p. 272.



**TH 34702** Cherry Straight Grain  
Same-Pattern REATEC RW-5425

Width 92 cm ↓ 92.9 cm ↔ 92 cm

Anti-Mold

Notes: 02, 05, 11  
Please be sure to check p. 272.



**TH 34705** Cherry Straight Grain  
Same-Pattern REATEC RW-5426

Width 92 cm ↓ 92.9 cm ↔ 92 cm

Anti-Mold

Notes: 02, 05, 11  
Please be sure to check p. 272.



**TH 34708** Olive Ash Straight/Flat Grain  
Same-Pattern REATEC RW-5423

Width 92 cm ↓ 124 cm ↔ 92 cm

Anti-Mold

Notes: 02, 05, 11  
Please be sure to check p. 272.



**TH 34711** Walnut Straight/Flat Grain  
Same-Pattern REATEC RW-4090

Width 92.5 cm ↓ 124 cm ↔ 92.5 cm

Anti-Mold

Notes: 02, 05, 11  
Please be sure to check p. 272.



**TH 34703** Olive Ash Straight/Flat Grain  
Same-Pattern REATEC RW-5421

Width 92 cm ↓ 124 cm ↔ 92 cm

Anti-Mold

Notes: 02, 05, 11  
Please be sure to check p. 272.



**TH 34706** Elm Straight/Flat Grain  
Same-Pattern REATEC RW-5751

Width 92.5 cm ↓ 124 cm ↔ 92.5 cm

Anti-Mold

Notes: 02, 05, 11  
Please be sure to check p. 272.



**TH 34709** Walnut Straight/Flat Grain  
Same-Pattern REATEC RW-4096

Width 92 cm ↓ 124 cm ↔ 92 cm

Anti-Mold

Notes: 02, 05, 11  
Please be sure to check p. 272.



**TH 34712** Walnut Straight/Flat Grain  
Same-Pattern REATEC RW-5386

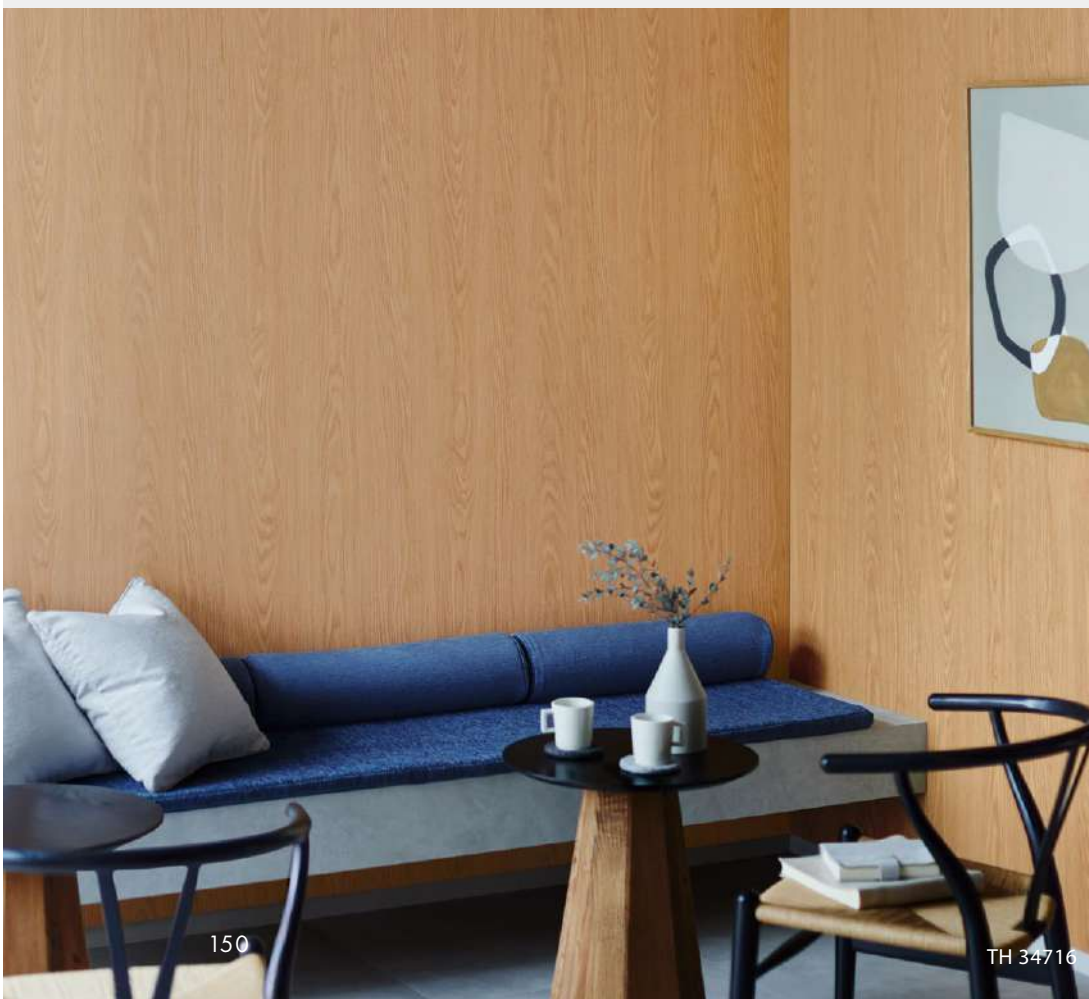
Width 93 cm ↓ 125 cm ↔ 93 cm

Anti-Mold

Notes: 02, 05, 11  
Please be sure to check p. 272.



TH 34714



TH 34716



**TH 34713** Oak Flat Grain  
Same-Pattern REATEC RW-5366

Width 92.5 cm ↓ 92.9 cm ↔ 92.5 cm  
Anti-Mold

Notes: 02, 05, 11  
Please be sure to check p. 272.



**TH 34716** Oak Straight/Flat Grain  
Same-Pattern REATEC RW-4068

Width 92.5 cm ↓ 124 cm ↔ 92.5 cm  
Anti-Mold

Notes: 02, 05, 11  
Please be sure to check p. 272.



**TH 34714** Cherry Straight/Flat Grain  
Same-Pattern REATEC RW-5752

Width 92.5 cm ↓ 124 cm ↔ 92.5 cm  
Anti-Mold

Notes: 02, 05, 11  
Please be sure to check p. 272.



**TH 34717** NEW Oak Straight/Flat Grain  
Same-Pattern REATEC TC-4257

Width 92 cm ↓ 124 cm ↔ 92 cm  
Anti-Mold

Notes: 04, 05, 11  
Please be sure to check p. 272.



**TH 34715** Cherry Straight/Flat Grain  
Same-Pattern REATEC RW-5753

Width 92.5 cm ↓ 124 cm ↔ 92.5 cm  
Anti-Mold

Notes: 02, 05, 11  
Please be sure to check p. 272.



**TH 34718** NEW Cherry Straight Grain  
Same-Pattern REATEC RW-4078

Width 92 cm ↓ 124 cm ↔ 92 cm  
Anti-Mold

Notes: 04, 05, 11  
Please be sure to check p. 272.



**TH 34719** Walnut Straight/Flat Grain  
Same-Pattern REATEC RW-4053

Width 92.5 cm ↓ 124 cm ↔ 92.5 cm

Anti-Mold

Notes: 02, 05, 11  
Please be sure to check p. 272.



**TH 34722** NEW Cherry Straight/Flat Grain  
Same-Pattern REATEC RW-5615

Width 92 cm ↓ 124 cm ↔ 92 cm

Anti-Mold

Notes: 04, 05, 11  
Please be sure to check p. 272.



**TH 34720** Cherry Straight Grain  
Same-Pattern REATEC RW-5427

Width 92 cm ↓ 92.9 cm ↔ 92 cm

Anti-Mold

Notes: 02, 05, 11  
Please be sure to check p. 272.



**TH 34723** Cherry Straight/Flat Grain  
Same-Pattern REATEC RW-5754

Width 92.5 cm ↓ 124 cm ↔ 92.5 cm

Anti-Mold

Notes: 02, 05, 11  
Please be sure to check p. 272.



**TH 34721** Iroko Straight Grain  
Same-Pattern REATEC RW-5379

Width 92 cm ↓ 124 cm ↔ 92 cm

Anti-Mold

Notes: 02, 05, 11  
Please be sure to check p. 272.



**TH 34724** Walnut Straight/Flat Grain  
Same-Pattern REATEC RW-4094

Width 92.5 cm ↓ 124 cm ↔ 92.5 cm

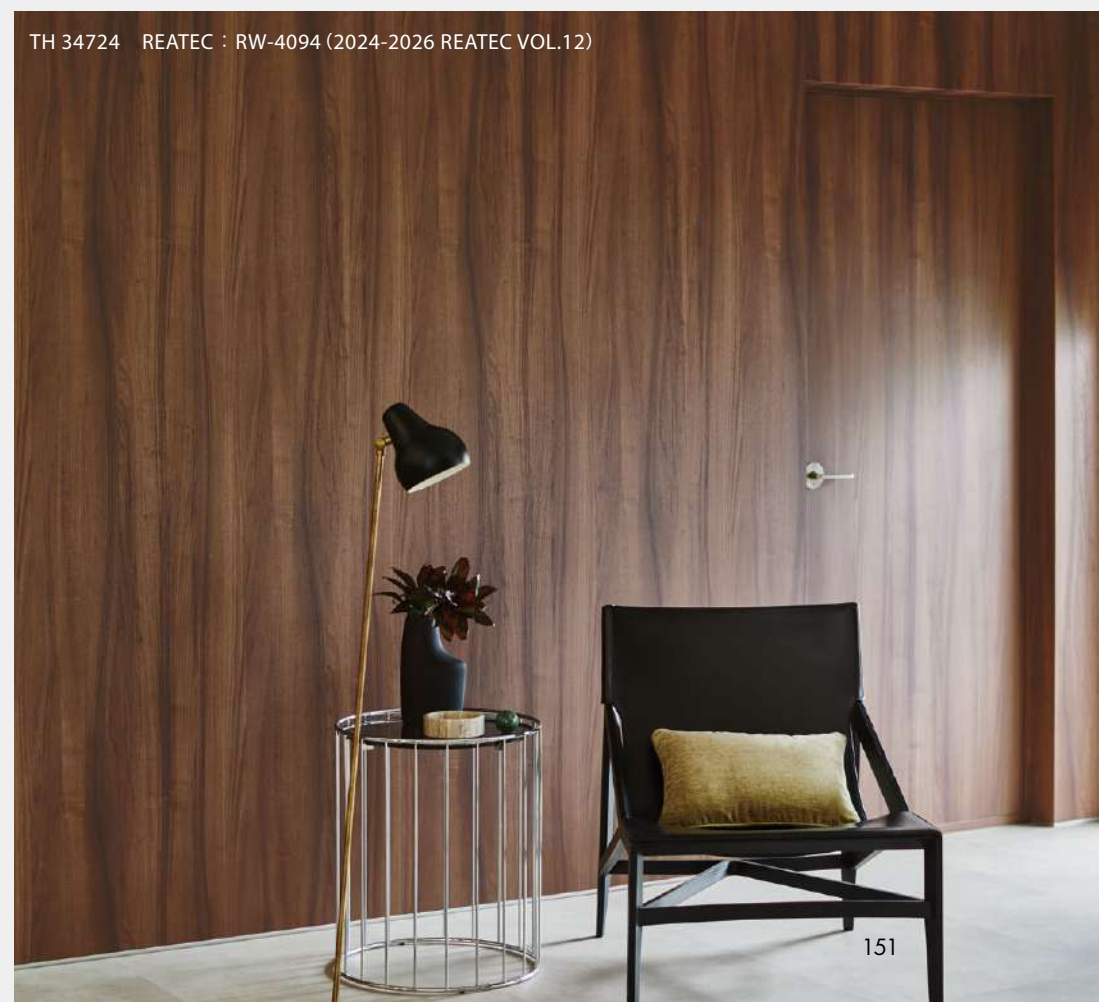
Anti-Mold

Notes: 02, 05, 11  
Please be sure to check p. 272.



**TH 34720** Trims : EGJ-416 (P.266)

\*The installation example photo uses trims. TH34720 features a wood grain design with no seams.



**TH 34724** REATEC : RW-4094 (2024-2026 REATEC VOL.12)