

Wood | Super Durable

EVAL BARRIER CLOTH

1. Highly Scratch Resistant

This wallpaper further enhances the durability of the "Film Stain Prevention - Barrier Type" through the durability of the EVAL film and its scratch-resistant surface structure.

2. Highly Impact Resistant

It demonstrates superior impact resistance compared to general vinyl wallpaper.

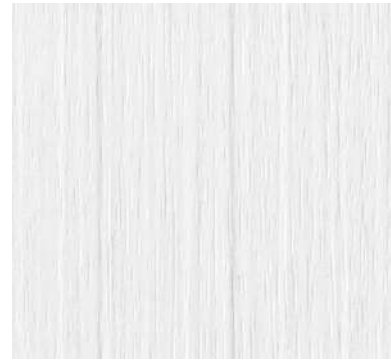
3. EVAL Film Barrier Function

The EVAL film offers strong resistance to stains and provides an expected deodorization effect.

Furthermore, its excellent chemical resistance and antibacterial properties also make maintenance effortless, helping to maintain a clean and hygienic environment.

*For details on the functions of the EVAL film, please refer to the function description for the Film Stain Prevention - Barrier Type on p. 92.

*The functional properties and test results described on this page are based solely on Japanese national standards or our own internal specifications, testing methods, and criteria.



TH 34725 Line-Wood Straight Grain
Same-Pattern REATEC TC-4167

Width 92 cm ↓ 93 cm ↔ 46.1 cm

Super Durable

Anti-Mold | Anti-Bacterial | Anti-Scratch
Super Durable | Stain Prevention

Notes: 05, 07, 11

Please be sure to check p. 272.



TH 34726 Oak Straight Grain

Width 92 cm ↓ 93 cm ↔ 46.1 cm

Super Durable

Anti-Mold | Anti-Bacterial | Anti-Scratch
Super Durable | Stain Prevention

Notes: 05, 07

Please be sure to check p. 272.



TH 34727 Oak Straight Grain

Width 92 cm ↓ 93 cm ↔ 46.1 cm

Super Durable

Anti-Mold | Anti-Bacterial | Anti-Scratch
Super Durable | Stain Prevention

Notes: 05, 07

Please be sure to check p. 272.



TH 34728 NEW Oak Straight Grain
Same-Pattern REATEC RW-5638

Width 92 cm ↓ 93 cm ↔ 92 cm

Super Durable

Anti-Mold | Anti-Bacterial | Anti-Scratch
Super Durable | Stain Prevention

Notes: 05, 07, 11

Please be sure to check p. 272.



TH 34729 Walnut Straight Grain
Same-Pattern REATEC TC-5069

Width 92 cm ↓ 93 cm ↔ 92 cm

Super Durable

Anti-Mold | Anti-Bacterial | Anti-Scratch
Super Durable | Stain Prevention

Notes: 05, 07, 11

Please be sure to check p. 272.



TH 34730 Cherry Straight/Flat Grain

Width 92 cm ↓ 93 cm ↔ 92 cm

Super Durable

Anti-Mold | Anti-Bacterial | Anti-Scratch
Super Durable | Stain Prevention

Notes: 05, 07

Please be sure to check p. 272.





TH 34731 NEW Oak Straight Grain
Same-Pattern REATEC RW-4048

Width 92 cm ↓93 cm ↔92 cm

Super Durable

Anti-Mold | Anti-Bacterial | Anti-Scratch
Super Durable | Stain Prevention

Notes: 05, 07, 11
Please be sure to check p. 272.



TH 34732 Oak Straight/Flat Grain
Same-Pattern REATEC TC-5656

Width 92 cm ↓93 cm ↔92 cm

Super Durable

Anti-Mold | Anti-Bacterial | Anti-Scratch
Super Durable | Stain Prevention

Notes: 05, 07, 11
Please be sure to check p. 272.



TH 34733 Primavera Straight Grain
Same-Pattern REATEC TC-4198

Width 92 cm ↓93 cm ↔92 cm

Super Durable

Anti-Mold | Anti-Bacterial | Anti-Scratch
Super Durable | Stain Prevention

Notes: 05, 07, 11
Please be sure to check p. 272.



TH 34734 Cherry Straight/Flat Grain

Width 92 cm ↓93 cm ↔92 cm

Super Durable

Anti-Mold | Anti-Bacterial | Anti-Scratch
Super Durable | Stain Prevention

Notes: 05, 07
Please be sure to check p. 272.



TH 34735 Oak Straight/Flat Grain
Same-Pattern REATEC TC-5657

Width 92 cm ↓93 cm ↔92 cm

Super Durable

Anti-Mold | Anti-Bacterial | Anti-Scratch
Super Durable | Stain Prevention

Notes: 05, 07, 11
Please be sure to check p. 272.



TH 34736 NEW Oak Straight Grain
Same-Pattern REATEC RW-4064

Width 92 cm ↓93 cm ↔92 cm

Super Durable

Anti-Mold | Anti-Bacterial | Anti-Scratch
Super Durable | Stain Prevention

Notes: 05, 07, 11
Please be sure to check p. 272.



TH 34737 NEW Oak Straight Grain
Same-Pattern REATEC RW-4069

Width 92 cm ↓93 cm ↔92 cm

Super Durable

Anti-Mold | Anti-Bacterial | Anti-Scratch
Super Durable | Stain Prevention

Notes: 05, 07, 11
Please be sure to check p. 272.



TH 34738 Walnut Straight Grain
Same-Pattern REATEC TC-5070

Width 92 cm ↓93 cm ↔92 cm

Super Durable

Anti-Mold | Anti-Bacterial | Anti-Scratch
Super Durable | Stain Prevention

Notes: 05, 07, 11
Please be sure to check p. 272.



TH 34739 Line-Wood Straight Grain
Same-Pattern REATEC TC-4336

Width 92 cm ↓93 cm ↔46.1 cm

Super Durable

Anti-Mold | Anti-Bacterial | Anti-Scratch
Super Durable | Stain Prevention

Notes: 05, 07, 11
Please be sure to check p. 272.



TH 34740 Walnut Straight Grain
Same-Pattern REATEC TC-5071

Width 92 cm ↓93 cm ↔92 cm

Super Durable

Anti-Mold | Anti-Bacterial | Anti-Scratch
Super Durable | Stain Prevention

Notes: 05, 07, 11
Please be sure to check p. 272.



TH 34741 Oak Straight Grain

Width 92 cm ↓93 cm ↔46.1 cm

Super Durable

Anti-Mold | Anti-Bacterial | Anti-Scratch
Super Durable | Stain Prevention

Notes: 05, 07
Please be sure to check p. 272.



TH 34742 NEW Oak Straight Grain
Same-Pattern REATEC RW-4119

Width 92 cm ↓93 cm ↔92 cm

Super Durable

Anti-Mold | Anti-Bacterial | Anti-Scratch
Super Durable | Stain Prevention

Notes: 05, 07, 11
Please be sure to check p. 272.

Wood | Easy Installation Wallpaper

1. Substantial and thick wallpaper
2. Texture that helps minimize the visibility of substrate unevenness

This product meets our in-house standards for thickness and concealment of substrate unevenness.

It can be used with confidence for projects and renovations where a high-quality finish is essential.



The wallpaper is installed over a substrate with tape applied to simulate unevenness

Easy installation wallpaper provides excellent concealment of substrate unevenness, minimizing its visibility.

- *The appearance may vary depending on the viewing angle and environmental factors such as the lighting source and how the light hits the surface.
- *The level of concealment of substrate unevenness differs depending on the product.
- *The functional properties and test results described on this page are based solely on Japanese national standards or our own internal specifications, testing methods, and criteria.



TH 34743 Oak Straight/Flat Grain [Easy Installation](#)

Width 93 cm ↓ 125 cm ↔ 93 cm

Anti-Mold

Notes: 03, 04 Please be sure to check p. 272.



TH 34746 Oak Straight Grain [Easy Installation](#)

Width 93 cm ↓ 125 cm ↔ 93 cm

Anti-Mold

Notes: 03, 04 Please be sure to check p. 272.



TH 34744 Ash Straight/Flat Grain [Easy Installation](#)

Width 93 cm ↓ 125 cm ↔ 93 cm

Anti-Mold

Notes: 03, 04 Please be sure to check p. 272.



TH 34747 Oak Flat Grain [Easy Installation](#)

Width 93 cm ↓ 125 cm ↔ 93 cm

Anti-Mold

Notes: 03, 04 Please be sure to check p. 272.



TH 34745 Oak Straight Grain [Easy Installation](#)

Width 93 cm ↓ 125 cm ↔ 93 cm

Anti-Mold

Notes: 03, 04 Please be sure to check p. 272.



TH 34748 **NEW** Oak Straight/Flat Grain [Easy Installation](#)

Width 92.5 cm ↓ 92 cm ↔ 92.5 cm

Anti-Mold

Note: 04 Please be sure to check p. 272.



TH 34749 Oak Straight/Flat Grain [Easy Installation](#)

Width 93 cm ↓ 125 cm ↔ 93 cm

Anti-Mold

Notes: 03, 04 Please be sure to check p. 272.



TH 34752 NEW Oak Straight/Flat Grain [Easy Installation](#)

Same-Pattern REATEC RW-5649
Same-Pattern Floor Tile WD-2065

Width 92.5 cm ↓ 92 cm ↔ 92.5 cm

Anti-Mold

Notes: 04, 11 Please be sure to check p. 272.



TH 34755 Walnut Straight/Flat Grain [Easy Installation](#)

Width 93 cm ↓ 125 cm ↔ 93 cm

Anti-Mold

Notes: 03, 04 Please be sure to check p. 272.



TH 34758 Walnut Straight/Flat Grain [Easy Installation](#)

Width 93 cm ↓ 125 cm ↔ 93 cm

Anti-Mold

Notes: 03, 04 Please be sure to check p. 272.



TH 34750 Walnut Straight/Flat Grain [Easy Installation](#)

Width 93 cm ↓ 125 cm ↔ 93 cm

Anti-Mold

Notes: 03, 04 Please be sure to check p. 272.



TH 34753 NEW Walnut Straight/Flat Grain [Easy Installation](#)

Same-Pattern REATEC RW-5647
Same-Pattern Floor Tile WD-2066

Width 92.5 cm ↓ 92 cm ↔ 92.5 cm

[Anti-Virus](#)

Anti-Mold | Anti-Bacterial | Anti-Virus

Notes: 04, 11 Please be sure to check p. 272.



TH 34756 NEW Walnut Straight/Flat Grain [Easy Installation](#)

Width 92.5 cm ↓ 64.1 cm ↔ 92.5 cm

[Anti-Virus](#)

Anti-Mold | Anti-Bacterial | Anti-Virus

Note: 04 Please be sure to check p. 272.



TH 34759 NEW Walnut Straight/Flat Grain [Easy Installation](#)

Width 92.5 cm ↓ 92 cm ↔ 92.5 cm

[Anti-Virus](#)

Anti-Mold | Anti-Bacterial | Anti-Virus

Note: 04 Please be sure to check p. 272.



TH 34751 Walnut Straight/Flat Grain [Easy Installation](#)

Width 93 cm ↓ 125 cm ↔ 93 cm

Anti-Mold

Notes: 03, 04 Please be sure to check p. 272.



TH 34754 Walnut Straight/Flat Grain [Easy Installation](#)

Width 93 cm ↓ 125 cm ↔ 93 cm

Anti-Mold

Notes: 03, 04 Please be sure to check p. 272.



TH 34757 NEW Walnut Straight/Flat Grain [Easy Installation](#)

Width 92.5 cm ↓ 92 cm ↔ 92.5 cm

[Anti-Virus](#)

Anti-Mold | Anti-Bacterial | Anti-Virus

Note: 04 Please be sure to check p. 272.



TH 34760 NEW Walnut Straight/Flat Grain [Easy Installation](#)

Same-Pattern REATEC RW-5629

Width 92 cm ↓ 125 cm ↔ 92 cm

Anti-Mold

Notes: 03, 04, 11
Please be sure to check p. 272.

Wood



TH 34761 NEW Cypress Straight Grain

Same-Pattern REATEC TC-5055

Width 92 cm ↓ 124 cm ↔ 92 cm

Anti-Mold

Notes: 04, 05, 11 Please be sure to check p. 272.



TH 34762 NEW Chestnut Straight/Flat Grain

Width 92 cm ↓ 124 cm ↔ 92 cm

Anti-Mold

Notes: 04, 05 Please be sure to check p. 272.



Full-Width 92 cm
TH 34763

TH 34763 **NEW**

Cherry Blossom Straight Grain

Width 92 cm ↓ 125 cm ↔ 92 cm

Anti-Mold

Note: 05 Please be sure to check p. 272.



TH 34763



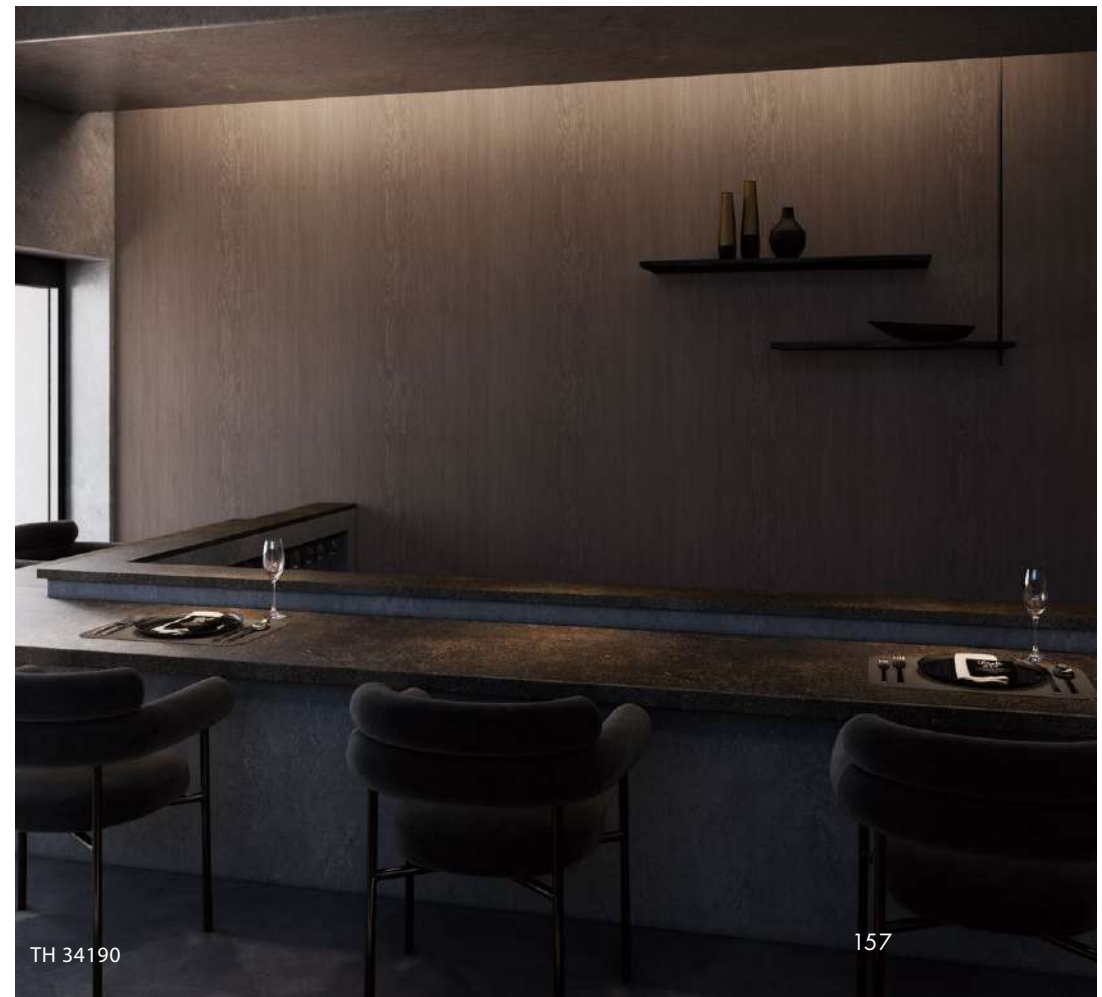
Full-Width 92 cm
TH 34190

TH 34190 (P.41) **NEW**

Width 92 cm ↓ 64.1 cm ↔ 92 cm

Anti-Mold | Anti-Bacterial | Water Repellent

Notes: 04, 05 Please be sure to check p. 272.



TH 34190

Products with item numbers shown in blue are also listed on other pages.

Wood



Full-Width 92 cm
TH 34764

TH 34764 NEW

Same-Pattern REATEC RW-5627

Eucalyptus Straight Grain

Width 92 cm ↓ 125 cm ↔ 92 cm

Anti-Mold

Notes: 03, 04, 05, 11 Please be sure to check p. 272.



TH 34764



Full-Width 92 cm
TH 34765

TH 34765 NEW

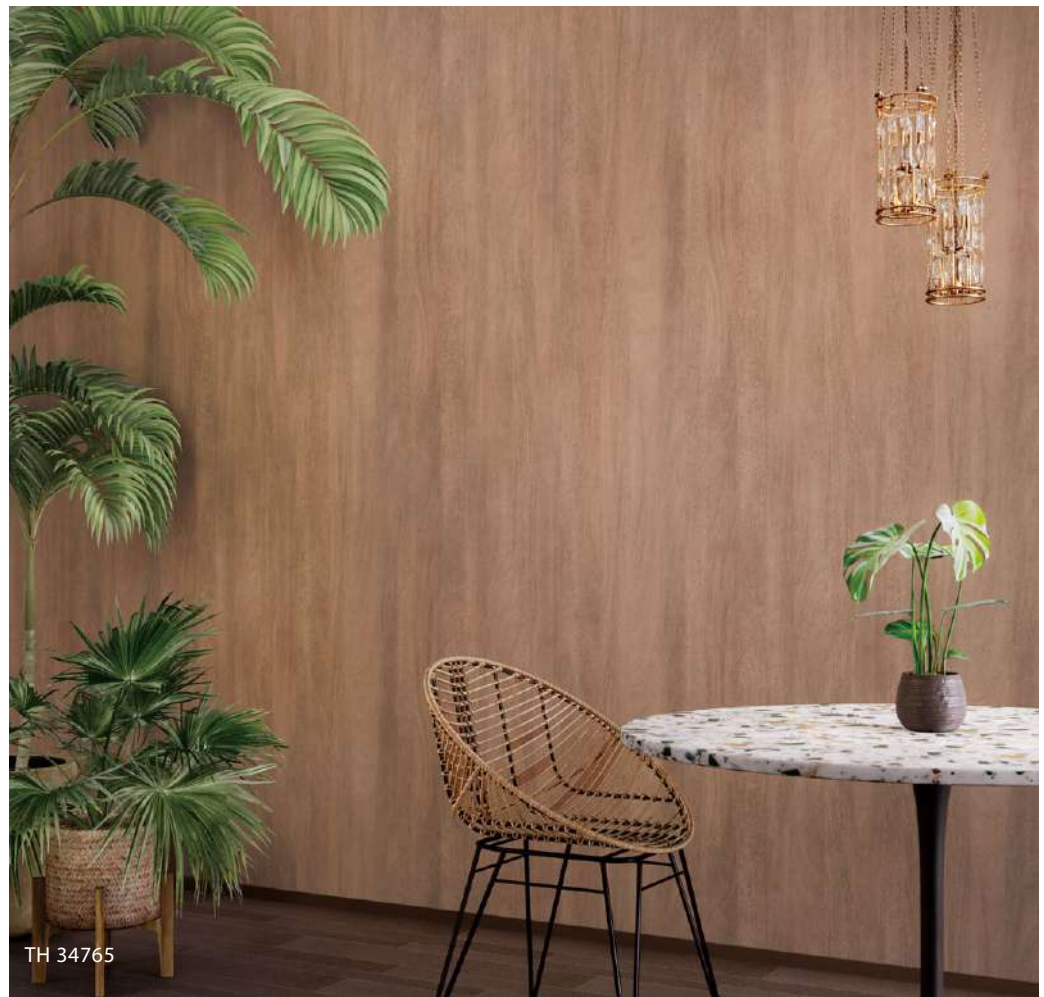
Same-Pattern REATEC RW-5631

Mango Straight/Flat Grain

Width 92 cm ↓ 125 cm ↔ 92 cm

Anti-Mold

Notes: 03, 05, 11 Please be sure to check p. 272.



TH 34765



TH 34766 NEW

Width 92 cm ↓ 125 cm ↔ 92 cm

Anti-Mold | Anti-Scratch

Note: 05 Please be sure to check p. 272.



Full-Width 92 cm
TH 34766



TH 34767 NEW

Width 92 cm ↓ 124 cm ↔ 92 cm

Anti-Mold

Notes: 04, 05 Please be sure to check p. 272.



Full-Width 92 cm
TH 34767



TH 34768 NEW



TH 34768(1 scale: 10 cm)



TH 34769 NEW



TH 34770 NEW

Width 92 cm ↓ 46.5 cm ↔ 92 cm

Anti-Mold

Notes: 04, 05 Please be sure to check p. 272.



TH 34771

Width 93 cm ↓ 125 cm ↔ 93 cm ● 1/2 Drop
Anti-Mold

Note: 03 Please be sure to check p. 272.



Full-Width 93 cm
TH 34771



TH 34771 · 34333 (P.77)



TH 34772

Width 92.5 cm ↓ 124 cm ↔ 92.5 cm
Anti-Mold | Anti-Scratch

Note: 04 Please be sure to check p. 272.



Full-Width 92.5 cm
TH 34772



TH 34772 · 34490 (P.99)



TH 34773



TH 34774 (Horizontal Installation)



TH 34775



TH 34773



TH 34774

Same-Pattern REATEC TC-5117



TH 34775



Full-Width 93 cm

TH 34773

Width 93 cm ↓ 125 cm ↔ 93 cm
Anti-Mold



Full-Width 92 cm

TH 34774

Width 92 cm ↓ 124 cm ↔ 92 cm
Anti-Mold | Anti-Scratch

Note: 11 Please be sure to check p. 272.



Full-Width 92 cm

TH 34775

Width 92 cm ↓ 123.9 cm ↔ 92 cm ● 1/2 Drop
Anti-Mold



TH 34776



TH 34777 · 34661 (P.137)



TH 34778

Wood



TH 34776



TH 34777



TH 34778 NEW

[Easy Installation](#)



Full-Width 92 cm

TH 34776

Width 92 cm ↓ 123.8 cm ↔ 92 cm

Anti-Mold

*Although the print pattern depicts diagonally laid wooden planks, the wallpaper surface features a vertical wood grain embossing. Depending on the lighting environment, the vertical embossing may appear more visible; however, this is not a product defect.



Full-Width 93 cm

TH 34777

Width 93 cm ↓ 125 cm ↔ 93 cm

Anti-Mold

Note: 04 Please be sure to check p. 272.



Full-Width 92.5 cm

TH 34778

Width 92.5 cm ↓ 92 cm ↔ 92.5 cm

Anti-Mold | Anti-Bacterial | Water Repellent

Wood



TH 34779



Full-Width 92 cm

TH 34779

Width 92 cm ↓124 cm ↔92 cm Board Width: Approx. 11.6 cm
Anti-Mold | Anti-Scratch



TH 34780



Full-Width 92 cm

TH 34780

Width 92 cm ↓124 cm ↔92 cm
Anti-Mold



TH 34781 NEW



Full-Width 92 cm

TH 34781

Width 92 cm ↓124 cm ↔92 cm
Anti-Mold

Notes: 04, 05 Please be sure to check p. 272.

Wood



164

TH 34779 (Horizontal Installation)



TH 34780



TH 34781



TH 34782



TH 34783

[Easy Installation](#)



TH 34784



Full-Width 93 cm

TH 34782

Width 93 cm ↓ 125 cm ↔ 93 cm
Anti-Mold



Full-Width 93 cm

TH 34783

Width 93 cm ↓ 125 cm ↔ 93 cm Board Width: Approx. 9.3 cm
Anti-Mold

Notes: 03, 04 Please be sure to check p. 272.



Full-Width 92 cm

TH 34784

Width 92 cm ↓ 123.9 cm ↔ 92 cm
Anti-Mold

Note: 05 Please be sure to check p. 272.

Wood



TH 34782 · 34790 (P.167)



TH 34783 · 34502 (P.100)



TH 34784

Wood



TH 34785

Same-Pattern REATEC TC-5121



TH 34786

Same-Pattern REATEC TC-5122



TH 34787

Same-Pattern REATEC TC-5124

Width 93 cm ⇅ 94 cm ⇄ 93 cm

Anti-Mold | Anti-Scratch

Note: 11 Please be sure to check p. 272.



Full-Width 93 cm
TH 34786



TH 34785



Wood



TH 34788

[Easy Installation](#)



TH 34789

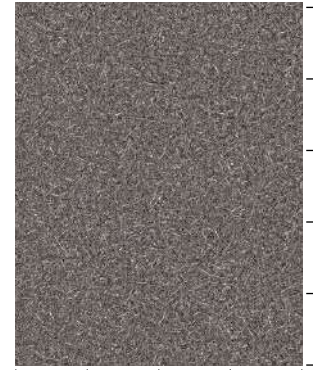
[Easy Installation](#)



TH 34790

[Easy Installation](#)

Width 92.5 cm ↑ 23 cm ↔ 46.3 cm
Anti-Mold



TH 34790(1 scale: 10 cm)

Wood

Japanesque



TH 34801 NEW



TH 34805 NEW



TH 34802 NEW



TH 34806 NEW



TH 34803 NEW



TH 34807 NEW



TH 34804 NEW



TH 34808 NEW

Width 92 cm

[Urethane Coating](#)

Anti-Mold | Anti-Bacterial | Anti-Scratch | Urethane Coating | Water Repellent

Notes: 02, 05 Please be sure to check p. 272.



TH 34809



TH 34813



TH 34810



TH 34814



TH 34811



TH 34815



TH 34812



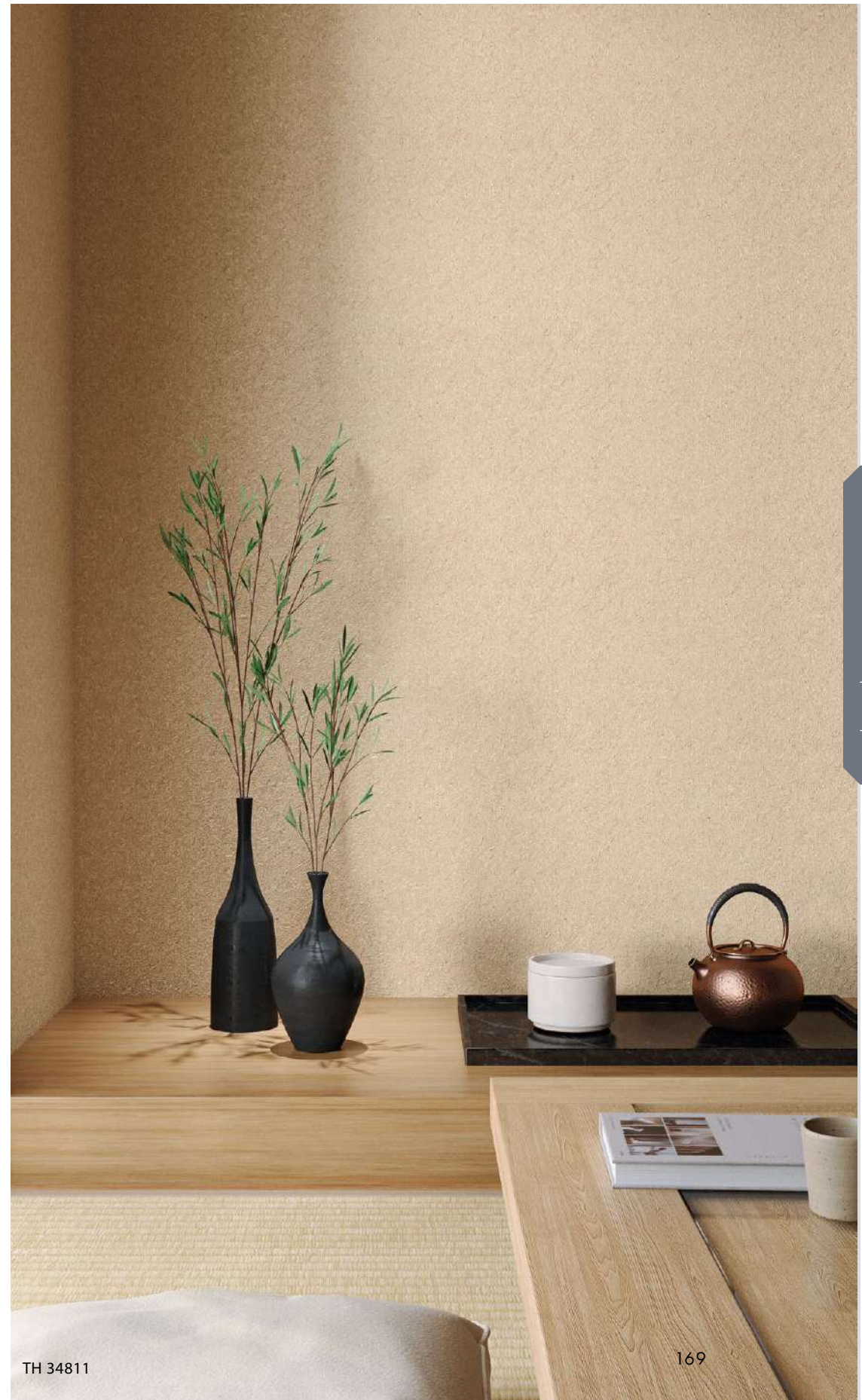
TH 34816

Width 92 cm ↓ 32 cm ↔ 46 cm

[Urethane Coating](#)

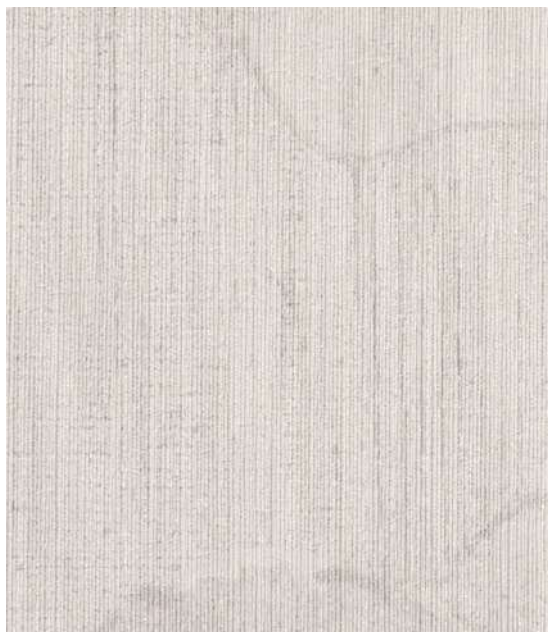
Anti-Mold | Anti-Scratch | Urethane Coating

Note: 01 Please be sure to check p. 272.



TH 34811

Japanesque



TH 34817 NEW



TH 34818 NEW

Width 92 cm ↓ 90 cm ↔ 92 cm ● 1/2 Drop
Anti-Mold

Note: 05 Please be sure to check p. 272.



Full-Width 92 cm

TH 34817



TH 34818



TH 34820



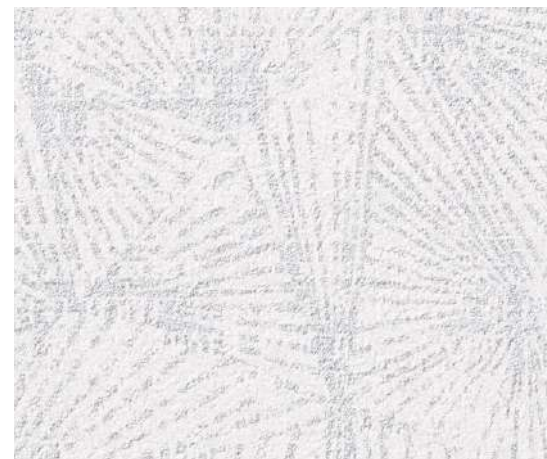
TH 34822



TH 34819 NEW



Full-Width 92 cm
TH 34819



TH 34821 NEW



TH 34821 (1 scale: 10 cm)



TH 34820 NEW

Width 92 cm ↓ 60 cm ↔ 46 cm
Anti-Mold | Anti-Bacterial



TH 34822 NEW

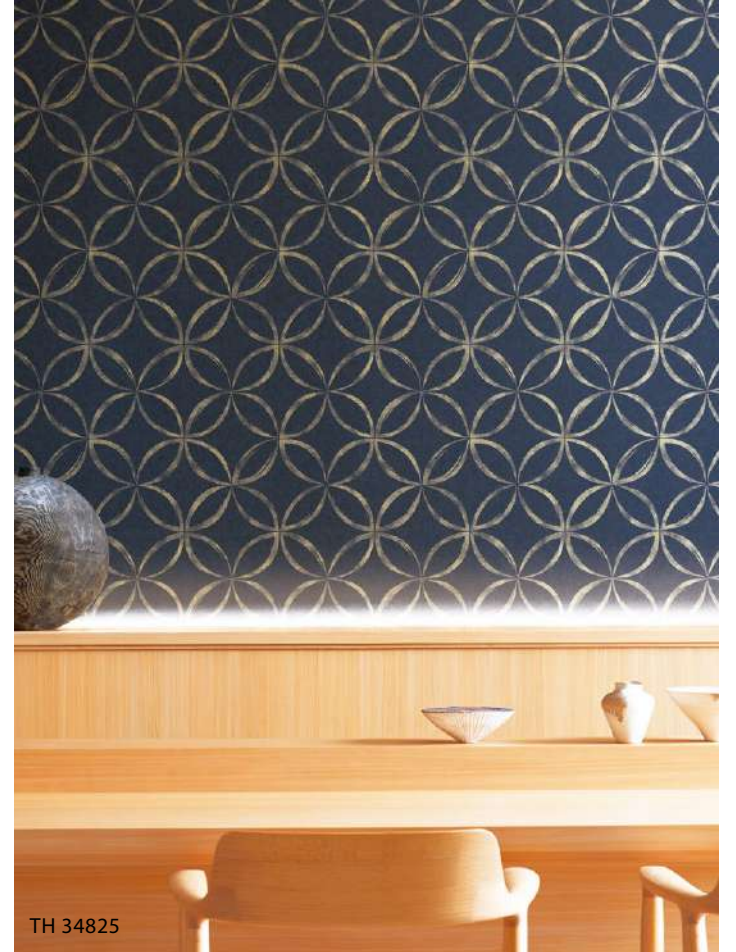
Width 92.5 cm ↓ 46.1 cm ↔ 92.5 cm
Anti-Mold | Anti-Bacterial | Water Repellent
Note: 04 Please be sure to check p. 272.



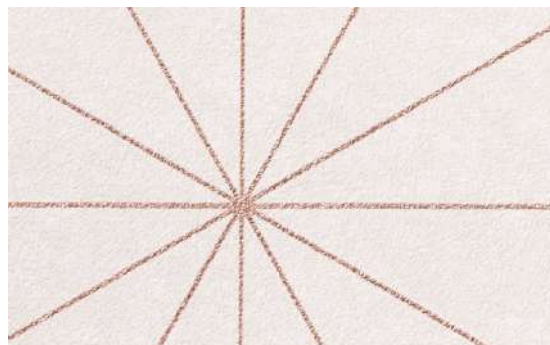
TH 34823 · 34858 (P.179)



TH 34824



TH 34825



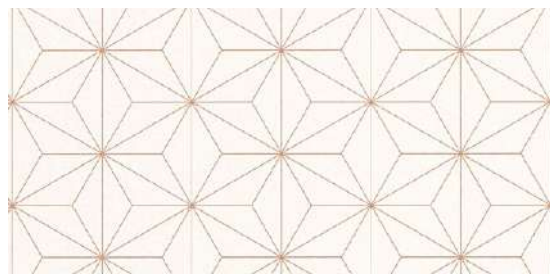
TH 34823 NEW



TH 34824



TH 34825



TH 34823(1 scale: 10 cm)



Full-Width 92 cm

TH 34824



Full-Width 92.5 cm

TH 34825

Width 92.5 cm ↓30.5 cm ↔92.5 cm

Anti-Mold | Anti-Bacterial | Anti-Scratch | Water Repellent

Note: 05 Please be sure to check p. 272.

Width 92 cm ↓64.2 cm ↔46.2 cm

Anti-Mold

Width 92.5 cm ↓46 cm ↔46.3 cm

Anti-Mold | Anti-Bacterial | Water Repellent



TH 34826



TH 34827



TH 34828



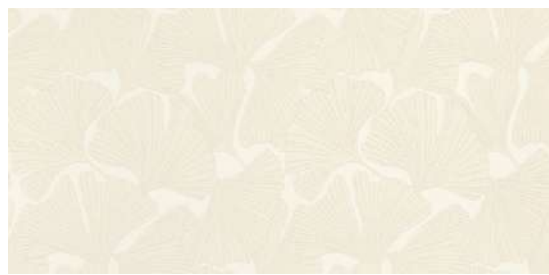
TH 34826 NEW



TH 34827



TH 34828 NEW



Full-Width 92 cm

TH 34826



Full-Width 92.5 cm

TH 34827



Full-Width 92 cm

TH 34828

Width 92 cm ↓64.2 cm ↔46.1 cm

Anti-Mold

Note: 05 Please be sure to check p. 272.

Width 92.5 cm ↓64.2 cm ↔92.5 cm

Anti-Mold

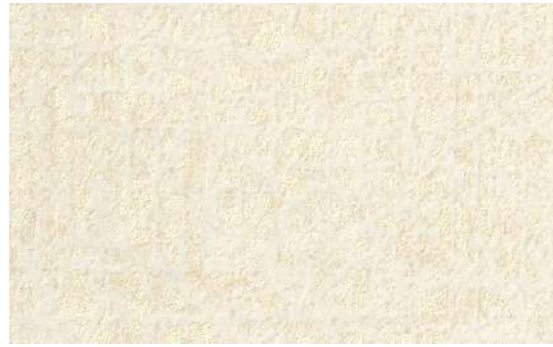
Width 92 cm ↓64.1 cm ↔92 cm

[Urethane Coating](#)

Anti-Mold | Anti-Bacterial | Anti-Scratch | Urethane Coating
Water Repellent

Note: 05 Please be sure to check p. 272.

Japanesque



TH 34829

Width 92.5 cm ↓32.1 cm ↔46.3 cm
Anti-Mold



TH 34829(1 scale: 10 cm)



TH 34831

Width 92 cm ↓46 cm ↔46 cm
Anti-Mold | Anti-Scratch



TH 34831(1 scale: 10 cm)



TH 34830

Width 92.5 cm ↓46.1 cm ↔46.3 cm
Anti-Mold

*TH 34830 is not a flat-pressed pattern.



TH 34830(1 scale: 10 cm)



TH 34832

Width 92.5 cm ↓23 cm ↔46.3 cm
Anti-Mold



TH 34832(1 scale: 10 cm)





TH 34833 NEW



TH 34835 (1 scale: 10 cm)



TH 34834



TH 34835

Width 92 cm ↑ 64.2 cm ↔ 92 cm

Foil Pattern Size Approx. 15.4 cm

Anti-Mold

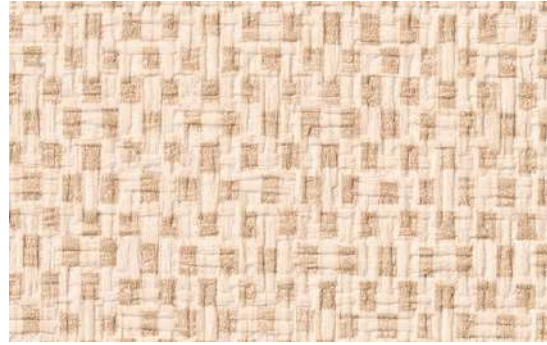
Note: 05 Please be sure to check p. 272.

Japanesque



TH 34836

[Easy Installation](#)



TH 34837

[Easy Installation](#)



TH 34838

[Easy Installation](#)

Width 92 cm ↓ 23 cm ↔ 46 cm

Anti-Mold



TH 34839



TH 34841



TH 34843

Width 92 cm ↓ 36.8 cm ↔ 46.2 cm

Anti-Mold

Note: 04 Please be sure to check p. 272.



TH 34840

Width 92 cm ↓ 30 cm ↔ 30.8 cm

Anti-Mold



TH 34842

Width 92.5 cm ↓ 19.5 cm ↔ 18.5 cm

Anti-Mold

Note: 02 Please be sure to check p. 272.



TH 34844(1 scale: 10 cm)

TH 34844 NEW

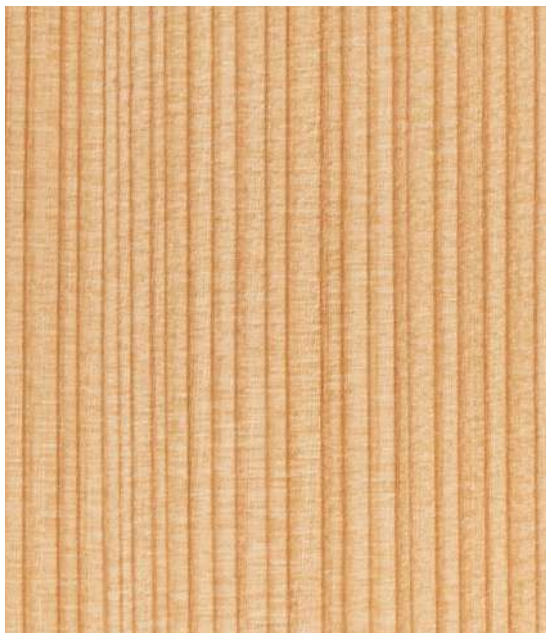
Width 92 cm ↓32 cm ↔92 cm

Anti-Mold

Note: 04 Please be sure to check p. 272.



TH 34844 · 34604 (P.118) · 34730 (P.152)



Full-Width 93 cm
TH 34845

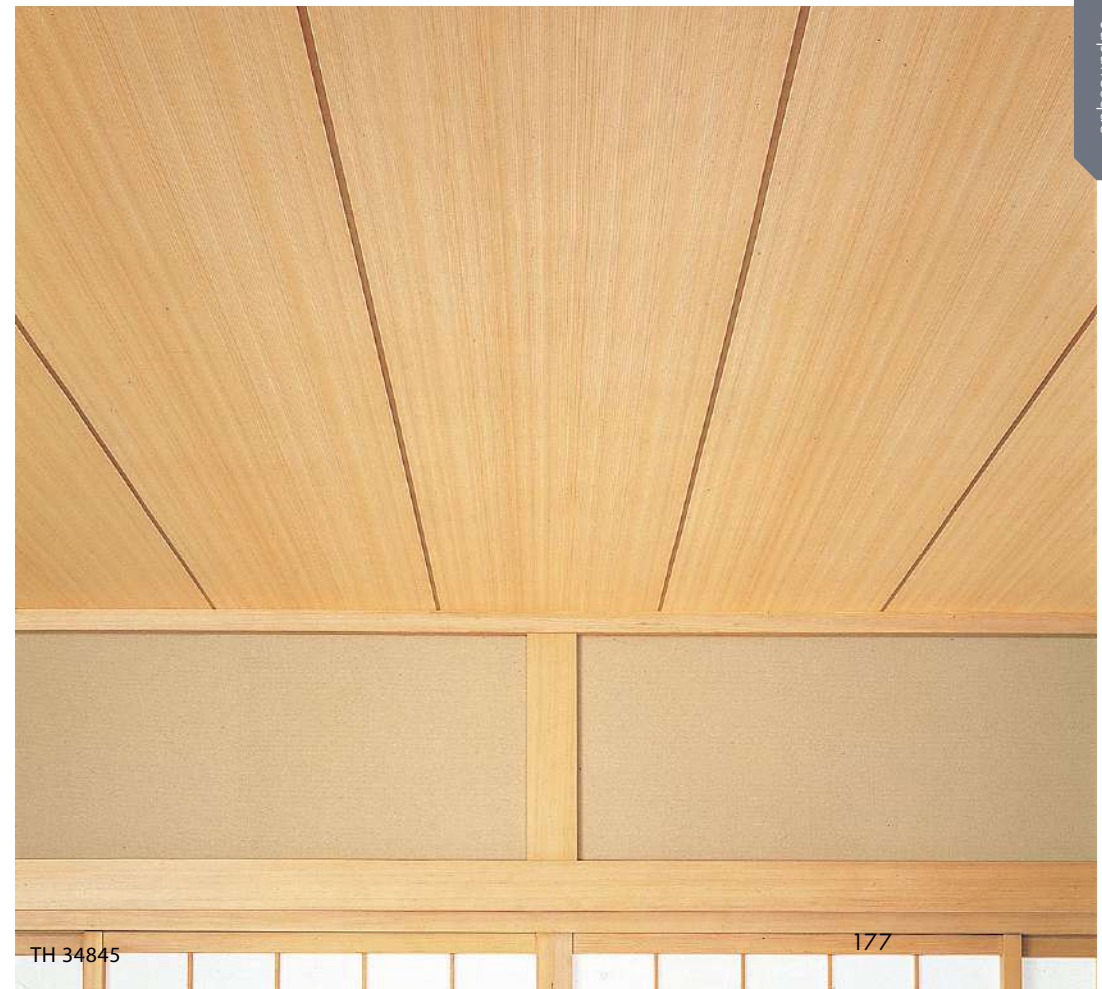
TH 34845

Cedar Straight Grain

Width 93 cm ↓78.8 cm ↔46.5 cm

Board Width: Approx. 45.5 cm Seam Width: Approx. 1 cm

Anti-Mold | Anti-Scratch



TH 34845

Diatomite

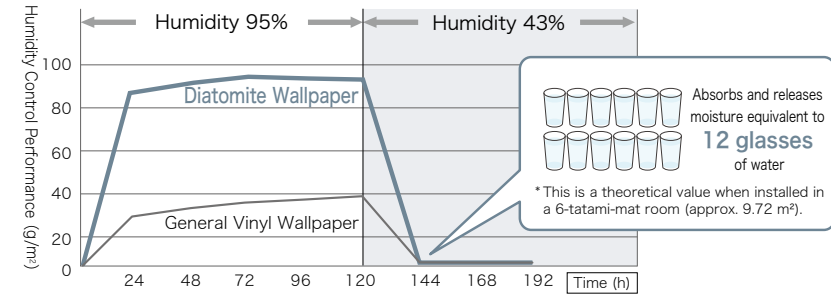
1. Material Texture

This material is characterized by a texture unique to natural materials.

2. Humidity Control Effect

It controls indoor humidity by absorbing moisture in the summer and releasing moisture in the winter, thereby reducing condensation and mold growth.

■ Humidity Control Test



[Test Method] The wallpaper is applied to a plasterboard to create a test specimen. The weight change is measured after moisture absorption at 30° C and 95% humidity, followed by moisture release at 27° C and 43% humidity.

*The above test results are measured values and are not guaranteed values.

*Actual effectiveness may vary depending on environmental and climatic conditions.

*The functional properties and test results described on this page are based solely on Japanese national standards or our own internal specifications, testing methods, and criteria.

What is Diatomite?

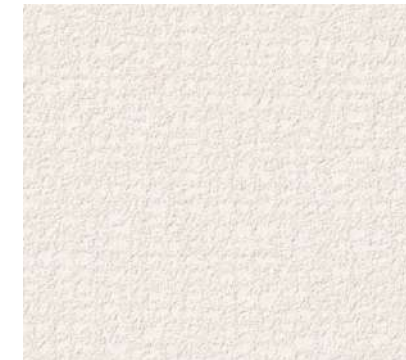
Diatomite is a sedimentary deposit formed from the fossilized shells of diatoms, a type of plant algae, which accumulated on the bottoms of oceans or lakes.

Its porous structure, containing countless micro-pores, provides well-known humidity control and deodorizing effects.

In Japan, it has long been primarily used as a plaster material for both interior and exterior walls.



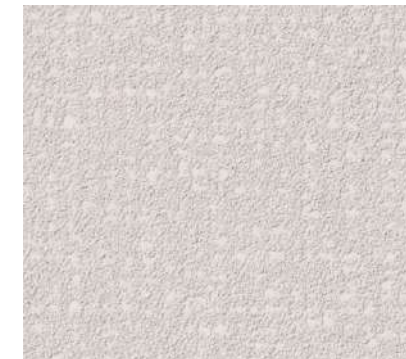
TH 34851



TH 34854



TH 34852



TH 34855



TH 34853



TH 34856

Width 92 cm
 Material Classification: Inorganic Wallpaper (Aggregate)
 Anti-Mold | Humidity Control
 Note: 08 Please be sure to check p. 272.

Width 92 cm
 Material Classification: Inorganic Wallpaper
 Anti-Mold | Humidity Control
 Notes: 02, 08 Please be sure to check p. 272.



TH 34857



TH 34860



TH 34863 NEW



TH 34246 (P.57)



TH 34858



TH 34861



TH 34864 NEW



TH 34248 (P.57)



TH 34859



TH 34862



TH 34865



TH 34249 (P.57)

Width 92 cm
Material Classification: Inorganic Wallpaper (Aggregate)
Anti-Mold | Humidity Control
Note: 08 Please be sure to check p. 272.

MEGUReWALL / JOU

Width 100 cm
Material Classification: Other (Aggregate)
Anti-Mold | Humidity Control
Note: 10
Please be sure to check p. 272.



Japanese

Marble

Marble-Particle Scatter Coated Wallpaper



TH 34866(1 scale: 10 cm)

TH 34866 NEW

Width 92.5 cm ↓ 64 cm ↔ 92.5 cm

Material Classification: Inorganic Wallpaper

Anti-Mold

Note: 08 Please be sure to check p. 272.



TH 34866 · 34123 (P.23)



TH 34867(1 scale: 10 cm)

TH 34867 NEW

Width 92.5 cm ↓ 64 cm ↔ 92.5 cm

Material Classification: Inorganic Wallpaper

Anti-Mold

Note: 08 Please be sure to check p. 272.



TH 34867 · 34679 (P.143) Trims : EGJ-416 (P.266)



TH 34868(1 scale: 10 cm)

TH 34868

Width 92.5 cm ↓64 cm ↔92.5 cm
 Material Classification: Inorganic Wallpaper
 Anti-Mold
 Note: 08 Please be sure to check p. 272.



TH 34868



Full-Width 92.5 cm
 TH 34869

TH 34869

Width 92.5 cm ↓64 cm ↔92.5 cm
 Material Classification: Inorganic Wallpaper
 Anti-Mold
 Note: 08 Please be sure to check p. 272.



TH 34869 · 34851 (P.178)