

Material-Based Wallpaper

A special wallpaper collection that enhances spaces through the natural textures of soil, paper, and textiles

Material-Based Wallpaper
Soil, Paper and Textile



TSUCHI

“TSUCHI (soil)” is a material well suited to Japan’s humid climate, offering breathability and heat retention. This wallpaper features the unique texture of natural raw materials while also presenting a modern impression.

THB1902



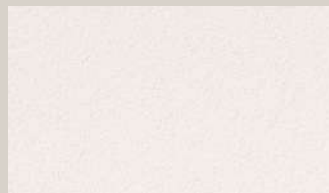
THB 1901

Inorganic Wallpaper (Aggregate)

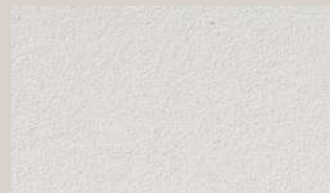
Width 92 cm

Anti-Mold | Humidity Control

Note: 17 Please be sure to check p. 273.



THB 1902



THB 1903



THB 1904



THB 1907



THB 1905



THB 1906



THB 1907



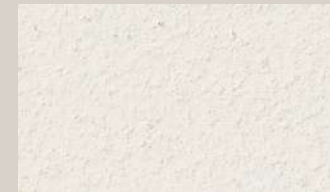
THB 1908

Inorganic Wallpaper (Shell Powder)

Width 92 cm ↓ 73.8 cm ↔ 92 cm

Anti-Mold

Note: 17 Please be sure to check p. 273.



THB 1909



THB 1910

Inorganic Wallpaper (Aggregate)

Width 92 cm

Anti-Mold | Deodorant | Humidity Control

Note: 17 Please be sure to check p. 273.



THB 1911



THB 1912

Inorganic Wallpaper

Width 92 cm ↑73.7 cm ↔92 cm ●Random Match

Anti-Mold | Humidity Control

Note: 17 Please be sure to check p. 273.

SHIFU

“SHIFU (paper weave)” created by weaving thread-like Washi (traditional Japanese paper).

Its appeal lies in the rich texture of the material, showing varied expressions through subtle shading produced by dyeing. Although it has been crafted since the Edo period, this material is full of potential and harmonizes beautifully with Western-style interiors as well.



THB 1913



THB 1915



THB 1914

Textile Wallpaper

Width 92 cm

Note: 16 Please be sure to check p. 273.



Material-Based Wallpaper

KAMI

“KAMI (paper)” is a material that has always been familiar and close to our daily lives.

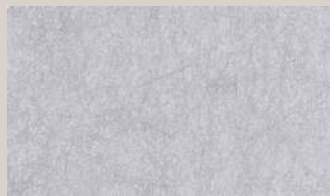
Lightweight yet durable, it captivates many people with its deeply expressive texture.



THB 1916



THB 1918



THB 1917

Paper Wallpaper (Direct Fleece)

Width 92 cm

Anti-Mold

Note: 12 Please be sure to check p. 272.



THB 1919



THB 1921



THB 1920

Paper Wallpaper (Awa Washi)

Width 92 cm

Note: 13 Please be sure to check p. 272.



THB 1917

Lynn Inkoop ▶ SANTA&COLE / DORICA / <https://lynnbelys.com>



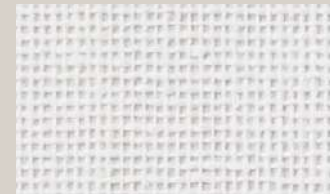
THB 1920



THB 1922

ORI

“ORI (textile)” wallpaper that envelops a space with a sophisticated presence and a soft, gentle ambience. Said to have its roots in shoji-gami (shoji screen paper) and fusuma-gami (sliding door paper), this material has been part of Japanese life for centuries. The passion and craftsmanship of the artisans are infused into every warp and weft thread woven together to the rhythms of a loom.



THB 1922

Textile Wallpaper

Width 92 cm

Note: 14 Please be sure to check p. 272.



THB 1923



THB 1925 · 1926

WOHL HÜTTE / ► WOHL HÜTTE / / Tou arm chair black type / <https://wohl-hutte.com>

THB 1924



THB 1926



THB 1925

Textile Wallpaper

Width 92 cm

Note: 14 Please be sure to check p. 272.

HARDWALL

Wallpaper with excellent Surface Strength, Easy Maintenance, and reduced Seam Gaps

1. Highly Resistant to Scratches and Stains

The special resin surface coating provides outstanding surface strength and easy maintenance.

2. Minimal Shrinkage and Reduced Seam Gaps

Using fleece as the base material ensures excellent dimensional stability and workability. It reduces seam gaps and features minimal curling when applying adhesive.

3. Same-Pattern Lineup with REATEC

A lineup of products is available in the same patterns as REATEC, allowing you to select the most suitable one for each application.

■ Surface Strength Test

	Textile Texture		Wood Grain Texture	
	HARDWALL	Anti-Scratch Wallpaper	HARDWALL	Anti-Scratch Wallpaper
Result	◎	○	◎	△
Enlarged Photo				

[Test Method]
Set the wallpaper on the Gakushin-Type Rubbing Tester. Adjust the load on the rubbing element to 300 g and rub the wallpaper 300 reciprocating cycles.

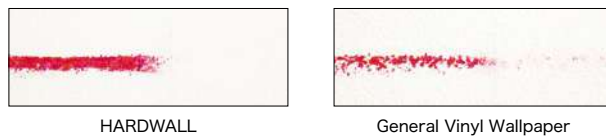
[Evaluation Method]
Evaluate the degree of surface scratching.
◎: No change observed
○: Surface scratches observed
△: Tearing observed

	Textile Texture		Wood Grain Texture	
	HARDWALL	Anti-Scratch Wallpaper	HARDWALL	Anti-Scratch Wallpaper
Result	◎	○	◎	△
Appearance Photo				
Enlarged Photo				

[Test Method]
Set the corner trim with the wallpaper applied on the Gakushin-Type Rubbing Tester. Secure a metal nut to the rubbing element, place it on the corner trim, adjust the load to 500 g, and rub the wallpaper 500 reciprocating cycles.

[Evaluation Method]
Evaluate the degree of surface scratching.
◎: No change observed
○: Surface scratches observed
△: Tearing observed

■ Stain Removal Performance Comparison



[Test Method]
Crayon marks applied to the wallpaper surface and then wiped off using a neutral detergent.

*The above test results are based on our in-house testing method and do not guarantee that the product will remain free from scratches or stains.
*The functional properties and test results described on this page are based solely on Japanese national standards or our own internal specifications, testing methods, and criteria. We have not conducted any testing based on the standards, testing methods, or criteria of other countries or regions where the product may be sold or used.



HF 3101 · TH 34304 (P.70)



HF 3029 (P.251)

Item Number List

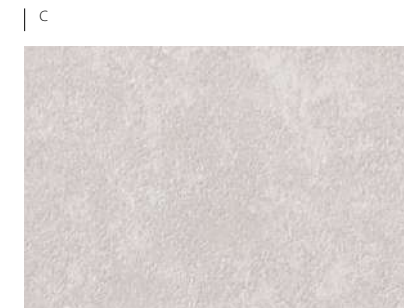
Item No.	Pattern Name	Wood Grain	Page	Row/Column
HF 3001	Line-Wood	Straight Grain	P.250	A-1
HF 3002	Line-Wood	Straight Grain	P.250	C-1
HF 3004	Primavera	Straight Grain	P.250	A-3
HF 3005	Zebrawood	Straight Grain	P.250	B-2
HF 3006	Walnut	Straight/Flat Grain	P.250	C-2
HF 3012	Walnut	Flat Grain	P.251	A-4
HF 3013	Walnut	Straight/Flat Grain	P.250	D-4
HF 3015	Walnut	Flat Grain	P.251	D-3
HF 3016	Cherry	Straight/Flat Grain	P.251	B-4
HF 3018	Oak	Straight/Flat Grain	P.251	C-4
HF 3019	Zebrawood	Straight Grain	P.250	B-4
HF 3020	Line-Wood	Straight Grain	P.250	A-4
HF 3021	Oak	Straight Grain	P.250	D-1
HF 3022	Silkwood	Straight/Flat Grain	P.251	A-1
HF 3023	Oak	Straight Grain	P.251	B-1
HF 3024	Oak	Straight/Flat Grain	P.251	D-1
HF 3025	Cherry	Straight/Flat Grain	P.251	C-1
HF 3026	Cherry	Straight Grain	P.251	B-2
HF 3027	Cherry	Straight Grain	P.251	A-2
HF 3028	Cherry	Straight/Flat Grain	P.251	D-2
HF 3029	Cherry	Straight/Flat Grain	P.251	B-3
HF 3037	Stone	—	P.249	B-1
HF 3038	Stone	—	P.249	B-2
HF 3039	Stone	—	P.249	A-1
HF 3040	Stone	—	P.249	A-4
HF 3041	Cherry	Straight Grain	P.251	C-2
HF 3042	Sycamore	Straight Grain	P.250	B-1
HF 3043	Cherry	Straight Grain	P.251	C-3
HF 3044	Primavera	Straight Grain	P.250	C-4
HF 3045	Zebrawood	Straight Grain	P.250	D-2
HF 3068	Walnut	Straight/Flat Grain	P.250	A-2
HF 3072	Oak	Straight/Flat Grain	P.251	A-3
HF 3080	Oak	Straight Grain	P.251	D-4
HF 3101	Stone	—	P.249	C-1
HF 3102	Stone	—	P.249	A-3
HF 3103	Rust	—	P.249	B-4
HF 3104	Rust	—	P.249	C-4
HF 3113	Ash	Straight Grain	P.250	B-3
HF 3119	Stone	—	P.249	A-2
HF 3120	Stone	—	P.249	B-3
HF 3121	Stone	—	P.249	C-2
HF 3122	Stone	—	P.249	C-3
HF 3123	Oak	Straight Grain	P.250	C-3
HF 3124	Oak	Straight/Flat Grain	P.250	D-3



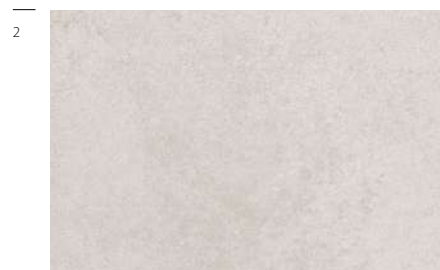
HF 3039 Stone
 ↓ 64.1 cm ↔ 46.1 cm



HF 3037 Stone
 ↓ 93 cm ↔ 92 cm



HF 3101 Stone
 ↓ 64 cm ↔ 92 cm



HF 3119 NEW Stone
 ↓ 64.1 cm ↔ 46.1 cm



HF 3038 Stone
 ↓ 93 cm ↔ 92 cm



HF 3121 NEW Stone
 ↓ 64 cm ↔ 92 cm



HF 3102 Stone
 ↓ 64 cm ↔ 92 cm



HF 3120 NEW Stone
 ↓ 64.1 cm ↔ 46.1 cm



HF 3122 NEW Stone
 ↓ 64 cm ↔ 92 cm



HF 3040 Stone
 ↓ 64.1 cm ↔ 46.1 cm



HF 3103 Rust
 ↓ 32 cm ↔ 92 cm
 Same-Pattern REATEC TD-4548



HF 3104 Rust
 ↓ 32 cm ↔ 92 cm
 Same-Pattern REATEC TD-4549

Width 92 cm
 Anti-Mold | Anti-Scratch
 Notes: 11, 19 Please be sure to check pp. 272 and 273.

HARDWALL

HARDWALL

A



HF 3001 Line-Wood Straight Grain
 ↓93 cm ↔46 cm
 Same-Pattern REATEC TC-4167

B



HF 3042 Sycamore Straight Grain
 ↓93 cm ↔92 cm
 Same-Pattern REATEC TC-4178

C



HF 3002 Line-Wood Straight Grain
 ↓93 cm ↔46 cm
 Same-Pattern REATEC TC-4181

D



HF 3021 Oak Straight Grain
 ↓93 cm ↔46 cm
 Same-Pattern REATEC TC-4174

2



HF 3068 Walnut Straight/Flat Grain
 ↓93 cm ↔92 cm



HF 3005 Zebrawood Straight Grain
 ↓93 cm ↔92 cm
 Same-Pattern REATEC TC-4244



HF 3006 Walnut Straight/Flat Grain
 ↓93 cm ↔92 cm



HF 3045 Zebrawood Straight Grain
 ↓93 cm ↔92 cm
 Same-Pattern REATEC TC-4235

3



HF 3004 Primavera Straight Grain
 ↓93 cm ↔92 cm
 Same-Pattern REATEC TC-4198



HF 3113 Ash Straight Grain
 ↓93 cm ↔92 cm
 Same-Pattern REATEC TC-5062



HF 3123 NEW Oak Straight Grain
 ↓93 cm ↔46 cm



HF 3124 NEW Oak Straight/Flat Grain
 ↓93 cm ↔92 cm

4



HF 3020 Line-Wood Straight Grain
 ↓93 cm ↔46 cm
 Same-Pattern REATEC TC-4336



HF 3019 Zebrawood Straight Grain
 ↓93 cm ↔92 cm



HF 3044 Primavera Straight Grain
 ↓93 cm ↔92 cm
 Same-Pattern REATEC TC-4324

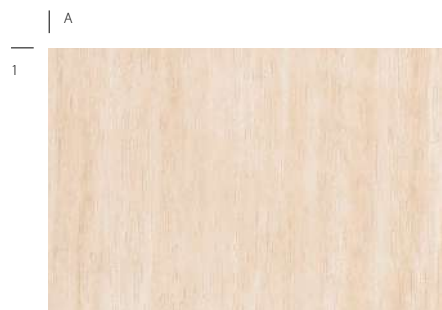


HF 3013 Walnut Straight/Flat Grain
 ↓93 cm ↔92 cm
 Same-Pattern REATEC TC-4307

Width 92 cm

Anti-Mold | Anti-Scratch

Notes: 11, 19 Please be sure to check pp. 272 and 273.



HF 3022 Silkwood Straight/Flat Grain
 ↓93 cm ↔92 cm



HF 3023 Oak Straight Grain
 ↓93 cm ↔46.1 cm
 Same-Pattern REATEC TC-4222



HF 3025 Cherry Straight/Flat Grain
 ↓93 cm ↔92 cm



HF 3024 Oak Straight/Flat Grain
 ↓93 cm ↔92 cm



HF 3027 Cherry Straight Grain
 ↓93 cm ↔92 cm
 Same-Pattern REATEC TC-4256



HF 3026 Cherry Straight Grain
 ↓93 cm ↔92 cm



HF 3041 Cherry Straight Grain
 ↓93 cm ↔92 cm
 Same-Pattern REATEC TC-4280



HF 3028 Cherry Straight/Flat Grain
 ↓93 cm ↔92 cm



HF 3072 Oak Straight/Flat Grain
 ↓93 cm ↔92 cm



HF 3029 Cherry Straight/Flat Grain
 ↓93 cm ↔92 cm



HF 3043 Cherry Straight Grain
 ↓93 cm ↔92 cm
 Same-Pattern REATEC TC-4272



HF 3015 Walnut Flat Grain
 ↓93 cm ↔92 cm
 Same-Pattern REATEC TC-4308



HF 3012 Walnut Flat Grain
 ↓93 cm ↔92 cm
 Same-Pattern REATEC TC-4310



HF 3016 Cherry Straight/Flat Grain
 ↓93 cm ↔92 cm



HF 3018 Oak Straight/Flat Grain
 ↓93 cm ↔46.1 cm
 Same-Pattern REATEC TC-4327



HF 3080 Oak Straight Grain
 ↓93 cm ↔46.1 cm

Width 92 cm

Anti-Mold | Anti-Scratch

Notes: 11, 19 Please be sure to check pp. 272 and 273.

HARDWALL

STRONGLASS

Wallpaper with superior Surface Strength and Impact Resistance using Glass Fiber

1. Superior Surface Strength and Impact Resistance

Due to the characteristics of glass fiber, this wallpaper offers outstanding abrasion resistance and impact resistance on the surface, making it highly scratch-resistant. It is suitable for common areas such as corridors in commercial facilities, hotels, and medical institutions.

2. High Tensile Strength and Tear Resistance

Compared to general vinyl wallpaper, it provides high tensile strength and excellent tear resistance. This helps reduce cracking and allows the beautiful finish to be maintained for an extended period of time.

3. Less Visible Substrate Unevenness

Because the base material is glass fiber, it is less likely to reveal minor substrate unevenness and offers excellent concealment of substrate unevenness. This makes it ideal for renovation projects.



Image



External Corner Abrasion Resistance Test

Test Conditions	White Cloth: 500 cycles	Sandpaper #1000: 50 cycles
STRONGLASS	Grade 5	Grade 5
Super Durable	Grade 3	Grade 3
General Vinyl Wallpaper	Grade 3	Grade 3

[Test Method]

Set the corner trim with the wallpaper applied on the Gakushin-Type Rubbing Tester II. Attach a white cloth or sandpaper to the rubbing element with a 200 g load. Evaluate the condition of the wallpaper surface after rubbing it for the specified number of reciprocating cycles (120 mm travel distance at 30 times/min).

[Evaluation Criteria]

- Grade 5: No visible change upon visual inspection
- Grade 4: Minor surface scratches are observed, but no large tears to the surface layer are observed
- Grade 3: Tears to the surface layer are clearly observed
- Grade 2: The surface layer is torn, and the backing material (such as paper) is clearly observed (tear length less than 1 cm)
- Grade 1: The surface layer is torn, and the backing material (such as paper) is clearly observed (tear length 1 cm or more)

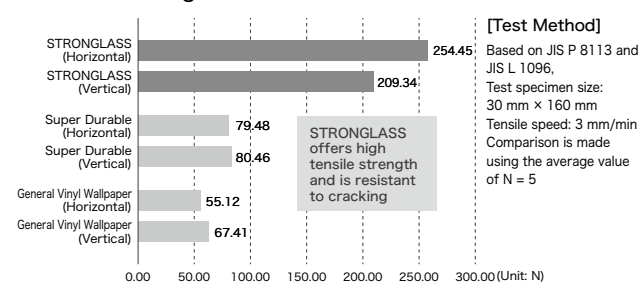
Impact Resistance Test

Height	300 mm	100 mm	
STRONGLASS	No change	No change	No change
Super Durable	Penetrated	Penetrated	Penetrated
General Vinyl Wallpaper	Penetrated	Penetrated	Penetrated

[Test Method]

Based on JIS K 5600, the comparison is performed using a DuPont-type impact tester with a 300 g falling weight and an indenter/anvil with a radius of 6.35 mm at drop heights of 300 mm and 100 mm.

Tensile Strength Test



[Test Method]

Based on JIS P 8113 and JIS L 1096, Test specimen size: 30 mm x 160 mm Tensile speed: 3 mm/min Comparison is made using the average value of N = 5

Concealment of Substrate Unevenness Test



The wallpaper is installed over a substrate with tape applied to simulate unevenness

STRONGLASS provides excellent concealment of substrate unevenness, minimizing its visibility.

*The functional properties and test results described on this page are based solely on Japanese national standards or our own internal specifications, testing methods, and criteria.

We have not conducted any testing based on the standards, testing methods, or criteria of other countries or regions where the product may be sold or used.

CONCRETE



ST-11



ST-13



ST-12



ST-14

made in Czech Republic

Width 98 cm

Note: 20 Please be sure to check p. 273.

LEATHER



ST-15

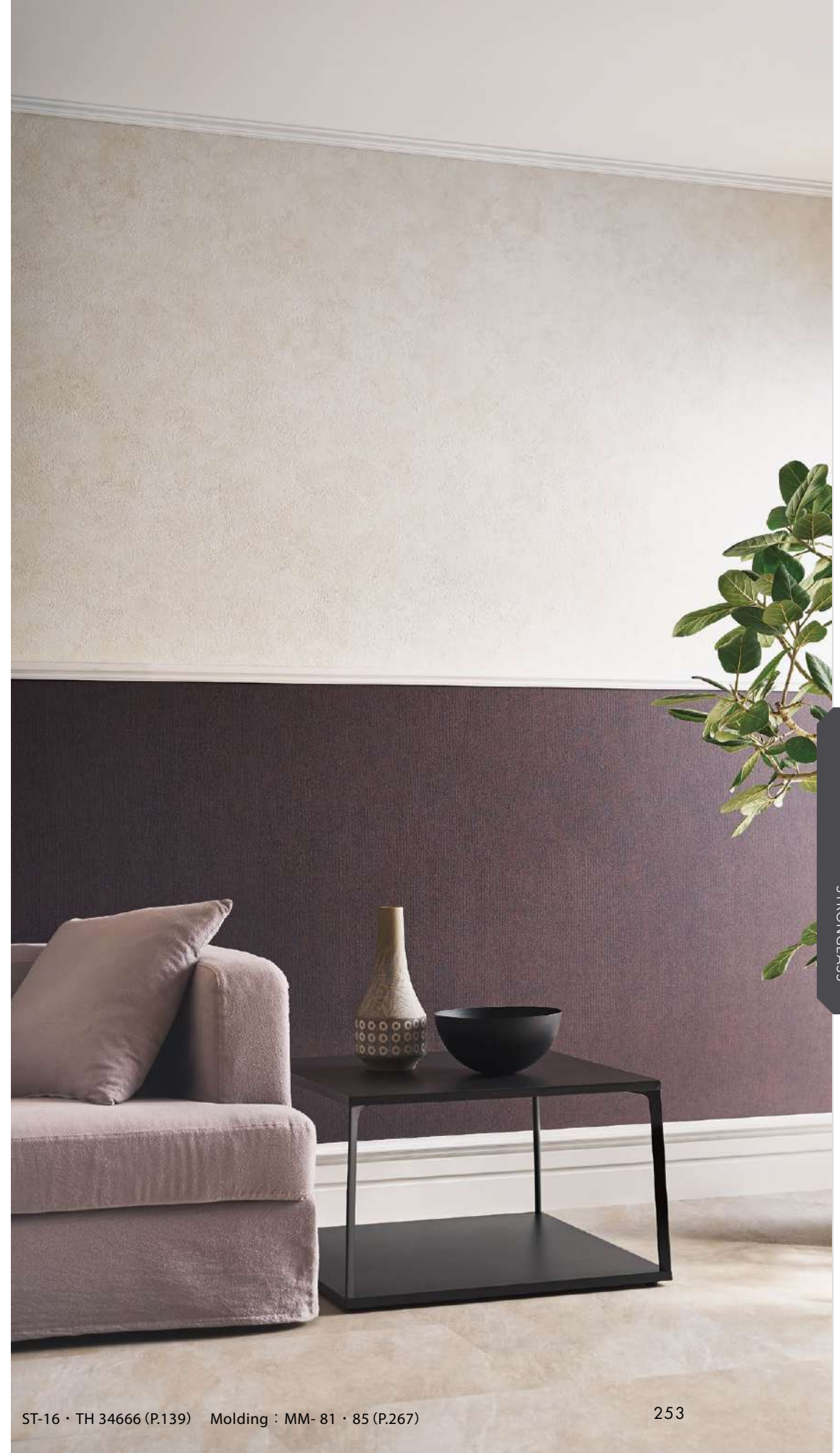


ST-16

made in Czech Republic

Width 98 cm

Note: 20 Please be sure to check p. 273.



How to Order

1. Base Wallpaper Selection

Please select from the SANWALL-HESS lineup.

2. Color Specification for SAN-Kalitt (Exclusive Paint)

Please specify the color of SAN-Kalitt (exclusive paint) from the "Light Color" color chart of a commercially available color sample book. Color mixing (tinting) generally requires approximately 1–2 weeks. Preparation of a painted sample board (A4 size) is also available. (Fee applied; estimated delivery time: 1–2 weeks)

*Dark colors are not available. Please scan the QR code below for available colors.

*Please specify either a matte finish (0% gloss) or a 30% gloss finish.

*SAN-Kalitt (exclusive paint) is available in 4 kg and 16 kg cans.

*For pricing and delivery information, please contact our sales representative.

3. Base Wallpaper Installation

When installing SANWALL-HESS, confirm both the substrate type and the adhesive type before installation.

Please use BENRIDAIN MIX Adhesive (BB-307) as the adhesive.

4. Painting

For installation, apply two coats using SAN-Kalitt (exclusive paint): one primer coat followed by one topcoat.

■ Compatible Paint Colors

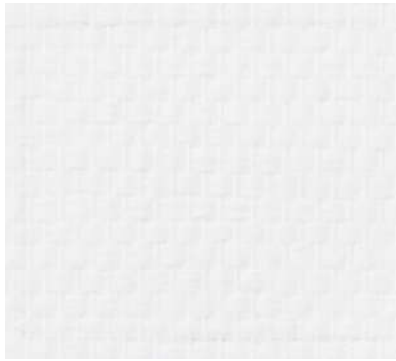
Please specify a light color.
Please scan the QR code
for available paint colors ▶



(Japanese)

Note: 28 Please be sure to check p. 274.



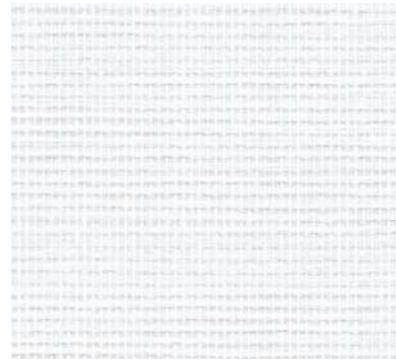


HS-21

made in Czech Republic

Width 100 cm

Note: 28 Please be sure to check p. 274.



10 cm

HS-21

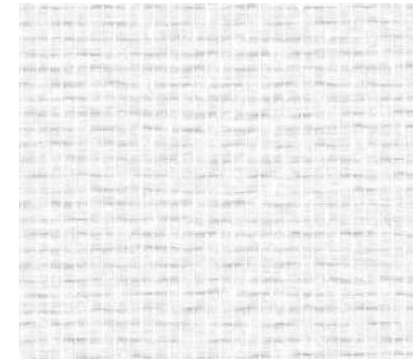


HS-24

made in Czech Republic

Width 100 cm \updownarrow 1.6 cm \leftrightarrow 6.7 cm

Note: 28 Please be sure to check p. 274.



10 cm

HS-24

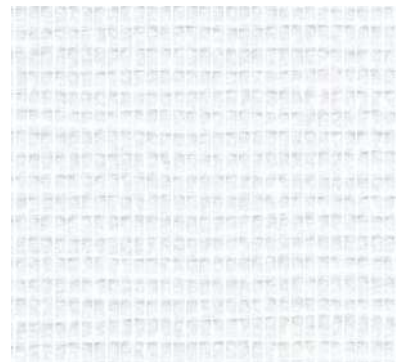


HS-22

made in Czech Republic

Width 100 cm

Note: 28 Please be sure to check p. 274.



10 cm

HS-22



HS-25

made in Czech Republic

Width 100 cm \updownarrow 1.6 cm \leftrightarrow 1.4 cm

Note: 28 Please be sure to check p. 274.



10 cm

HS-25

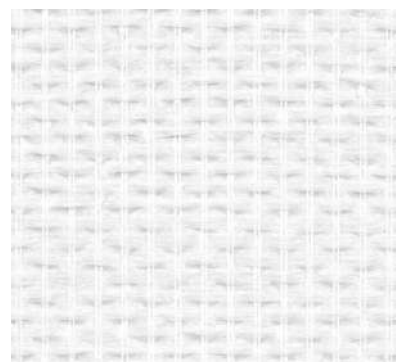


HS-23

made in Czech Republic

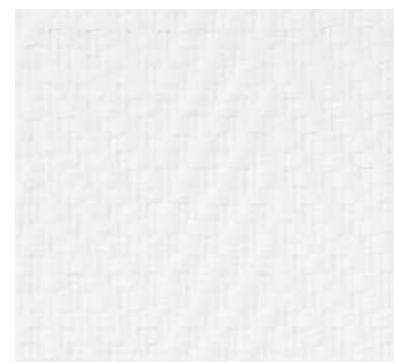
Width 100 cm

Note: 28 Please be sure to check p. 274.



10 cm

HS-23

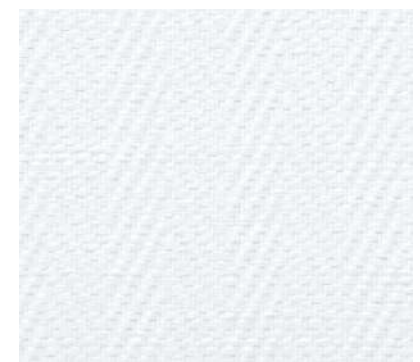


HS-26

made in Czech Republic

Width 100 cm \updownarrow 0.9 cm \leftrightarrow 3 cm

Note: 28 Please be sure to check p. 274.



10 cm

HS-26

Rauhfaser

Natural Material Paintable Wallpaper,
Developed in Environmentally Advanced Germany

1. Ecological Paintable Wallpaper

This wallpaper is designed for use as a base for paint and features distinctive textures: "Fleece," which offers excellent durability and a smooth, clean finish; and "Chips," which is made by embedding wood chips between layers of recycled paper. Because no chemical substances are used, they do not emit harmful materials such as VOCs.

2. Blue Angel Mark Certified (Chips Only)

The Blue Angel is an environmental labeling program promoted by the German Environment Agency. Similar to the Eco Mark, it is awarded to products that meet defined environmental criteria and have a reduced environmental impact.



PW-11 [Fleece]

made in Germany

Width 100 cm

Note: 29 Please be sure to check p. 274.



PW-12 [Chips]

made in Germany

Width 75 cm

Note: 29 Please be sure to check p. 274.



PW-13 [Chips]

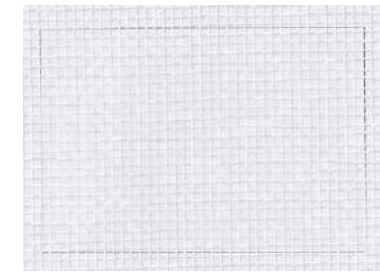
made in Germany

Width 75 cm

Note: 29 Please be sure to check p. 274.

Cheesecloth

Base material for painting and
putty application



PW-21 (without backing) NEW

PW-22 (with backing) NEW

Width 93 cm

Note: 29 Please be sure to check p. 274.





Textile Wallpaper for Art Galleries and Museums

Contributes to creating a suitable exhibition environment
in Art Galleries and Museums

Suppresses the Release of Ammonia and Acetic Acid

If ammonia or acetic acid is present in an indoor environment where cultural assets and artworks are displayed, it may cause deterioration, fading, or discoloration of the exhibits. The textile wallpaper designed for art galleries and museums helps maintain a suitable exhibition environment by minimizing the release of these substances.

■ Release Concentration Test Results of Each Substance

Measured Substances	Reference Concentration	Textile Wallpaper for Art Galleries and Museums
Ammonia	30 ppb or less	30 ppb or less
Acetic acid (as organic acid)	170 ppb or less	80 ppb or less
Formaldehyde	80 ppb or less	1.46 ppb
Acetaldehyde	30 ppb or less	N.D. (indicating below the quantification limit)

*The reference concentration represents a guideline value considered desirable for exhibition environments.

*Ammonia and acetic acid are measured using a passive indicator.

*Formaldehyde and acetaldehyde are measured in accordance with JIS A 1901 (Small Chamber Method).

*The above test results are measured values and are not guaranteed values.

*The functional properties and test results described on this page are based solely on Japanese national standards or our own internal specifications, testing methods, and criteria.

We have not conducted any testing based on the standards, testing methods, or criteria of other countries or regions where the product may be sold or used.



THB 1931

Sold by roll



THB 1932

Sold by roll

Textile Wallpaper

Width 92 cm x 30 m Roll

Note: 15 Please be sure to check p. 273.

This product is sold only by the roll (30 m). Please note that cut-length sales are not available.

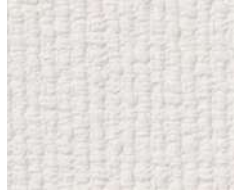
Presentation Wallpaper

SAN-Form Basic II

This basic bulletin board wallpaper is available in a rich selection of colors. It features an antibacterial function that helps suppress the growth of bacteria on the surface.



K 511-1/K 511-2



K 501-1/K 501-2



K 512-1/K 512-2



K 518-1/K 518-2



K 517-1/K 517-2



K 502-1/K 502-2



K 503-1/K 503-2



K 505-1/K 505-2



K 506-1/K 506-2



K 515-1/K 515-2

K 501~518-1 Width 92 cm × 40 m Random Length Roll, 0.85 mm Thickness

K 501~518-2 Width 122 cm × 30 m Random Length Roll, 0.85 mm Thickness

Anti-Mold | Anti-Bacterial

Note: 21 Please be sure to check p. 273.



K 518

SAN-Form Line II

This is a line-pattern type that makes it easy to post items straight. It features an antibacterial function that helps suppress the growth of bacteria on the surface.



K 601-1/K 601-2



K 602-1/K 602-2



K 603-1/K 603-2



K 613-1/K 613-2



K 614-1/K 614-2

K 601~614-1 Width 92 cm × 40 m Random Length Roll, 0.80 mm Thickness

K 601~614-2 Width 122 cm × 30 m Random Length Roll, 0.80 mm Thickness

Anti-Mold | Anti-Bacterial

Note: 21 Please be sure to check p. 273.



K 614



K 656

SAN-Form Basic J-II



K 551 (Same color as K 501)



K 552 (Same color as K 502)



K 553 (Same color as K 503)



K 554 (Same color as K 506)

Width 92 cm × 40 m Random Length Roll, 0.85 mm Thickness
Anti-Mold | Anti-Bacterial

Note: 21 Please be sure to check p. 273.



K 657

SAN-Form Cork II



This is a bulletin board wallpaper with a cork pattern. It is also recommended for use as an accent in residential settings.



K 656

Width 92 cm × 40 m Random Length Roll, 0.85 mm Thickness
Anti-Mold | Anti-Bacterial

Note: 21 Please be sure to check p. 273.

SAN-Form Green II



This is a bulletin board wallpaper with a lawn pattern. It is also recommended for use as an accent in residential settings.



K 657

Width 92 cm × 40 m Random Length Roll, 0.85 mm Thickness
Anti-Mold | Anti-Bacterial

Note: 21 Please be sure to check p. 273.

Whiteboard

NEW SAN-Whiteboard

This product allows for writing and erasing with whiteboard markers and supports posting with magnets. It is also compatible with projector projections.



K 351-1/K 351-2

K 351-1 Width 93 cm × 12 m Random Length Roll, 0.85 mm Thickness
 K 351-2 Width 121 cm × 9 m Random Length Roll, 0.85 mm Thickness
 Product Weight: 2.2 kg/m²

Anti-Rust

Note: 24 Please be sure to check p. 273.

■ Magnetic Strength Evaluation (Reference Values)

Paper Thickness: 64 g/m²

Magnet Type		A4 Size	A3 Size
Round Magnet (secured with two magnets)	KOKUYO MAC-40NB	3 sheets	2 sheets
Magnet Bar	KOKUYO MAC-T201NB 200L	5 sheets	3 sheets

*The above test results are measured values and are not guaranteed values.

*This document provides reference information on approximate magnetic strength. We do not recommend the specific magnets shown; we suggest using magnets with stronger magnetic force.

*The functional properties and test results described on this page are based solely on Japanese national standards or our own internal specifications, testing methods, and criteria.

We have not conducted any testing based on the standards, testing methods, or criteria of other countries or regions where the product may be sold or used.



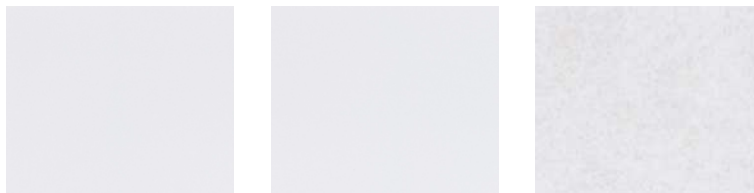
K 351

REATEC Whiteboard Sheet

This is a self-adhesive decorative film designed for writing and erasing with whiteboard markers.

When used in combination with a metal plate, it allows for posting with magnets.

In addition, TW-1000 specifically supports projector projections and can be folded for installation over seams.



TW-1000



TW-2000



TWP-2001



TW-1000 Width 122 cm
 TW-2000 Width 122 cm
 TWP-2001 Width 122 cm

Note: 25 Please be sure to check p. 274.

■ Function Comparison

	Writing and Erasing with Whiteboard Markers	Projector Projection	Folding Installation
TW-1000	○*	○	○
TW-2000	○	×	×
TWP-2001	○	×	×

*Writing and erasing are possible with the recommended markers and erasers



TWP-2001





K 304 (SAN-Magnet Base) • TH 34665 (Wallpaper P.138)

Magnet

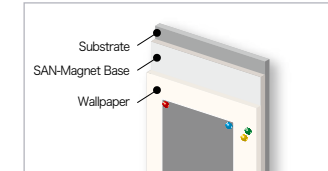
SAN-Magnet Base (Base Material)



This is a base material containing iron powder, used in combination with wallpaper.



<Usage Image>



K 304

Width 92 cm × 12 m Random Length Roll, 0.85 mm Thickness

Product Weight: 2.0 kg/m²

Anti-Rust

Note: 22 Please be sure to check p. 273.

■ Magnetic Strength Evaluation (Reference Values)

In the case of K304 (SAN-Magnet Base) + TH34665

Paper Thickness: 64 g/m²

Magnet Type		A4 Size	A3 Size
Round Magnet (secured with two magnets)	KOKUYO MAC-40NB	2 sheets	1 sheet
Magnet Bar	KOKUYO MAC-T201NB 200L	2 sheets	1 sheet

*The above test results are measured values and are not guaranteed values.

*This document provides reference information on approximate magnetic strength. We do not recommend the specific magnets shown; we suggest using magnets with stronger magnetic force.

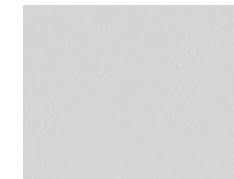
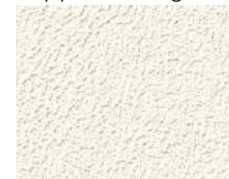
*The functional properties and test results described on this page are based solely on Japanese national standards or our own internal specifications, testing methods, and criteria.

We have not conducted any testing based on the standards, testing methods, or criteria of other countries or regions where the product may be sold or used.

SAN-Magnet



Containing iron powder, this bulletin board wallcovering supports magnetic posting.



K 302

K 303

K 308

Width 92 cm × 12 m Random Length Roll, 0.75 mm Thickness Product Weight: 2.0 kg/m²

Anti-Rust

Note: 23 Please be sure to check p. 273.

■ Magnetic Strength Evaluation (Reference Values)

Paper Thickness: 64 g/m²

Magnet Type		A4 Size	A3 Size
Round Magnet (secured with two magnets)	KOKUYO MAC-40NB	3 sheets	2 sheets
Magnet Bar	KOKUYO MAC-T201NB 200L	5 sheets	3 sheets

*The above test results are measured values and are not guaranteed values.

*This document provides reference information on approximate magnetic strength. We do not recommend the specific magnets shown; we suggest using magnets with stronger magnetic force.

*The functional properties and test results described on this page are based solely on Japanese national standards or our own internal specifications, testing methods, and criteria.

We have not conducted any testing based on the standards, testing methods, or criteria of other countries or regions where the product may be sold or used.



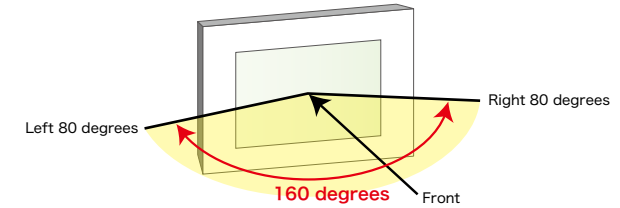
K 308

Suitable for posting with thumbtacks and pushpins Posting with magnets is possible

Wallpaper for Projectors

Projector images are displayed clearly

- Distortion of images and texts is minimal, offering excellent image reproducibility.
- Clear images can be viewed not only directly in front but also from an angle (Viewing angle: 160 degrees or more).
- Recommended for offices, conference rooms, rental spaces, educational facilities, and more.



■ Projector Projection Suitability

	Moiré	Light Source Reflection	Embossing Visibility
Wallpaper for Projectors	○	○	○
General Vinyl Wallpaper (Textile Texture)	×	○	△
General Vinyl Wallpaper (Matte Texture)	○	×	○

■ Brightness and Whiteness

*Measured using a spectrophotometer

	Brightness: L Value	Whiteness: W Value
TH 34397	91.99	90.53
TH 34398	92.67	90.09
TH 34399	90.27	90.72
TH 34577	92.10	92.23

- Higher brightness and whiteness values provide better color reproduction.
- You can select a color based on the viewing distance from the screen and the intended use.
- If the viewing distance is far, higher brightness and whiteness are effective.
- For viewing at a short distance, lower brightness and whiteness are eye-friendly, resulting in a more subdued image.

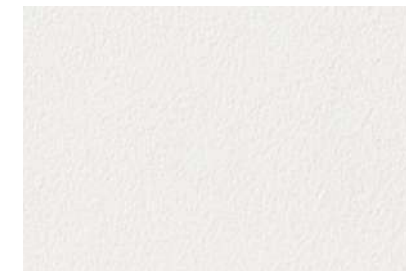
* The functional properties and test results described on this page are based solely on Japanese national standards or our own internal specifications, testing methods, and criteria. We have not conducted any testing based on the standards, testing methods, or criteria of other countries or regions where the product may be sold or used.



TH 34577 (P.114)

Super Durable

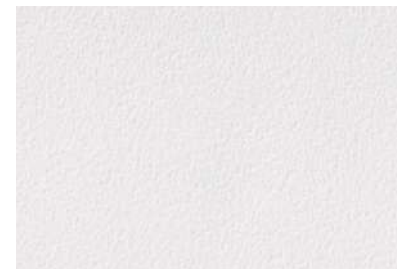
Notes: 05, 07 Please be sure to check p. 272.



TH 34397 (P.87)

Long-Term

Notes: 05, 06 Please be sure to check p. 272.



TH 34399 (P.87)

Notes: 05, 06 Please be sure to check p. 272.



TH 34398 (P.87)

Notes: 05, 06 Please be sure to check p. 272.

Dustproof Wallpaper

1. Dustproof

Helps create a hygienic and clean environment by suppressing the adhesion of dust caused by static electricity.

2. Anti-Static Property

Suppresses static charge by allowing electricity to dissipate.

■ Anti-Static Performance Test

	Test Method	General Vinyl Wallpaper	CR-11~CR-14	CR-15~CR-16
Surface Resistivity (Ω)	JIS K 6911	(1~9) × 10 ^{12~13}	(5~9) × 10 ⁸	(5~9) × 10 ⁶
Charge Half Decay Time (seconds)	JIS L 1094	—	0.5 seconds or less	0.3 seconds

*The above test results are measured values and are not guaranteed values.

*CR-17 to 18 are not anti-static types.

*The functional properties and test results described on this page are based solely on Japanese national standards or our own internal specifications, testing methods, and criteria.

Recommended Spaces	Semiconductor and LSI factories and laboratories	Assembly and inspection rooms for electronic devices and precision machinery
	*Assembly rooms for optical equipment and cameras and film manufacturing rooms	*Computer rooms and various equipment factories



Dustproof Tape

This is a joint protection tape exclusively for dustproof wallpaper. It has an anti-static performance of 10⁹Ω.

CR-11-TP ~ CR-18-TP

Specifications: Width 30 mm x 50 m Roll Material: Polyester Film

Note: 27 Please be sure to check p. 274.

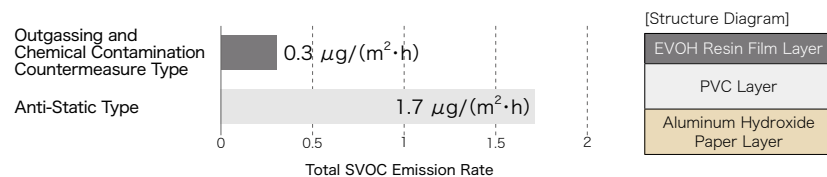
Outgassing and Chemical Contamination Countermeasure Type

It minimizes outgassing and suppresses chemical contamination from the wallpaper or substrate. Furthermore, due to the effect of EVAL film, it also excels in stain resistance and chemical resistance.



■ Outgassing Performance Evaluation

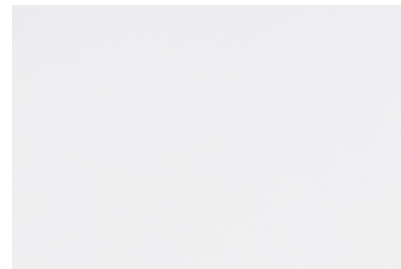
A lower value for the Total SVOC Emission Rate indicates less SVOC outgassing.



[Test Method] JIS A 1904 [Test Institution] MC Evolve Technologies Corporation

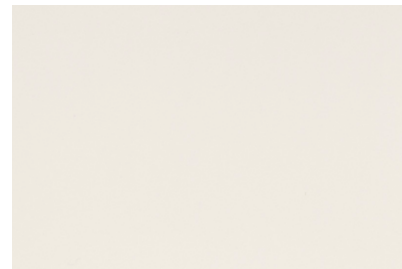
*The test specimen was prepared by installing the product onto the plasterboard (standard plate), including adhesives (such as starch or vinyl acetate paste) and substrate treatment agents (such as water-based sealers).

*The Total SVOC amount is the value obtained by collectively quantifying all components detected in the range of hexadecane to triacontane using a hexadecane conversion factor.



CR-17

Dustproof Tape CR-17-TP



CR-18

Dustproof Tape CR-18-TP

Width 92 cm

Anti-Mold | Anti-Bacterial | Stain Prevention

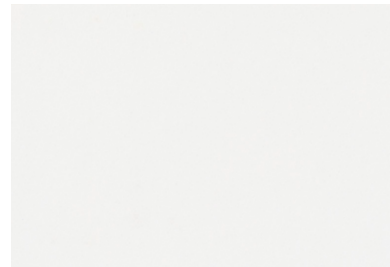
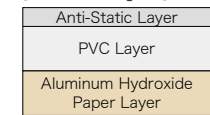
Notes: 06, 07, 26 Please be sure to check pp. 272 and 274.

Surface Resistance Value
10⁸Ω

Anti-Static Type

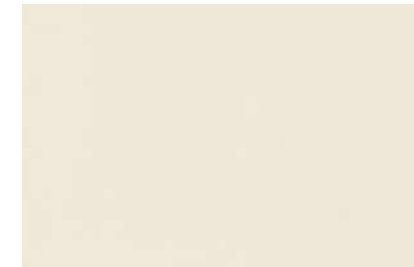
It maintains a high level of anti-static performance in the semiconductor range, with a surface resistivity of 10⁸Ω.

[Structure Diagram]



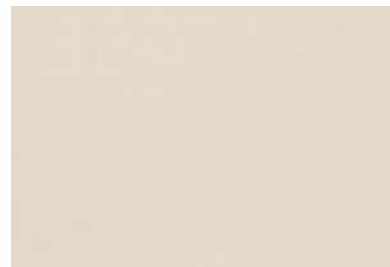
CR-11

Dustproof Tape CR-11-TP



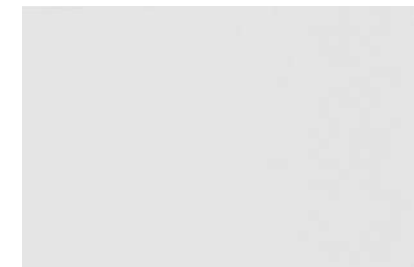
CR-13

Dustproof Tape CR-13-TP



CR-12

Dustproof Tape CR-12-TP



CR-14

Dustproof Tape CR-14-TP

Width 92 cm

Anti-Mold

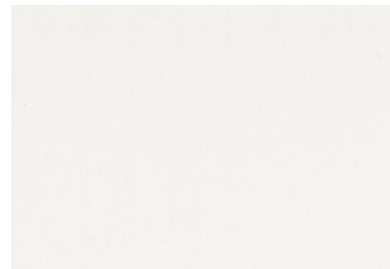
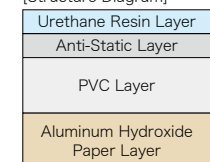
Notes: 06, 26 Please be sure to check pp. 272 and 274.

Surface Resistance Value
10⁶Ω

High-Performance Anti-Static Type

It maintains an even higher level of anti-static performance, with a surface resistivity of 10⁶Ω.

[Structure Diagram]



CR-15

Dustproof Tape CR-15-TP



CR-16

Dustproof Tape CR-16-TP

Width 92 cm

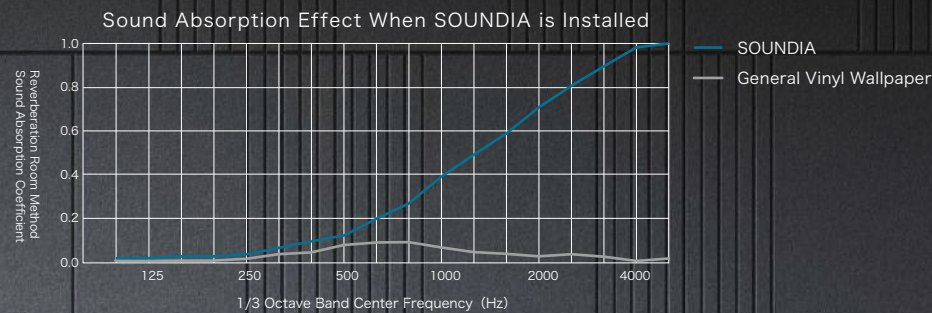
Anti-Mold

Notes: 06, 26 Please be sure to check pp. 272 and 274.

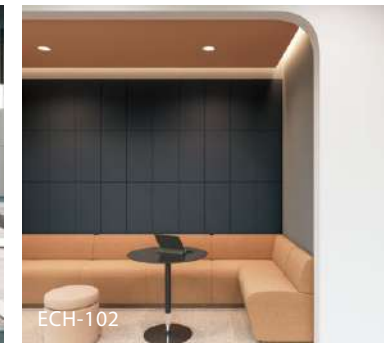
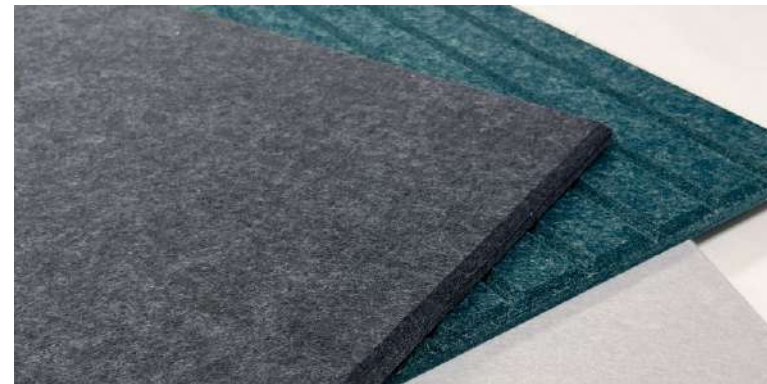
SOUNDIA

Creating Clear and Comfortable Indoor Acoustic Environments

SOUNDIA is a hard felt tile with sound-absorbing properties. It absorbs unwanted reverberations of voices and audio sounds, creating a more comfortable indoor acoustic environment. Its minimal and sophisticated design enhances the overall look of the space. It features an environmentally conscious design containing approximately 60% recycled PET material.



[Test Method] Based on JIS A 1409.
 *The test results in the figure above are measured values and are not guaranteed values.
 *The functional properties and test results described on this page are based solely on Japanese national standards or our own internal specifications, testing methods, and criteria. We have not conducted any testing based on the standards, testing methods, or criteria of other countries or regions where the product may be sold or used.



Sound Absorption

It suppresses sound reverberations to create a clear acoustic environment

Safety and Security

F☆☆☆☆ equivalent low-formaldehyde product

ECO

Contains approximately 60% recycled PET

Lightweight

Lightweight design of approximately 1,900 g/m²

Easy Installation

Can be installed using double-sided tape or insect pins
 Can be cut with a cutter

FLAT

Sold by sheet

made in China
 Dimensions: 30 x 60 cm
 Thickness: 9 mm
 Material: 100% Polyester Fiber

Note: 30 Please be sure to check p. 274.



ECH-101 NEW ECH-102 NEW ECH-103 NEW

STRIPE

Sold by sheet

made in China
 Dimensions: 30 x 60 cm
 Thickness: 9 mm
 Material: 100% Polyester Fiber

Note: 30 Please be sure to check p. 274.



ECH-201 NEW ECH-202 NEW ECH-203 NEW

*Since recycled materials are used, slight color differences may occur.
 *Can be installed using double-sided tape or insect pins.
 *For other notes, please be sure to check p. 274.
 *As shown in the figure below, the design features a 45° chamfer on all four sides.

Approx. 4 mm
 Approx. 5 mm Thickness: 9 mm

Accent Panel (Cushion Type) Order Made Product

Accent Panels are made of a polyurethane core covered with fabric. The three-dimensional nature of these panels will further enhance your interior design.

Product Features

- You can create panels that perfectly match your vision by freely choosing the fabric and size.
- Installation is easy since no adhesive is used. This is a hook-and-loop fastener installation method.
- Since the panels are lightweight, they are easy to remove during renovations.
- Because they have sound-absorbing properties, these panels are recommended for spaces like bedrooms and home theater rooms.



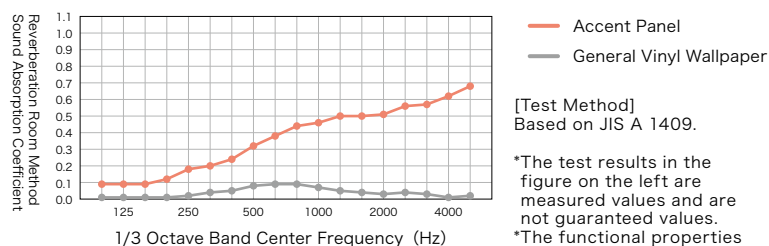
How to Order

- (1) Please select the fabric from our curtain and upholstery fabric selection.
- (2) Please specify the size.
*You can specify the size in 1 cm increments.

Production Size Range

Min. size: 30 cm × 30 cm
Max. size: 90 cm × 180 cm
Thickness: Approx. 2.6 cm

Acoustic Absorption Rate of Installed Accent Panel



*For details, please contact our sales representative.

[Test Method]
Based on JIS A 1409.

*The test results in the figure on the left are measured values and are not guaranteed values.
*The functional properties and test results described on this page are based solely on Japanese national standards or our own internal specifications, testing methods, and criteria.

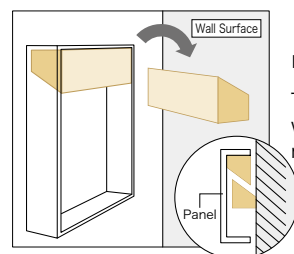
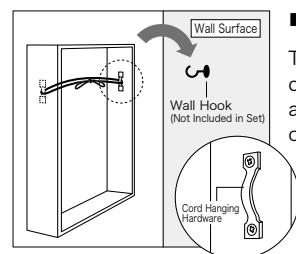


Panel Art (Wall-Hanging)

Panel Art lets you decorate your space with an artistic flair, using wallpaper or curtain fabrics. You can enjoy it as a room accent, much like displaying a piece of art.

Product Features

- You can freely select the fabric and size from our wallpaper, curtain, and upholstery selection.
- Installation is easy because specialized components are included in the set. We offer two types: cord-hung type and cleat-hung type.



How to Order

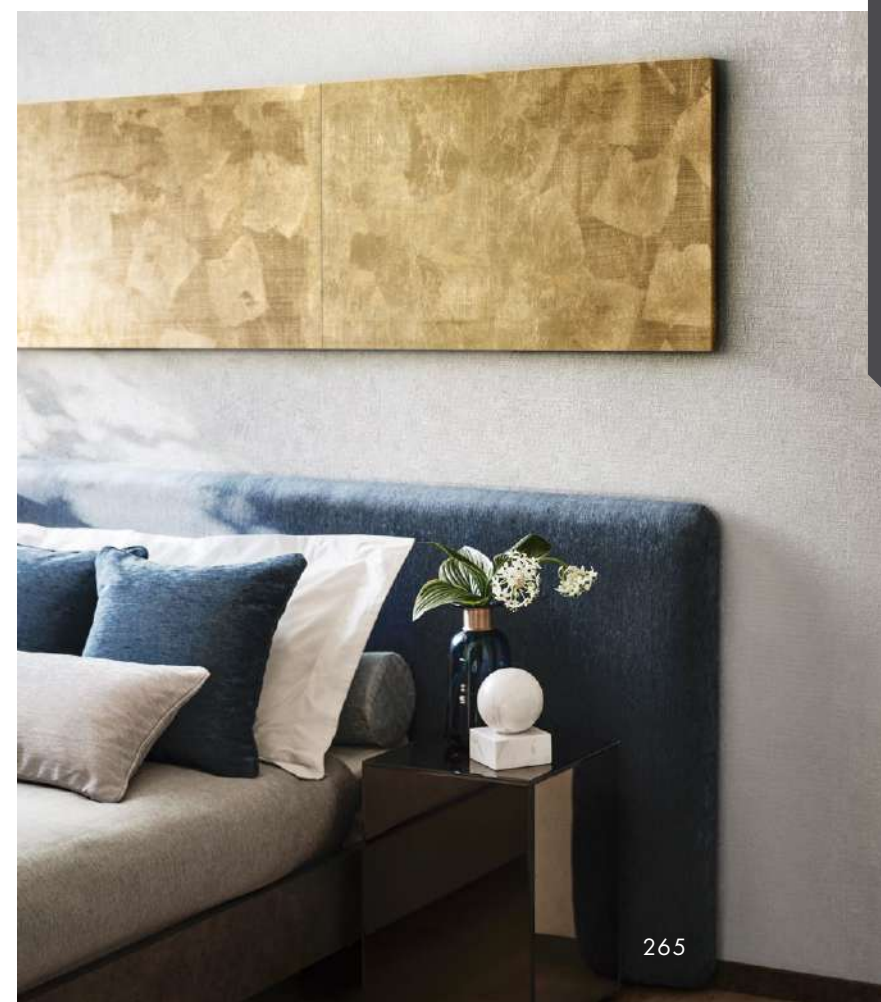
- (1) Please select the fabric from our wallpaper, curtain and upholstery fabric selection.
- (2) Please specify the size.
*You can specify the size in 1 cm increments.
- (3) Please select the installation type.

*For details, please contact our sales representative.

Production Size Range

Min. size: 30 cm × 30 cm Max. size: 90 cm × 180 cm
Thickness: Approx. 2.5 cm

*Please note that if one side of the panel exceeds 90 cm in length, the panel thickness will be approximately 3 cm.
*The base material is lauan plywood.



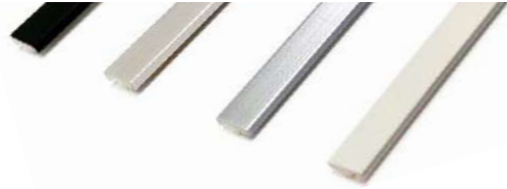
Smart Joiner (Trim)

Smart Joiner SLIM

For Flat Surfaces

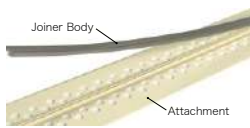
A trim for flat surfaces which beautifully finishes wallpaper joints

This is a slim and stylish 7 mm wide trim. It's a pre-installation type of trim for flat surfaces, designed to have its attachment piece installed on the substrate beforehand.



POINT 1

Install the joiner body by snapping it into the attachment that's already been installed on the substrate



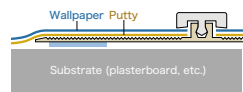
POINT 2

A simple shape that blends well with various interior spaces



Installation Image

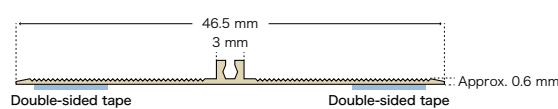
- (1) Attach the attachment to the substrate using both the included double-sided tape and adhesive
- (2) Smooth out the unevenness between the substrate and the attachment by applying putty
- (3) Apply wallpaper on the wall
- (4) Attach the joiner body



Joiner Body (H 2,500 mm × W 7 mm)



Attachment (H 2,500 mm × W 46.5 mm)



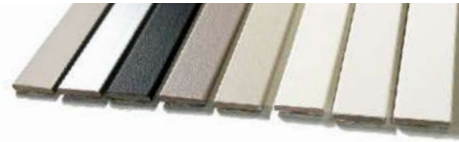
The joiner body and attachments are sold separately. Please order two types of parts: the joiner body (SRJ-211 to SRJ-253) and the attachment (SRJ-AT1) for installation.

Smart Joiner EASY

For Flat Surfaces

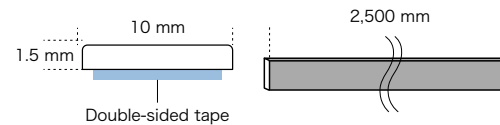
A retrofit trim for flat surfaces, featuring a simple design and easy installation

This is a 10 mm wide trim for flat surfaces that can be easily installed over the existing wallpaper.



POINT

You can easily install it over the existing wallpaper using the included double-sided tape in combination with instant adhesive (BB-546).



Smart Joiner CORNER

For Corners

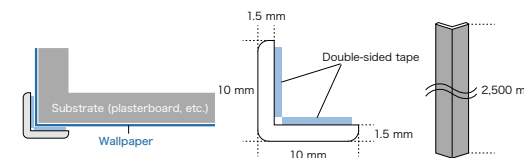
Perfect for reinforcing corners and pattern separation

This is a retrofit corner trim designed to reinforce corners and allow for distinct wallpaper separation at external corners.



POINT

You can easily install it over the existing wallpaper using the included double-sided tape in combination with instant adhesive (BB-546).



Specifications H 2,500 mm × W 10 mm (90°)

Smart Joiner Body List

Color and Material	Solid Color Material: ABS resin laminated with olefin sheet						Metallic Material: ABS resin laminated with PVC sheet		
	White	Off-White	Ivory	Light Greige	Warm Gray	Black	Silver	Champagne Gold	Gold
Smart Joiner SLIM (Attachments are sold separately)	SRJ-211	SRJ-212	SRJ-213	SRJ-214	SRJ-215	SRJ-216	SRJ-251	SRJ-252	SRJ-253
Smart Joiner EASY	EGJ-411	EGJ-412	EGJ-413	EGJ-414	EGJ-415	EGJ-416	EGJ-451	EGJ-452	EGJ-453
Smart Joiner CORNER	SCN-11	SCN-12	SCN-13	SCN-14	SCN-15	SCN-16	SCN-51	SCN-52	SCN-53

Smart Joiner SLIM Attachment

Item No. : SRJ-AT1



Molding (Decorative Trim)

These moldings can be used for ceiling cornices, wainscoting trims, or picture frames to add an elegant touch to your interior.

Product Features

■Enhanced Grade

With its sophisticated design, it creates a luxurious space that is a cut above the rest. It can be used broadly, from traditional European interiors to modern styles.

■Quick Installation

It offers excellent dimensional stability and good workability, which helps to improve work efficiency.

[Frame]



This trim can be widely used as a divider for separating wall finishes on upper and lower wall sections, and also as framing or accent decoration for wall mounted items like artwork.

◀MM90 (Frame)

[Ceiling Trim]



Used at the junction between the ceiling and wall, this molding elevates the overall look of the interior.

◀MM 80 (Ceiling Trim)

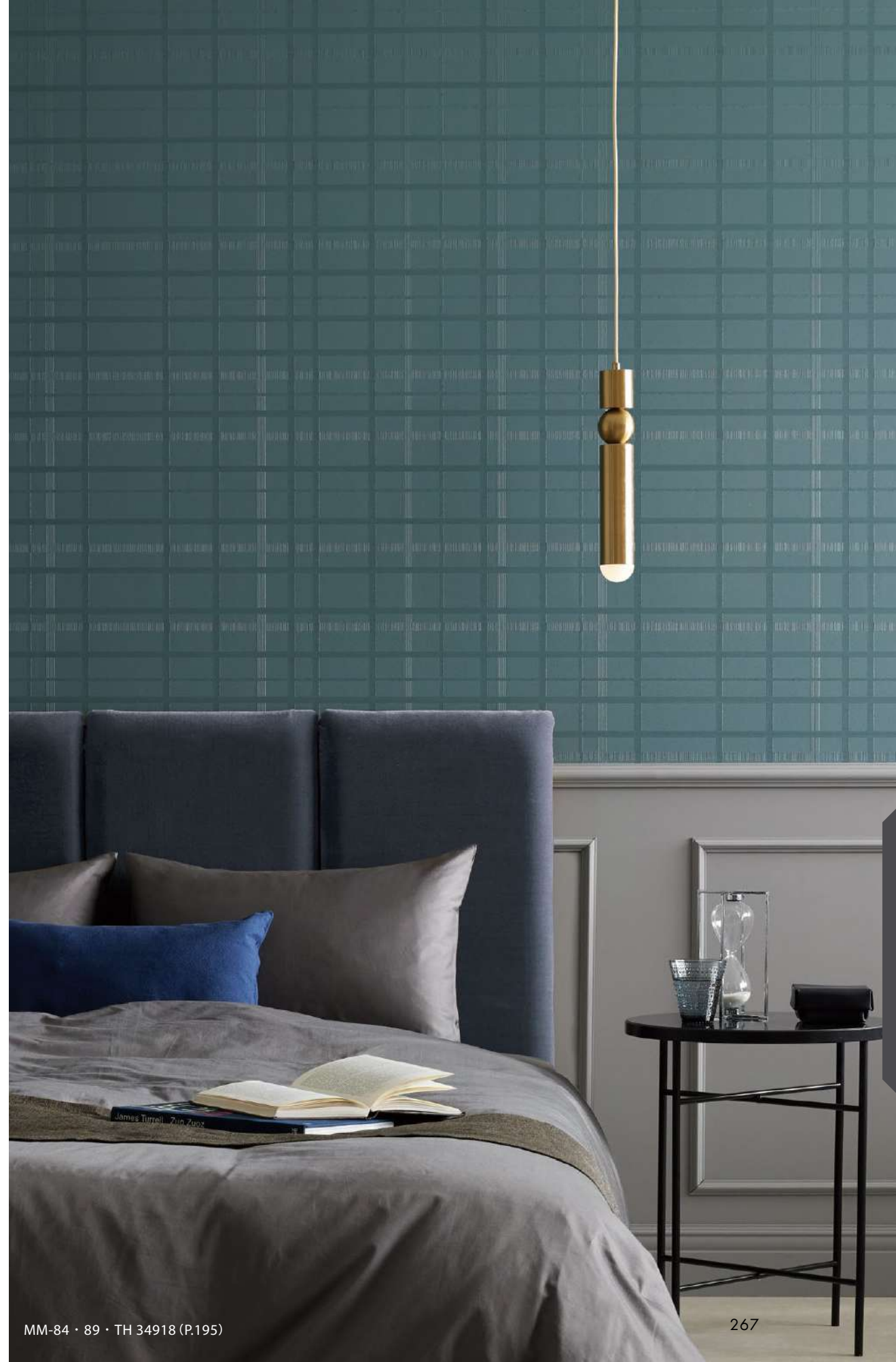
*Thickness, size, and color may vary slightly. Please make any necessary adjustments on-site during installation.

*The validity period of molding may differ from that of the sample book. Specifications and prices are subject to change during the sample book's validity period.



Please check our website for the product lineup.

(Japanese)



Trim